



THE RIVUS

GATED DESIGN VILLAS BY

ELIE SAAB

ASIA'S FIRST RIVERFRONT VILLAS
inspired by
HAUTE COUTURE

THE RIVUS
GATED DESIGN VILLAS BY
ELIE SAAB

The mark "THE RIVUS", GATED DESIGN VILLAS BY ELIE SAAB, the ELIE SAAB and ELIE SAAB Home Collection are used Solely by Masterise Homes under a license from "DL Licensing Limited and its affiliates."

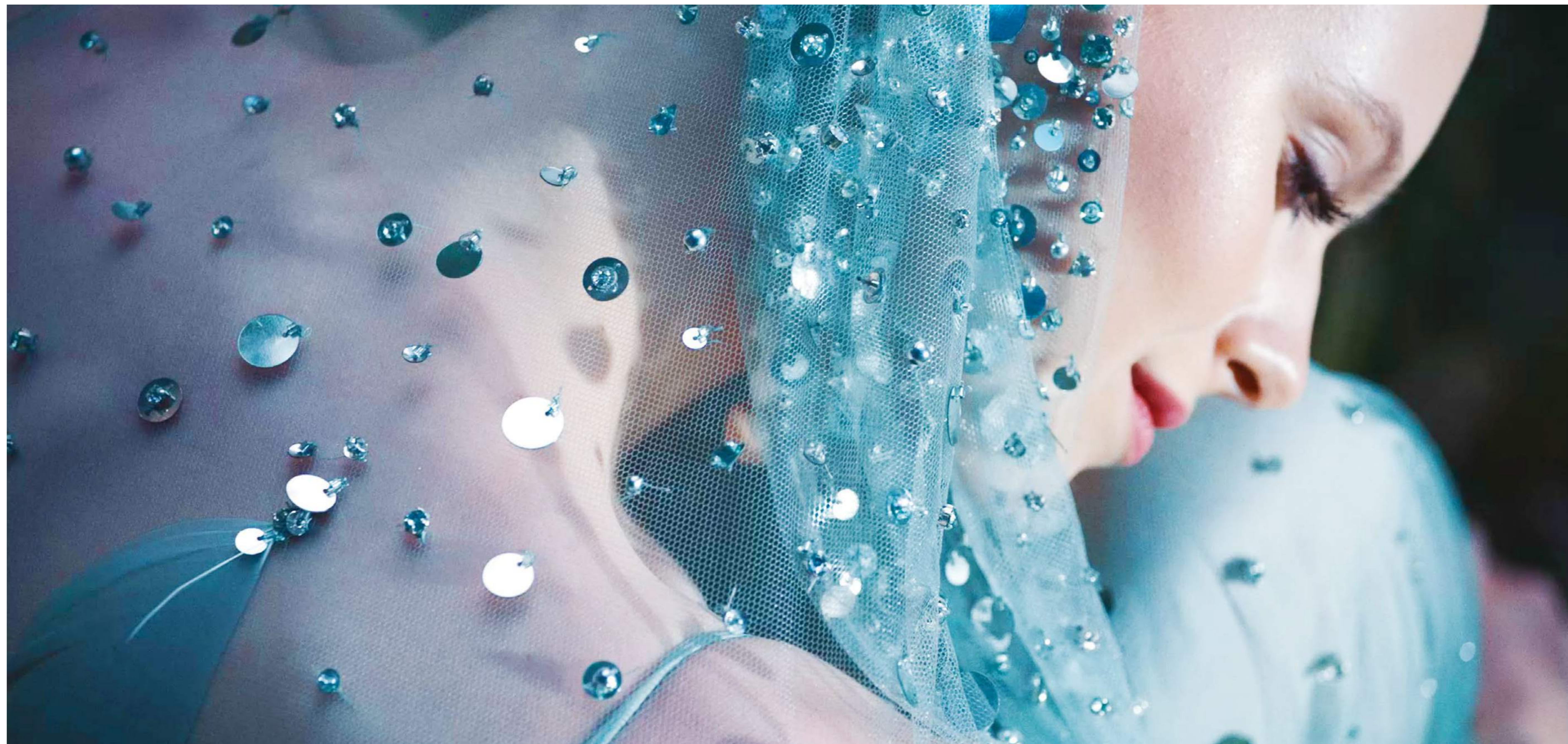


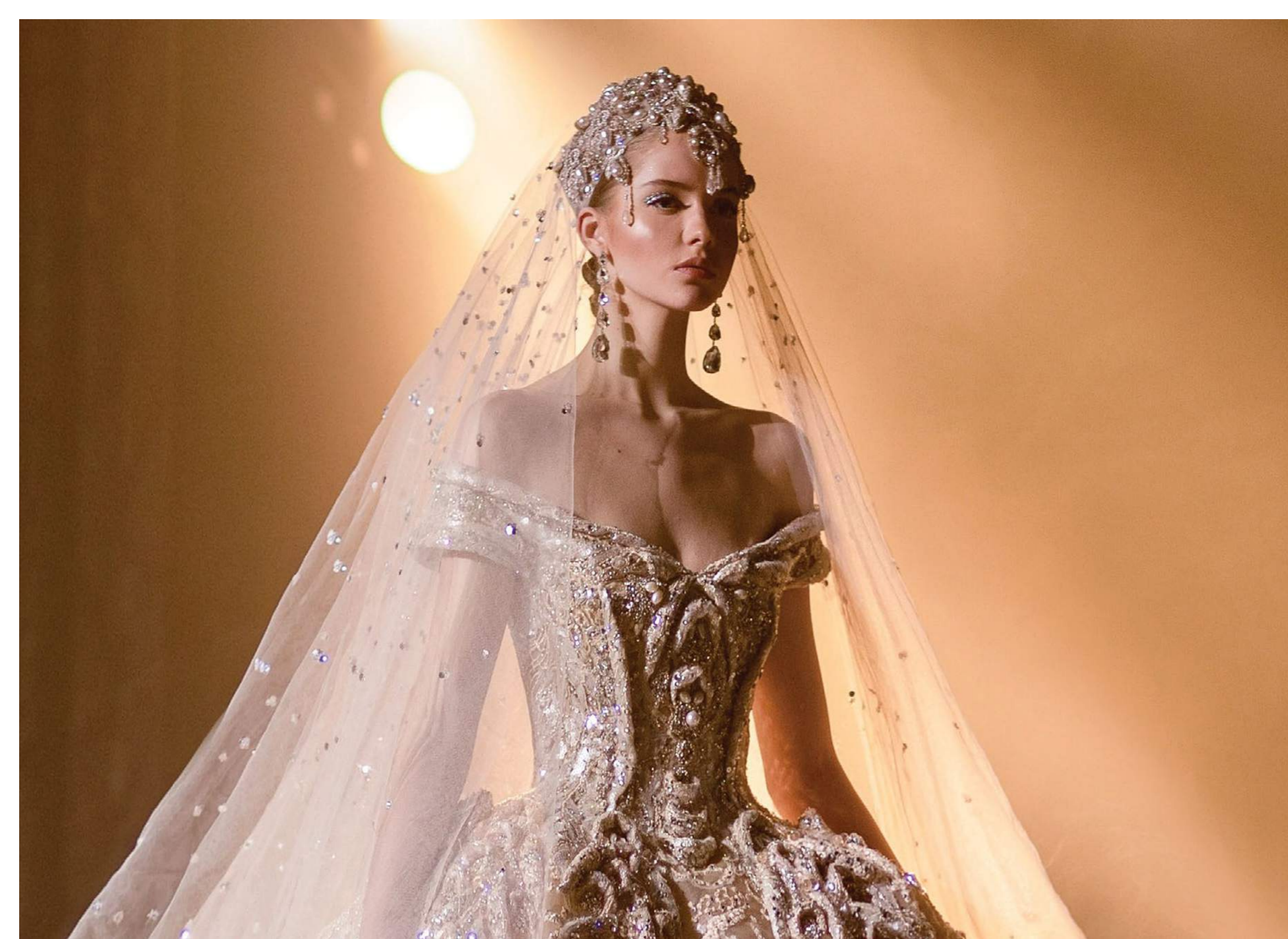
A PRISTINE
EXPERIENCE



THE ARTISTIC VISION *of* THE MASTER *of* HAUTE COUTURE

The RIVUS, a bespoke collection of luxury villas, is the legacy of a collaboration between internationally revered designer ELIE SAAB and reputed developer Masterise Homes. The project introduces a new era of Branded Residences in Vietnam, where Haute Couture meets villa living.



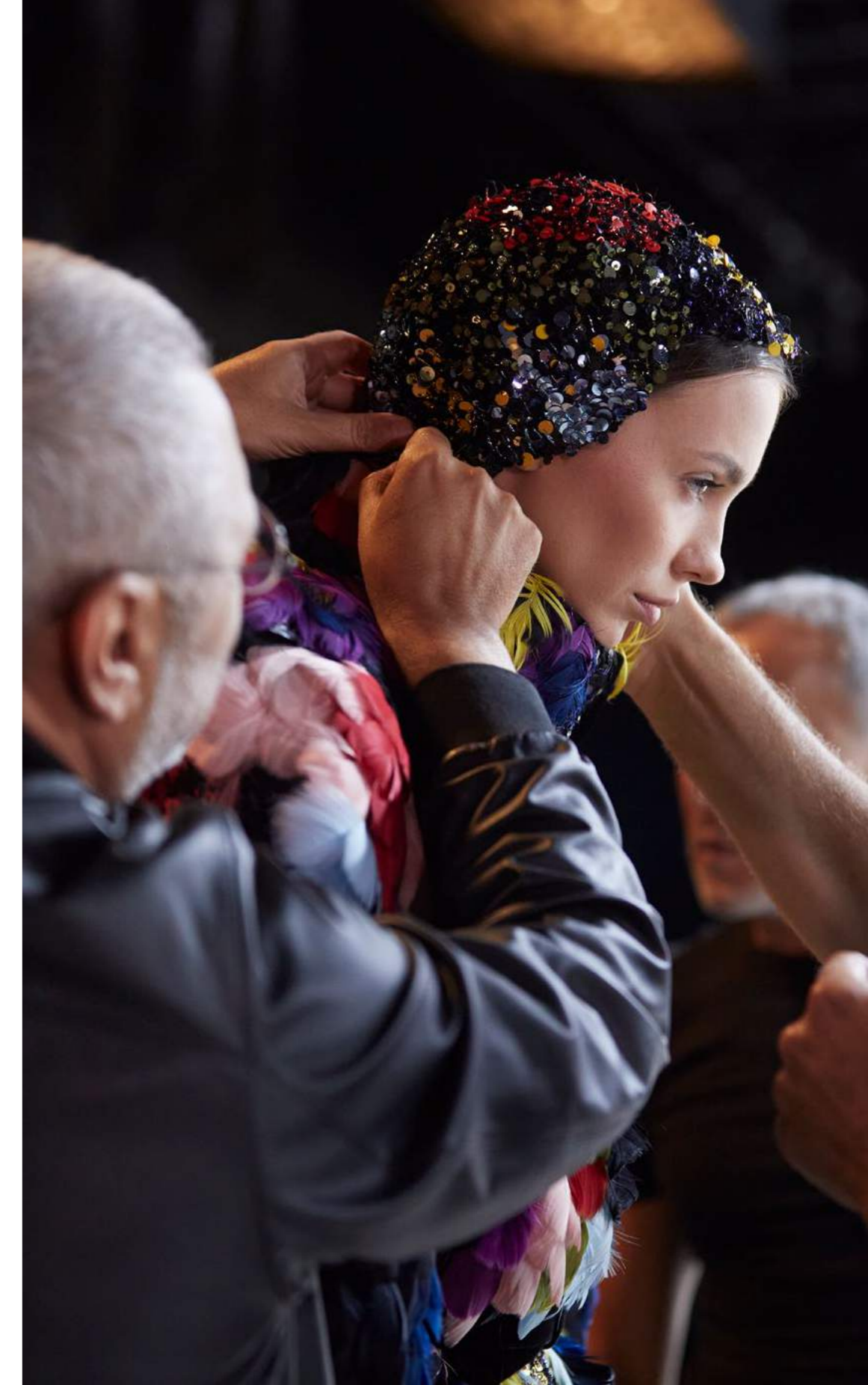


THE EPITOME *of* STYLE

In and out of the spotlight, Haute Couture thrives in its elusiveness. It embodies a coterie of culture, well-reputed but reserved only for the impeccable taste of an audience of eminent status.

Haute Couture is not only the union of luxury, quality, and style; it is an attitude, a way of life, fully tailored to the world elite.

Bask in a life of haute luxury.





ELIE SAAB INTERNATIONALLY RENOWNED DESIGNER

Among acclaimed European fashion brands at the Federation of Haute Couture and Fashion, ELIE SAAB was the first Middle Eastern designer to join as a pre-eminent official member of masterful expertise.

Each ELIE SAAB garment is a refined piece of art created to glorify the beauty of its bearer. ELIE SAAB creations are the marriage of art and fashion, drawn from the collective knowledge and passion of centuries of craftsmanship.





BEAUTY *in* ALL ITS FORMS

Over the years, ELIE SAAB has pursued international expansion and diversification by launching new additions to the brand's offering, such as perfume, ready-to-wear Bridal collection, eyewear, kids' wear, shoes, wallpaper, watches, and accessories.

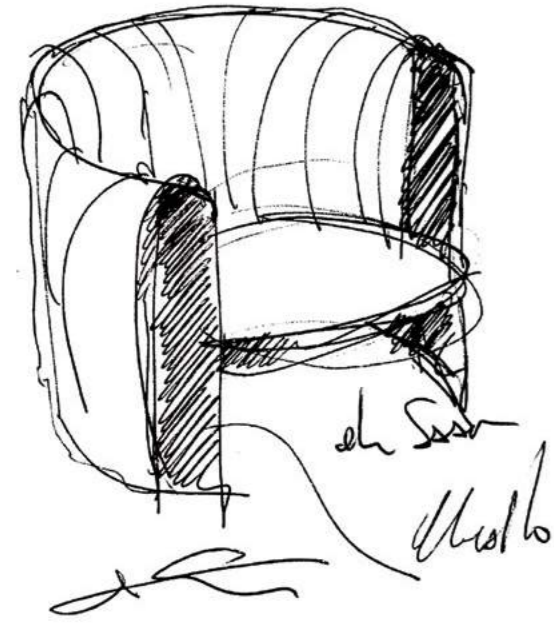
In 2020, ELIE SAAB partnered with the Italian-based company Corporate Brand Maison to expand into luxury furniture for home and hospitality projects.

Inspired by the soothing essence of Haute Couture to create an appealing living space, the ELIE SAAB furniture collection displays an aesthetic of elegance and glamorous flair, paired with the sumptuous detailing for which the brand is renowned. Entirely manufactured in Italy, the collection embraces the brand's Haute Couture approach to create a unique work of art.

ELIE SAAB FURNITURE COLLECTION

ELIE SAAB's sumptuous collection of furniture, lighting, and carpets elevates every aspect in every corner of your home, from the living room to the bedroom, from seating to lighting and all the details in between. It creates a unique experience, displaying the innate elegance and luxury of ELIE SAAB.





BRINGING HAUTE COUTURE *to* VILLA LIVING

For the very first time in Asia, ELIE SAAB, together with Masterise Homes, collaborated to launch a collection of exquisite villas by the river, creating a world defined by timeless elegance and beauty.

A designer's vision extended to the villas' expertly crafted interiors. ELIE SAAB brings his illustrious sense of glamour, sophistication, and unrivalled craftsmanship to these luxury villas by the river. The luxurious fabrics, distinctive style, and meticulous attention to detail give the villas' interiors a unique and modern edge, generating a sense of refined luxury enhanced by a palette of softly dramatic tones. Breathing new life into the prestigious world of villa living, the unique partnership between ELIE SAAB and Masterise Homes brings custom-made, high fashion comfort to the luxury homes of THE RIVUS, establishing the first-ever signature villas in Asia.



IMMERSE *in* PURE RIVERFRONT
EXTRAVAGANCE



THE RIVER RUNS HIGH.
THE GENTRIES' ABODE *on*
TRANQUIL TIDES



Artist's Impression

THE RIVUS is a refined and harmonised artwork, with a limited 121 one-of-a-kind villas that echo the spirit and glamour of high fashion.



Artist's Impression

The CITY HIDEAWAY, a SECRET WELL KEPT

A mere 25-minute drive away from Ho Chi Minh City, THE RIVUS is an enclave of peace and harmony, tuned to the rhythm of modern life and built close to the heart of the country. Nestled amid the shrouds of lush woodlands on the coast of the Dong Nai River, the wondrous resort-style residence project remains distant in spirit yet physically close to the action in the Central Business District of the capital and the international airport. Assume a new standard of villa living that lives up to the status of its owners.





Artist's Impression

VILLA LIFESTYLE FASHIONED *over* COPIOUS WATERS

THE RIVUS villas, naturally blessed with good feng-shui, rest on an exclusive bank of the Dong Nai River's. The gated, opulent compound enjoys ample private and communal spaces and an incomparable view of the monumental river. Inside and out, palatial designs of man and nature are readily present for the body and mind to appreciate. Each villa is a distinctive masterpiece, infused with ELIE SAAB's blend of glamour, sophistication, uniqueness, and craftsmanship, and meticulously designed as a unique masterpiece for its owner.





RESERVED for THE ART AFICIONADO

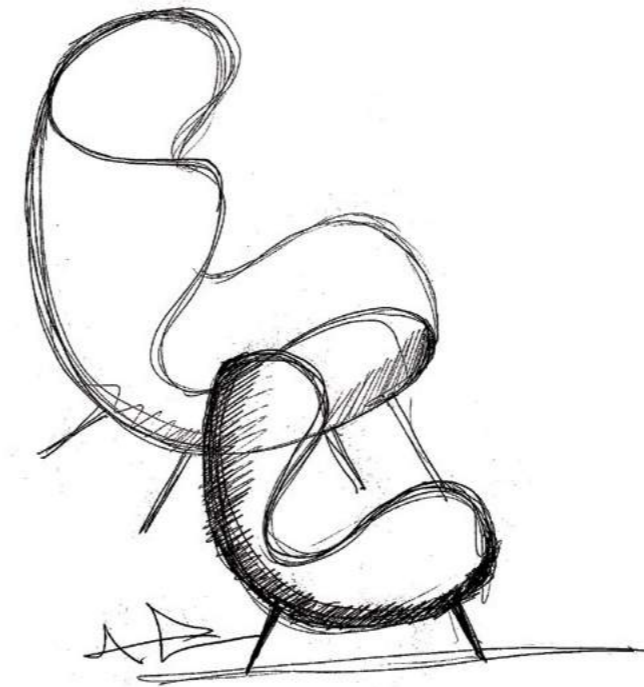


Artist's Impression

*FABRICS of LIFE
ASCENDED*



*SYNTHESISING
VOGUE and
FUNCTION*



Artist's Impression



Artist's Impression



TAILORED DESIGN WITH A TOUCH *of* HAUTE COUTURE

A sophisticated blend of solid grained wood and carved stones forms the facade of the luxury villas at the RIVUS, each asserting a stately yet restrained presence on the Dong Nai riverside. The villas' splendid glass walls allow the thriving natural scenery to shine through, amplifying the lavishness of ELIE SAAB designed interiors. Each villa is a priceless and rare art piece bearing ELIE SAAB's unmistakable signature - a masterpiece reflecting the style of the discerning few who call it home.

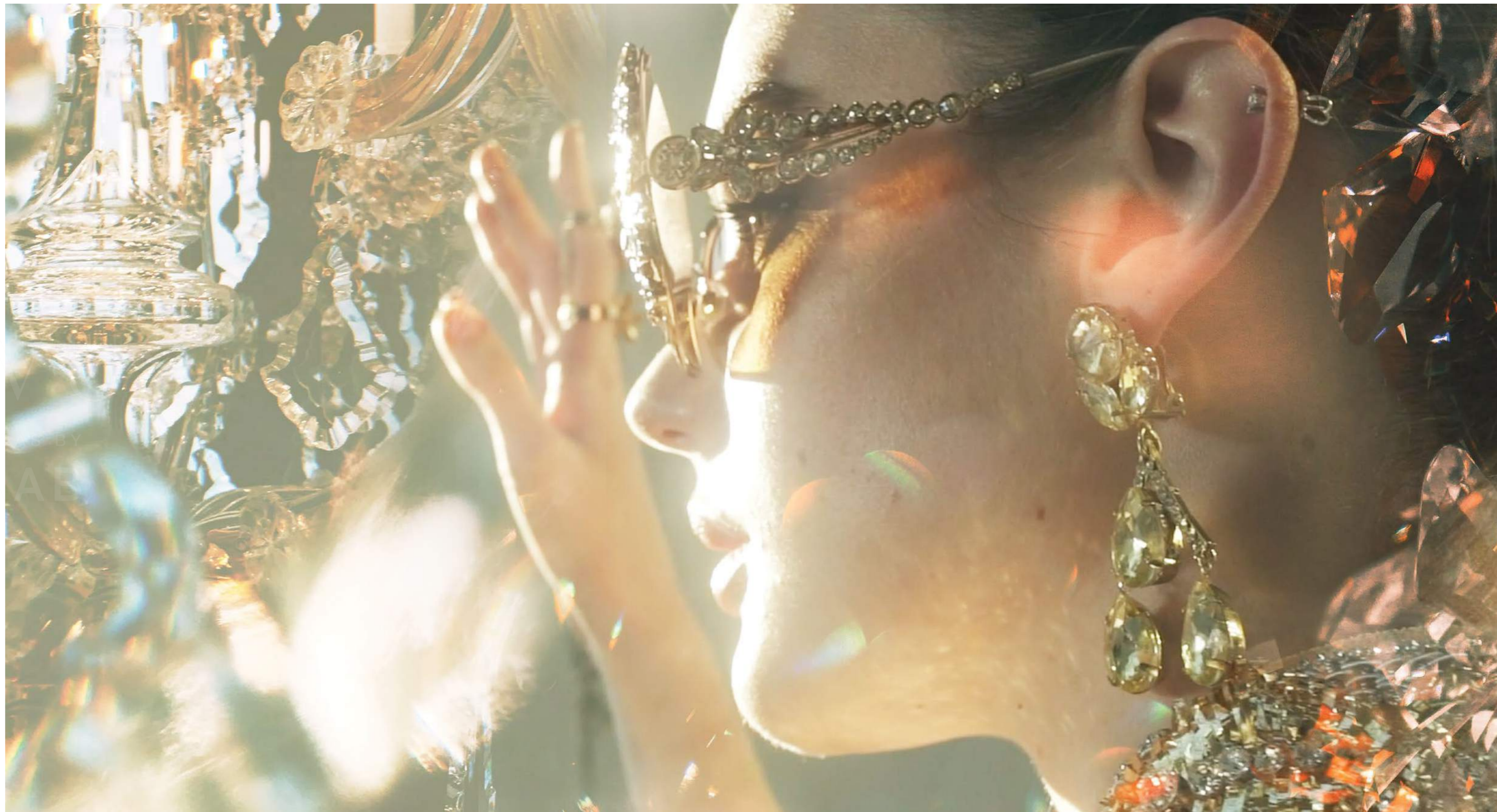


THE RIVUS LIFE *in* ALL ITS
GLAMOUR

IMMERSE *in* THE RESONANCE
of ART ON THE RIVUS



Artist's Impression



ELEVATING *the* LUXURIOUS VILLA LIVING EXPERIENCE



Witness the capaciousness of THE RIVUS, the meticulously designed villas, and the state-of-the-art clubhouse and its luxurious facilities.



Artist's Impression



The Sava COLLECTION

*Named after the beautiful Sava River in the West of the Balkan peninsula in Europe, ingenious craftsmanship elevates
The Sava from a riverside mansion to a flowing masterpiece.*

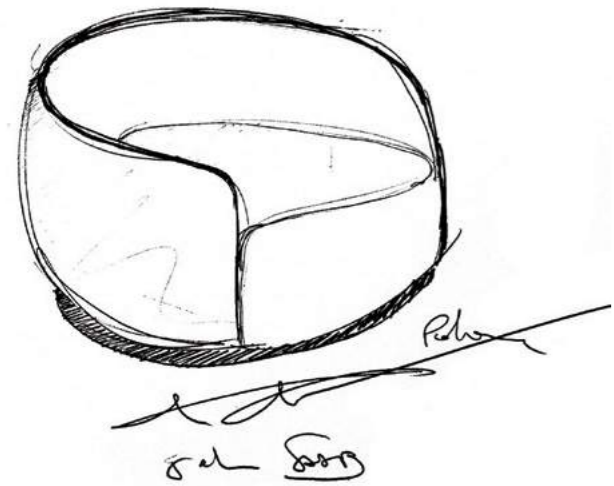
*With a prime location close to the project's entrance and reinforced by an elegant stone-clad façade of impressive scale and height,
the villas of The Sava Collection impress at first sight, teasing about the overwhelming grandeur that awaits inside.*

FOUR-
BEDROOM
MANSION

INFINITY VIEW
BEYOND THE PARK &
TOWARDS THE RIVER

TWO
LIVING ROOMS

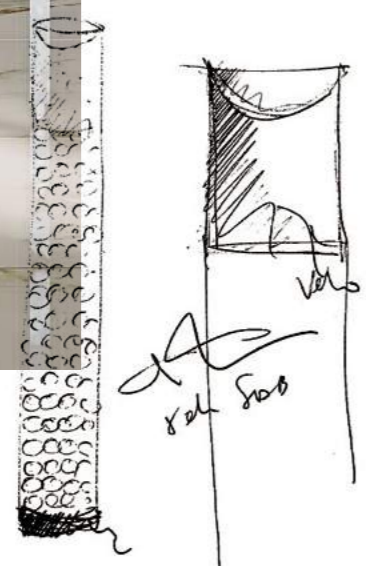




Two artistically embroidered living rooms, three bedrooms with walk-in wardrobes and windowed ensuite bathrooms, and a complete waterfront-facing master bedroom suite make up the quintessential experience of The Sava.



Each villa is gracefully presented like a made-to-measure masterpiece,
from the richness of materials to the attention to detail.
The Sava fully embodies the luxurious and timeless riverside
lifestyle envisioned by ELIE SAAB.



Artist's Impression



Artist's Impression



The Seine COLLECTION

The name Seine draws from the famous French river. Since ancient times, the Seine River has been a traffic lifeline, supplying most water inland. It is considered a symbol of prosperity and fertile development. Like the Seine River, the villas in The Seine Collection hug the coast of the marina, connecting owners with every part of the project while providing impeccable views.

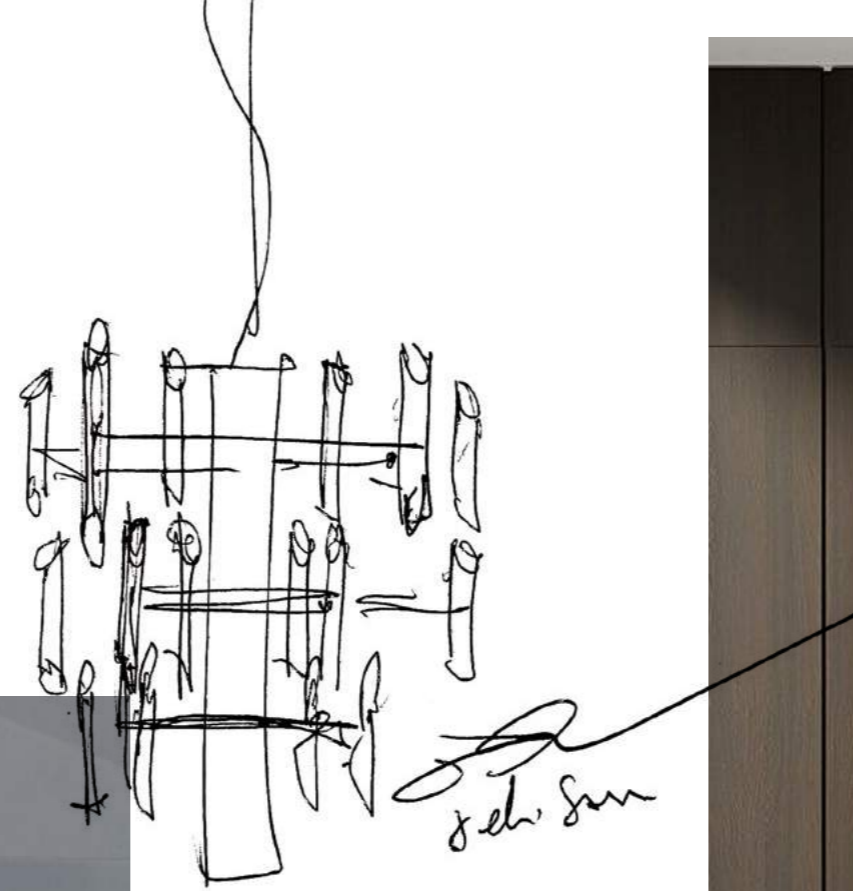
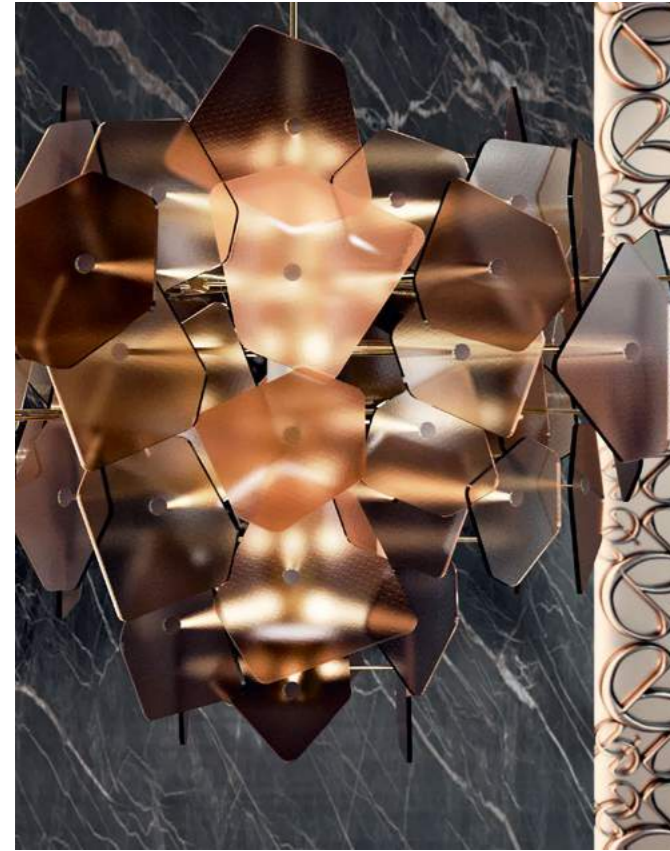
FIVE -BEDROOM
MANSION

DINING ROOM
FACING
GARDEN GALLERY

DIRECT VIEW
TO MARINA BAY



Behind the first glance of luxury lie features and flairs iconic to ELIE SAAB's design, embellishing The Seine with originality and artistry unseen anywhere else. Every approach to the mansion is a moment of realised importance, created by substantial stone claddings and bronze framings on the façade, windows and front door.





Artist's Impression

The three-storey spiral staircase with its accompanying curtain wall of equal height buttresses the 5-bedroom mansion, connects the living spaces, and allows natural lights to play an integral part in the villa's feel. Past the banquet dining room lies the Garden Gallery, set an arm's reach away from the great Dong Nai River. Atop the waters, all bedrooms come with ensuite bathrooms, while the master bedroom boasts extra private space to showcase the proportions and design finesse unique to The Seine Collection.



Artist's Impression



The Danube COLLECTION

The Danube gets its name from the longest river in the European Union and the second-longest in Europe. Known as the “river of kings”, the Danube houses numerous UNESCO World Heritage sites along its shores. Respecting the history of this legendary river, The Danube Collection honours its owners as kings and queens of unique status.

SIX-BEDROOM
MANSION

THREE-FLOOR
SPIRAL STAIRCASE

ALMOST PANORAMIC
VIEW OF THE RIVER





SPLENDOUR in EVERY CORNER

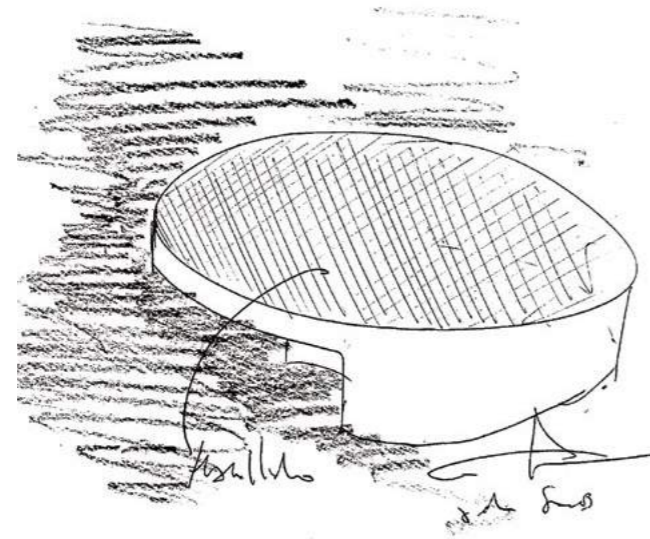
With a sweeping view of the Dong Nai River, The Danube stands on the crest of grandeur. The majestic elegance of the mansion catches the eye with its foundation of massive stone claddings, curved and glazed corners, and royally golden frames shape the contour of magnificence, immediately discernable as The Danube. The entrance, taking on the textures and colours of ELIE SAAB designs, details the designer's prominence with a timeless form.





Artist's Impression

The Danube is made ultra-accessible by a passenger lift and a spiral staircase that travels from the third level to the basement and connects the bespoke living spaces in between. Moving along the corridors and sidewalks, one can find the capacious living areas and dining spaces as well as a private garden, meticulously landscaped and recessed into the side façade. As expected from a villa of this class, all bedrooms come with ensuite bathrooms. The master bedroom receives one of the most delicate touches in the entire project, claiming a generous private living space with a separated walk-in closet and a balcony with an almost panoramic view of the river. All create an aesthetic work of art for the elite owners.



Artist's Impression

FACILITIES

1. Main entrance
2. Secondary entrance
3. River observation deck
4. Boardwalk promenade
5. Marina bay
6. Marina bridge
7. Riverpark entrance
8. Riverside exercise court
9. Sun lawn
10. Central courtyard
11. Leisure Garden
12. Pet garden and seating court
13. Kids playground
14. Timber terrace
15. Terraced Amphitheatre
16. Water feature
17. Fitness station
18. Playground
19. Clubhouse
20. BBQ area
21. Garden cinema
22. Recreation pool
23. Kid's pool
24. Marina front park



THE RIVUS
GATED DESIGN VILLAS BY
ELIE SAAB

Disclaimer: Whilst every care has been taken to ensure accuracy in the preparation of the information contained herein, no warranties whatsoever are given or legal representation provided in respect thereon. The developer reserves the right to modify information of the development or any part thereof as may be approved or required by the relevant authorities.



A PERFECTLY ZEN PLACE *to* AWAKEN ALL SENSES

The low-rise clubhouse complex serves as a shared recreational space for the stately patrons of THE RIVUS. Designed to echo the tropical resort vibe, the laidback pavilion boasts a liberal line-up of facilities, each fitted to the highest standards to provide THE RIVUS residents and guests with luxurious top-class entertainment.

MARINA BAY – A SYMBOL *of* LIFESTYLE *and* PROSPERITY

Frequenting the river may well be one of the core principles of THE RIVUS lifestyle. Off the meandering shore of the villas lies the marina, providing 40 berths of either centralised or parallel mooring design. At a depth of 2-2.9m across all berths and waterways, THE RIVUS and its surrounding waters have been thoroughly studied and proven safe and easily operable for powerboats and river yachts.



Water-and-land traffic flow is integral to the design of the project: the swing bridge serves conventionally as a driveway and pedestrian overpass, rotating to open the water passage between the berths and the Dong Nai River. To guarantee the utmost security, the berth gates restrict marina walkway access to the uninvited. THE RIVUS proudly supports urgent servicing, heavy-duty provisioning, and other emergencies with an on-site service gantry.

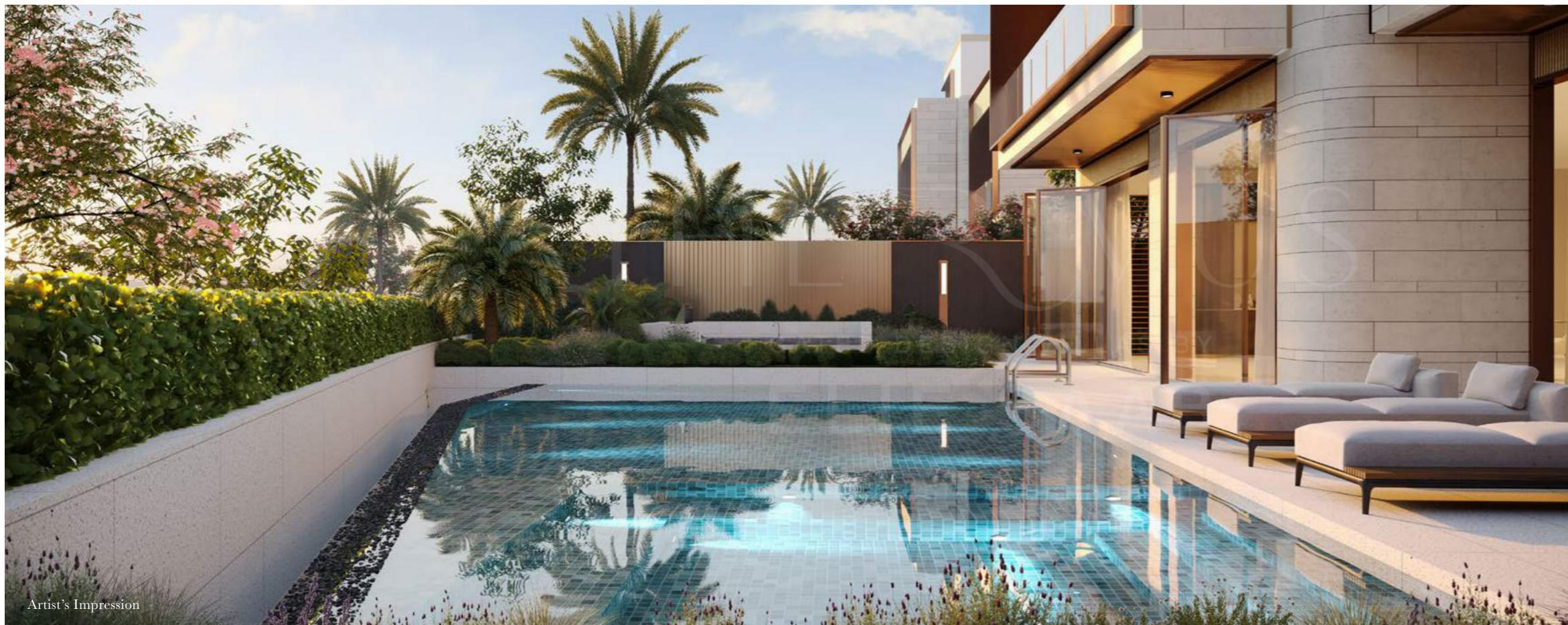
FACILITATING *a* PRESTIGIOUS COMMUNITY

Beyond the villas, THE RIVUS dedicates vast portions of the project area and resources to cater to the residents' every desire and need.

From lifeguarded pools to the gymnasium with personal training service, from function rooms to the barbeque area and outdoor cinema, a motley of facilities is available for reservation and use at the patron's leisure. Enjoy the built-in conveniences at THE RIVUS and connect with a community of similar prestige.



FULFILL YOUR GRANDEST WISH



Artist's Impression



THE RIVUS provides the ideal lifestyle for the elite, inspired and influenced by the Haute Couture lifestyle. Sustained services in all aspects are provided to maintain the high living standards expected of the residence. Bespoke and meticulously organised, the residence security, cleaning services, guided parking, household maintenance and other customer and technical services ensure that the daily essentials are well provided. Residents of THE RIVUS can spend time on what matters most and enjoy a world of unlimited possibilities and amenities.



GREAT MINDS COME TOGETHER
to CREATE GENIUS

ELIE SAAB partners with globally recognised developers to design luxury residences such as Cairo Gate, Dubai Hills Estate, Emaar Beachfront, and Elie Saab Arabian Ranches. These properties set the benchmark for luxurious living around the world, with beautifully branded interiors designed by ELIE SAAB. Join an elite community that truly understands the meaning of fine living.



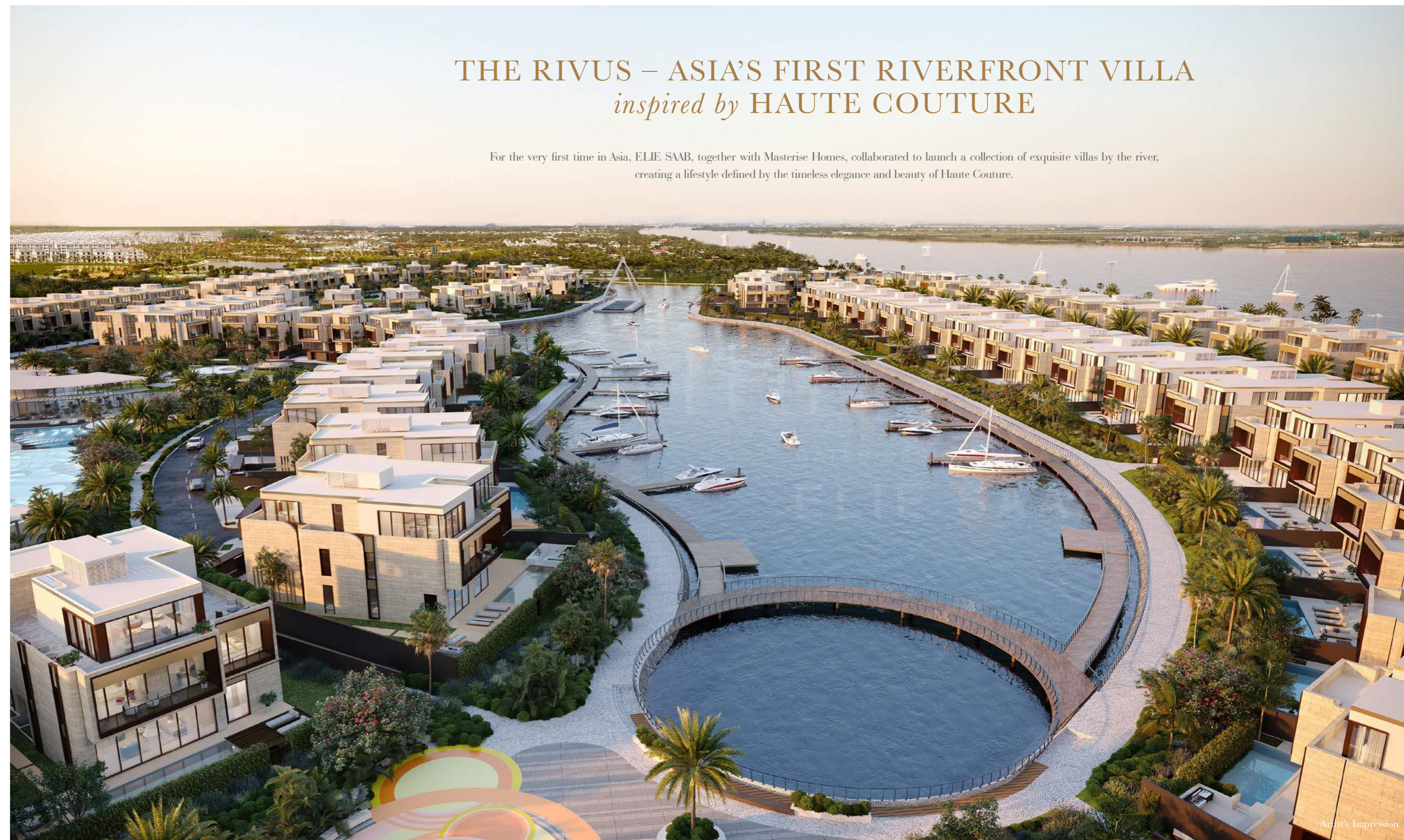
MASTERISE HOMES



ELIE SAAB

THE RIVUS – ASIA'S FIRST RIVERFRONT VILLA *inspired by HAUTE COUTURE*

For the very first time in Asia, ELIE SAAB, together with Masterise Homes, collaborated to launch a collection of exquisite villas by the river, creating a lifestyle defined by the timeless elegance and beauty of Haute Couture.



Artist's Impression



INTERNATIONAL REAL ESTATE DEVELOPER

MASTERPLAN

WORLD-CLASS STANDARDS AND GLOBAL INSIGHTS OF MASTERISE HOMES

Masterise Homes - a member of Masterise Group is a pioneer in bringing world-class excellence to the development, operations, and management of luxury real estate products and services in the Vietnamese market.

With a one-of-a-kind portfolio comprising the largest Branded Residences in South East Asia, Masterise Homes demonstrates world-class capabilities via a strategic partnership with Marriott International, the largest hotel brand in the world with iconic brands of Marriott, JW Marriott and The Ritz-Carlton. At Masterise Homes, we are committed to developing exquisite real estate projects to impeccable standards for the ultimate customer experience, delivering tangible and enduring value.



MASTERISE HOMES

MASTERPIECES

AN EVER-GROWING COLLECTION OF EXCELLENCE

Masterise Homes offers a wide range of distinct luxury and ultra-luxury developments nationwide and will continue to provide the ultimate residence and lifestyle experience.



GRAND MARINA, SAIGON

The first Marriott-branded residence in Vietnam opens an exciting new chapter in the country's history. It offers an exceptionally rare opportunity to call an iconic waterfront District 1 address home.



THE RITZ-CARTON RESIDENCES, HANOI AT THE GRAND

A branded residence in a class of its own, located on the prestigious Hang Bai Street, in the heart of Hanoi's Central Business District.



MASTERI THAO DIEN

The first luxury project preferred by the district's international community and a true catalyst for the growth of real estate developments in the area.



M-ONE NAM SÀI GÒN

The pinnacle of design, built for the modern young family, located at the center of District 7.



M-ONE GIA DINH

A modern project with comfortable living spaces in the heart of the Go Vap District.



MASTERI AN PHÚ

A luxury residence in District 2, offering resort-style living for the discerning local and international community.



MILLENNIUM

A premium project in the Central Business District of HCMC.



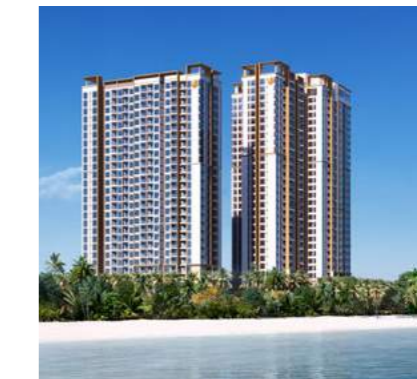
LUMIÈRE RIVERSIDE

A gem of the Thao Dien Neighborhood, masterfully blending an eco-friendly lifestyle with luxurious living.



MASTERI CENTRE POINT

A premium compound residence offering an elevated lifestyle, located in Grand Park, the largest township in HCMC.



MASTERI WATERFRONT

A high-end project strategically located in the heart of Ocean Park in East Hanoi. Masteri Waterfront creates an extraordinary lifestyle for its exclusive audience.



MASTERI WEST HEIGHTS


A premium development in Smart City, a prime spot in West Hanoi. Modern aesthetics and an abundance of exclusive amenities make this a home unlike any other.



MASTERISE HOMES

Project Address: THE RIVUS, District 9 (Thu Duc City), Ho Chi Minh City

Sales Consultant Area: 179 Hanoi Highway, Thao Dien Ward, District 2 (Thu Duc City), Ho Chi Minh City

 0828 159 159

 therivus@masterisehomes.com

 masterisehomes.com/the-rivus

 facebook.com/OfficialTheRivus



 Scan me

Disclaimer: Whilst every care has been taken to ensure accuracy in the preparation of the information contained herein, no warranties whatsoever are given or legal representation provided in respect thereon.
The developer reserves the right to modify information of the development or any part thereof as may be approved or required by the relevant authorities.



MASTERISE HOMES