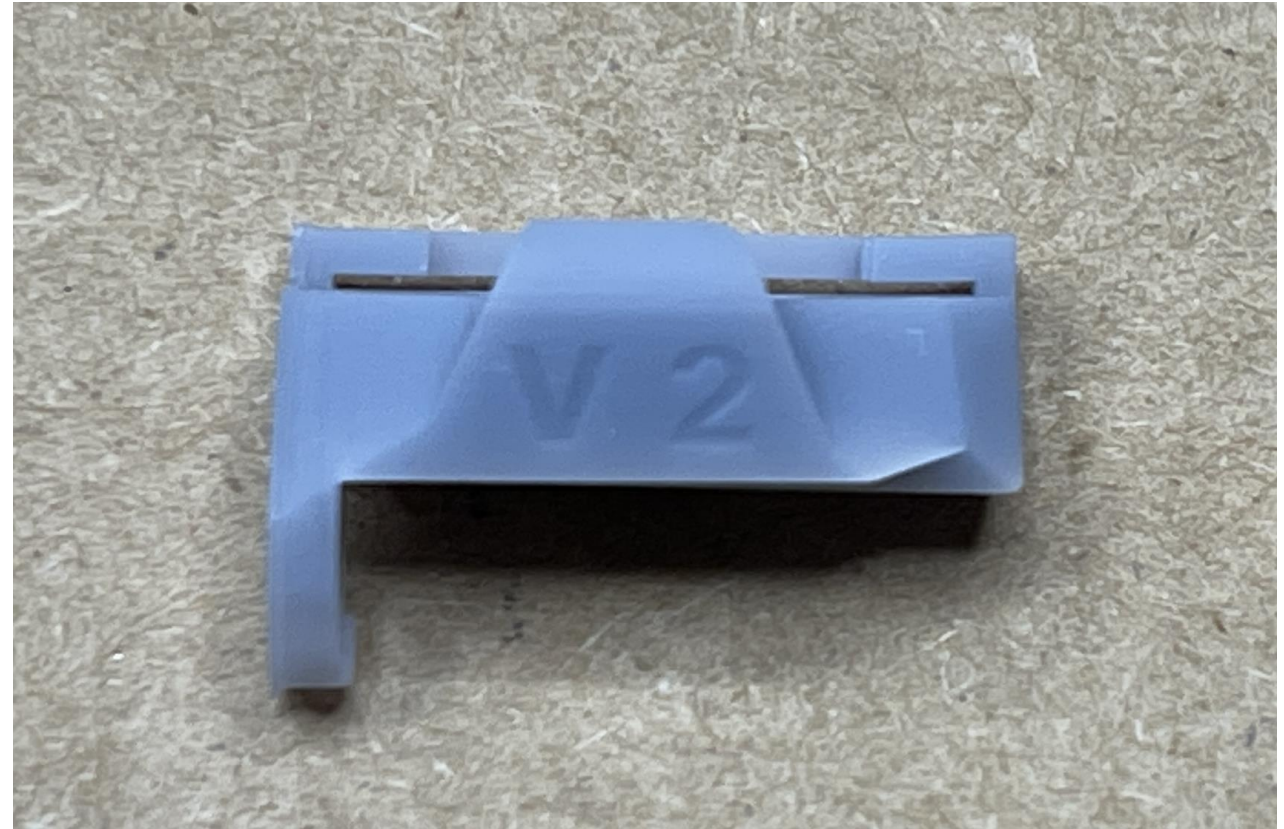


PS5 Smart Trigger V2 Mount Information

- Then also make the small modification to the trigger shown in this document. Only follow this document if your mounts have the "V2" indentation on the top as shown below. The V1 mounts will not work if the modification in this document is performed.



Method 1: Check the part number on the back of the controller

BDM-010



BDM-020

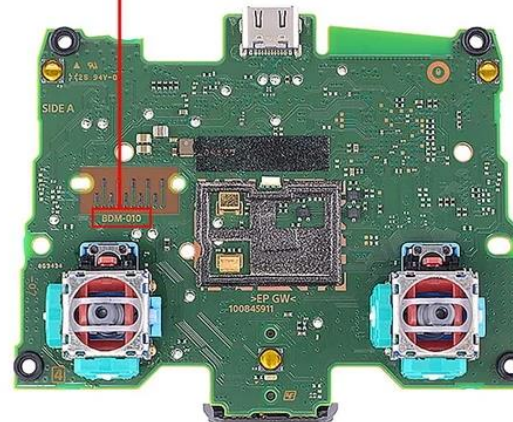


- As mentioned, there is a new controller version from Sony. Shown here are 2 methods to tell which controller you have.

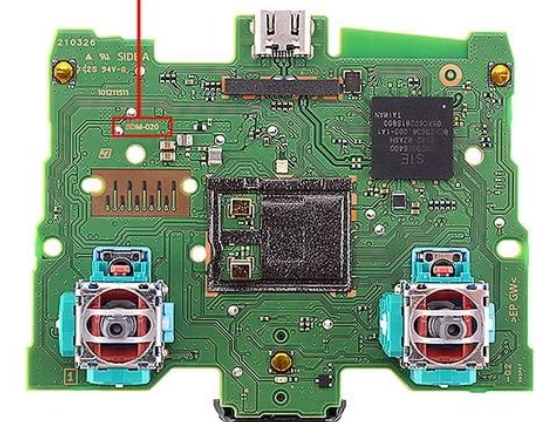
Method 2: Take apart your controller and check the mainboard



BDM-010



BDM-020



BEFORE

AFTER

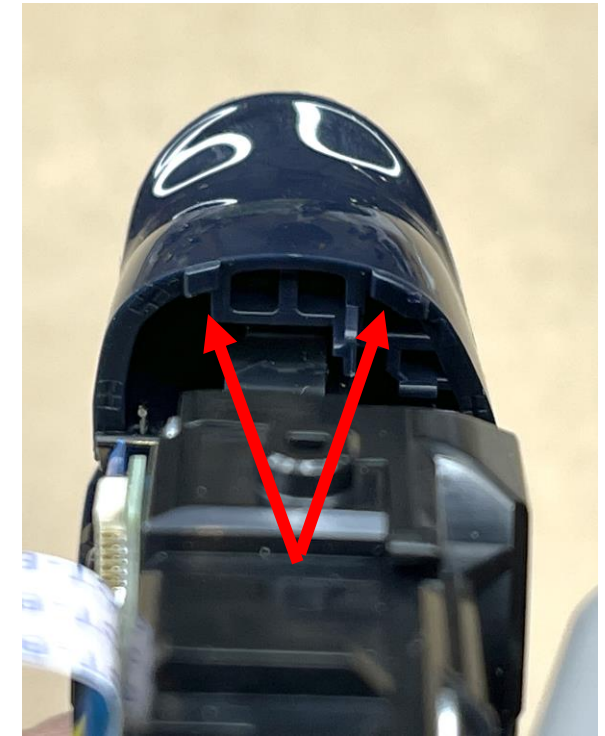
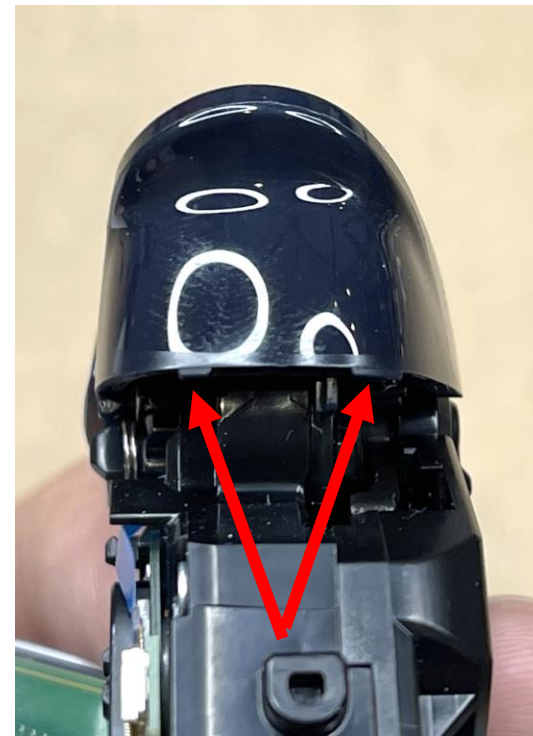


- For both BDM-010 and BDM-020 controllers you must remove the small tab on the back side of the controller.

This can be done with a sharp knife or a pair of side cutters. Just be sure the tab is cut off completely and is flush with the rest of the trigger.

This is the only modification needed for BDM-010 controllers.

*Note, removing this tab will not affect the trigger use without the smart trigger installed. It serves no purpose and aftermarket triggers do not have it.



- Additionally for BDM-020 controllers you must remove 2 additional bumps along the top edge of the trigger. These can be cut or sanded flat with the rest of the trigger.

Once removed the BDM-020 is also ready for the V2 mount installation.