

PS5 V3.x Rapid Fire and Programmable Remap Mod Installation

This guide covers the basic installation of our V3.0 Rapid Fire and Programmable Remap mods. The basic installation is the exact same for both mods. Adding buttons or paddles is not covered in this guide.

For installation you will need a few tools. A Philips PH00 size screwdriver is required for opening the controller. A plastic pry tool is recommended, but not necessary.

You will need a soldering iron and solder. Only use a soldering iron set to 350 degrees Celsius or lower (30 watt or less for non-adjustable irons). Using a higher temp iron can easily damage the mod causing pads to delaminate.

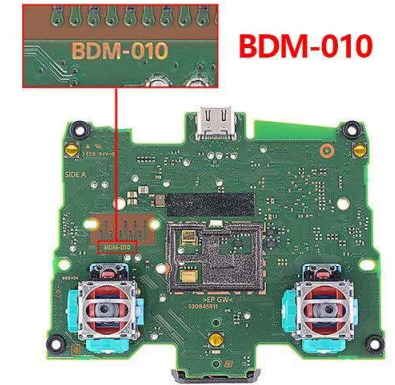
A pair of needle nose pliers and tweezers are great help in removing and installing the many ribbon cables inside the controller.

There are currently 3 versions of Sony controllers available. The BDM-010, BDM-020 and BDM-030. The image to the right shows how to identify them. The V3.0 mods will work ONLY in BDM-030 controllers. For BDM-010 and BDM-020 you must use our V2.x mods.

1: Check the shape of the side or the spring of R2/L2 trigger



2: Take apart your controller and check the mainboard



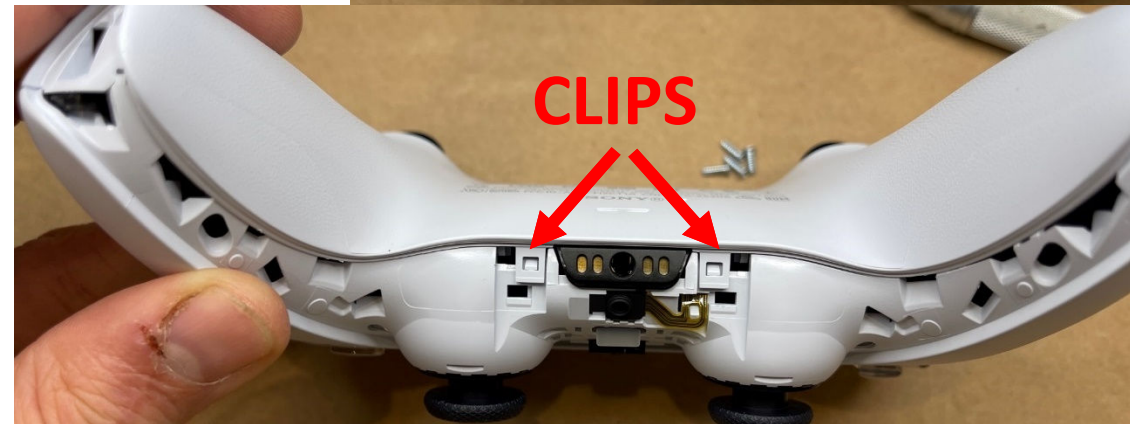
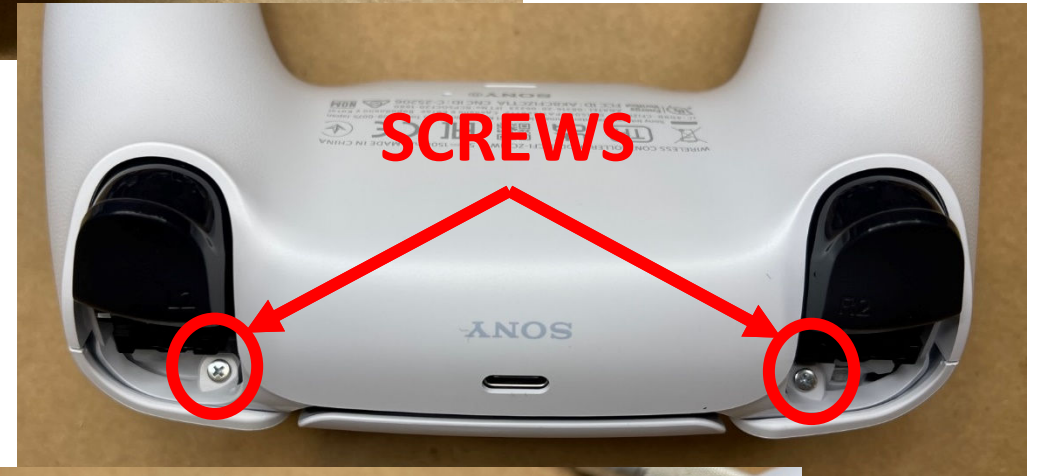
Opening the Controller

- To open the controller, you must first remove the trim piece around the thumb sticks and PS button. To do this start with the controller upside-down. Use a pry tool (your fingernail can also work just as well) place it between the shell and the trim to pop it out. Do the same to both sides.
- Flip the controller over and slowly work up both sides of the trim piece releasing the clips.
- Once all the clips are released you will need to lift the bottom of the trim piece over the thumb sticks and then out.
- Once removed flip the controller back over to reveal the 2 Phillips PH00 screws and remove them.



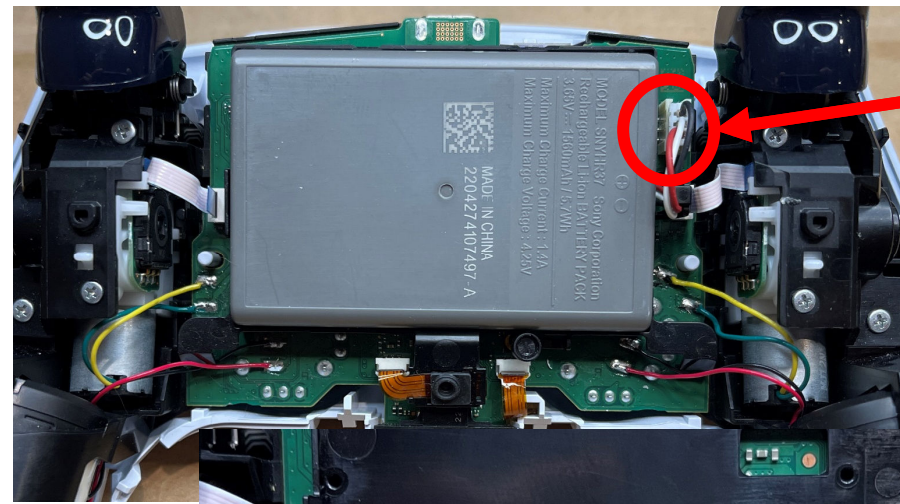
Opening the Controller Continued

- Next you will need to remove the R1 and L1 buttons. Again, using the pry tool, you will need to get behind the button, as shown in the picture, and pop it out. This takes a good bit more force than the trim piece to remove. If you do not have a pry tool, use the PH00 screwdriver or a pair of tweezers.
- Once removed you will see the second set of PH00 screws that must be removed.
- The final step to remove the back cover is to separate the shell starting at the end of one of the grips. While separating you will need to release the 2 clips shown in the bottom picture. Separate from the bottom opening like a clamshell until you feel resistance then push the shell up and out away from the triggers.

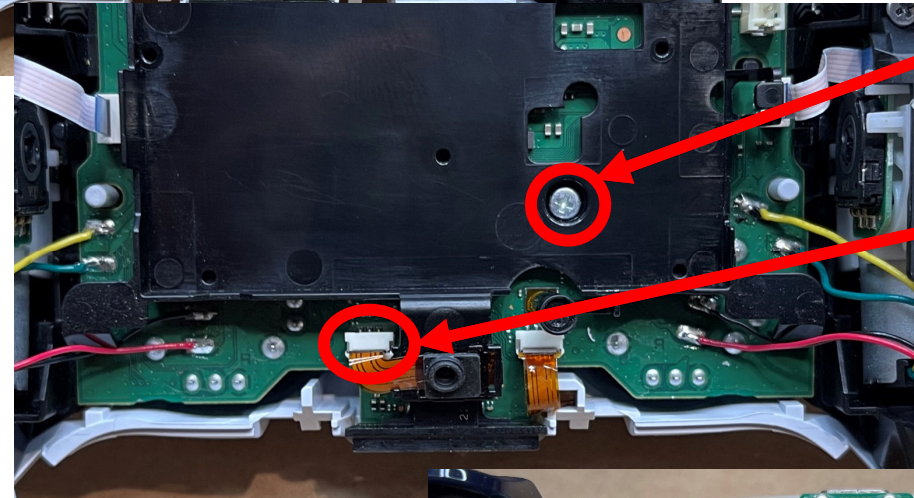


Opening the Controller Continued

- With the controller open you can remove the battery by unplugging from the circuit board.
- This reveals the battery tray which is held in by one Philips PH00 screw. Remove this screw. You will also need to unplug the microphone which is clipped into the bottom of the tray.
- The final step is to unplug all of the ribbon cables from the main circuit board. Some of these are stubborn and best removed by grasping firmly as close to the plug as possible with a pair of needle nose pliers.



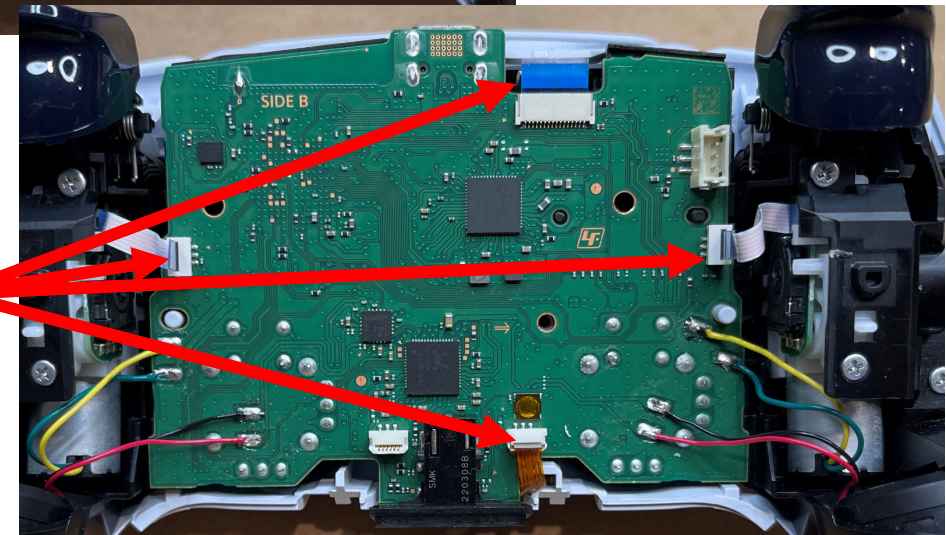
BATTERY PLUG



SCREW

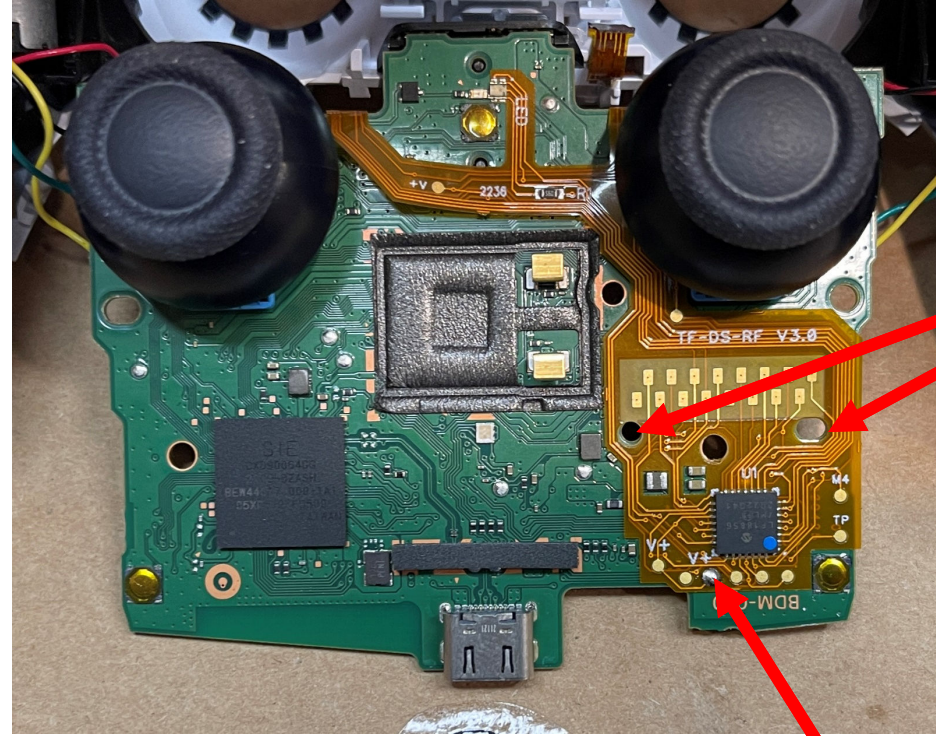
**UNPLUG
MIC**

RIBBON CABLES

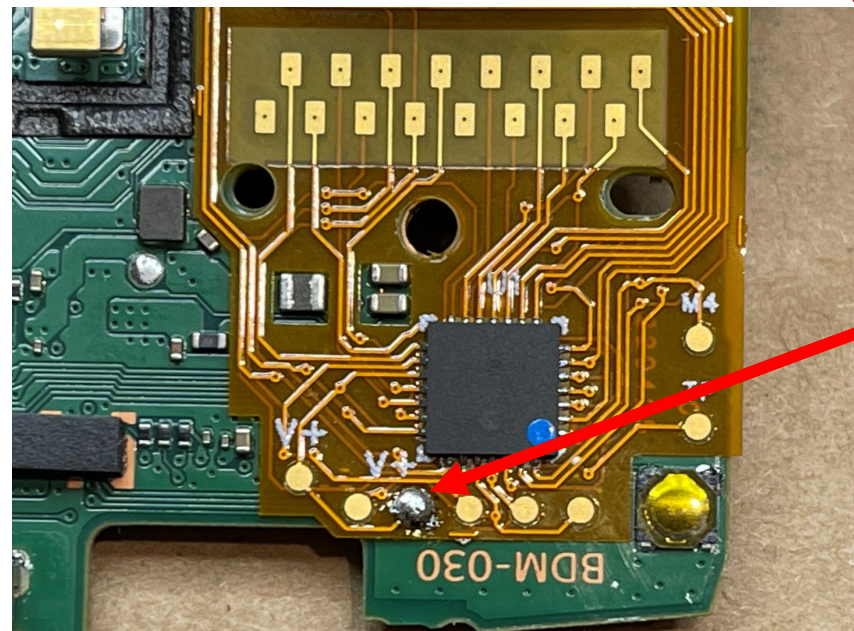


Installing the mod: Connecting Power

- With the ribbon cables disconnected you can now lift out the circuit board and flip it over to begin the mod installation. Be careful as there are still wires connected for the rumble motors.
- Start by lining up the mod with the holes on either side of the section of black rectangles. It is highly important that the mod is aligned correctly with these holes.
 - **DO NOT use any hot glue, tape or allow anything to interfere with the exposed area between the holes. This will make some or all your buttons nonfunctional**
- The power connection location is near the edge of the mod labeled "V+" There is a solder pad with a hole through it. This will line up with the pad on the main controller board underneath. You must solder this pad to the mod as shown.
- Although it is not necessary to use hot glue or tape to hold down the mod, if you would like to do so you can do this on the back side of the flex behind the main IC chip, or on the thin sections near the LED.



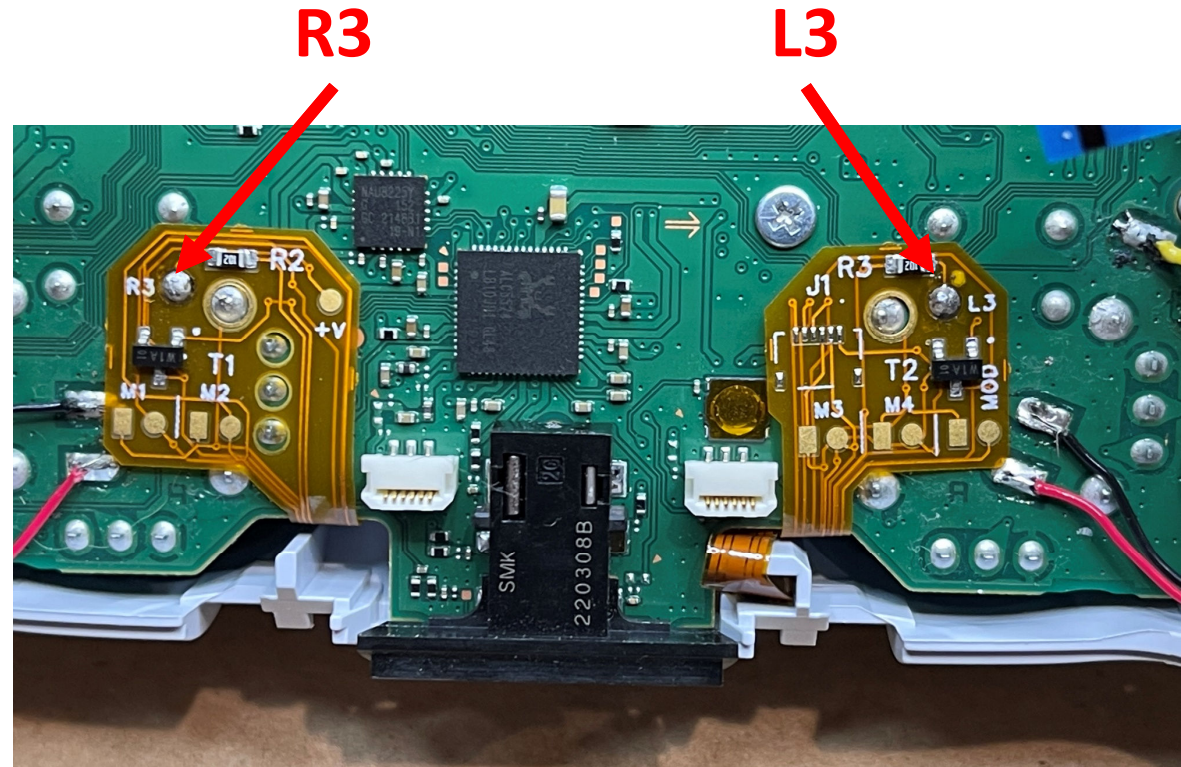
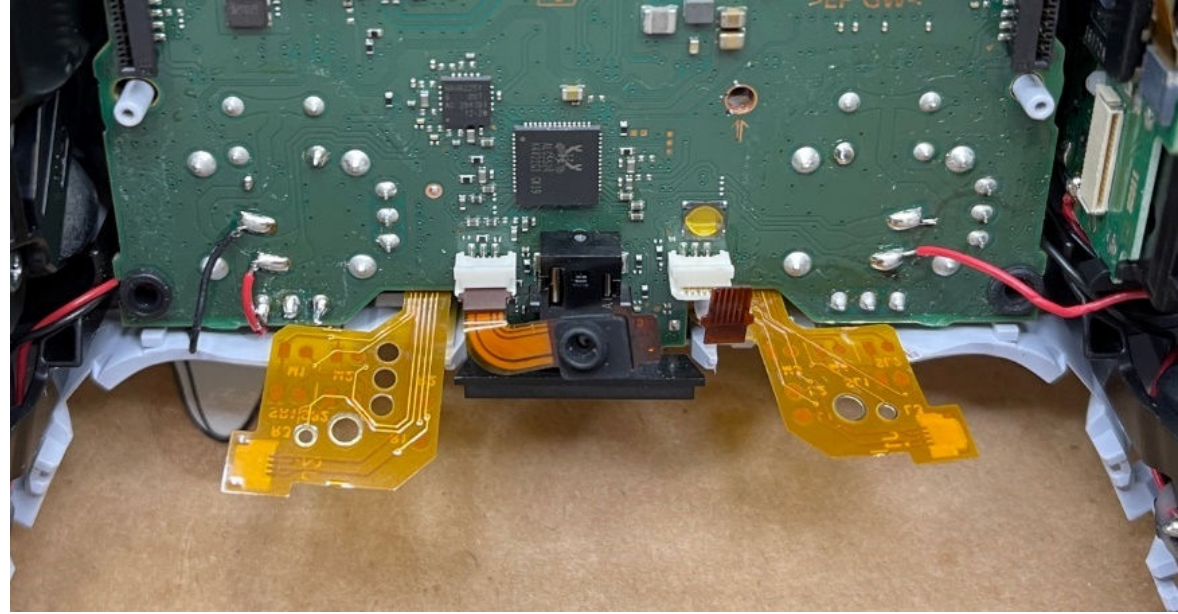
LINE UP HOLES



**SOLDER THE
POWER
CONNECTION**

Installing the mod: Connecting R3 and L3

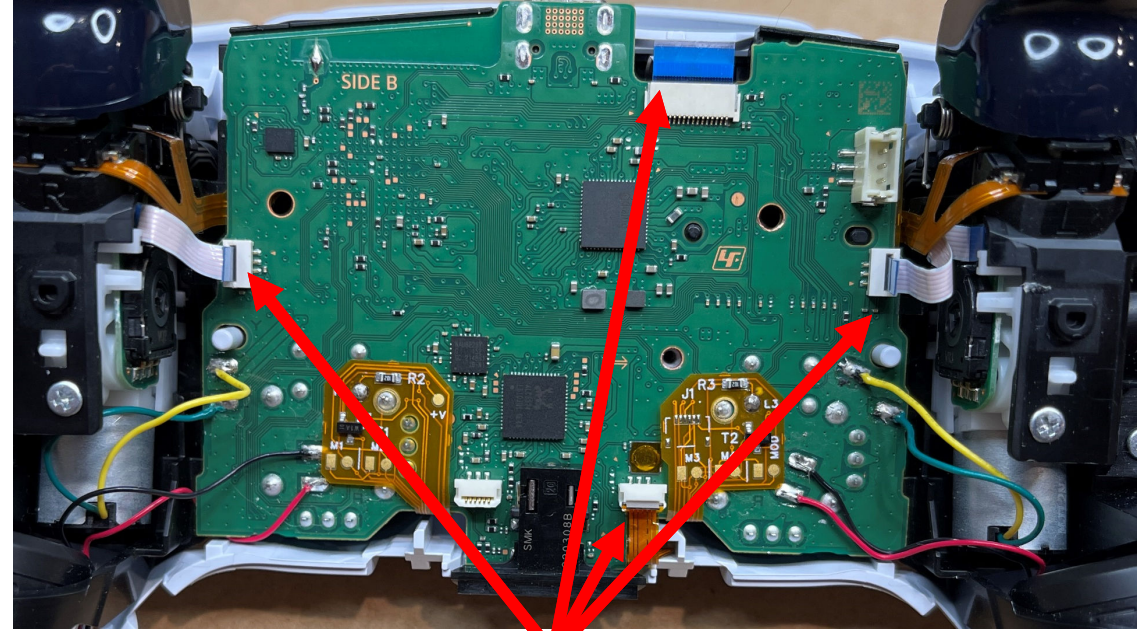
- With the holes lined up and power connected you can flip the board back over and place it back into the controller. You should have the 2 legs of the mod sticking up at the bottom.
- One at a time fold the legs over and solder the R3 and L3 connections to the main Controller circuit board.



Reassembling the controller

- The basic mod installation is now complete. If you are not installing buttons or paddles you can now assemble the controller and begin using it.
- Covered separately, you can find our guide on installing buttons or paddles. Both the Rapid Fire mod and the Programmable Remap mods allow for adding up to 4 remap buttons or paddles to the controller. These are soldered to the pads labeled M1, M2, M3 and M4. The rapid fire mod can have an additional "Mod button" connected to the pads labeled "MOD". This button can be used instead of left on the D-pad for activating features.
- To reassemble your controller.
- Ensure all ribbon cables are connected.
- Reinstall the battery tray and put in the single Philips PH00 screw.
- Plug in the battery and place it in the tray.
- Place the back cover and reinstall the 4 Philips PH00 screws.
- Press back in the R1 and L1 bumper buttons.
- Re-install the black trim over the thumb sticks.

Excellent your Done!



RIBBON CABLES

BATTERY

