

# LIPOSCULPTLITE SYSTEM

www.aocare.com

## User Manual

54 Diodes-150mw-635/650nm

**AAOCARE.COM**  
22732 Granite Way  
Suite B  
Laguna hills CA 92653  
support@aaocare.com

Register your device today at [aaocare.com](http://aaocare.com) and  
Receive our one year extended warranty.

Warranty will cover manufacturing defects and  
we will repair or replace your device at no cost.



Thank you for purchasing the HKS907 LIPO-LASER SYSTEM.  
Please read through the entire user manual and follow the instructions in detail when operating the machine.

Please contact us with any questions you may have.  
You may contact us at support@aaocare.com

## 1. GENERAL WARNINGS AND CAUTIONS

This device is intended only for the use indicated in the section entitled "Indications for Use." Do not use this device in any other manner or for any other purpose. Otherwise, serious injury could occur.

This device must be operated as instructed in this manual.

### Patients using the following medical equipment cannot use this device:

1. Implanted cardiac pacemakers or other implanted electronic devices.
2. Life-sustaining artificial heart or lung machines.
3. Portable ECG measurement equipment.

### Do not use this device if you are, have or suffer from one of the following:

1. People who have fever or illness.
2. Pregnant women.
3. People with hemorrhagic disease, trauma, vascular rupture, skin inflammation skin disease.
4. People who are anemic, erythroid, aplasia or hemorrhage.
5. People who suffer from dysphemia.
6. Patients with high blood pressure, tumor disease, asthma, deep vein thrombosis.
7. People who suffer from heart failure or heart disease. Varix, thyroid, cancer.
8. People with an abnormal immune system.

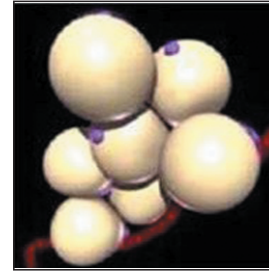
## 2. PURPOSE OF THE DEVICE - INDICATIONS FOR USE

This device is a non-invasive, aesthetic treatment for the reduction in circumference of the waist.

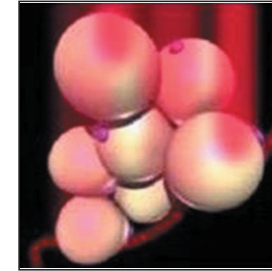
## 3. HOW IT WORKS

Our slimming pad emits levels of laser energy, which creates a chemical signal in the fat cells, breaking down the stored triglycerides into free fatty acids and glycerol, releasing them through channels in the cell membranes. The fatty acids and glycerol are then transported around the body to tissues that will use them during metabolism to create energy. This process of fatty acid release is a natural response of the body when the body needs to use stored energy reserves. Laser lipolysis does not cause any unnatural reaction in the body, nor does it affect or damage any surrounding structures such as skin, blood vessels and peripheral nerves. A period of exercise post

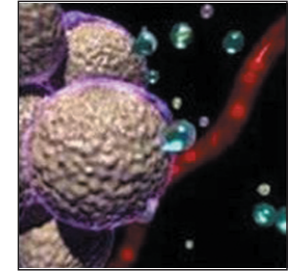
treatment will increase metabolism and help with the elimination of the fatty acids from the body.



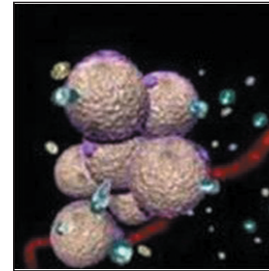
Fat Cells-Adipocytes



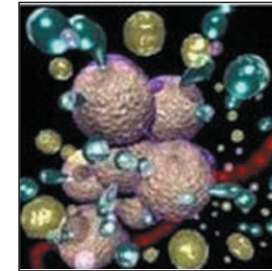
Laser energy from Laser lipo irradiates adipocytes



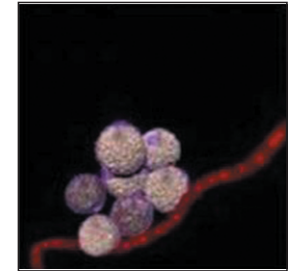
Pores have formed on the Adipocyte, allowing its contents to spill out.



Water, glycerol and free fatty acids move into the interstitial space.



More water, glycerol and free fatty acids spill out



Adipocytes are significantly reduced in size while blood vessels are unaffected.

## 4. TECHNOLOGY PARAMETERS

Wave length	635/650nm
Energy output	54X150mW
Voltage	AC110V-240V/50Hz-60Hz
Diode laser type	Mitsubishi ML 101J27
Safety	On Board Diagnostics
Classification	Electrical Class 1, Type B applied part
Cooling requirements	Air Cooling
Mode of operation	Continuous/Pulse
Diodes standard	54 Diodes
Environmental requirements	0-40 Degree Non-condensing humidity Below 75% RH
Package size	18X13X7 inch
Weight	14 Lbs
Accessory list	Elastic bands, Power cord, Goggles

## 5. OPERATE INSTRUCTIONS

### 5-1. PARTS



Elastic bands-5pcs

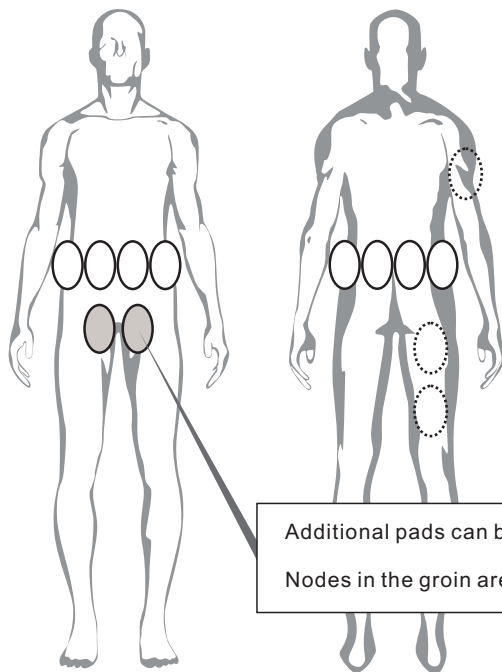


Power Cable



Eyewear

### 5-2. PLACEMENT OF TREATMENT PADS

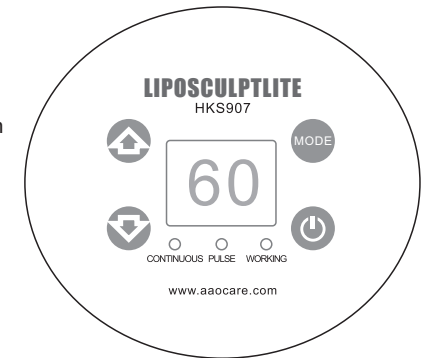


Additional pads can be placed over the Lymph Nodes in the groin area.

Lie on back and loosely place the adjustable band(s) around the area to be treated. Place treatment pads under the adjustable band(s) to cover the treatment area. Ensure treatment pads are connected to main unit.

### 5-3. CONTROL PANEL

- Timer Adjustment: Max 60 Min  
Each click is 10 Minutes
- Continuous for lighter skin  
Pulse for darker skin
- ON/OFF



## 6. LIPO LASER TREATMENT

### 6-1. NOTICE BEFORE OPERATION

Clean the treatment area and make sure there is no grease or cosmetics on the exposed skin.

### 6-2. TREATMENT COURSE SETTING

One treatment time is between 20-30 minutes and you should only treat one part at a time. To treat the whole waist, you may need to receive multiple treatments to achieve the ideal weight loss effect.

Lipolaser	weeks/course
3 treatments per week in first Month	Each time 30minutes
2 treatments per week in second Month	Each time 20minutes

### 6-3. OPERATION PROCESS

1. Clean treatment area.
2. Mark the size of treatment area.
3. Begin the Lipolaser treatment, use the belt to fix the pad on the treatment parts of body, wear goggles.

### 6-4. FOR MAXIMUM RESULTS FOLLOW THESE RECOMMENDATIONS

1. Drink one half your body weight in ounces of water daily
2. Don't eat for one hour prior to and for two hours following each session
3. Any type of physical exercise that you can do in terms of cardio will help you better reach your weight loss goals.
4. You may use the laser on these areas: stomach, hips, thighs, calves, back, baby bulge, arms, male breasts and chin.

## 6.FREQUENTLY ASKED QUESTIONS.

Q1. How many treatments will I need?

A1. We recommend 3 treatments per week for the first month and 2 treatments per week thereafter.

Q2. Can I have more than one area treated at one time?

A2. Yes.

Q3. Will the inches stay off after a treatment?

A3. If you maintain a healthy diet and exercise routine, yes. It is also recommended to do touch up treatments as needed.

Q4. Does the treatment hurt?

A4. No, this is a non-invasive procedure that can be done at home. There is no pain at all.

Q5. What results should I expect?

A5. A typical client can lose 1-3 inches during a single session around the stomach; this is also heavily dependent on the depth of the fat layer. Results in other target areas will be more varied, but commitment to the treatment and a sensible eating plan, will allow for maximum results. It is important to exercise after each treatment to allow the fat that was released during treatment to be used as energy. A typical client can expect to reduce an area by 1-2 dress sizes during a course of treatment.

Q6. How long will the results last?

A6. As long as you maintain your weight, diet and exercise, the inches lost will remain gone. If you don't exercise after the lipo laser treatment, the results will be temporary. Booster sessions following a course of treatments are highly recommended to keep your body in ideal shape.

Q7. What areas of the body can be treated?

A7. The Lipo treatment can be performed on the following areas: stomach, arms, hips, thighs, calves, back, baby bulge, male breasts, and chin.

Q8. Are the laser treatments safe?

A8. Yes, lipo laser treatments are completely non-invasive. Low level laser technology has been studied and used for over 30 years for many biomedical purposes. Not only is the procedure safe, but it is quick and pain-free. There is no recovery time needed and you can return to normal activities directly after the treatment.

Q9. What exercise should be done post treatment?

A9. Cardio-vascular exercise is recommended, such as running, swimming, power walking, etc. Make sure that whichever exercise you chose is strenuous enough to spike your heart rate to the point of perspiration.

Q10. Why am I putting weight back on?

A10. There are potentially three reasons for this:

1. Over eating or drinking
2. Under eating
3. Not exercising enough within 24 hours post treatment.

Q11. Do I need to wear protective laser safety glasses?

A11. Yes, always wear the provided goggles at all times during treatment. These special safety glasses allow you to wear your regular eyeglasses underneath so you can read and move comfortably.

Q12. How long will the treatment take?

A12. Treatments take between 20 to 30 minutes depending what area the system is being used on. See section 6.2

## 8.CLEANING

Clean the device after each use. Switch off the equipment and wipe the surface with a soft, wet tissue, especially the window of the hand piece. Do not pour any liquids onto the system.

## 9. MAINTENANCE

- 1) Do not use in a place with high temperature, humidity, dust, smoke or vapor.
- 2) If there is a failure, please shut off the power immediately and send it to the manufacturer for maintenance. Do not attempt to repair on your own.

## 10. STORAGE

Do not store in a damp area. This device contains electronic components that can be damaged by moisture in the air.