

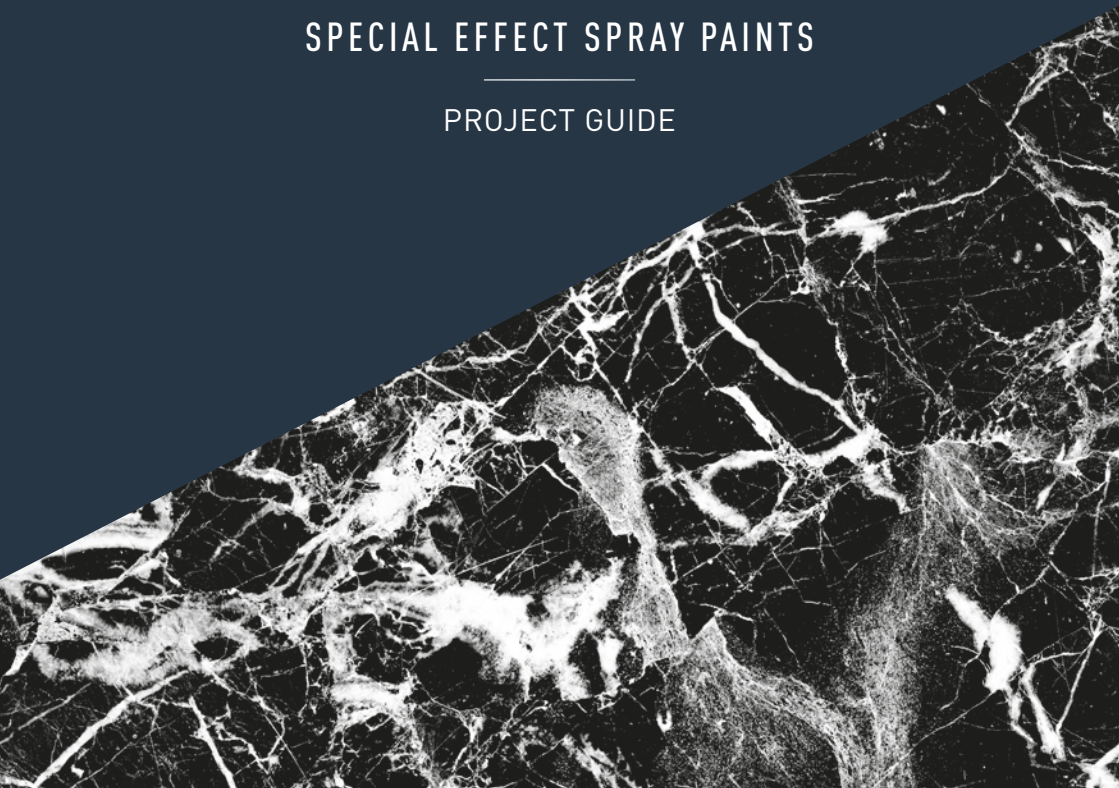
# CRAIG & ROSE<sup>®</sup>

— SINCE 1829 —

## ARTISAN<sup>™</sup>

SPECIAL EFFECT SPRAY PAINTS

PROJECT GUIDE



# IMPORTANT STEPS

---

Refer to icons referenced on each project page and follow the recommended steps to achieve a high quality finish.



## SAND

Sand surface slightly with extra fine P400-P600 sandpaper so the paint better adheres and allows for a smoother finish.



## WIPE

Wipe down the surface with a damp cloth so it is free from grease, rust and dirt. Ensure surface is totally dry before painting. (Note: Oil from your hands will cause imperfections in the finished paint)



## MASK

Mask off any areas that you don't want painted with good quality painters tape.



## COVER

Use drop sheets or newspaper to cover surfaces and protect from overspray.



## SHAKE

Shake can for at least three minutes after first rattle before use and regularly during use.



## PRIME

Prime before painting to ensure superior adhesion of the paint to the surface. On porous materials the primer also assists in sealing the surface and giving a smoother finish.



## PROTECT

For an ultra durable finish, coat with Craig & Rose Artisan™ Clear Coat Gloss or Semi Gloss.



## CLEAR

Prevent blocking of the nozzle by turning the can upside down and spraying until clear gas emerges, then wipe the front of the nozzle clean.



## CLEAN

Clean up overspray while it is still wet with white spirit.

# ARTISAN™

— SPECIAL EFFECT SPRAY PAINTS —

Our Artisan™ specialty collection of decorative paints and finishes allows you to create bold, beautiful and bespoke effects in your home. With our high performance spray paints, you can transform items both big and small, quickly and without fuss.

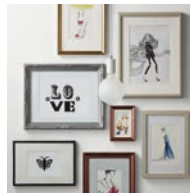
## CONTENTS



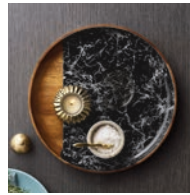
Crackle Effect.....4



Stencils & Spots.....6



Bright Effect.....8



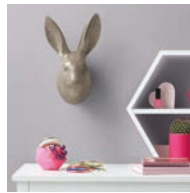
Marble Effect.....10



Granite Effect.....12



Metallic Effect.....14



Diamond Effect.....16



Frosted Glass Effect.....18



Ombre Effect.....20



Magnetic Chalkboard...22



Outdoor Projects.....24



More Inspiration.....26



CRACKLE EFFECT OVER GLOSS HOG BRISTLE



## CRACKLE EFFECT

Craig & Rose Artisan™ Crackle Effect delivers an instant antique crackle finish. Simply spray the product over a previously painted Craig & Rose Artisan™ surface and watch your item transform into a personalised masterpiece right in front of your eyes.



WIPE



COVER



SHAKE



PROTECT



CLEAR



CLEAN

Ensure you complete these steps to achieve the best results. Refer to the Important Steps page on the inside cover.



**1. Before you start you will require the following items to complete the project:**

- 1 can of Craig & Rose Artisan™ Crackle Effect White
- 1 can of Craig & Rose Artisan™ High Performance Enamel Hog Bristle
- 1 can of Craig & Rose Artisan™ Clear Coat Semi Gloss
- Damp cloth
- Drop sheet or newspaper

**2. Spray surface with Craig & Rose Artisan™ High Performance Hog Bristle.**

Hold can upright 15 to 25cm from the surface. Spray with smooth, even strokes parallel to the surface. Apply in one or more light coats, as opposed to one heavy coat. Continue coating until the desired opacity and finish is achieved. For best results wait 2 hours for the enamel to dry before applying Craig & Rose Artisan™ Crackle Effect.

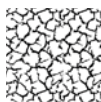
**3. Spray 1 coat of Craig & Rose Artisan™ Crackle Effect White.**

Hold can upright 15 to 25cm from the surface. Spray with smooth, even strokes parallel to the surface. Apply Craig & Rose Artisan™ Crackle Effect in a single coat. DO NOT use multiple mist coats. Wait for 3-5 minutes for the crackled effect to start forming. Leave for at least 2 hours before applying a protective clear coat.

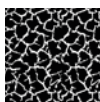
### Design Tip

For smaller crackle apply one light coat, for larger crackle, use a single heavy 'opaque' coat. DO NOT go back over areas where crackle has been applied more than 15 seconds previously. Practice on a piece of excess Craig & Rose Artisan™ Enamel coated timber to get the desired crackle size before application.

Available in:

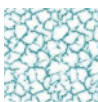


White Crackle over Black



Black Crackle over White

Use Craig & Rose Artisan™ Crackle Effect over different Craig & Rose Artisan™ colours.



White Crackle over Go Go Blue



White Crackle over Hog Bristle



Black Crackle over True Blue

Note: Craig & Rose Artisan™ Crackle Effect must be used over Craig & Rose Artisan™ colours including Metallics to achieve the crackle effect. Not to be used over Craig & Rose Artisan™ Bright Effect.



GLOSS BLACK

d

GLOSS GRASS COURT

CONGRATS





## STENCILS & SPOTS

Craig & Rose Artisan™ High Performance Enamel is perfect for getting creative with stencils. Have some fun experimenting with the wide range of colours to achieve your own design.



WIPE



COVER



SHAKE



CLEAR



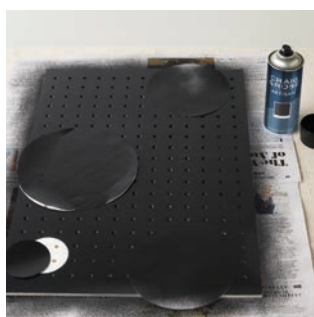
CLEAN

Ensure you complete these steps to achieve the best results. Refer to the Important Steps page on the inside cover.



**1. Before you start you will require the following items to complete the project:**

- 1 can Craig & Rose Artisan™ High Performance Enamel Black
- 1 can Craig & Rose Artisan™ High Performance Enamel Grass Court
- Box cutter
- Blu-Tack
- Cardboard or cereal boxes
- Damp cloth
- Drop sheet or newspaper
- Lazy Susan
- Round items to trace around



**2. Cut out circles from old cereal boxes or suitable cardboard and stick onto surface with Blu-Tack.**

Hold can upright 15 to 25cm from the surface. Spray 2 coats of Craig & Rose Artisan™ High Performance Enamel Black with smooth, even strokes parallel to the surface. Remove stencils after 20 minutes when dry.



**3. Spray shelves and pegs with 2 coats of Craig & Rose Artisan™ High Performance Enamel Grass Court.**

To help achieve an even spray, slowly spin the Lazy Susan to paint all sides. Turn shelves over after 20 minutes and paint other side.

### Design Tip

If your peg board is bare timber, lightly sand with P400-P600 sand paper, apply one coat of Craig & Rose Artisan™ Undercoat followed by two coats of Craig & Rose Artisan™ High Performance Enamel White.

**Colours used:**



Black

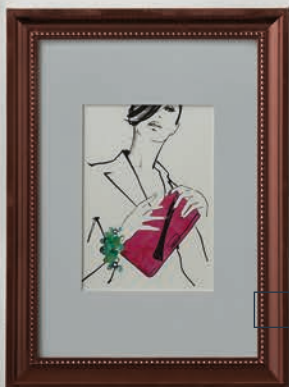


Grass Court

BRIGHT EFFECT GOLD



BRIGHT EFFECT CHROME



BRIGHT EFFECT COPPER ROSE





## BRIGHT EFFECT

Craig & Rose Artisan™ Bright Effect allows you to reproduce the look of precious metals with ease. Transform usually mundane items around the home into brilliant feature pieces.



WIPE



COVER



SHAKE



CLEAR



CLEAN

Ensure you complete these steps to achieve the best results. Refer to the Important Steps page on the inside cover.



**1. Before you start you will require the following items to complete the project:**

- 1 can Craig & Rose Artisan™ Bright Effect of your desired colour
- Damp cloth
- Drop sheet or newspaper
- Lazy Susan



**2. Disassemble all frames, remove glass and lay frames out on newspaper or a drop sheet.**

Due to the mirror finish of the bright colours, use a damp cloth to make sure the surface is clean and free from finger prints.



**3. Spray with 2 light coats of Craig & Rose Artisan™ Bright Effect while turning the Lazy Susan to ensure you get an even coat on all sides of the frame.**

Wait for 24 hours before reassembling the frames to allow the paint to harden. The frames need to be treated with care as Craig & Rose Artisan™ Bright Effect is very sensitive to touch at all times. Avoid touching the sprayed surface to ensure you maintain your bright shine.

### Design Tip

Like all precious metals, all Craig & Rose Artisan™ Bright Effects can easily mark. To keep your finished items looking their best, ensure your hands are clean and free of grease and oil when you handle them.

Available in:



Bright Chrome



Bright Gold



Bright Copper Rose

Note: Craig & Rose Artisan™ Bright Effect cannot be overcoated with a clear coat.



MARBLE EFFECT WHITE  
OVER GLOSS BLACK



## MARBLE EFFECT

Craig & Rose Artisan™ Marble Effect gives you a highly fashionable black or white marble look. This eye catching effect is easily applied to give new life to items around the home.



WIPE



MASK



COVER



SHAKE



PRIME



PROTECT



CLEAR



CLEAN

Ensure you complete these steps to achieve the best results. Refer to the Important Steps page on the inside cover.



**1. Before you start you will require the following items to complete the project:**

- 1 can of Craig & Rose Artisan™ Marble Effect White
- 1 can of Craig & Rose Artisan™ High Performance Enamel Black
- 1 can of Craig & Rose Artisan™ Clear Coat Semi Gloss
- 1 roll of good quality painters tape
- Damp cloth
- Drop sheet or newspaper
- Lazy Susan

### Design Tip

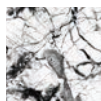
Craig & Rose Artisan™ Marble Effect is applied similar to silly string. When painting your item, ensure you start the spray off the edge so that the spray is even before it hits your item.



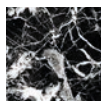
**2. Mask the areas of your tray to stay unpainted with good quality painters tape. Some lacquered timber finishes will need to be primed with one coat of Craig & Rose Artisan™ Undercoat. If you are unsure, it's best to prime with Craig & Rose Artisan™ Undercoat to eliminate any adhesion issues.**

Once undercoat is dry, apply 2 coats of Craig & Rose Artisan™ High Performance Enamel Black following instructions and dry times on the label.

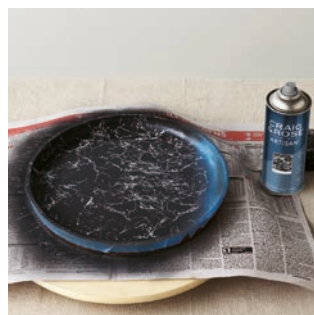
Available in:



Black Marble over White



White Marble over Black



**3. To achieve a realistic marble look, Craig & Rose Artisan™ Marble Effect should be applied with quick hand movements from multiple directions and 25cm or more from the tray. Every marble finish will be unique so don't think too hard about the pattern you are spraying.**

Once the tray has dried, remove tape and spray entire tray with Craig & Rose Artisan™ Clear Coat Semi Gloss.

Note: Craig & Rose Artisan™ Marble Effect must be used over Craig & Rose Artisan colours including Metallics to achieve the effect. Not to be used over Craig & Rose Artisan™ Bright Effect.



GRANITE EFFECT DARK GREY





## GRANITE EFFECT

Craig & Rose Artisan™ Granite Effect is a textured paint designed to reflect the natural tones and texture of granite.



WIPE



MASK



COVER



SHAKE



CLEAR



CLEAN

Ensure you complete these steps to achieve the best results. Refer to the Important Steps page on the inside cover.



**1. Before you start you will require the following items to complete the project:**

- 1 can of Craig & Rose Artisan™ Granite Effect Dark Grey
- 1 roll of good quality painters tape
- Damp cloth
- Drop sheet or newspaper
- Lazy Susan

**2. Place the chord fittings connected to the light in a plastic bag and tape areas not to be painted with painters tape.**

Place light with opening on the Lazy Susan to prevent spray going in the opening.

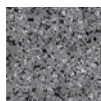
**3. Apply 2 coats of Craig & Rose Artisan™ Granite Effect Dark Grey.**

Hold can upright 15 to 25cm from the surface. Spray with smooth, even strokes parallel to the surface. Apply light mist coats rather than one heavy one. To get an even textured finish, slowly spin the Lazy Susan. Leave the first coat to dry for 1 hour before applying a second coat.

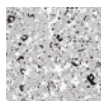
### Design Tip

To achieve depth of colour, spray Craig & Rose Artisan™ Granite Effect over a Craig & Rose Artisan™ High Performance Enamel colour.

Available in:



Granite Dark Grey



Granite Light Grey

Note: Use Craig & Rose Artisan™ Granite Effect over different Craig & Rose Artisan™ colours.



METALLIC RED

METALLIC SILVER

METALLIC ROSE GOLD

METALLIC DARK BLUE

METALLIC GREEN



## METALLIC EFFECT

Craig & Rose Artisan™ Metallic Effect brightens any space with its shimmering effect. Use all colours to achieve a bold look or be selective to compliment any colour scheme.



WIPE



MASK



COVER



SHAKE



CLEAR



CLEAN

Ensure you complete these steps to achieve the best results. Refer to the Important Steps page on the inside cover.



**1. Before you start you will require the following items to complete the project:**

- 1 can of Craig & Rose Artisan™ Undercoat
- 1 can of Craig & Rose Artisan™ High Performance Enamel White
- 1 can of Craig & Rose Artisan™ Metallic Effect in your desired colour(s)
- 1 roll of good quality painters tape
- Damp cloth
- Drop sheet or newspaper
- Lazy Susan

**2. Pull dolls apart and tape overlapping areas with good quality painters tape to ensure that the dolls not fitting back together again. Spread parts out on newspaper with openings facing down.**

Apply 1 coat of Craig & Rose Artisan™ Undercoat to both top and bottom of dolls, followed by 1 coat of Craig & Rose Artisan High Performance Enamel White on the bottom half of all dolls.

**3. Spray the tops of each doll with 2 light coats of Craig & Rose Artisan™ Metallic Effect while turning the Lazy Susan to ensure you get an even coat on all sides.** Hold can upright 15 to 25cm from the surface. Spray with smooth, even strokes to avoid any drips.

### Design Tip

Place small items on an aerosol lid to raise them off the table or a Lazy Susan so that you can paint right to the bottom.

Available in:



Gold



Rose Gold



Silver



Dark Blue



Green



Red

DIAMOND SILVER  
OVER GLOSS HOG BRISTLE







## DIAMOND EFFECT

Craig & Rose Artisan™ Diamond Effect can be sprayed over any Craig & Rose Artisan™ colour to give a brilliant glittery finish. This sparkle effect is perfect for any object requiring a little more glitz!



SAND



WIPE



COVER



SHAKE



CLEAR



CLEAN

Ensure you complete these steps to achieve the best results. Refer to the Important Steps page on the inside cover.



**1. Before you start you will require the following items to complete the project:**

- 1 can of Craig & Rose Artisan™ High Performance Enamel Hog Bristle.
- 1 can of Craig & Rose Artisan™ Diamond Silver Effect
- Damp cloth
- Drop sheet or newspaper
- Lazy Susan
- Sand paper



**2. Apply 2 coats of Craig & Rose Artisan™ High Performance Enamel Hog Bristle.**

Hold can upright 15 to 25cm from the surface. Use the Lazy Susan by turning slowly as you spray with smooth, even strokes parallel to the surface. Apply one or more light coats, as opposed to one heavy coat.

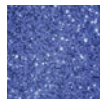


**3. Apply one or more coats of Craig & Rose Artisan™ Diamond Silver Effect to achieve the desired glitter density.**

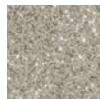
### Design Tip

Due to the sparkling nature of Craig & Rose Artisan™ Diamond Effect, make sure your surface is as smooth as possible. Sand with extra fine P400-P600 sandpaper if required.

Available in:



Blue



Silver

Note: Use Craig & Rose Artisan™ Diamond Effect over different Craig & Rose Artisan™ colours.



FROSTED GLASS EFFECT



## FROSTED GLASS EFFECT

Craig & Rose Artisan™ Frosted Glass is a versatile effect that can update the appearance of glass with ease. This durable coating delivers a semi opaque, matte finish that when sprayed on part of an object offers dimension. Also ideal for glass windows where privacy is needed.



SAND



WIPE



COVER



SHAKE



CLEAR



CLEAN

Ensure you complete these steps to achieve the best results. Refer to the Important Steps page on the inside cover.



**1. Before you start you will require the following items to complete the project:**

- 1 can of Craig & Rose Artisan™ Artisan Glass Frosting Effect
- 1 roll of good quality painters tape
- Damp cloth
- Drop sheet or newspaper
- Lazy Susan



**2. Tape areas of vase that you do not want painted. Wipe down vase with a glass cleaner to remove any dust or fingerprints.**



**3. Use the Lazy Susan by turning slowly as you spray. Apply 2 or more coats of Craig & Rose Artisan™ Glass Frosting Effect to achieve desired look.**

### Design Tip

Use kitchen plastic wrap to cover large areas that you do not want to spray.

Available in:



Frosted



GLOSS HOG BRISTLE





## OMBRE EFFECT

Craig & Rose Artisan™ doesn't have to be used to spray the entire item. Why not try spraying part of an item to achieve this very on trend Ombre effect.



WIPE



COVER



SHAKE



CLEAR



CLEAN

Ensure you complete these steps to achieve the best results. Refer to the Important Steps page on the inside cover.



**1. Before you start you will require the following items to complete the project:**

- 1 can of Craig & Rose Artisan™ High Performance Enamel Hog Bristle
- Damp cloth
- Drop sheet or newspaper
- Lazy Susan



**2. Place item on Lazy Susan. Whilst slowly spinning the basket on the lazy Susan, start spraying at approximately half of the way up the basket keeping your hand steady.**

This should be a lighter coat to achieve the ombre effect.



**3. Using light even strokes and rotating the Lazy Susan, fill in the area from your top line to the bottom of the basket.**

Due to the texture of a basket, 2 to 3 coats are required to achieve an opaque finish. Remember to leave the top line as a light coat.

### Design Tip

Place basket on a Lazy Susan and rotate while keeping your spraying hand still to achieve an even line all around the basket.

Colour used:



Hog Bristle



Sicilian  
Olives

tomatoes

Brie

Cheddar

MAGNETIC CHALKBOARD



## MAGNETIC CHALKBOARD EFFECT

Craig & Rose Artisan™ Magnetic Chalkboard is an easy to use specialty paint that can turn ordinary items into a fun interactive feature. Suitable for entertaining, office spaces or children's play areas.



WIPE



MASK



COVER



SHAKE



CLEAR



CLEAN

Ensure you complete these steps to achieve the best results. Refer to the Important Steps page on the inside cover.



**1. Before you start you will require the following items to complete the project:**

- 1 can of Craig & Rose Artisan™ Magnetic Chalk Board
- 1 roll of good quality painters tape
- Damp cloth
- Drop sheet or newspaper



**2. Tape areas of serving board that you do not want painted. Wipe down board with a damp cloth to remove any dust or fingerprints.**



**3. Apply 2 even coats of Craig & Rose Artisan™ Magnetic Chalkboard and allow to dry before removing tape.**

### Design Tip

As the name suggests, Craig & Rose Artisan™ Magnetic Chalkboard has magnetic properties which means it can also be used for noticeboards or kids play areas.

Available in:



Black

Note: Craig & Rose Artisan™ Magnetic Chalkboard should be cleaned with a damp cloth. Some foods may mark the surface so we recommend using bowls when serving.



GLOSS BRIGHT DELIGHT



GLOSS GO GO BLUE



GLOSS HOG BRISTLE



GLOSS DANDELION YELLOW



GLOSS HYSSOP







## OUTDOOR PROJECTS

Craig & Rose Artisan™ High Performance Enamel is durable enough to be used both inside and outside the home and is the perfect way to personalise your next DIY project.



WIPE



COVER



SHAKE



CLEAR



CLEAN

Ensure you complete these steps to achieve the best results. Refer to the Important Steps page on the inside cover.



**1. Before you start you will require the following items to complete the project:**

- 1 can of Craig & Rose Artisan™ High Performance Enamel in your desired colour(s)
- Damp cloth
- Drop sheet or newspaper
- Lazy Susan



**2. Lay rungs out on newspaper and spray with 2 coats of desired Craig & Rose Artisan™ High Performance Enamel colour(s). Spray 15 to 25cm from the surface, with smooth, even strokes parallel to the surface. Make sure the sides are dry before flipping them over to paint the back.**



**3. Place metal planters on newspaper and spray with 2 coats of desired Craig & Rose Artisan™ High Performance Enamel colours and allow to dry before assembling planters with ladder.**

### Design Tip

For the perfect result, spray with smooth, even strokes. Craig & Rose Artisan™ High Performance Enamels should be applied in one or more light coats, rather than one heavy coat.

Available in:



Bright Delight



Hog Bristle



Go Go Blue



Dandelion Yellow



Hyssop



GRANITE EFFECT

CRACKLE EFFECT BLACK OVER GLOSS WHITE

GLOSS HOG BRISTLE

GLOSS BRIGHT DELIGHT

GLOSS ANTIQUE WHITE

# MORE INSPIRATION



For more inspiration visit us [www.craig&rose.com](http://www.craig&rose.com)

## Get in touch

You can find a full list of our paint stockists on our website. If you don't find the colour you want on shelf, simply order it through the stockist or directly from us. For more inspiration and design tips join us on our social media channels.

---

[www.craigandrose.com](http://www.craigandrose.com)



Colours shown are as close as possible to actual paint colours and design finishes can vary depending on the application. Due to limitations of your display screen and the printing process, photographic and printed images and swatches may not represent true colour. Colours and images displayed are a guide only. Always confirm your colour choice with Craig & Rose 1829 sample pots. Craig & Rose is a registered trade mark and Artisan and Metallic, Stone, Copper, Copper Patina, Concrete, Gold, Pearl, Stainless Steel are trade marks of Craig & Rose Limited, Halbeath Industrial Estate, Dunfermline, KY11 7EG United Kingdom.