



# NEWSTAMP LIGHTING

Corporation

Established 1939



*Presenting decorative lighting for*

*An Elegant Touch*



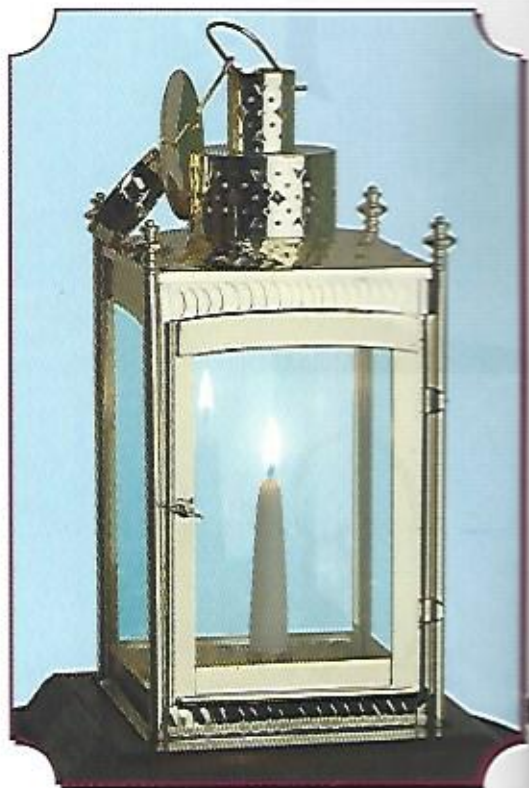


RESTORATIONS, REPRODUCTIONS, AND CUSTOM LIGHTING  
TO YOUR SPECIFICATIONS.

THE PAUL REVERE OLD NORTH CHURCH LANTERN



A Commemorative of the American Revolution approved by the Bicentennial Commission of the US Congress in 1976. This reproduction is made by Newstamp Lighting Company. The original is on display at the Antiquarian Society Museum in Concord, MA. Made from Solid Brass, not electrified. Size: 5 1/2" square x 12 1/2" high. Colonial Antique or Polished Brass finish. Mahogany finish hardwood plinth optional. Electrified Model available.

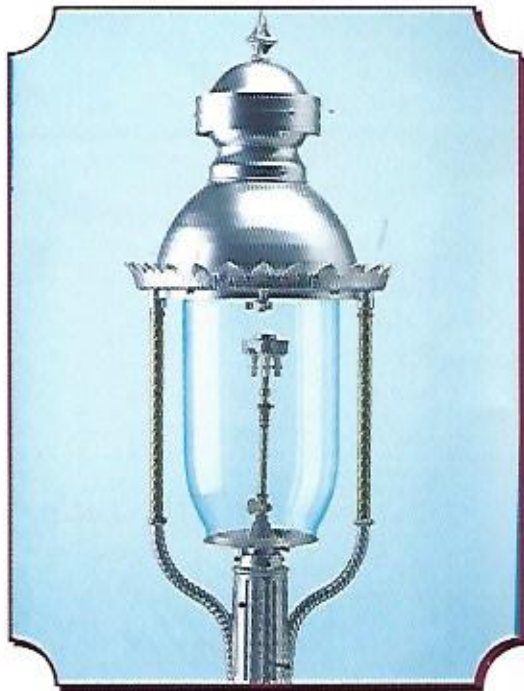


MALDEN PUBLIC LIBRARY



National Historic Trust Register Reproduction of H. H. Richardson Chandelier  
40" Diameter, 45" high. Made from Solid Brass with Antique Brass finish.

CITY OF BOSTON



Authentic Reproduction Gas Lantern, 1902. Cast Iron, Aluminum & Glass. Silver finish. Shown as Natural Gas. Available Electrified.  
46" high x 18" Diameter



# NEW BEDFORD ONION LANTERNS

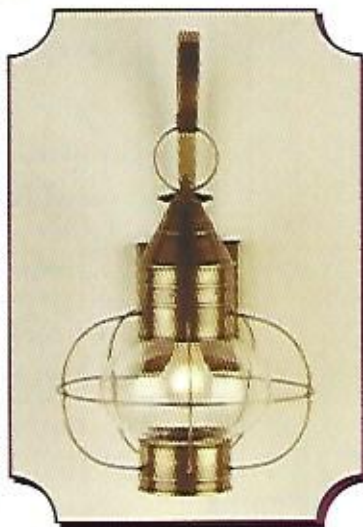
ONION LANTERNS WITH HAND BLOWN GLASS GLOW WITH WARMTH AND WELCOME  
 AVAILABLE IN ANTIQUE BRASS, ANTIQUE COPPER, OLD BRASS, PEWTER, BLACK OR VERDE FINISH  
 MADE FROM SOLID BRASS & SOLID COPPER



620B94 No Scroll Antique Brass



621B94 No Scroll Old Brass



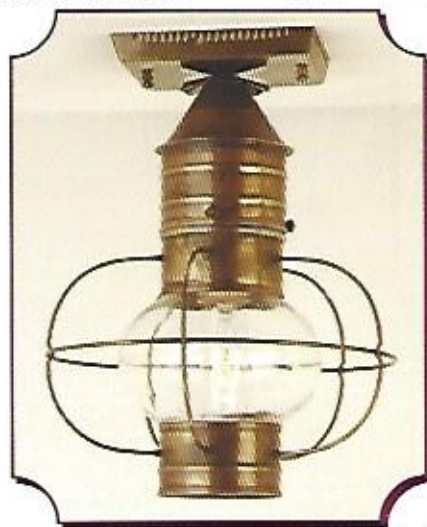
621B94 Antique Brass



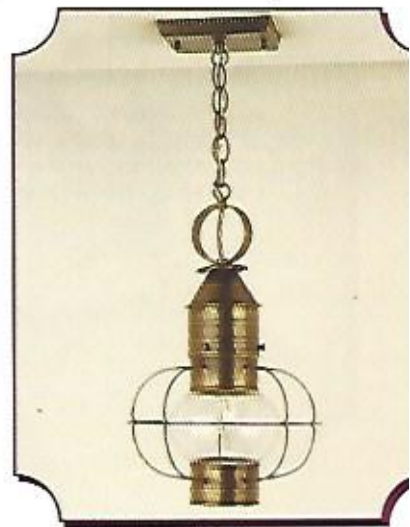
620BN Antique Brass



620B Verde



620C Antique Copper  
 Also Available: 620CN & 621C



620H Antique Brass

- |                   |   |
|-------------------|---|
| 620B 94 No Scroll | 9" wide, 16" high, 6" globe, extends 10-1/4", 7" from mounting rod to top of loop, 1 standard base bulb, open bottom. |
| 621B 94 No Scroll | 10" wide, 17" high, 8" globe, extends 12", 9" from mounting rod to top of loop, 1 standard base bulb, open bottom.    |
| 621B 94           | 10" wide, 21" high, 8" globe, extends 12", 14" from mounting rod to top of scroll, 1 standard base bulb, open bottom. |
| 620BN             | 6" wide, 18" high, 6" globe, extends 8". 12" from mounting rod to top of scroll, 1 standard base bulb, open bottom.   |
| 620B              | 8" wide, 20" high, 6" globe, extends 10". 11" from mounting rod to top of scroll, 1 standard base bulb.               |
| 620C              | 8" wide, 11-1/2" high, 6" globe, 1 standard base bulb, open bottom.   |
| 620CN             | 6" wide, 11-1/2" high, 6" globe, 1 standard base bulb, open bottom.   |
| 620H              | 8" wide, 13-1/2" high, 6" globe, 1 standard base bulb, open bottom.   |



# NEW BEDFORD ONION LANTERNS

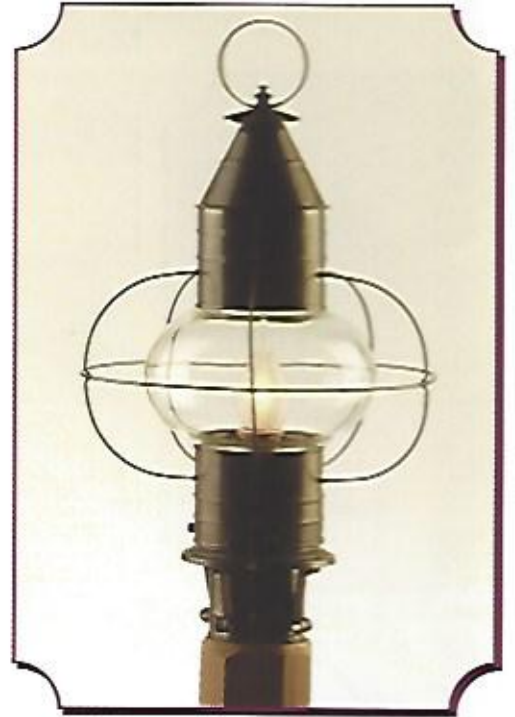


621B Antique Copper  
10" wide, 22" high, 8" globe, extends 13",  
12" from mounting rod to top of fixture.  
1 standard base bulb.

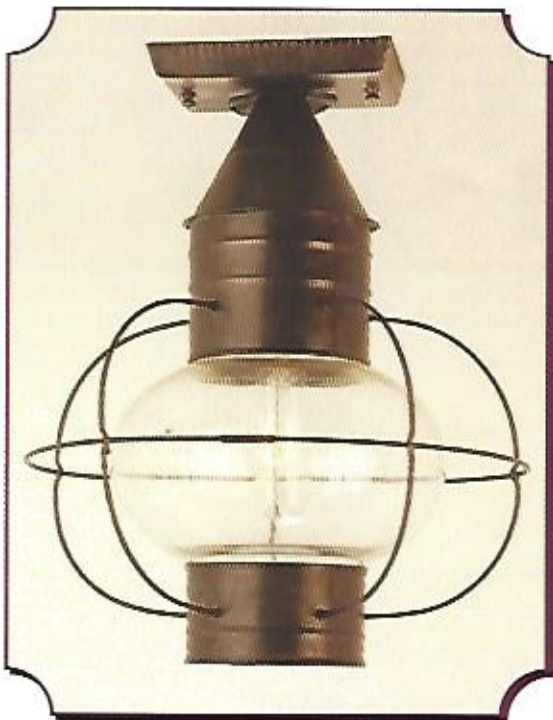
## ONION LANTERNS.....

Tomorrow's heirlooms  
created for your home  
today.

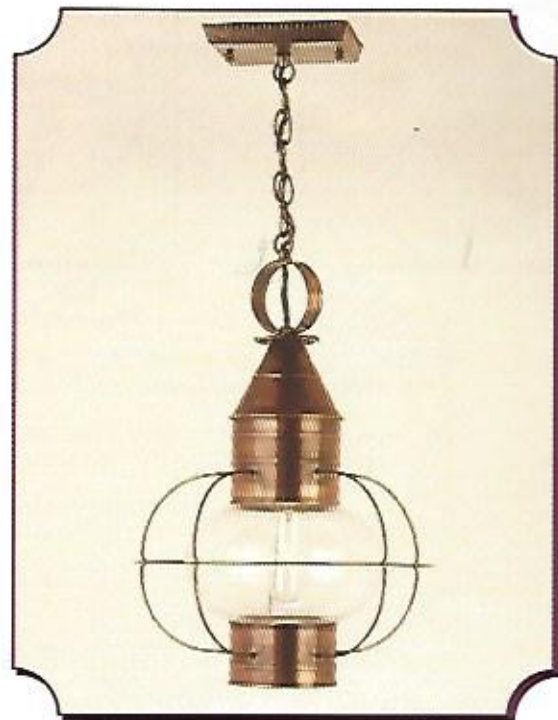
Impeccably crafted,  
expertly constructed  
reproductions  
are valuable additions  
to every home.



621P Old Brass  
10" wide, 19" high, 8" globe.  
1 standard bulb.



621C Old Brass  
10" wide, 11-1/2" high, 8" globe.  
1 standard base bulb.  
Open bottom.



621H Antique Copper  
10" wide, 15" high, 8" globe.  
1 standard base bulb.  
Open bottom.



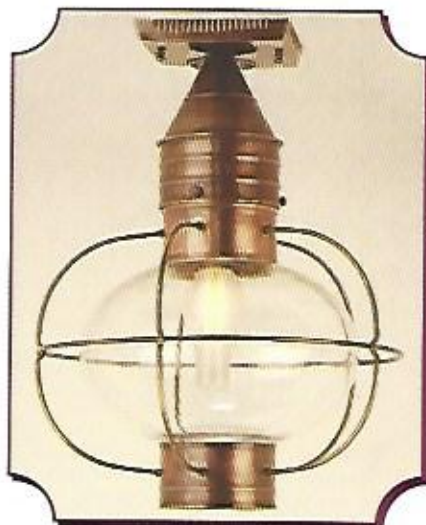


# NEW BEDFORD ONION LANTERNS

ONION LANTERNS THAT ADD GRACE TO EVERY HOME



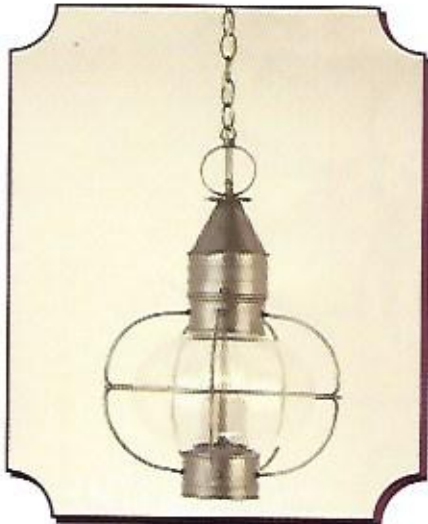
622CL Old Brass



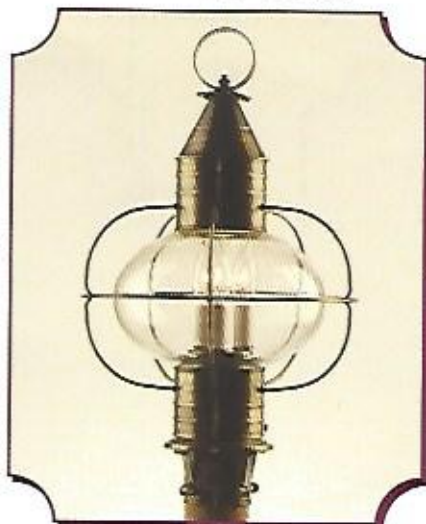
622C Antique Copper



622CNC Old Brass



622HC Pewter  
Other Model 622H



622PC Antique Brass  
Other Model 622P



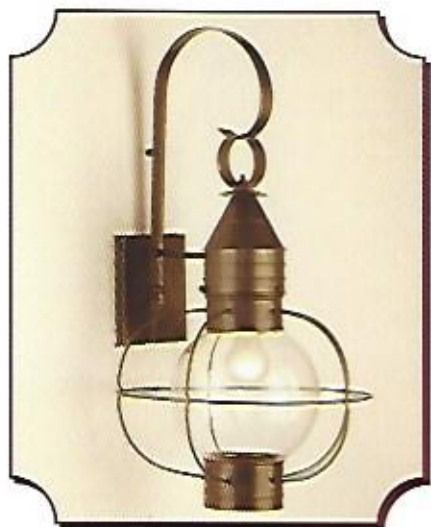
622BC Antique Brass  
Other model 622B

- 622B 12" wide, 23" high 10" globe, extends 15", 14" from mounting rod to top of fixture. 1 standard base bulb
- 622BC 12" wide, 23" high 10" globe, extends 15", 14" from mounting rod to top of fixture. 3 candle base bulbs
- 622C 12" wide, 16" high, 10" globe. 1 standard base bulb, open bottom
- 622CL 12" wide, 16" high, 10" globe. 3 candle base bulbs, open bottom
- 622CNC 10" wide, 16" high, 10" globe. 3 candle base bulbs
- 622H 12" wide, 19" high, 10" globe. 1 standard base bulb, open bottom
- 622HC 12" wide, 19" high, 10" globe. 3 candle base bulbs
- 622HNC 10" wide, 15" high, 10" globe. 3 candle base bulbs
- 622P 12" wide, 20" high, 10" globe. 1 standard base bulb
- 622PC 12" wide, 20" high, 10" globe. 3 candle base bulbs



# NEW BEDFORD ONION LANTERNS

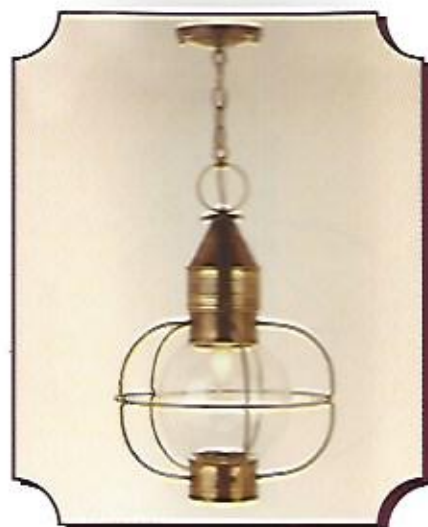
THE CRAFTSMANSHIP OF THE PAST HAS BEEN CAPTURED BY THESE MAGNIFICENT REPRODUCTIONS.



625B Old Brass



625PC Antique Brass  
Other model 625P  
626P  
626PC



625H Antique Brass



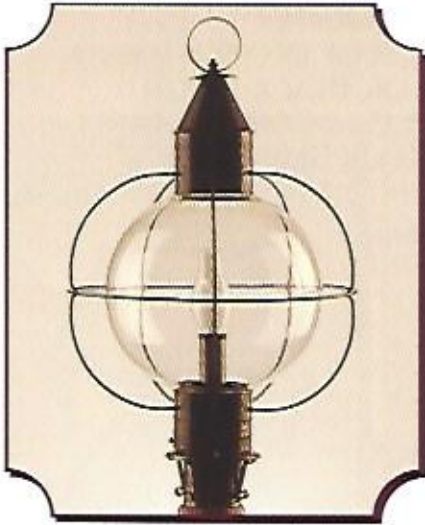
626H Pewter  
Other model 626HC



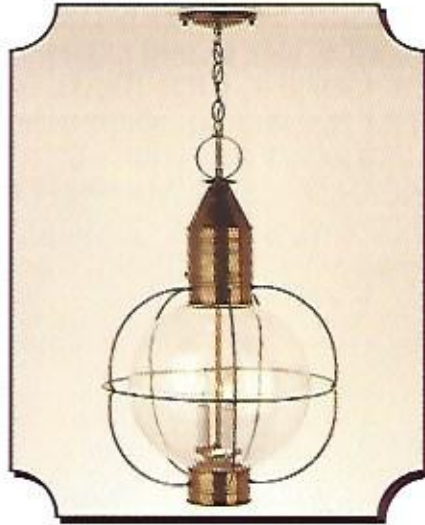
626BC Antique Copper  
Other model 626B

- |       |  |
|-------|--|
| 625B  | 12" wide, 25" high, 8" globe, extends 15", 14" from mounting rod to top of scroll. 1 standard base bulb  |
| 625H  | 12" wide, 18" high, 8" globe. 1 standard base bulb, open bottom.   |
| 625P  | 12" wide, 21" high, 8" globe. 1 standard base bulb   |
| 625PC | 12" wide, 21" high, 8" globe. 3 candle base bulbs  |
| 626B  | 14" wide, 27" high, 10" globe, extends 15", 14" from mounting rod to top of scroll. 1 standard base bulb |
| 626BC | 14" wide, 27" high, 10" globe, extends 15", 14" from mounting rod to top of scroll. 3 candle base bulbs  |
| 626H  | 14" wide, 18" high, 10" globe. 1 standard base bulb, open bottom   |
| 626HC | 14" wide, 18" high, 10" globe. 3 candle base bulbs, open bottom  |
| 626P  | 14" wide, 23" high, 10" globe. 1 standard base bulb, open bottom   |
| 626PC | 14" wide, 23" high, 10" globe. 3 candle base bulbs   |

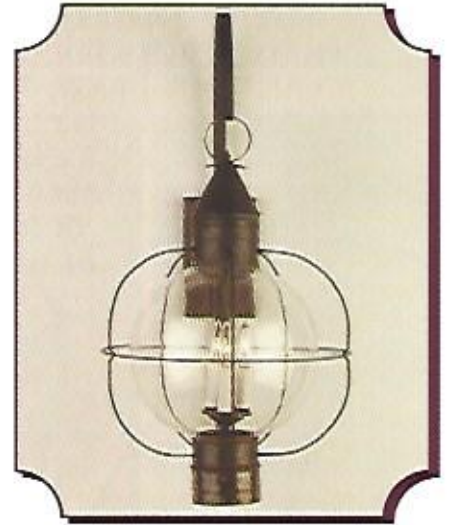
# NEW BEDFORD ONION LANTERNS



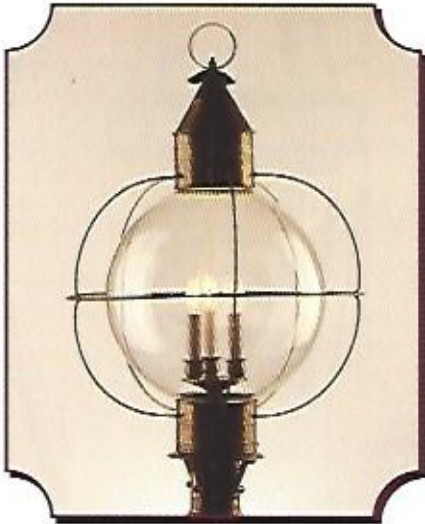
627P Old Brass  
Other model 627PC



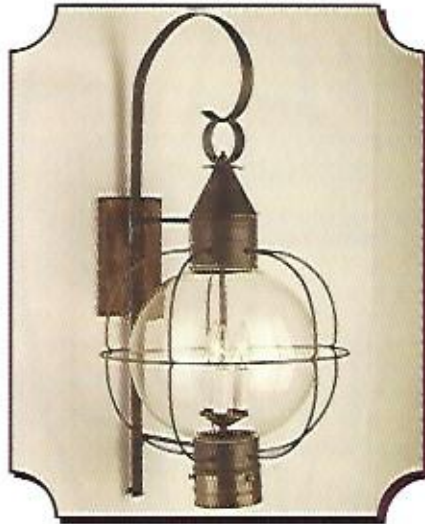
627HC Antique Copper  
Other Model 627H



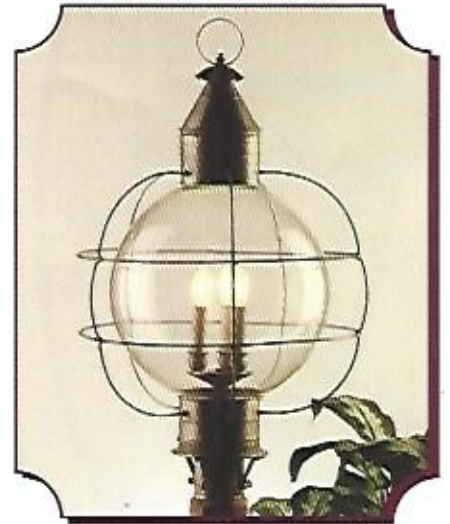
627BC Old Brass  
Other Model 627B



628PC Antique Brass  
Other model 628P



628BC Antique Brass  
Other Model 628B



629PC Antique Brass  
Other Model 629P, 629H, 629HC,  
629B, 629BC

627B	15" wide, 31" high, 12" globe, 16" from mounting rod to top of scroll. 1 standard base bulb
627BC	15" wide, 31" high, 12" globe, 16" from mounting rod to top of scroll. 3 candle base bulbs
627H	15" wide, 24" high, 12" globe. 1 standard base bulb, open bottom
627HC	15" wide, 24" high, 12" globe. 3 candle base bulbs, open bottom
627P	15" wide, 26" high, 12" globe. 1 standard base bulb
627PC	15" wide, 26" high, 12" globe. 3 candle base bulbs
628B	18" wide, 29" high, 14" globe, 1 standard base bulb
628BC	18" wide, 29" high, 14" globe, 3 candle base bulbs
628P	18" wide, 29" high, 14" globe. 1 standard base bulb
628PC	18" wide, 29" high, 14" globe. 3 candle base bulbs
629H	18" wide, 25" high, 14" globe. 1 standard base bulb, open bottom
629HC	18" wide, 25" high, 14" globe. 3 candle base bulbs, open bottom
629P	18" wide, 32" high, 14" globe, 1 standard base bulb
629PC	18" wide, 32" high, 14" globe, 3 candle base bulbs



# BEACON HILL SERIES

TRADITIONAL LANTERNS IN SOLID BRASS & SOLID COPPER  
 THAT CAPTURE THE SPLENDOR OF THE COBBLESTONE STREETS OF OLD BOSTON.  
 ANTIQUE BRASS, ANTIQUE COPPER, OLD BRASS, VERDE OR BLACK FINISH  
 STANDARD GLASS IS CLEAR WITH HAMMERED AMBER SEEDY GLASS IN CENTER PANEL.  
 GLASS OPTIONS ARE: OPAL GLASS, POLYCARBONATE LENSES OR SEEDY GLASS.  
 LIGHT SOURCES AVAILABLE ARE INCANDESCENT, METAL HALIDE, HIGH PRESSURE SODIUM,  
 & MERCURY VAPOR WITH GLASS REFRACTOR.  
 BLACK IRON CRADLE OPTIONAL FOR 237P ONLY



237P Small Antique Copper  
 29" high, 16-1/2" wide, 3" post collar  
 1 standard base bulb  
 Shown with Opal top glass,  
 Frosted chimney



238P Large Antique Brass  
 45" high, 15-1/4" wide, 3" post collar  
 1 standard base bulb, Frosted chimney



239P Medium Antique Brass  
 38" high, 13" wide, 3" post collar  
 1 standard base bulb  
 Frosted chimney

ALSO AVAILABLE FOR NATURAL GAS

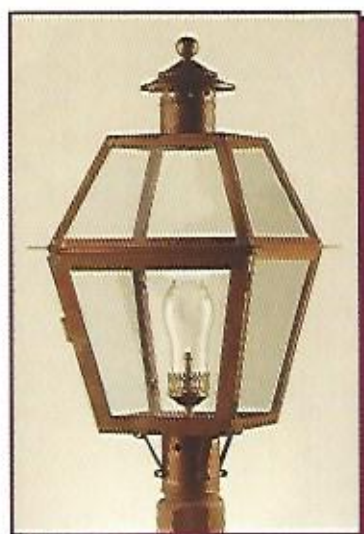




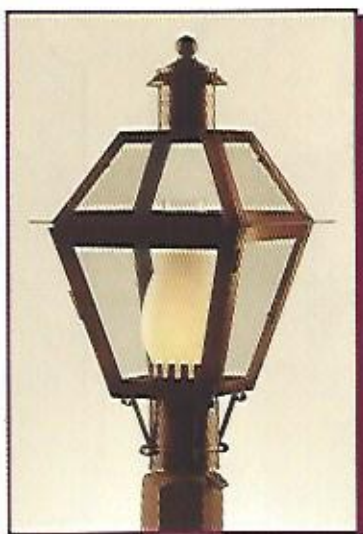


# BOSTON POST ROAD SERIES

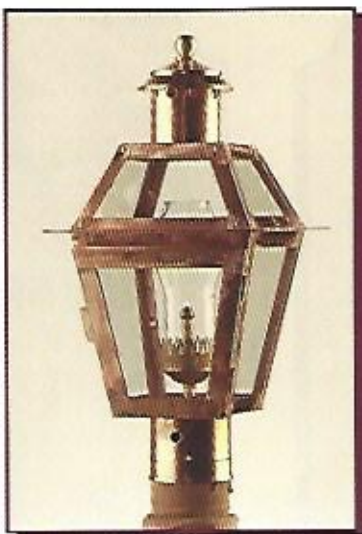
TRADITIONAL LANTERNS THAT ARE ALWAYS IN STYLE  
ANTIQUE BRASS, ANTIQUE COPPER, BLACK, OLD BRASS, VERDE OR PEWTER FINISH



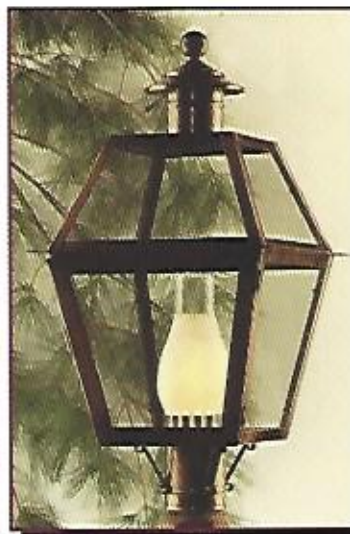
1P Natural Copper - Large  
For Natural Gas



2P Antique Copper - Medium



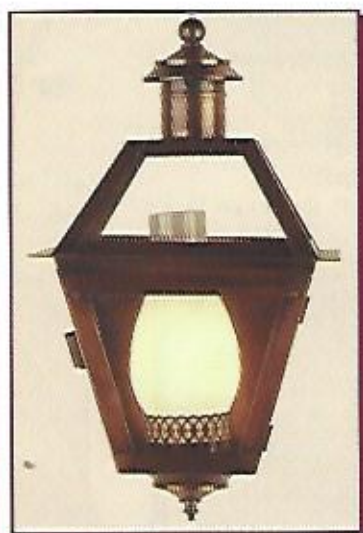
6P Natural Copper - Small  
For Natural Gas



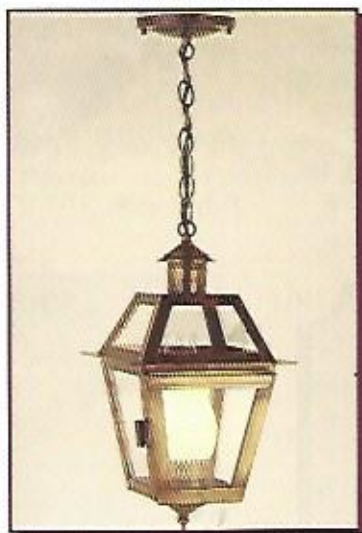
1P Antique Copper - Large



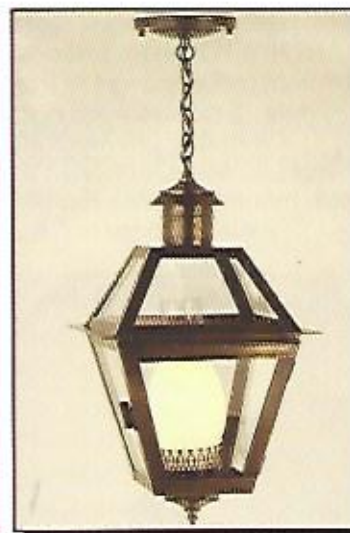
6P Black - Small



2B Antique Copper - Medium  
Other size - 6B - Small



6H Antique Brass - Small



2H Antique Brass - Medium  
Other Size: 1H - Large

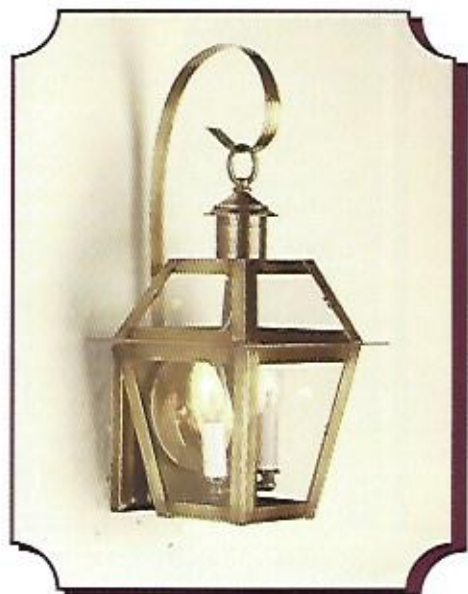
- |           |  |
|-----------|--|
| 1H Large  | 24" high, 13" wide, frosted chimney, 1 standard base bulb  |
| 1P Large  | 25" high, 13" wide, frosted chimney, 1 standard base bulb  |
| 2B Medium | 19" high, 10-3/4" wide, frosted chimney, extends 12",<br>12" from mounting rod to top of fixture, 1 standard base bulb       |
| 2H Medium | 18" high, 10-1/2" wide, frosted chimney, 1 standard base bulb  |
| 2P Medium | 19" high, 10-1/2" wide, frosted chimney, 1 standard base bulb  |
| 6B Small  | 15" high, 8-1/2" wide, frosted chimney, extends 9-1/2",<br>10-1/2" from mounting rod to top of fixture, 1 standard base bulb |
| 6H Small  | 16" high, 8-1/2" wide, frosted chimney, 1 standard base bulb   |
| 6P Small  | 17" high, 8-1/2" wide, frosted chimney, 1 standard base bulb   |





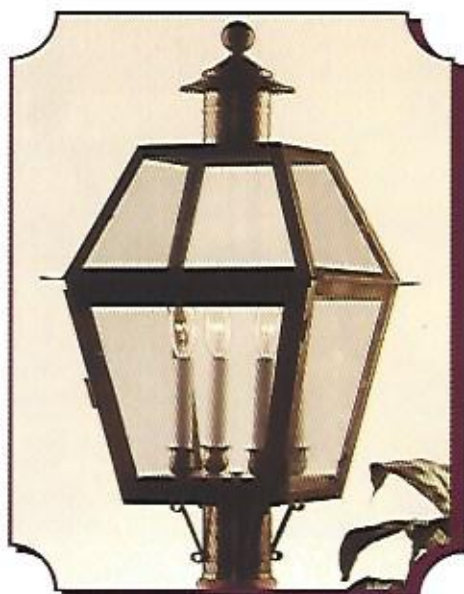
# BOSTON POST ROAD SERIES

TRADITIONAL LANTERNS IN SOLID BRASS & SOLID COPPER  
THAT CAPTURE THE SPLENDOR OF THE COBBLESTONE STREETS OF OLD BOSTON



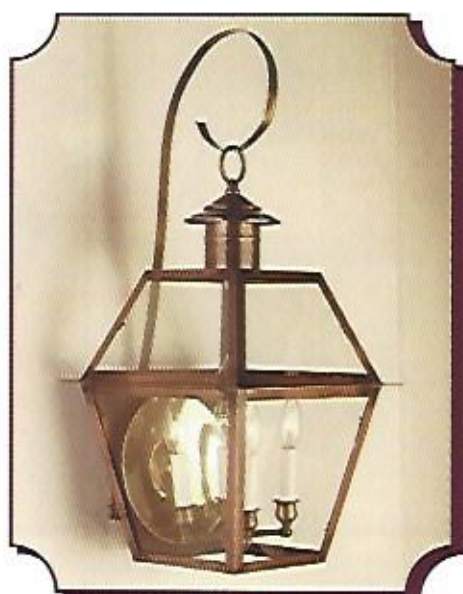
6BS Small Antique Brass  
20" High, 8-1/2" wide, extends 9-1/2",  
14" from mounting rod to top of fixture. 2 candle base bulbs.

Other size: 2BS Medium  
22" High, 10" wide, extends 11-1/2", 18"  
from mounting rod to top of fixture.  
2 candle base bulbs.

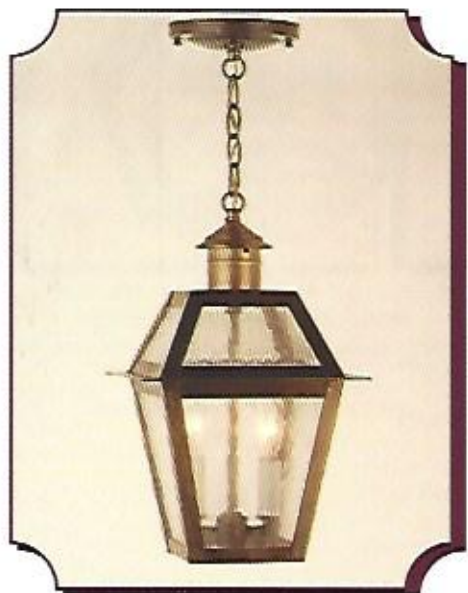


1PC Large Antique Brass  
25" High, 13" wide, 4 candle base bulbs.

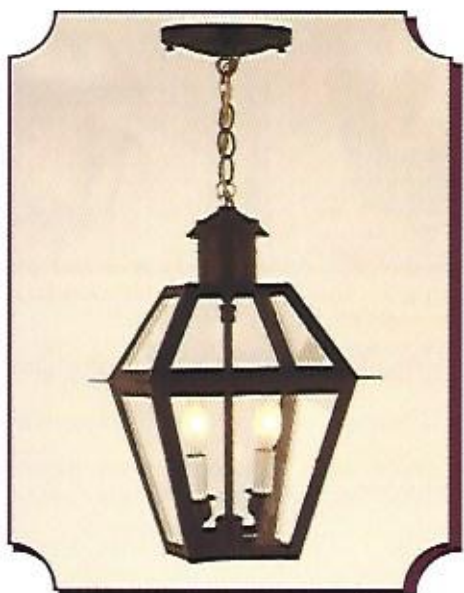
Other sizes:  
2PC Medium  
10-1/2" wide, 21" high, 2 candle bulbs.  
6PC Small  
8-1/2" wide, 17-1/2" high, 2 candle bulbs.



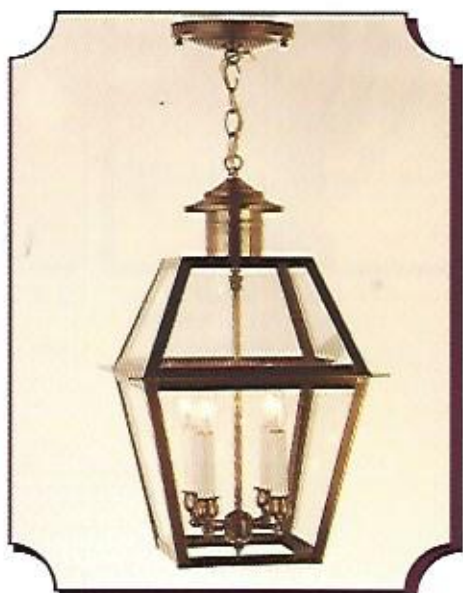
1BS Large Antique Copper  
29" High, 13" wide, extends 14",  
24" from mounting rod to top of fixture. 4 candle base bulbs.



6HC Small Antique Brass  
Shown with optional clear seeded glass,  
16" high, 8-1/2" wide, 2 candle bulbs



2HC Medium Black  
18 high, 10-1/2" wide  
2 candle base bulbs.



1HC Large Antique Brass  
24" high, 13" wide  
4 candle base bulbs





# SUDBURY SERIES

LANTERNS THAT ARE SUPERBLY HAND CRAFTED FROM SOLID COPPER & SOLID BRASS  
ANTIQUÉ BRASS, OLD BRASS, ANTIQUÉ COPPER, BLACK, VERDE OR PEWTER FINISH



710B Large Antique Copper  
Other sizes: 711B Medium  
712B Small



710P Large Pewter

710B 10-1/2" wide, 24" high,  
extends 11", 17" from  
mounting rod to top of  
fixture, 3 candle base bulbs

710H 10-1/2" wide, 23-1/2" high,  
24" chain, 4 candle base bulb

710P 10-1/2" wide, 27" high,  
4 candle base bulbs

711B 8" wide, 17" high,  
extends 8-1/2", 12" from  
mounting rod to top of fixture,  
2 candle base bulbs



711H Medium Pewter  
Other sizes: 712H Small  
710H Large



711P Medium Antique Copper

711H 8" wide, 18" high,  
3 candle base bulbs

711P 8" wide, 21" high,  
3 candle base bulbs

712B 6" wide, 13-1/2" high,  
extends 6-1/2", 8" from  
mounting rod to top of  
fixture, 1 candle base bulb

712H 6" wide, 13" high,  
2 candle base bulbs



# MARBLEHEAD SERIES

HANDMADE REPRODUCTIONS IN SOLID BRASS & SOLID COPPER THAT CAPTURE THE WELL-GROOMED TASTE, THE PRECIOUS FLAVOR UNIQUE TO NEW ENGLAND'S QUAIN OLD TOWNS.  
 ANTIQUE BRASS, OLD BRASS, ANTIQUE COPPER, VERDE, PEWTER OR BLACK FINISH



606B Small Antique Brass  
 15-1/2" high, 6-1/4" wide,  
 extends 5", 11" from  
 mounting rod to top of scroll  
 1 candle base bulb



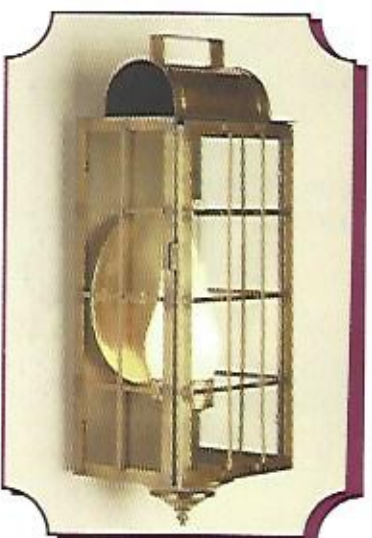
601B Medium Antique Brass  
 19-1/2" high, 7" wide,  
 extends 6", 14" from  
 mounting rod to top of scroll  
 2 candle base bulbs



601BG Medium Antique Brass  
 17" high, 7" wide, extends 6",  
 14" from mounting rod to top  
 of scroll  
 1 standard base bulb  
 Also available:  
 606BG Small



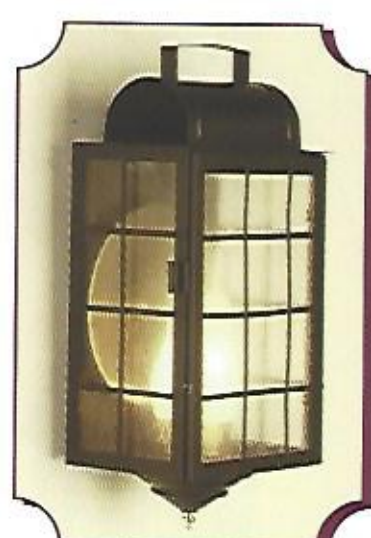
608B Large Black  
 26" high, 9-1/2" wide,  
 extends 8", 17" from  
 mounting rod to top of scroll  
 3 candle base bulbs



408B Large Antique Brass  
 24" high, 10" wide,  
 extends 8", 11" from mounting  
 rod to top of fixture,  
 frosted chimney  
 1 standard base bulb



610B Black  
 16" high, 16" wide,  
 extends 7", 12" from  
 mounting rod to top of scroll  
 2 standard base bulbs



409B Medium Black  
 19" high, 10" wide,  
 10" from mounting rod  
 to top of fixture  
 frosted chimney  
 1 standard base bulb





# DESIGNS THAT RECALL THE BEAUTY OF COLONIAL TIMES

ADDITIONAL MARBLEHEAD SERIES LANTERNS FOR  
POST, WALL AND CEILING MOUNT

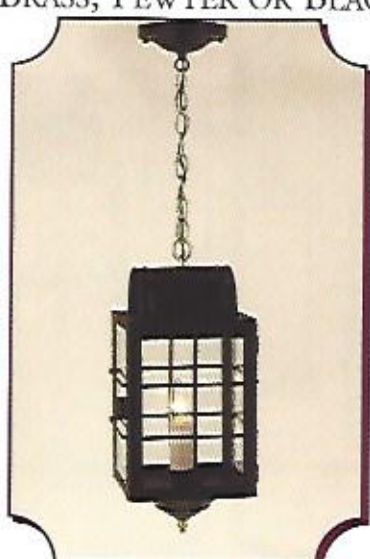
ANTIQUÉ BRASS, ANTIQUÉ COPPER, BRASS, PEWTER OR BLACK FINISH



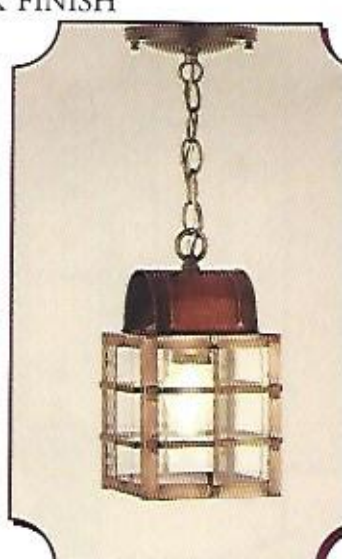
413HC Antique Copper  
Other Size: 414HC



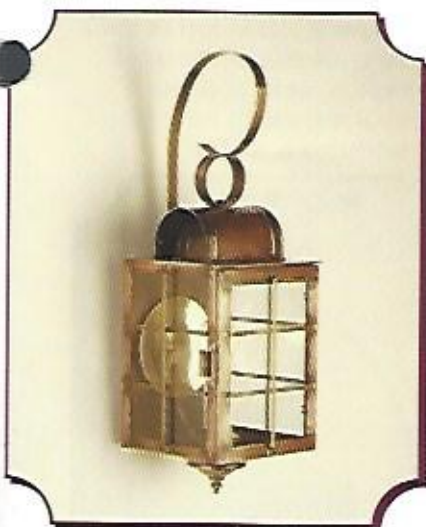
413HG Antique Brass  
Other Sizes: 414HG, 415HG



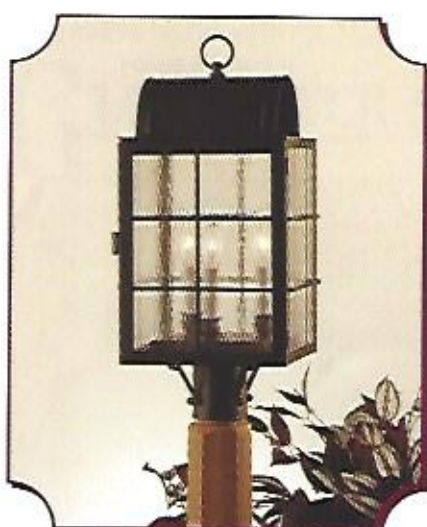
413H Black  
Other Size: 414H



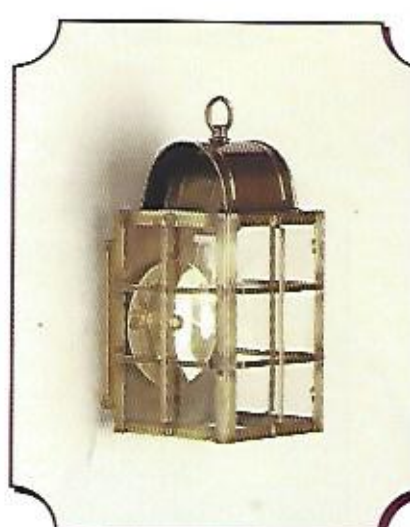
415HG Antique Copper  
Other Sizes: 413HG, 414HG



413BS Antique Copper  
Other Size: 414BS, 415BS



417P Black  
Other Size: 413P



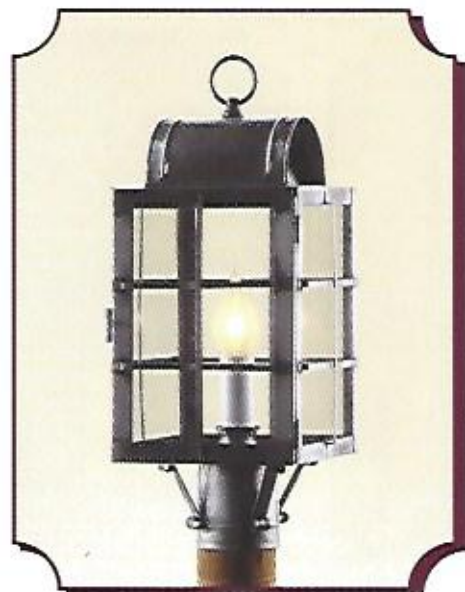
414BG Antique Brass  
Other Sizes: 415BG, 413BG

- 413BG .....7-1/4" wide, 14" high extends 8-1/2", 10" from mounting rod to top of fixture. 1 standard base bulb.  
 413BS .....7-1/4" wide, 24" high extends 8-1/2", 16" from mounting rod to top of fixture. 1 standard base bulb.  
 413H .....8-1/2" wide, 17" high 18" chain. 1 standard base bulb.  
 413HC .....8" wide, 14-1/2" high 18" chain. 3 candle base bulbs.  
 413HG .....8" wide, 14-1/2" high 18" chain. 1 standard base bulb.  
 413P .....7" wide, 18" high. 1 standard base bulb.  
 414BG .....5-1/2" wide, 13" high extends 6", 8" from mounting rod to top of frame, 1 standard base bulb  
 414BS .....5-1/2" wide, 19" high extends 6-1/4", 14" from mounting rod to top of frame, 1 standard base bulb  
 414HC .....5-1/2" wide, 11" high. 2 candle base bulbs.  
 415BS .....6-1/2" wide, 10" high extends 5", 14" from mounting rod to top of scroll, 1 candle bulb  
 415HG .....6-1/2" wide, 10" high 5" from mounting rod to top of scroll. 1 candle base bulb.  
 417P .....9 1/2" wide, 22" high, 3 candle base bulbs.

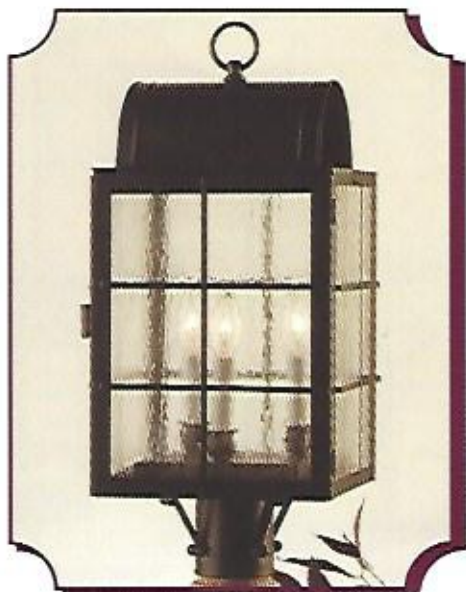


# SCITUATE SERIES

DESIGNS THAT RECALL THE BEAUTY OF COLONIAL TIMES  
SOLID BRASS OR SOLID COPPER LANTERNS FOR POST, WALL, OR CEILING MOUNT.  
ANTIQUÉ BRASS, ANTIQUÉ COPPER, OLD BRASS, PEWTER, BLACK OR VERDE FINISH



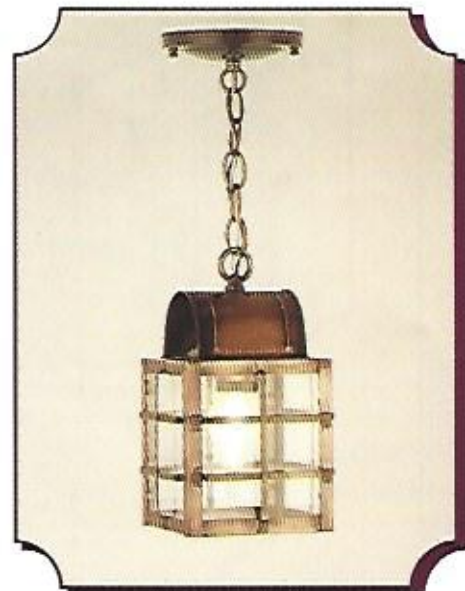
413P Medium Pewter  
18" high, 7" wide  
1 standard base bulb



417P Large Black w/Optional  
Clear Seedy Glass  
22" high, 9-1/2" wide  
3 candle bulbs



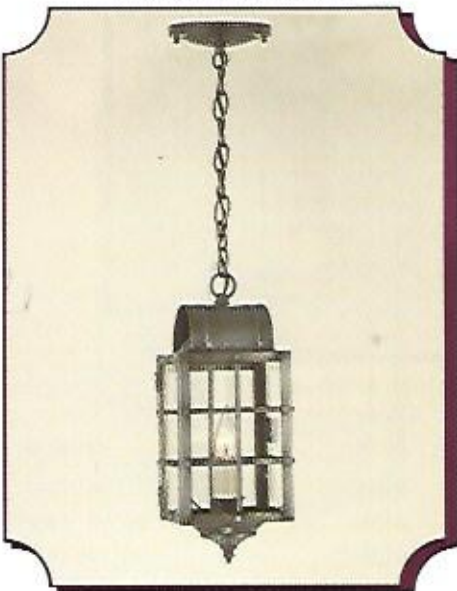
413BS Medium Antique Copper  
24" high, 7" wide, extends 8"  
16" from mounting rod to top of scroll  
Other size available: 414BS Small  
18" high, 6" wide, 6" deep  
11" from mounting rod to top of scroll  
1 standard base bulb



415HG Small Antique Copper  
10-1/2" high, 6" wide  
1 standard base bulb  
Other sizes available:  
413HG Large  
15" high, 8" wide 1 standard base bulb  
414HG Medium  
11" high, 6" wide  
1 standard base bulb



414BG Small Antique Brass  
12-1/2" high, 5-1/2" wide, extends 6"  
8" from mounting rod to top of fixture  
Other size available  
413BG Medium  
15" high, 8" wide, extends 8"  
10" from mounting rod to top of fixture  
1 candle base bulb



414H Small Pewter  
14" high, 6" wide  
1 standard base bulb  
Other size available  
413H Medium  
17" high, 8" wide  
1 standard base bulb



# NEWPORT SERIES

EXPERTLY HAND FASHIONED FOR INTERIOR & EXTERIOR USE  
 ANTIQUE BRASS, ANTIQUE COPPER, OLD BRASS, PEWTER, BLACK OR VERDE FINISH



600B Small Antique Copper  
 15" high, 6" wide  
 extends 5"  
 10-1/2" from mounting rod to  
 top of scroll  
 1 candle base bulb



600BG Small Old Brass  
 14" high, 6" wide, extends 5"  
 10-1/2" from mounting rod to top of  
 scroll - 1 standard base bulb  
 Other size avail: 607BG Medium  
 18" high, 7" wide, extends 6",  
 13" from mounting rod to top of scroll



607B Medium Pewter  
 19" high, 7" wide, extends 6",  
 13" from mounting rod  
 to top of scroll  
 2 candle base bulbs



605B Large Pewter  
 26" high, 9-1/2" wide,  
 17" from mounting rod  
 to top of scroll  
 3 candle base bulbs

# GLoucester Series

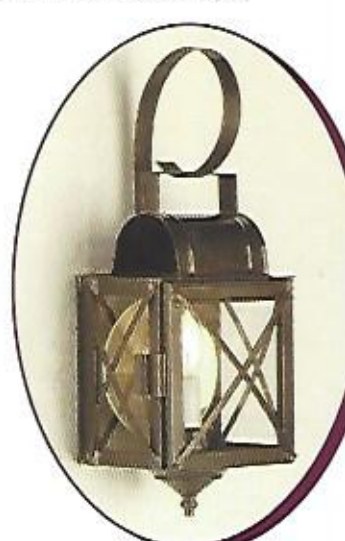
SUPERBLY HANDCRAFTED FROM SOLID COPPER & BRASS  
 ANTIQUE BRASS, ANTIQUE COPPER, OLD BRASS, PEWTER OR BLACK FINISH



602B Large Pewter  
 26" high, 9-1/2" wide, extends 8"  
 17" from mounting rod to top of  
 scroll - 3 candle bulbs  
 Other size avail: 604B Medium  
 19" high, 8" wide, extends 6-1/2"  
 12" from mounting rod to top of  
 scroll - 2 candle bulbs



609B Black  
 11" high, 16" wide, extends 7"  
 8" from mounting rod to top of fixture  
 2 standard base bulbs



603B Small Old Brass  
 15" high, 6-1/2" wide  
 extends 5"  
 10-1/2" from mounting rod to  
 top of scroll  
 1 candle bulb

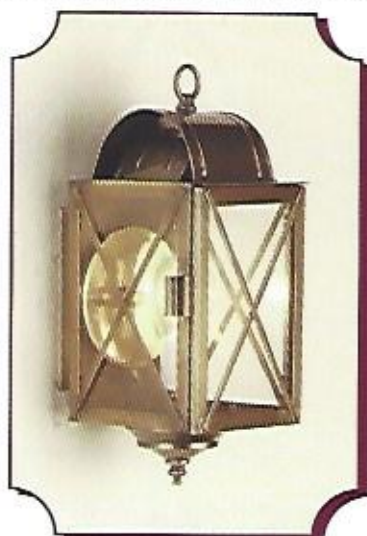


# CONCORD SERIES

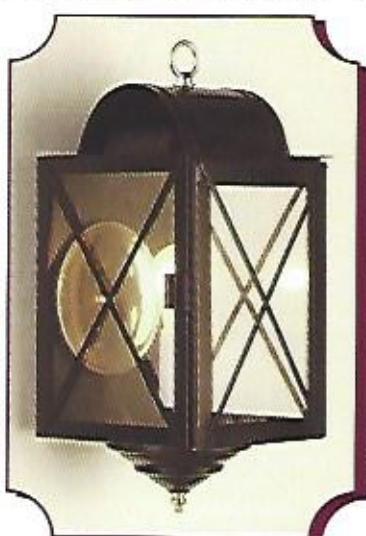
ADDITIONAL SOLID BRASS & SOLID COPPER  
LANTERNS REMINISCENT OF COLONIAL DAYS FOR WALL, POST OR CEILING MOUNT



57BG Medium Antique Brass  
12" high, 5 1/4" wide, extends  
6", 8-1/2" from mounting rod  
to top of fixture  
1 standard base bulb  
Other size not shown:  
56BG Small - 10" high, 5-1/2"  
wide, 6" deep, 5" from  
mounting rod to top of fixture  
1 standard base bulb



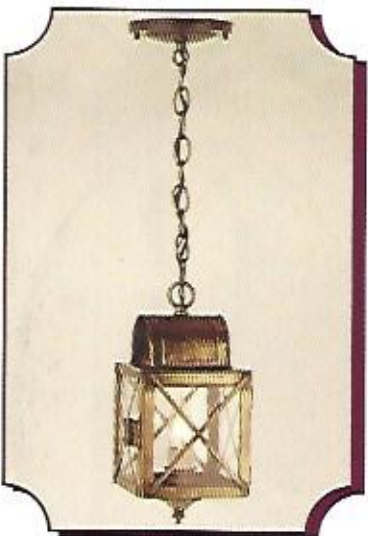
57B Medium Antique Brass  
14" high, 5 1/4" wide, extends  
6-1/4", 8-1/2" from mounting  
rod to top of fixture  
1 standard base bulb  
Other size not shown:  
56B Small - 11 3/4" high,  
5-1/2" wide, 6" deep, 5" from  
mounting rod to top of fixture  
1 standard base bulb



58B Large Black  
17" high, 8" wide  
extends 8-3/4"  
10" from mounting rod  
to top of fixture



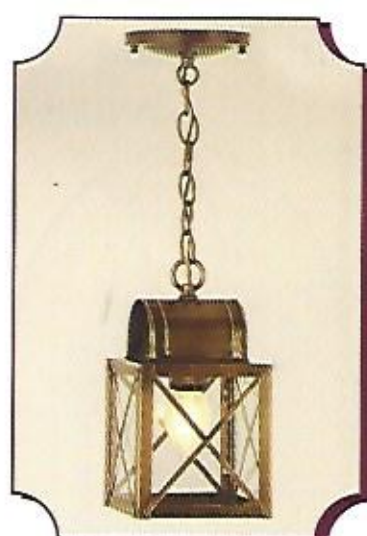
58BG Large Black  
14" high, 8" wide  
extends 8-3/4"  
10" from mounting rod  
to top of fixture



56H Small Antique Brass  
11 3/4" high, 5 1/2" wide,  
1 standard base bulb  
Other size not shown:  
57H Medium  
14" high, 5-1/4" wide  
1 standard base bulb



58P Large Antique Brass  
18" high, 7" wide  
1 standard base bulb



56HG Small Antique Brass  
10" high, 5 1/2" wide  
Other sizes not shown:  
57HG Medium - 12" high,  
5 1/4" wide, 1 standard base  
bulb. 57HC Medium w/2 light  
cluster 12" high, 5-1/4" wide, 2  
candle base bulbs. 58HG  
Large - 15" high, 7-1/2" wide  
1 standard base bulb. 58HC  
Large w/3 light cluster, 15 high,  
7" wide. 3 standard base bulbs

AVAILABLE IN ANTIQUE BRASS, ANTIQUE COPPER,  
VERDE, OLD BRASS, PEWTER OR BLACK FINISH



# H YANNIS SERIES

MADE FROM SOLID BRASS & SOLID COPPER  
 ANTIQUE BRASS, ANTIQUE COPPER, BLACK, OLD BRASS, PEWTER OR VERDE FINISH

**3BC Medium**

11" wide, 17-1/2" high, extends 12", 12" from mounting rod to top of fixture. 2 candle base bulbs

**3HC Medium**

11" wide, 17-1/2" high, 2 candle base bulbs

**3PC Medium**

11" wide, 20-1/4" high, 2 candle base bulbs

**4HC Large**

12" wide, 22" high, 4 candle base bulbs

**4PC Large**

12" wide, 25" high, 4 candle base bulbs

**7BC Small**

9-3/4" wide, 14-1/2" high, extends 11", 10" from mounting rod to top of fixture. 2 candle base bulbs

**7HC Small**

9-3/4" wide, 14 1/2" high, 2 candle base bulbs

**7PC Small**

9-3/4" wide, 16-1/2" high, 2 candle base bulbs

**81BC Large**

13" wide, 24" high, extends 14", 23 1/2" from mounting rod to top of fixture. 2 candle base bulbs

**81HC Large**

13" wide, 22" high, 4 candle base bulbs

**81PC Large**

13" wide, 25" high, 4 candle base bulbs

**82BC Medium**

10-1/2" wide, 22" high, extends 11-1/2", 19" from mounting rod to top of fixture. 2 candle base bulbs

**82HC Medium**

10-1/2" wide, 17" high, 2 candle base bulbs

**82PC Medium**

10-1/2" wide, 20" high, 2 candle base bulbs

**83BC Small**

8-1/2" wide, 18" high, extends 9-1/2", 14" mounting rod to top of fixture. 2 candle base bulbs

**83HC Small**

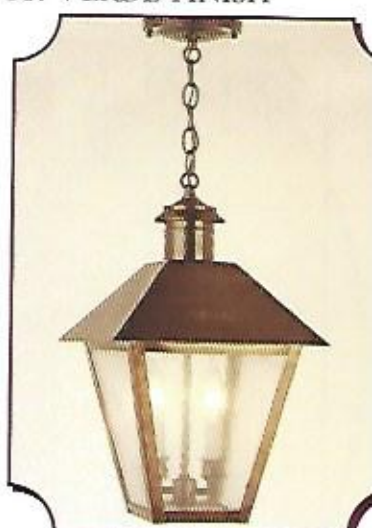
8-1/2" wide, 14" high, 2 candle base bulbs

**83PC Small**

8-1/2" wide, 16-1/2" high, 2 candle base bulbs



3PC Antique Copper Medium  
 Other sizes: 7PC - Small 4PC - Large



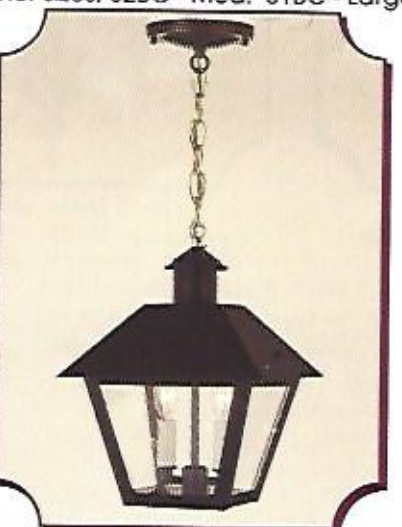
3HC Antique Brass Medium  
 Other sizes: 7HC - Small 4HC - Large



83BC Black Small  
 Other sizes: 82BC - Med. 81BC - Large



7BC Antique Copper  
 Other size: 3BC - Medium



7HC Black Small  
 Other sizes: 3HC - Medium  
 4HC - Large



82HC Antique Copper  
 Other sizes: 81HC - Large  
 83HC - Small

# BARNSTABLE SERIES

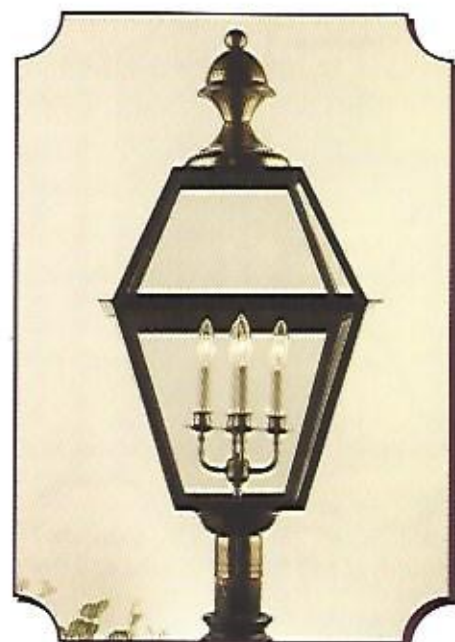
TALL AND STATELY LANTERNS HAND CRAFTED FROM SOLID COPPER & BRASS  
ANTIQUE BRASS, ANTIQUE COPPER, OLD BRASS, BLACK OR VERDE FINISH



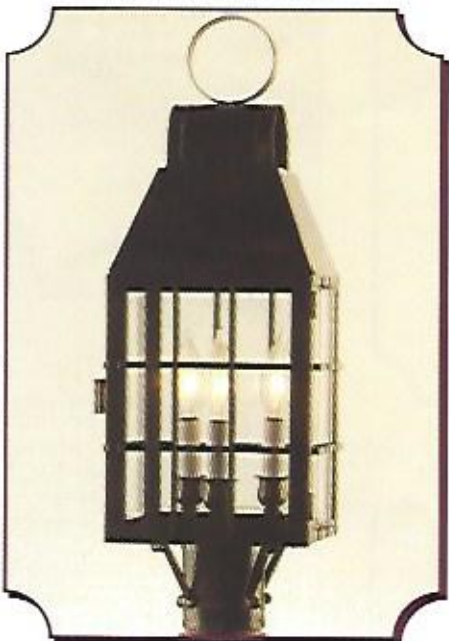
452P Antique Brass



475H Antique Brass



470P Antique Brass



312PC Black

Also available: 311PC - Large



451B Black Medium

Also available: 450B - Large  
451P - Medium 450P - Large



312HC Antique Copper Medium  
Also available: 311HC - Large

311HC	22" high, 9-1/2" wide, 4 candle base bulbs
311PC	25" high, 9-1/2" wide, 4 candle base bulbs
312HC	20" high, 8-1/2" wide, 4 candle base bulbs
312PC	23" high, 8" wide, 3 candle base bulbs
452P	26" high, 10-1/2" wide, 3 candle base bulbs
450B	36" high, 13" wide, 2 standard base bulbs
451B	24" high, 10-1/2" wide, extends 7", 11" from mounting rod to top of fixture, 2 candle base bulbs
450P	37" high, 13" wide, 3 standard base bulbs
451P	27" high, 10-1/2" wide, 2 standard base bulbs
470P	35" high, 17-1/2" wide, 4 candle base bulbs
475	46" high, 22" wide, 9 candle base bulbs

# WINCHESTER SERIES

SOLID BRASS & COPPER LANTERNS AVAILABLE IN BLACK, ANTIQUE BRASS, OLD BRASS, ANTIQUE COPPER & VERDE FINISH



611P Medium Black



613P Small Antique Copper



612P Post Model Large Black  
Shown with refractor for high intensity discharge power source  
4 Standard base bulbs optional  
Also available 612PX Extra Large



614P Shown with Refractor  
Black Post Model  
4 Standard base bulbs Optional  
614H Hanging (Not shown)  
for incandescent  
4 candle bulbs

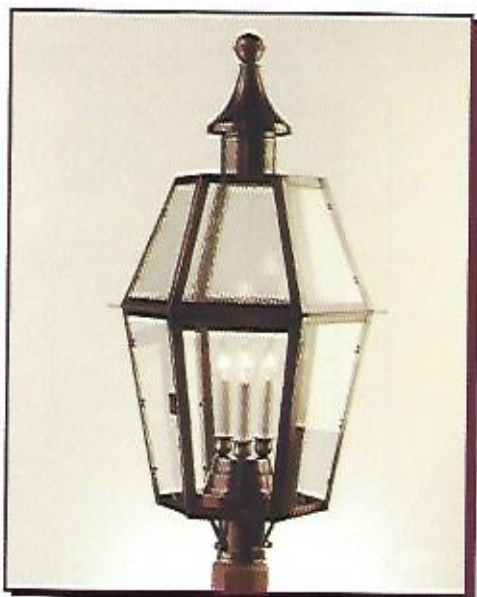


612H Large  
Hanging incandescent Antique Copper  
Also available 612HX Extra Large  
611H Small

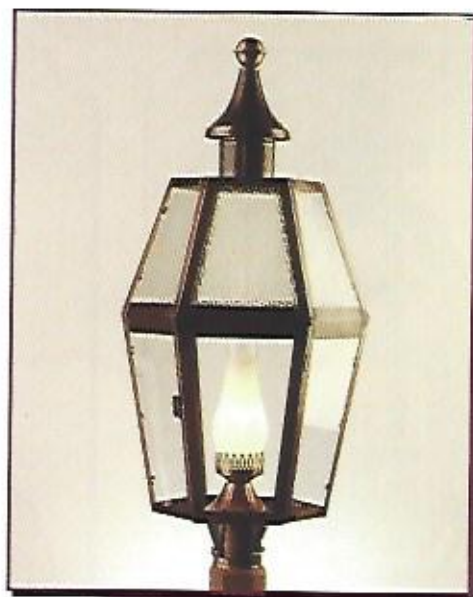
611H	28" high, 12" wide, 4 candle base bulbs
611P	32" high, 12" wide, 4 candle base bulbs
612H	37" high, 16" wide, 4 candle base bulbs
612HX	41" high, 18" wide, 4 candle base bulbs
612P	46" high, 16" wide, 4 standard base incandescent or high intensity bulbs
612PX	50" high, 18" wide, 4 standard base incandescent or high intensity bulbs
613P	22" high, 8" wide, 2 candle base bulbs
614H	25" high, 16" wide, 4 medium base bulbs
614P	34" high, 16" wide, 4 medium base bulbs

# CHARLESTON SERIES

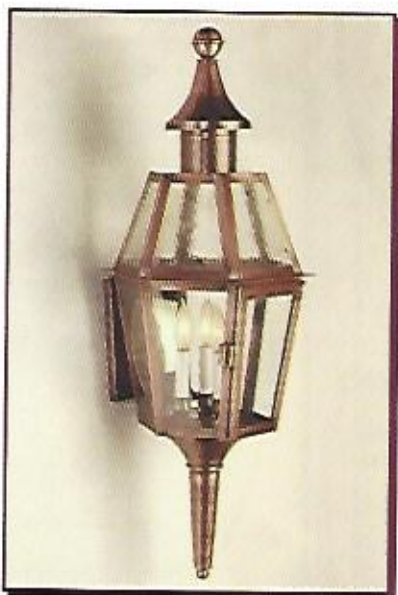
AVAILABLE IN ANTIQUE BRASS, ANTIQUE COPPER, PEWTER, VERDE OR BLACK FINISH



826PC Antique Copper



827P Antique Copper



826B Antique Copper



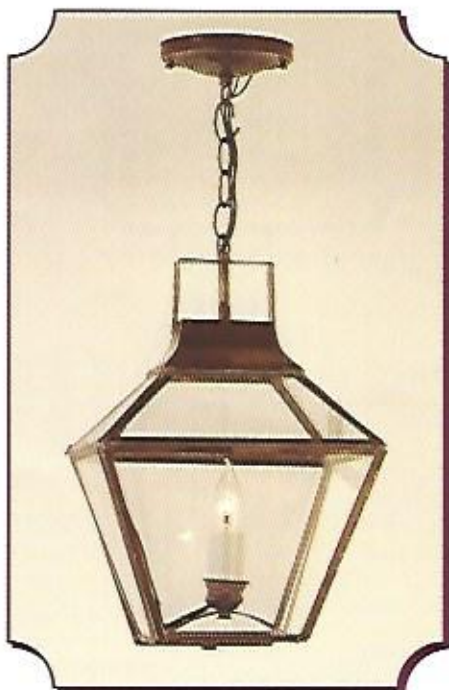
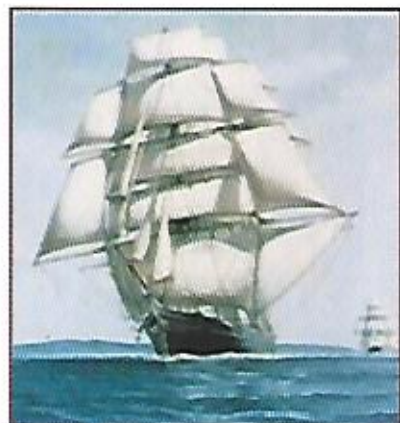
826H Antique Copper

MADE FROM SOLID COPPER OR BRASS  
CLEAR SEEDY GLASS STANDARD ON TOP PANELS

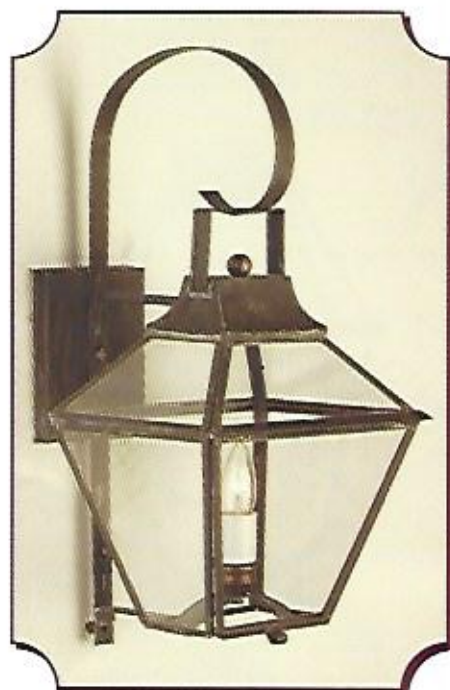
- 826B 37" high, 14" wide, 3 candle base bulbs, 20" from mounting bracket to top of fixture  
Extends 14" from wall
- 826H 24" high, 12" wide, 3 candle base bulbs
- 826PC 34" high, 16" wide, 3 candle base bulbs
- 827P 33" high, 14" wide, 1 standard base bulb with chimney

# SALEM SERIES

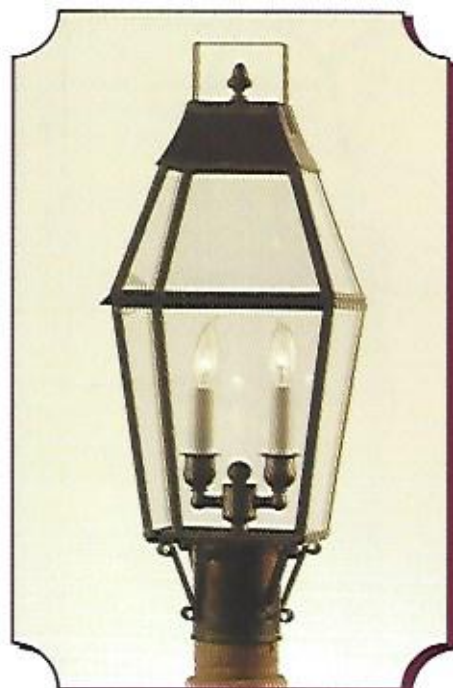
BEAUTIFUL HAND-LEADED SOLID BRASS LANTERNS  
WITH CLEAR DOUBLE-THICK TEMPERED GLASS PANELS.  
REPLICAS OF LANTERNS THAT ADORNED THE HOMES OF SALEM DURING THE CLIPPER SHIP ERA.  
VERY POPULAR FOR THE TRADITIONAL OR CONTEMPORARY DECOR.  
AVAILABLE IN ANTIQUE BRASS OR OLD BRASS FINISH



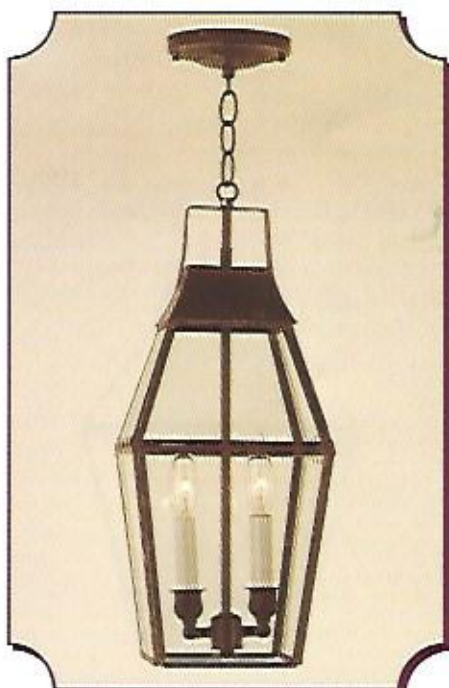
240H Old Brass  
15" high, 10-1/2" wide  
1 standard base bulb



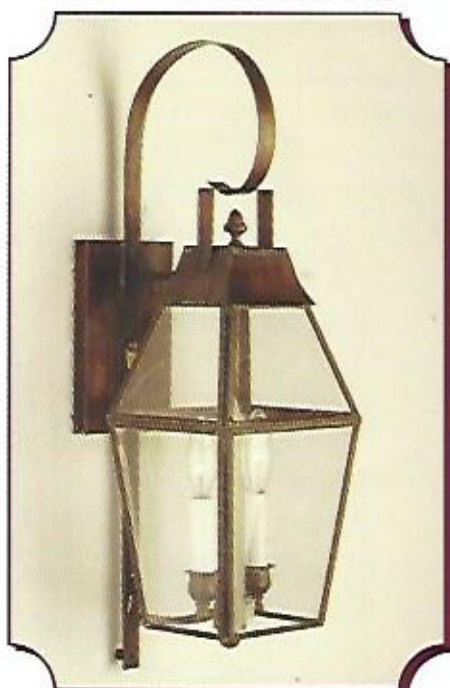
240B Old Brass  
20" high, 10-1/2" wide, extends 12"  
11" from mounting rod to top of  
scroll - 1 standard base bulb



242P Old Brass  
21" high, 8" wide  
2 candle bulbs



242H Antique Brass  
18" high, 8" wide  
2 candle bulbs



242B Old Brass  
23" high, 8" wide, extends 10-1/4"  
14" from mounting rod to top of  
scroll - 2 candle bulbs



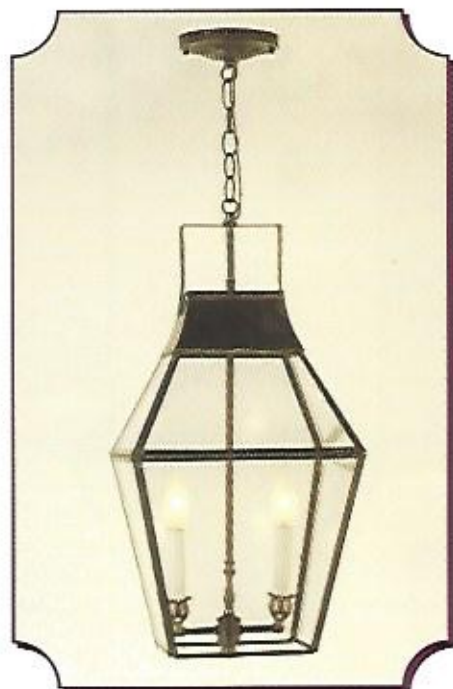
# SALEM SERIES

BEAUTIFUL HAND-LEADED SOLID BRASS LANTERNS  
WITH CLEAR DOUBLE-THICK TEMPERED GLASS PANELS.

REPLICAS OF LANTERNS THAT ADORNED THE HOMES OF SALEM DURING THE CLIPPER SHIP ERA.  
VERY POPULAR FOR THE TRADITIONAL OR CONTEMPORARY DECOR.  
AVAILABLE IN ANTIQUE BRASS OR OLD BRASS FINISH



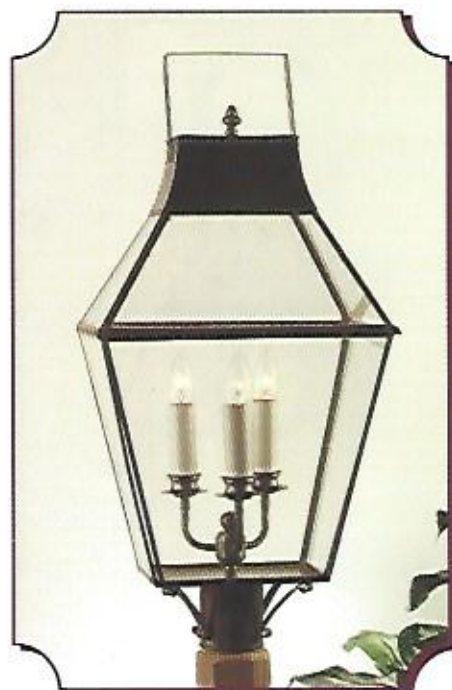
244P Old Brass  
25" high, 11-1/2" wide  
2 candle bulbs



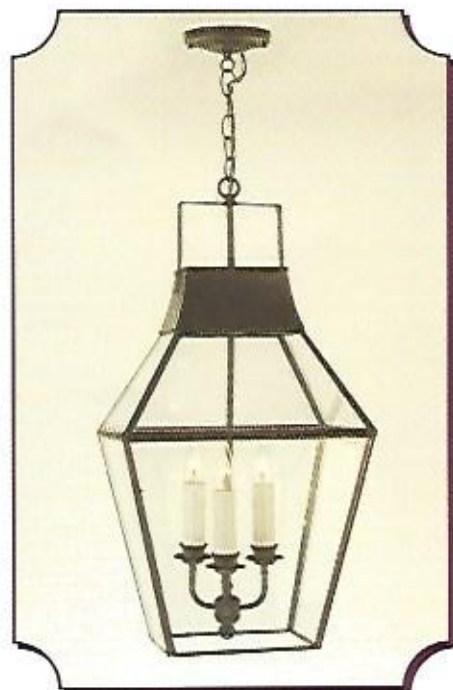
244H Old Brass  
22" high, 11-1/2" wide  
2 candle bulbs



244B Old Brass  
27-1/2" high, 11-1/2" wide, extends 12"  
14-1/2" from mounting rod to top of  
scroll - 2 candle bulbs



243P Old Brass  
30" high, 14" wide  
3 standard bulbs



243H Old Brass  
30" high, 14" wide  
3 standard bulbs

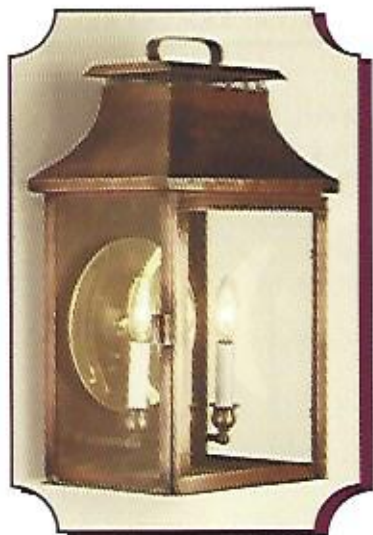


243B Old Brass  
33" high, 14" wide, extends 14-1/2"  
16" from mounting rod to top of  
scroll - 3 standard bulbs





126B Small Antique Copper



128B Large Antique Copper



127B Medium Antique Brass



825B Antique Brass

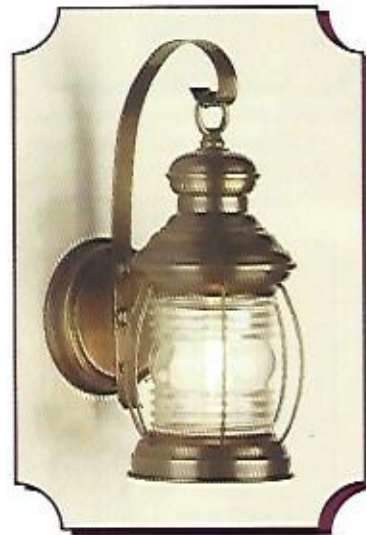
## PLYMOUTH SERIES

126B Small - 15" high, 9-3/4" wide,  
extends 8", 8-1/2" from mounting rod to  
top of fixture - 2 candle bulbs  
127B Medium - 16" high, 9" wide,  
extends 8-1/4", 10" from mounting rod to  
top of fixture - 2 candle bulbs  
128B Large - 21" high, 11-1/4" wide  
extends 9-1/2", 14" from mounting rod to  
top of fixture - 3 candle bulbs

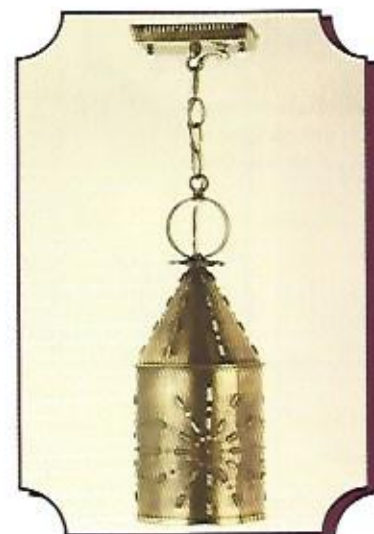
410B - 19" high, 6" wide, extends 8-1/2"  
16" from mounting rod to top of scroll  
1 standard base bulb  
410H - 15" high, 6" wide  
1 standard base bulb

420B - 13" high, 6" wide,  
extends 8", 8-1/2" from mounting rod to  
top of scroll, 1 standard base bulb

825B - 16" high, 10"-1/2" wide, extends 7-1/4"  
11" from mounting rod to top of fixture  
1 standard base bulb



420B Antique Brass



410H Antique brass



410B Antique Copper

ANTIQUE BRASS, OLD BRASS, ANTIQUE COPPER,  
PEWTER, BLACK OR VERDE FINISH



# LIBERTY TREE AND DR.'S LANTERN SERIES

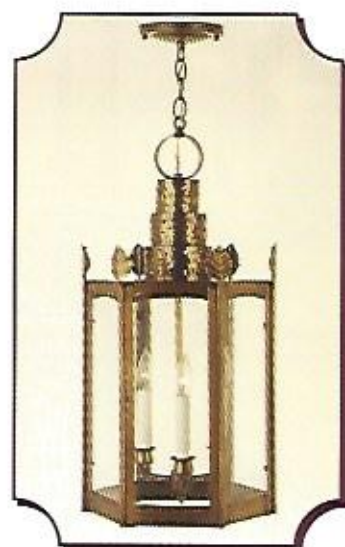
AUTHENTIC DESIGNS THAT HAVE BEEN FAITHFULLY REPRODUCED FROM SOLID BRASS  
AVAILABLE IN ANTIQUE BRASS, ANTIQUE COPPER, OLD BRASS, BLACK OR VERDE FINISH



804P w/ Leaves Large Antique Brass  
Other size: 803P Medium



803B w/Leaves Medium Antique Brass  
Other size: 804B Large



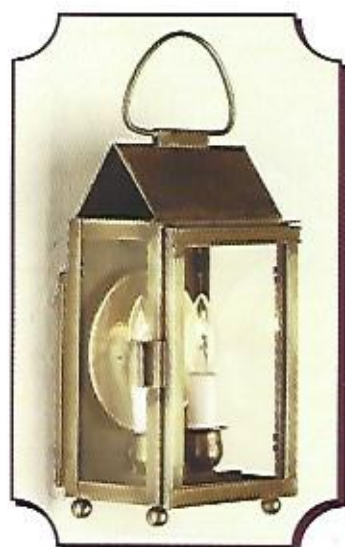
804H w/Leaves Large Antique Brass  
Other size: 803H



300P Large Doctor's Post  
Antique Copper



300B Large Doctor's Wall  
Antique Brass



200B Small Doctor's Wall  
Antique Brass

- 803B 10" wide, 27-1/4" high, extends 13", 16" from mounting rod to top of fixture. 3 candle base bulbs
- 803H 10" wide, 22" high, 18" scroll chain. 3 candle base bulbs
- 803P 10" wide, 24" high. 3 candle base bulbs
- 804B 11" wide, 30" high, extends 14-1/2", 21" from mounting rod to top of fixture. 3 candle base bulbs
- 804H 11" wide, 25-1/2" high, 18" scroll chain. 3 candle bulbs
- 804P 11" wide, 27" high. 3 candle bulbs
- 200B SMALL DR.'S WALL LANTERN 5-3/4" wide, 14" high, extends 4-3/4", 9-1/2" from mounting rod to top of fixture. 2 candle bulbs
- 300B LARGE DR.'S WALL LANTERN 6-1/2" wide, 22" high, extends 7-1/2", 15" from mounting rod to top of fixture. 2 candle bulbs
- 300P LARGE DR.'S POST LANTERN 6-1/2" wide, 25-1/2" high. 2 candle base bulbs



# MONTICELLO SERIES

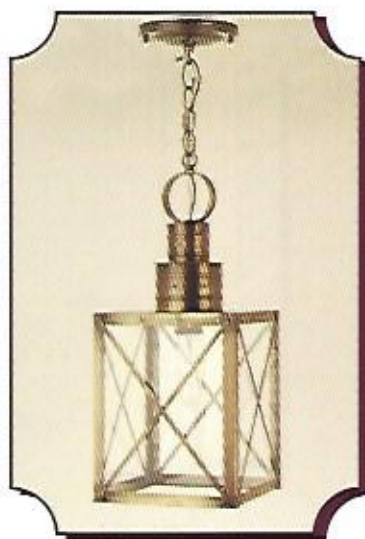
ENCHANTING LANTERNS MADE FROM SOLID BRASS & SOLID COPPER  
FIT THEM INTO YOUR SPECIAL SETTINGS AS YOU PLEASE  
ANTIQUE BRASS, OLD BRASS, ANTIQUE COPPER, PEWTER, BLACK OR VERDE FINISH



53B Black Small  
16" high, 6" wide,  
extends 6-1/2", 13" from  
mounting rod to  
top of scroll  
1 standard base bulb



54B Medium Antique Brass  
18" high, 6" wide, extends 6",  
13" from mounting rod to top of  
scroll - 1 standard base bulb  
Other size: 55B Large 23" high,  
8" wide, extends 6", 13" from  
mounting rod to top of scroll



55H Large Antique Brass  
18" high, 7-3/4" wide,  
1 standard base bulb  
Other sizes: 54H Medium  
16" high, 5-1/2" wide  
1 standard base bulb  
53H Small - 14" high, 5-1/2" wide  
1 standard base bulb



55P Large Black  
21" high, 8" wide  
1 standard base bulb

# L EXINGTON SERIES

SOLID BRASS & SOLID COPPER LANTERNS THAT ENCOMPASS  
A WORLD OF SKILLED CRAFTSMANSHIP & EXQUISITE ARTISTRY.  
ANTIQUE BRASS, OLD BRASS, ANTIQUE COPPER, PEWTER, BLACK OR VERDE FINISH



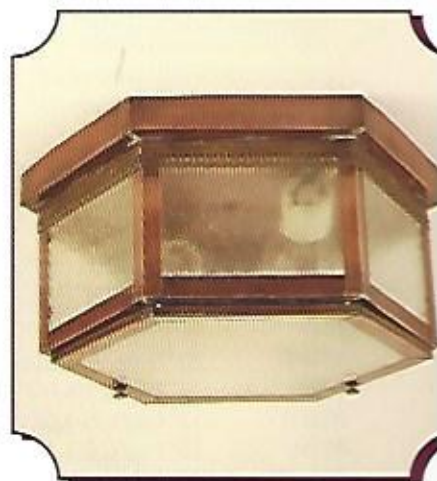
650B Antique Brass  
17" high, 15" wide  
extends 6", 9" from  
mounting rod to  
top of fixture  
3 candle base bulbs



651C Antique Brass  
6" high, 14-1/2" wide  
3 standard base bulbs



650P Antique Brass  
17" high, 15" wide  
3 candle base bulbs

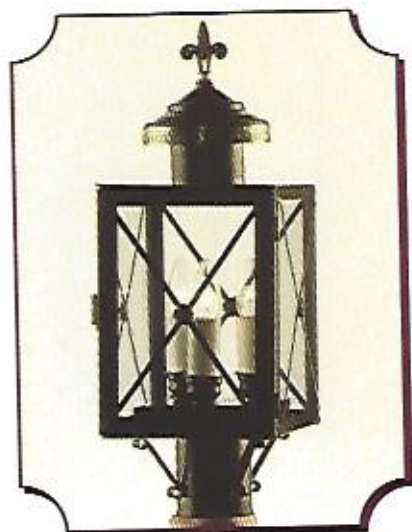


652C Antique Copper  
6" high, 12" wide  
2 standard base bulbs

# NEW ORLEANS SERIES

DELICATELY HAND DETAILED IN COUNTRY FRENCH FASHION  
MADE FROM SOLID COPPER & BRASS

AVAILABLE IN ANTIQUE BRASS, ANTIQUE COPPER, OLD BRASS, BLACK, PEWTER, OR VERDE FINISH



401P Black Medium  
Also available: 400P Large 402P Small



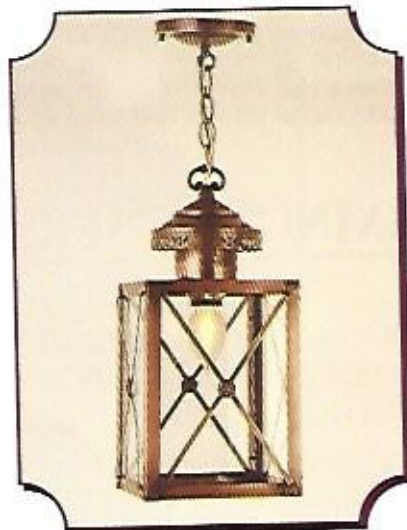
402B Black Small  
Also available: 401B Medium



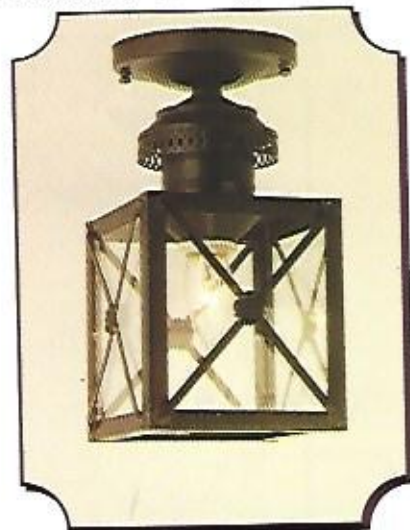
402P Black Small  
Also available: 400P Large 401P Medium



403CL Small Antique Copper  
Also available: 402CL Medium



402HG Antique Copper Medium  
Also available: 403HG Small 401HG Large



403CL Old Brass Small

- |       |   |
|-------|---|
| 400P  | 23" high, 9-1/2" wide, 1 standard base bulb   |
| 400PC | 23" high, 9-1/2" wide, 3 candle base bulbs  |
| 401B  | 19" high, 7-1/2" wide, extends 5", 8" from mounting rod to top of fixture, 1 standard base bulb |
| 401H  | 17" high, 7-1/2" wide, 1 standard base bulb   |
| 401HG | 15" high, 7-1/2" wide, 1 standard base bulb   |
| 401P  | 20" high, 7-1/2" wide, 1 standard base bulb   |
| 401PC | 20" high, 8" wide, 3 candle base bulbs  |
| 402B  | 17" high, 6" wide, extends 4", 10" from mounting rod to top of fixture, 1 standard base bulb    |
| 402CL | 11" high, 5-1/2" wide, 1 standard base bulb   |
| 402H  | 15" high, 5-1/2" wide, 1 standard base bulb   |
| 402HG | 16" high, 5-1/2" wide, 1 standard base bulb   |
| 402P  | 16" high, 5-1/2" wide, 1 standard base bulb   |
| 403CL | 10" high, 6" wide, 1 standard base bulb   |
| 403H  | 11" high, 5-1/2" wide, 1 standard base bulb   |
| 403HG | 9-1/2" high, 5-1/2" wide, 1 standard base bulb  |



# FALMOUTH SERIES

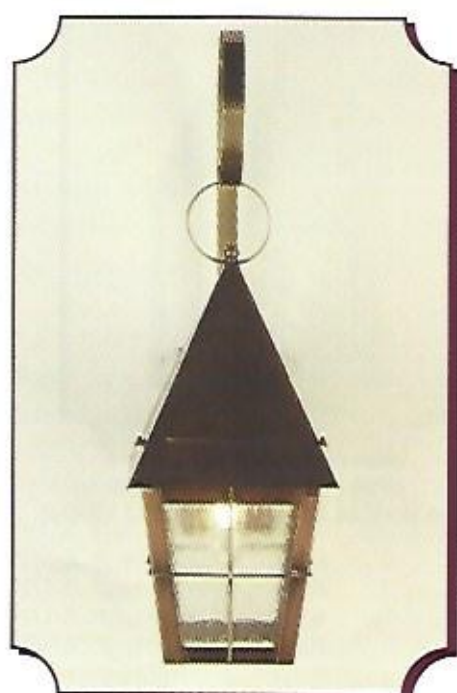
MADE FROM SOLID BRASS & SOLID COPPER  
 ANTIQUE BRASS, ANTIQUE COPPER, OLD BRASS, VERDE OR BLACK FINISH  
 CLEAR SEEDY GLASS STANDARD



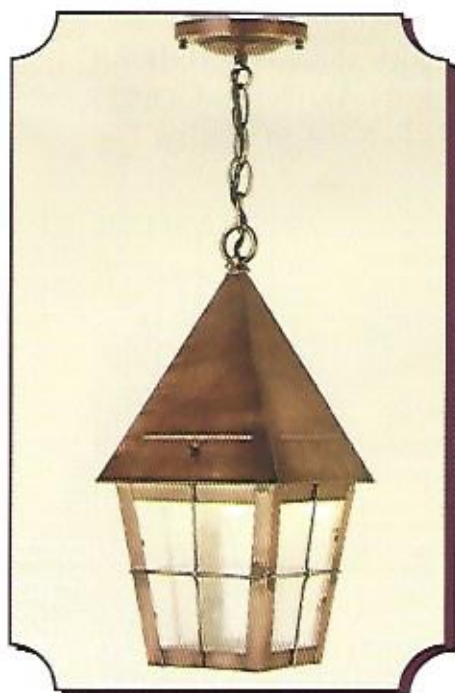
321B Antique Copper



321P Antique Copper



320B Antique Copper



320H Antique Copper



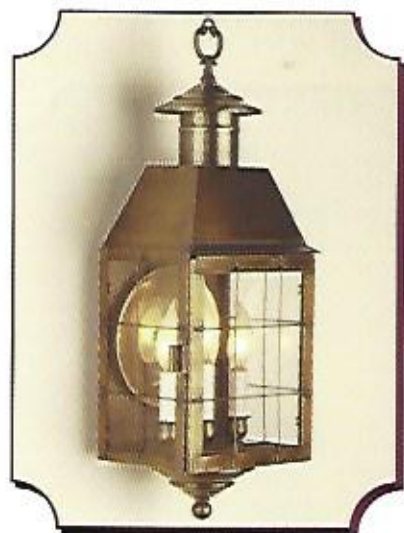
321H Antique Copper

- 320B 7" wide, 23" high, 9" deep, 15" from mounting rod to top of fixture. 1 standard bulb  
 320H 7" wide, 16" high. 1 standard bulb  
 321B 11" wide, 24" high, 11" deep, 15" from mounting rod to top of fixture. 1 standard bulb  
 321H 11" wide, 18" high. 1 standard bulb  
 321P 11" wide, 19" high. 1 standard bulb



# WASHINGTON SERIES

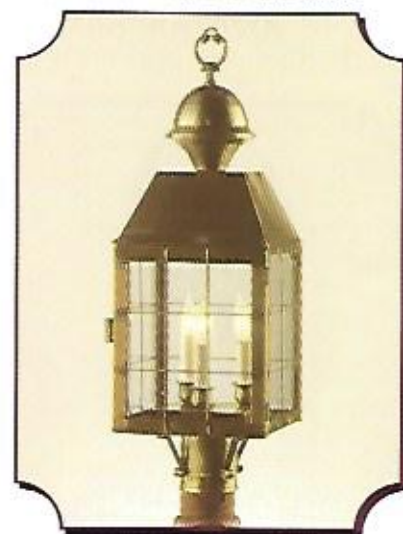
ANTIQUE BRASS, ANTIQUE COPPER, OLD BRASS, PEWTER, BLACK OR VERDE FINISH



405B Antique Brass Large  
Also available: 405H Hanging Model



406B Antique Brass Medium  
Also available: 406H Hanging Model  
418B Small



405P Antique Brass Large

405B	24" high, 8-1/2" wide, extends 8", 16" from mounting rod to top of fixture, 3 candle bulbs
405H	24" high, 8-1/2" wide, 3 candle bulbs
405P	24" high, 8-1/2" wide, 3 candle bulbs
406B	16" high, 6" wide, extends 5", 11" from mounting rod to top of fixture, 2 candle bulbs
406H	16" high, 6" wide, 2 candle bulbs
418B Small	14" high, 6" wide, extends 5", 9" from mounting rod to top of fixture, 2 candle bulbs

BEAUTIFULLY DESIGNED POST LANTERNS THAT ARE SEEN IN HISTORIC NEW ENGLAND. CONSTRUCTED FROM SOLID COPPER. AVAILABLE IN ANTIQUE COPPER OR BLACK FINISH  
INCANDESCENT AND HID POWER SOURCES

## NEWBURYPORT



910P Black  
40" high including cradle  
14" wide - One medium base bulb

## NANTUCKET



920P Antique Copper  
43" high including cradle  
15-1/2" wide - One medium base bulb



# PHILADELPHIA SERIES

SCONCES THAT ARE FINELY DETAILED TO ADD CHARM & ELEGANCE. MADE FROM SOLID COPPER AND SOLID BRASS. ANTIQUE BRASS, ANTIQUE COPPER, PEWTER OR BLACK FINISH.



SC27 Antique Brass



SC26 Pewter



SC20 Antique Brass



SC28 Antique Copper



SC23 Pewter



SC29 Antique Copper



SC21 Antique Copper



SC31 Antique Brass

- SC20 14" high, 12" wide, extends 6",  
5" from mounting rod to top of fixture.  
1 candle base bulb
- SC21 11" high, 4-3/4" wide, extends 4",  
6-1/2" from mounting rod to top of fixture.  
1 candle base bulb
- SC22 14-1/2" high, 8" wide, extends 6",  
5-1/2" from mounting rod to top of fixture.  
1 candle base bulb
- SC23 13-1/2" high, 7-3/4" wide, extends 6-1/2",  
5-1/2" from mounting rod to top of fixture.  
1 candle base bulb
- SC24 10-3/4" high, 6-1/4" wide, extends 6",  
4" from mounting rod to top of fixture.  
1 candle base bulb
- SC26 11-1/2" high, 6" wide, extends 7",  
6" from mounting rod to top of fixture.  
1 candle base bulb
- SC27 17" high, 8" wide, extends 6" from  
mounting rod to top of fixture.  
2 candle base bulbs
- SC28 10-1/2" high, 7" wide, extends 5-1/2",  
5-1/4" from mounting rod to top of fixture.  
2 candle base bulbs
- SC29 8-1/2" high, 4" wide, extends 5",  
4-1/2" from mounting rod to top of fixture.  
1 candle base bulb
- SC30 11-1/2" high, 4-1/2" wide, extends 4",  
5" from mounting rod to top of fixture.  
1 candle base bulb
- SC31 10-1/2" high, 6" wide, extends 7",  
3-1/2" from mounting rod to top of fixture.  
1 candle base bulb



# DECORATIVE FIXTURES THAT MOUNT FLUSH AGAINST THE CEILING. DESIRABLE FOR HALLS, FOYERS, KITCHENS, DENS & OUTDOOR USE

MADE FROM SOLID COPPER & SOLID BRASS

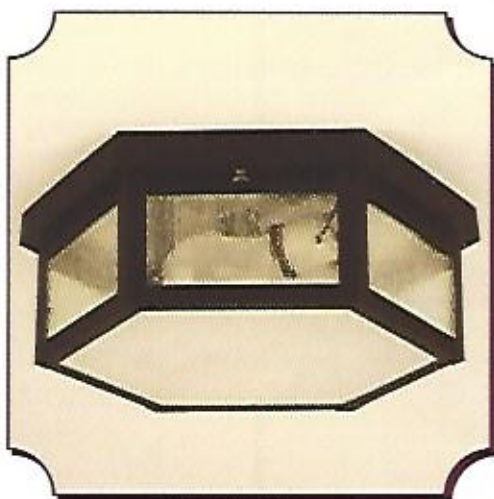
ANTIQUÉ BRASS, OLD BRASS, ANTIQUÉ COPPER, VERDE, PEWTER OR BLACK FINISH  
SIDE PANELS ANTIQUÉ CLEAR SEEDY GLASS, BOTTOM PANEL ANTIQUÉ FROSTED SEEDY GLASS



11C Small Pewter



12C Medium Old Brass  
Also available: 13C Large



17C Medium Black  
Also available: 18C Large



15C Small Antique Brass

14C Medium  
16C Large



NG 14C Medium Antique Brass  
Also available:

NG 15C Small  
NG 16C Large

11C	7-1/2" square, 4-1/2" deep, 1 standard bulb
12C	10" square, 4-1/2" deep, 2 standard bulbs
13C	14" square, 4-1/2" deep, 3 standard bulbs
14C	10" square, 4-1/2" deep, 2 standard bulbs
15C	7-1/2" square, 4-1/2" deep, 1 standard bulb
16C	14" square, 4-1/2" deep, 3 standard bulbs
17C	10" wide, 4-1/2" deep, 2 standard bulbs
18C	12" wide, 4-1/2" deep, 3 standard bulbs

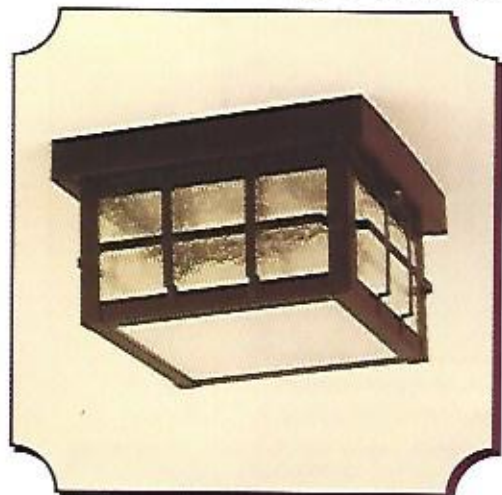




# DECORATIVE FIXTURES THAT MOUNT FLUSH AGAINST THE CEILING. DESIRABLE FOR HALLS, FOYERS, KITCHENS, DENS & OUTDOOR USE

MADE FROM SOLID COPPER & SOLID BRASS

ANTIQUÉ BRASS, OLD BRASS, ANTIQUÉ COPPER, VERDE, PEWTER OR BLACK FINISH  
SIDE PANELS ANTIQUÉ CLEAR SEEDY GLASS, BOTTOM PANEL ANTIQUÉ FROSTED SEEDY GLASS



8C Small Black



9C w/Pierced sides Pewter



9C Medium Antique Copper  
Also available: 10C Large



651C Large Antique Brass



652C Medium Antique Copper

- 8C 7-1/2" square, 4-1/2" deep, 1 standard bulb
- 9C 10-1/2" square, 4-1/2" deep, 2 standard bulbs
- 10C 14" square, 4-1/2" deep, 3 standard bulbs
- 651C 15" wide, 6" deep, 3 standard bulbs
- 652C 12" wide, 6" deep, 2 standard bulbs



# DISTINCTIVE HANDMADE RALEIGH SERIES CHANDELIERS

WITH 18" HANDMADE HOURGLASS CHAIN. MADE FROM SOLID BRASS AND SOLID COPPER.  
ANTIQUE BRASS, ANTIQUE COPPER, PEWTER OR BLACK FINISH



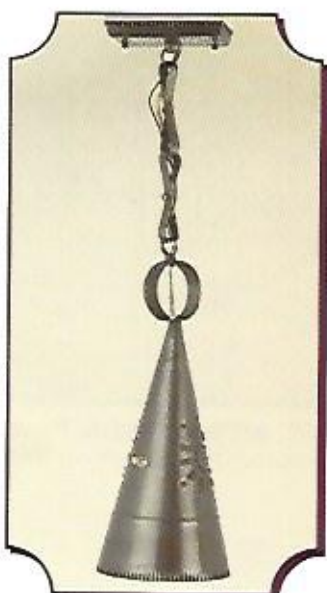
CH25 Maple Acorn Center Black arms  
Other sizes: CH26 & CH27



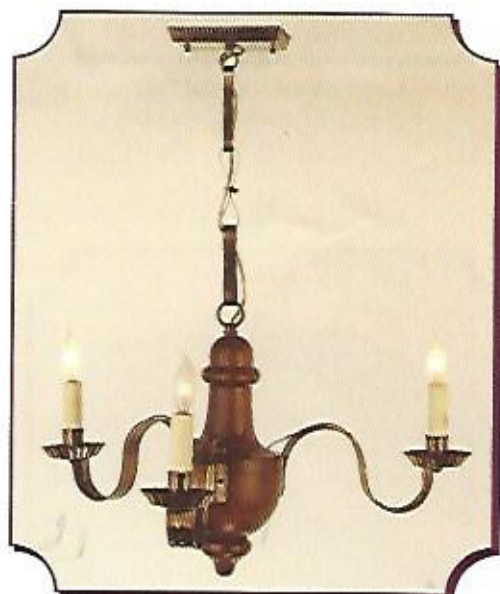
CH23SB with downlight, Antique Brass - Shown  
w/Sunburst pattern - Other sizes: CH28 & CH29



CH22 with downlight, Antique Brass  
Other sizes: CH10 & CH9



RCISB - Raleigh Cone, Pewter  
Shown w/Sunburst pattern



CH27 Maple Acorn center, Antique Brass arms  
Other sizes: CH25 & CH26

- RCISB - RALEIGH CONE Cone shown with sunburst pattern. 6-1/4" wide, 15" high, 1 standard base downlight bulb
- CH10 26" wide, 18" high, 5 candle bulbs, 1 standard base downlight bulb, 3 position on/off switch
- CH19 21" wide, 18-1/2" high, 4 candle bulbs, 1 standard base downlight bulb, 3 position on/off switch
- CH22 18" wide, 17-1/2" high, 5 candle bulbs, 1 standard base downlight bulb, 3 position on/off switch
- CH23 26-1/2" wide, 15" high, 5 candle bulbs, 1 standard base downlight bulb, 3 position on/off switch
- CH25 26-1/2" wide, 14" high, 5 candle bulbs
- CH26 28" wide, 15" high, 5 candle bulbs
- CH27 21" wide, 15" high, 3 candle bulbs
- CH28 24" wide, 15" high, 4 candle bulbs, 1 standard base downlight bulb, 3 position on/off switch
- CH29 21" wide, 15" high, 4 candle bulbs, 1 standard base downlight bulb, 3 position on/off switch



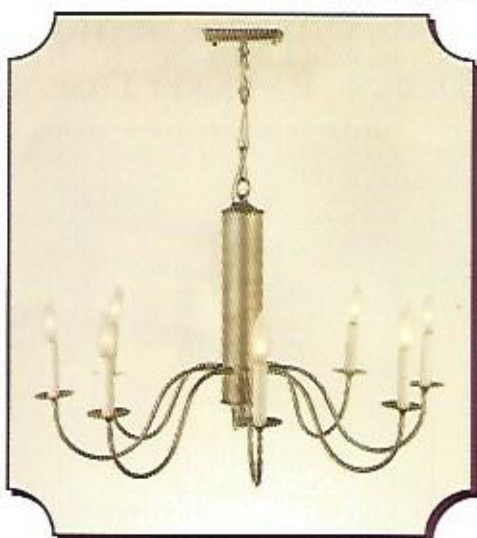


# MEETINGHOUSE SERIES

SOLID BRASS AUTHENTIC REPRODUCTIONS  
ANTIQUÉ BRASS, PEWTER OR BLACK FINISH



812H Antiqué Brass  
Other sizes: 813H, 814H, 815H, 816H



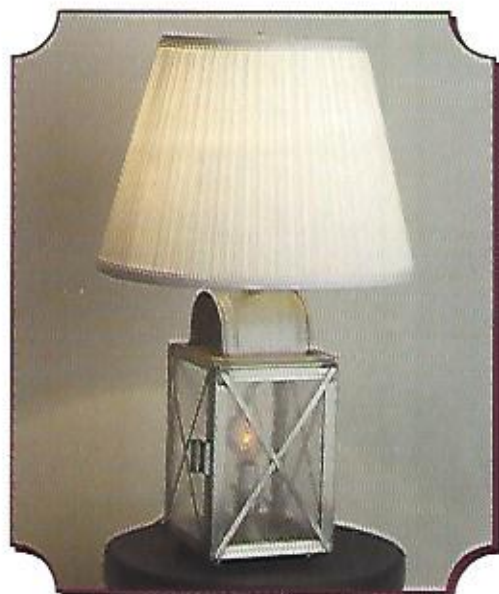
816H Antiqué Brass  
Other Sizes: 812H, 813H, 814H, 815H



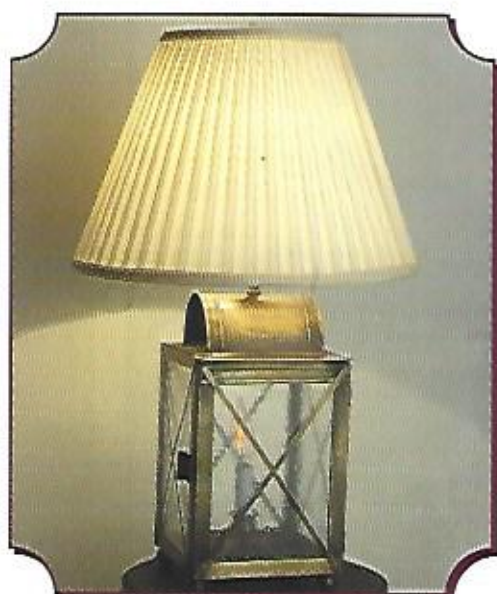
914H Antiqué Brass

See price list for dimensions of Meetinghouse Series Chandeliers

SOLID BRASS OR COPPER TABLE LAMPS IN ANTIQUÉ BRASS, ANTIQUÉ COPPER OR PEWTER FINISH. OTHER LANTERN MODELS CAN BE ADAPTED TO TABLE LAMPS UPON REQUEST.



57TL - Shown in Pewter finish.  
Overall Height 22", Lantern is 6" wide x 6" deep x 10" high. 3 circuit switch allows bottom and top to light independently or together. Shade bottom diameter is 13". Shown with beige wide pleat shade. Shown w/flicker bulb.



58TL - Shown in Antiqué Brass finish.  
Overall Height 26", Lantern is 8" wide x 8" deep x 13-1/2" high. 3 circuit switch allows bottom and top to light independently or together. Shade bottom diameter is 14-1/2". Shown with white mushroom pleat shade. Shown w/flicker bulb.





# MISSION ARTS & CRAFTS LIGHTING AT ITS FINEST

FINE HANDCRAFTED LANTERNS FOR INTERIOR OR EXTERIOR USE

SOLID BRASS & SOLID COPPER

CHOICE OF WHITE OPAL, WHITE IRIDESCENT, OR HONEY ART GLASS

AVAILABLE IN BLACK, ANTIQUE BRASS, OLD BRASS, ANTIQUE COPPER, PEWTER OR VERDE FINISH

S - ANGLE SPOKE DESIGN P - PICKET DESIGN A - ARROW DESIGN



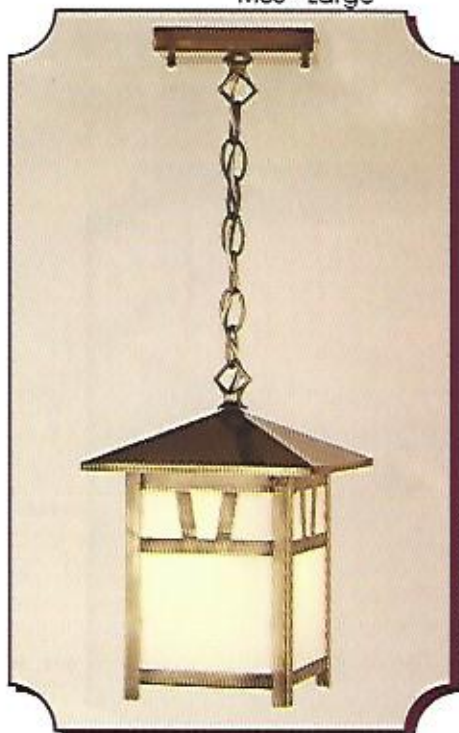
M3-S Small Angle Spoke - Verde Green with White Iridescent glass  
Also available: M4S - Medium  
M5S - Large



M4-P Medium Picket - Antique Brass with White Iridescent glass  
Also available: M3P - Small  
M5P - Large

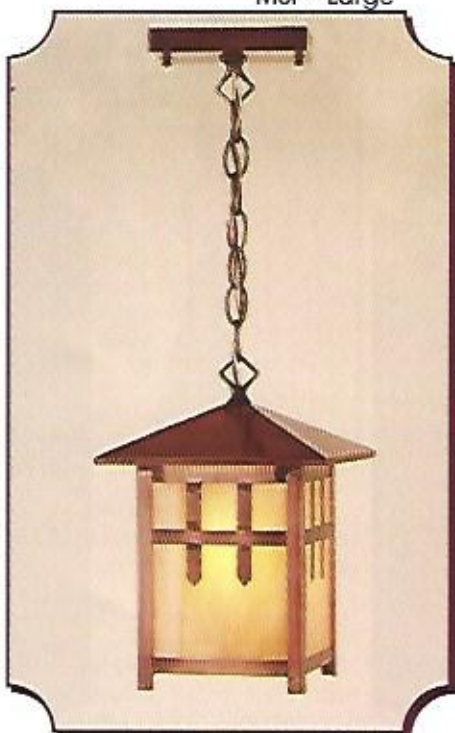


M3-A Small Arrow - Old Brass with White Opal glass  
Also available: M4A - Medium  
M5A - Large



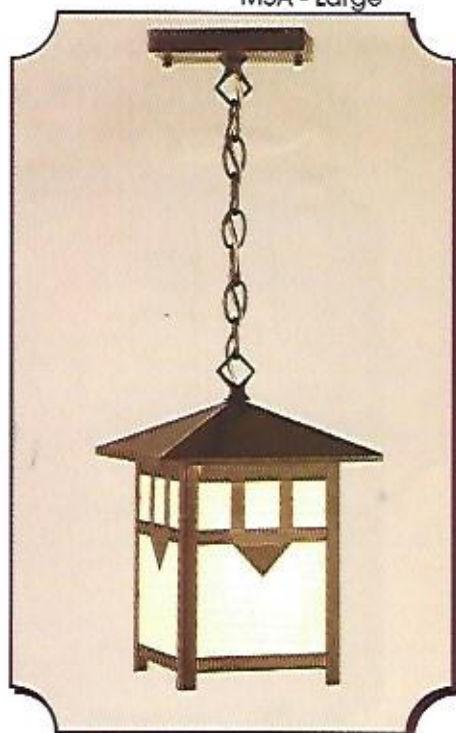
M2H-S Angle Spoke - Antique Brass with White Iridescent glass

Also Available: M7H Angle Spoke



M2H-P Picket - Antique copper with Honey Art glass

Also Available: M7H Picket



M2H-A Arrow - Antique Copper with White Opal glass

Also Available: M7H Arrow

M2-H A,P & S	21" high, 12" wide roof width, 9" wide lantern width, 1 standard base bulb
M3 A,P & S	7-1/2" square, 5-1/2" deep, 1 standard base bulb
M4 A,P & S	10" square, 5-1/2" deep, 2 standard base bulbs
M5 A,P & S	14-1/2" square, 5-1/2" deep, 3 standard base bulbs
M7H	10-1/2" high - 7-1/2" Roof Width, 5-1/4" Wide Lantern, takes 1 standard base bulb

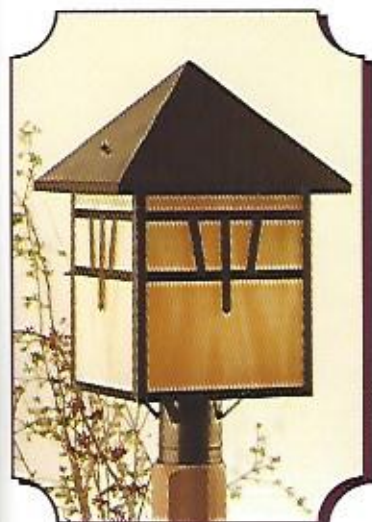


# MISSION ARTS & CRAFTS LIGHTING AT ITS FINEST

HANDCRAFTED LANTERNS MADE FROM SOLID BRASS & SOLID COPPER  
CHOICE OF WHITE OPAL, WHITE IRIDESCENT OR HONEY ART GLASS.

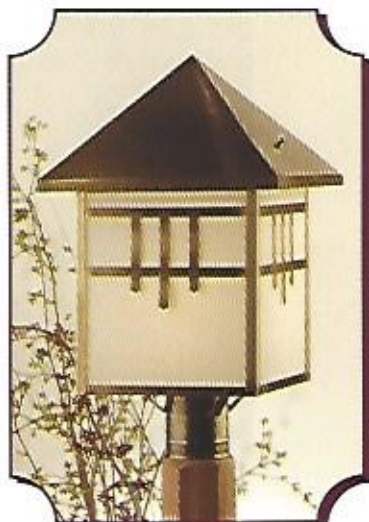
AVAILABLE IN BLACK, ANTIQUE BRASS, OLD BRASS, ANTIQUE COPPER, PEWTER OR VERDE FINISH

S - ANGLE SPOKE DESIGN P - PICKET DESIGN A - ARROW DESIGN



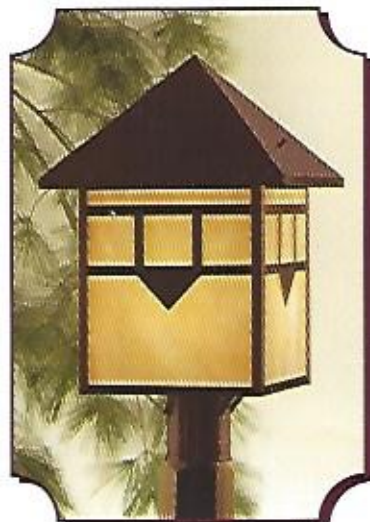
M1-S  
Shown in Old Brass  
w/Honey Art glass

Overall Height 20" Sq.



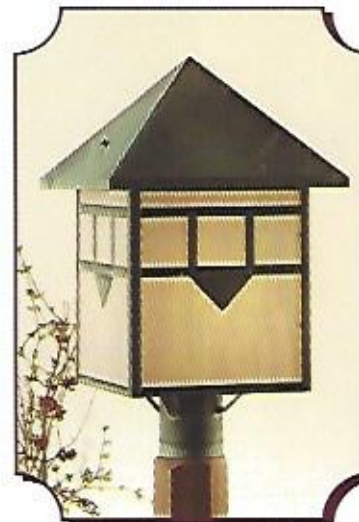
M1-P  
Shown in Antique Brass  
w/White Opal glass

Hood 12" Sq.



M1-A  
Shown in Antique Copper  
w/Honey Art glass

Cage 9-1/2" Sq.



M1-A  
Shown in Verde  
w/White Iridescent glass

1 Med. Base bulb



M6-P 12-1/4" high  
7-1/2" wide, extends 10"  
Shown in Antique Copper  
with Honey Art glass



M6-S 12-1/4" high  
7-1/2" wide, extends 10"  
Shown in Antique Brass  
with White Opal glass



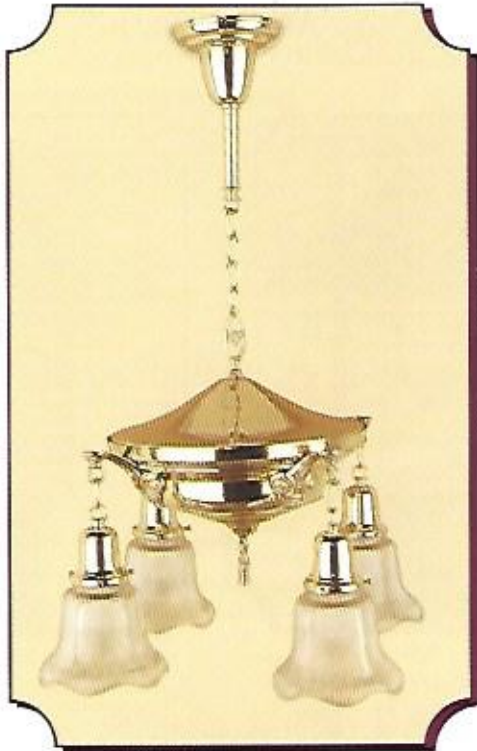
M6-A 12-1/4" high  
7-1/2" wide, extends 10"  
Shown in Old Brass with  
White Iridescent glass



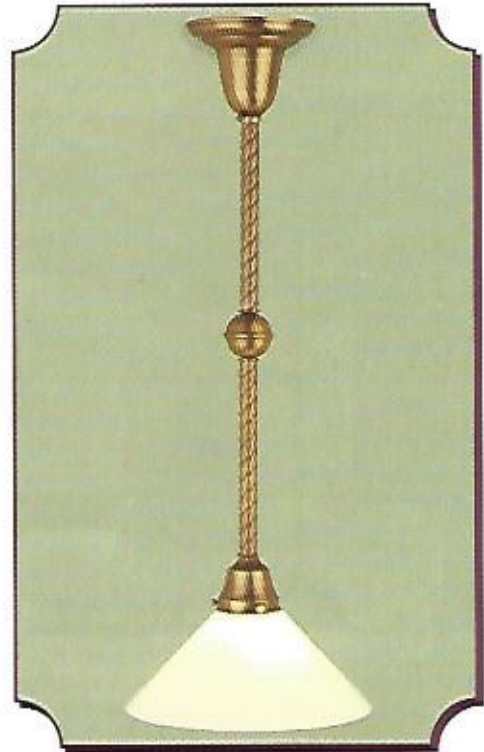
# SOLID BRASS VICTORIAN ERA FIXTURES

## EXPERTLY REPRODUCED

AVAILABLE IN POLISHED OR ANTIQUE BRASS FINISH



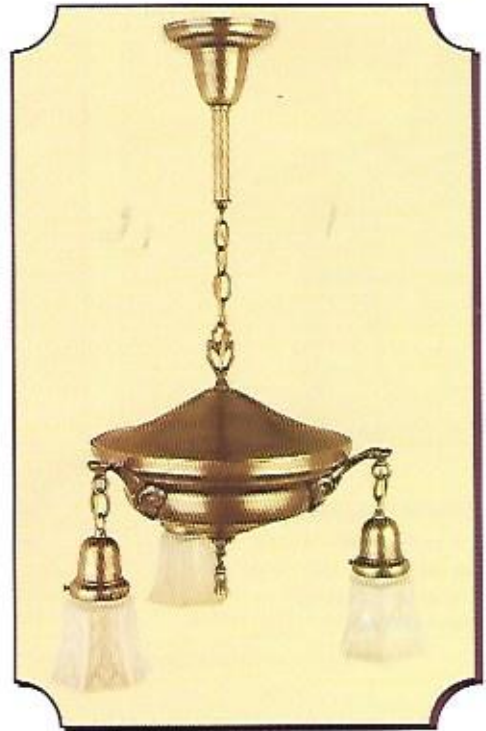
#484 Polished Brass shown w/61740 Shade  
Overall height 30" to bottom of shade,  
17" wide - 4 standard base bulbs



#1RS Rope Stem shown in Antique Brass  
w/White Opal shade - Overall height 28" to  
bottom of shade - 1 standard base bulb



#1RS Rope Stem shown in Antique Brass  
w/Halophane Style shade - Overall height 28"  
to bottom of globe - 1 standard base bulb



#483 Antique Brass w/16740 Shade - Overall  
height 29" to bottom of shade, 15" wide  
3 standard base bulbs



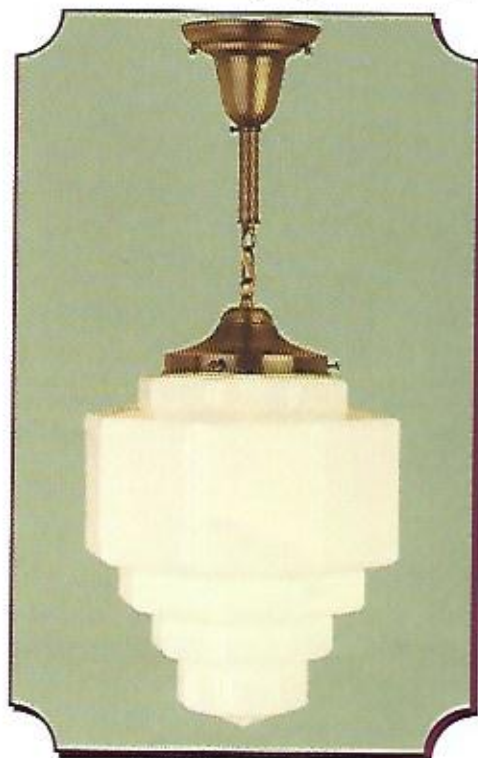
3

REPRODUCTION ART DECO SOLID BRASS PENDANT  
FIXTURES WITH BLOWN OPAL GLASS FROM  
ANTIQUÉ MOLD STYLE CIRCA 1930.

SHOWN IN ANTIQUE BRASS (AB) ALSO AVAILABLE IN POLISHED BRASS (PB) AND NICKEL (N)



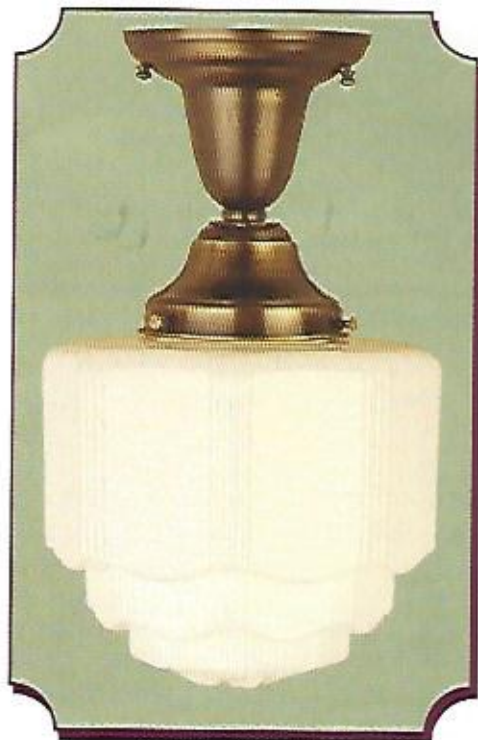
516H Antique Brass  
10" wide, 30-1/2" long  
1 standard base bulb



9012H Antique Brass  
12" wide, 25-1/2" long  
1 standard base bulb



509C Antique Brass  
8-1/2" wide, 15" long  
1 standard base bulb



454C Antique Brass  
8-1/4" wide, 14-1/2" long  
1 standard base bulb



# WILLIAMSBURG TYPE CHANDELIERS

TRADITIONAL ELEGANCE MADE FROM SOLID BRASS

AVAILABLE IN POLISHED BRASS, ANTIQUE BRASS OR PEWTER FINISH LACQUERED



729-30 Antique Brass



729-30 Antique Brass

729-30 14" wide, 13" high,  
3 candle bulbs, 7" chain

731 16" wide, 13" high,  
5 candle bulbs, 14" chain

731D 16" wide, 13" high,  
5 candle bulbs,  
1 standard base downlight bulb,  
14" chain



731 Polished Brass



731D Polished Brass

732 24" wide, 19" high,  
5 candle bulbs, 17" chain

736 24" wide, 19" high,  
6 candle bulbs, 33" chain

736D 24" wide, 19" high,  
6 candle bulbs,  
1 standard base downlight bulb,  
23" chain



738 Antique Brass



738D Antique Brass

738 28" wide, 21" high,  
8 candle bulbs, 21" chain

738D 28" wide, 21" high,  
8 candle bulbs,  
1 standard base downlight bulb,  
21" chain



741 Polished Brass



742 Polished Brass

741 22" wide, 21" high,  
10 candle bulbs, 21" chain

742 27" wide, 23" high,  
12 candle bulbs, 23" chain

All models available with Clear Hurricane globes,  
add "G" to number, or Beige Shirred Shantung  
shades, add "S" to number.

## LANTERN POSTS

Western Red Cedar Posts are available in two sizes above ground, 72" or 90". They are furnished with a 24" PVC pipe insert which goes into the ground. This unique feature prevents the wood from rotting in the ground. Cedar is also a dimensionally stable wood that stays straight. Properly finished and maintained, Western Red Cedar Posts age gracefully and endure for many years. Posts can be left natural and will turn a silver gray in about 18 months. Posts can also be painted using a primer first. Cabot's Weathering Stain can also be used. All posts have 3" fitters. See price sheet for additional metal posts.



WC107FS Fluted - 90    WC101 - 72 Turned - 90    WC100-72 Lamb's Tongue - 90



WC107FS Shown with 622P AB    WC101 Shown with 826PC AC    WC100-72 Shown with 312PC AC

### FINISHES



AC - Antique Copper



AB - Antique Brass



PB - Polished Brass



OB - Olde Brass



VG - Verde Green



BL - Black



PT - Pewter

Antique Copper and Antique Brass - Solid copper and brass that is oxidized, hand rubbed, and clear lacquered, made to transform naturally under outdoor exposure. Available without lacquer upon request. Also available, not shown, NC - Natural Copper and NB - Natural Brass, not lacquered.

Polished Brass - Williamsburg style chandeliers are highly polished and lacquered to prevent tarnishing. No maintenance is required. The New Bedford Onion Lantern series is available in a hand polished brass, not lacquered. Treat it as you would your finest silver. Polished Brass is not recommended for outdoor use unless it is going to be well maintained.

Olde Brass - Ye Olde Purist's dream...Solid Brass, oxidized, lacquered and left in it's natural, pearly charcoal state. Each piece aging to it's own charming degree.

Verde Green - A green patina chemically applied to brass or copper.

Black - A strong durable coat of weather-proof paint applied to brass or copper.

Pewter - Made from solid brass or copper, pewter plated, satined, and lacquered. No maintenance required.

Chrome or Nickel finishes are available.

### GLASS OPTIONS



White Iridescent



White Opal Translucent



Frosted Seedy



Clear Seedy



Clear Hammered



Bone Beige



Amber Hammered



# NEWSTAMP LIGHTING

Corporation

*Established 1939*



*227 Bay Road*

*P.O. Box 189*

*North Easton, MA. 02356*

*Tel: 508.238.7071*

*Fax: 508.230.8312*

*email: [info@newstamplighting.com](mailto:info@newstamplighting.com)*

*web address: [www.newstamplighting.com](http://www.newstamplighting.com)*