

Pacific Pride

Taking Pride In Providing You The Perfect Door



Exterior / Interior / Barn Doors



Welcome To Our Product Catalog

The important word in our name, Pacific Pride Doors, is the word PRIDE. We take pride in our workmanship, pride in bringing beauty into your home, and great pride in the quality and value we offer in our door line. Our customers realize these virtues in our product and that is why they chose Pacific Pride Doors.

Pacific Pride employees represent over 75 years of experience in building, designing and engineering wood doors to exacting tolerances. Always setting trends in design and use, Pacific Pride continues to innovate. Constantly striving to make things easier for customers and giving complete solutions is our goal.

Whether it be a Knotty Alder, Mahogany, White Prefinished/Primed, or architectural designs, Pacific Pride has a solution for your home that you can take great PRIDE in for your family.

Thank you for letting us into your homes and being a part of your future memories.

John Horton



1 Exterior Doors

- Exterior Door Products 4
- Door Construction..... 6
- Unfinished Slabs..... 8
- Glass and Wood Details 9
- Builder Series 10
- Cottage Series..... 12
- Premium Series..... 14

2 Interior Doors

- Interior Doors..... 18
- Swinging Interior Doors 19
- Reversible Jamb System..... 22

3 Barn Doors

- Single Barn Doors 24
- Bi-Parting Barn Doors..... 27
- Bypass Barn Doors..... 28
- Barn Door Hardware
& Components..... 30
- Barn Door In a Box..... 32

Exterior Doors



EM30CR shown

Our Exterior Door Products

With more than 75 cumulative years of experience building, designing, and engineering wood doors, Pacific Pride Building Products knows wood doors! The insistence of exact tolerances, the moisture level of all wood components, and the hand selection of each piece of wood that go into our wood doors ensure the absolute best quality and outstanding value in the marketplace today.

All our doors are prefinished with a 9-step oil-based polyurethane process at the factory, allowing us to finish all edges of the panels before the assembly of the doors. This process is extremely important for the long life of the doors and minimizing any panel issues. Your front door makes a statement. So it's important to choose one that's not only beautiful but reflects your style as well. Pacific Pride brings you the perfect balance of style, quality, and value with hardwood Premium.

Standard Features

Engineered to maintain both their appearance and integrity, Pacific Pride doors provide the complete exterior entry solution. All configurations come pre-hung in a system that ensures unit integrity, ease of installation and happy homeowners. With four distinct lines - Craftsman, Contemporary, Traditional and Rustic - customers are sure to find a door to fit their style. Builders, and Cottage series doors that both elevate and enhance any facade. Choose Pacific Pride for a smart investment that will fit your needs, your home, and your life.



EM55R shown

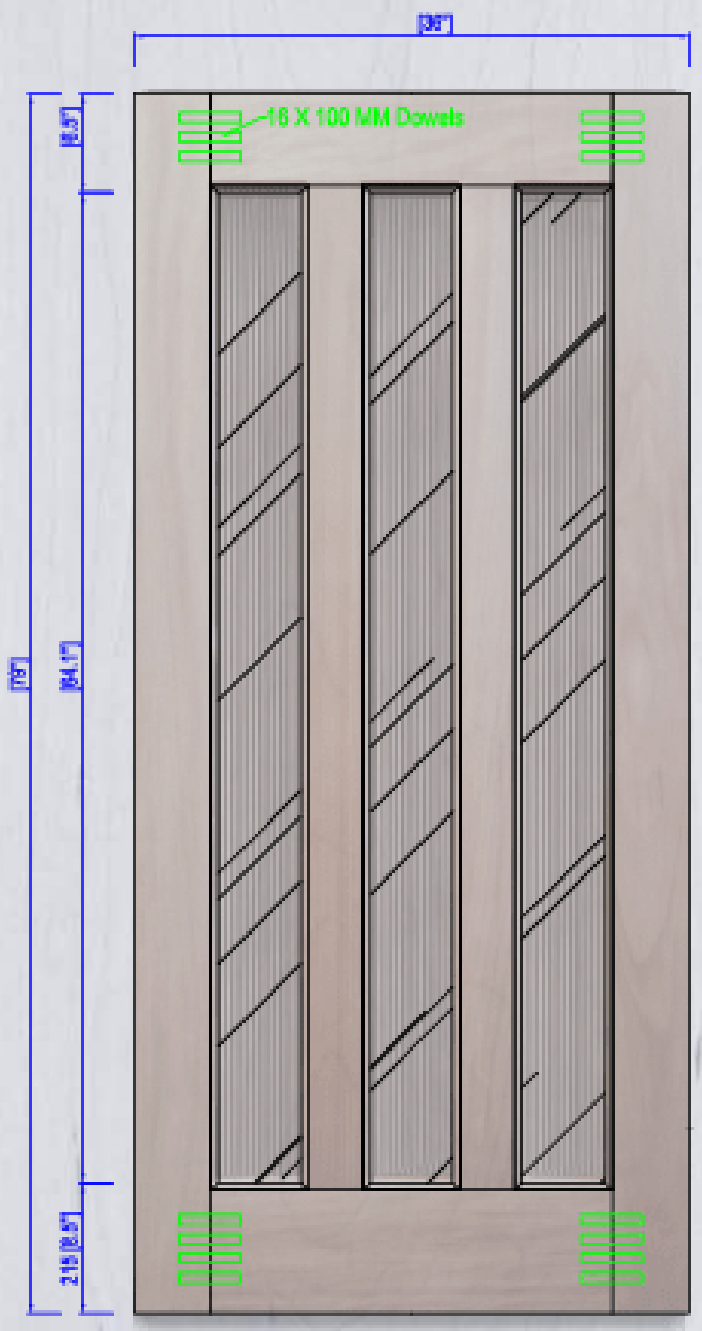
More Special Benefits

- Adjustable Sill
- Bronze aluminum/composite threshold
- Sweeps are bronze colored vinyl
- Stiles and rails are solid wood veneers and solid fingerjoint core
- 4-9/16" jambs with bronze weatherstripping

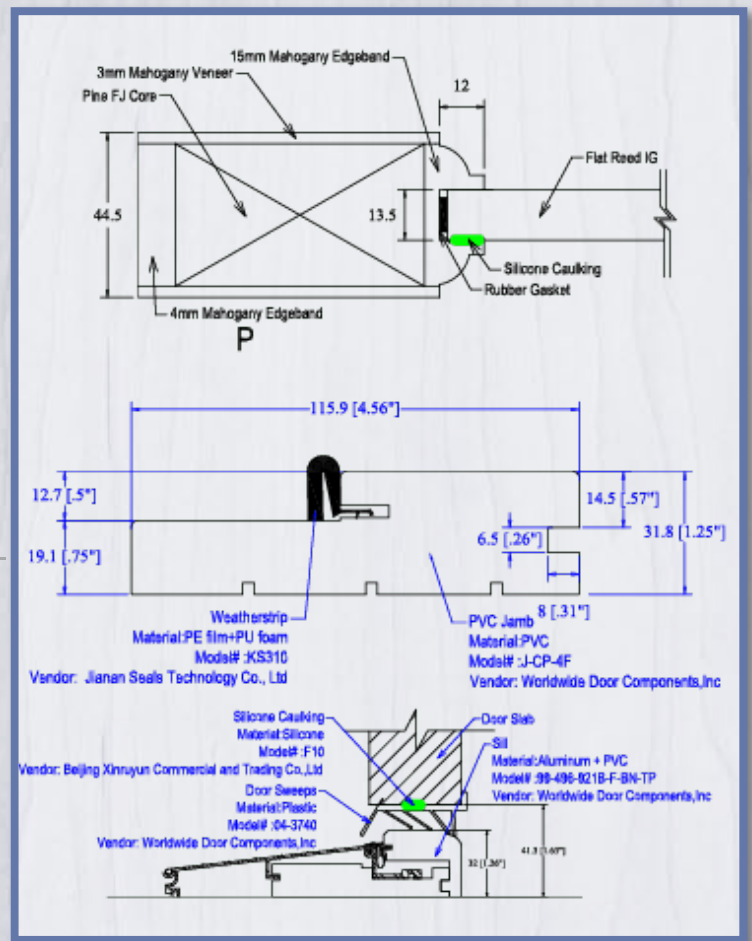
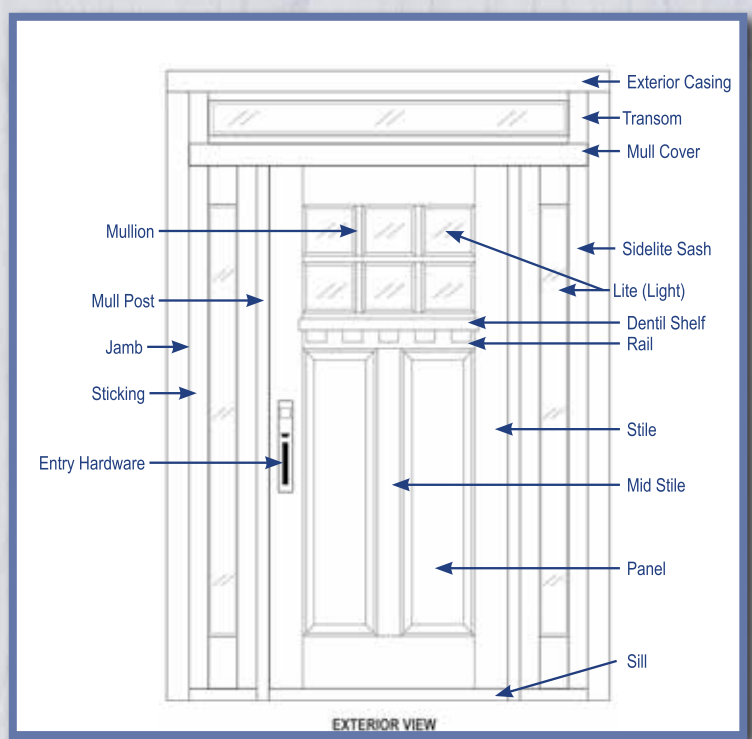
Standard Door Unit Dimensions			
Units	Nominal	6'8"	
		Actual	R.O.
Single	36" x 80"	37 3/4" x 81 1/2"	38" x 82"
With (1) 12" Sidelite	50" x 80"	51 1/2" x 81 1/2"	52" x 82"
With (1) 14" Sidelite	52" x 80"	53 1/2" x 81 1/2"	54" x 82"
With (2) 12" Sidelites	65" x 80"	65 1/16" x 81 1/2"	66" x 82"
With (2) 14" Sidelites	69" x 80"	69 1/16" x 81 1/2"	70" x 82"
With (2) 14" Sidelites and transom	69" x 98"	69 1/16" x 97 1/8"	70" x 97 5/8"
Cottage Door Unit Dimensions			
Single	42" x 80"	43 3/4" x 81 1/2"	44" x 82"
With (2) 9" Sidelite	60" x 80"	65" x 81 1/2"	66" x 82"
With (2) 11" Sidelites	64" x 80"	69" x 81 1/2"	70" x 82"
With (2) 11" Sidelites and transom	64" x 105 1/2"	69 x 105 1/2"	70" x 106"

**Some features may not be available on all models. Ask your sales representative for specific details.*

Anatomy of Door/Frame



Stile and Rail



What Do Structural, or Design Pressure, Ratings Mean?

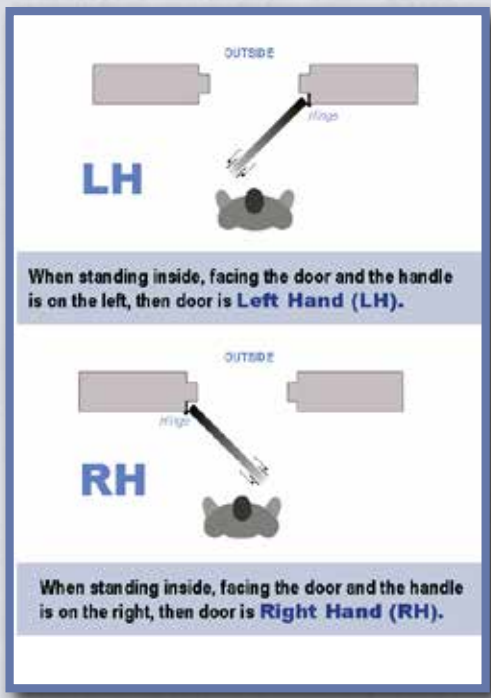
TP is a performance specification for how strong a door is, expressed in how many pounds per square foot (psf) of pressure it can withstand. This specification can fluctuate based on several factors, such as geographic location, the height of the building, the location of the door in relation to the building, etc. All of these factors are used to calculate what the Design Pressure (DP) is for a specific door.

During testing, a door is attached to a wooden frame and clamped to a specially designed wall. Air pressure is gradually reduced on the inside of the door, which increases the pressure on the outside until the window fails (breaks beyond repair). The test pressure must reach 1.5 times the design pressure for 10 seconds without the door suffering permanent damage. In other words, a door with a Class / DP of 30 would have to withstand 45 psf. The instant the door fails, the psf is recorded and is used for the calculation.

Laboratories will then issue labels that indicate the DP for the door – labels used by the Window and Door Manufacturers Association (WDMA), the American Architectural Manufacturers Association (AAMA), and other organizations.

CLASS/DESIGN PRESSURE IN PSF (INCHES OF WATER)	CLASS/DESIGN PRESSURE EQUIVALENT WIND VELOCITY IN MPH	STRUCTURAL TEST PRESSURE EQUIVALENT WIND VELOCITY IN MPH
15 (2.88)	77.52	94.94
20 (3.84)	89.51	109.63
25 (4.80)	100.08	122.57
30 (5.76)	109.63	134.27
35 (6.72)	118.42	145.03
40 (7.68)	126.59	155.04
45 (8.64)	134.27	164.45
50 (9.60)	141.53	173.34
55 (10.56)	148.44	181.8

See your local county building planner to see what DP rating is best for your area. Pacific Pride will not provide regional information for DP ratings.



Door Handing

So Easy a Caveman Can Do It



This begs the question – “how do you determine the handing of a door”? There are two simple tricks you can use to do it yourself.

Door Handing Trick #1

Stand inside of the room you want to secure and grab the handle. Whichever hand you grab the handle with will help you determine the handing of the door.

Door Handing Trick #2

Stand in the doorway with your back against the hinge and point your arm in the direction the door swings.



UM55MSS
Unfinished Mahogany 5-lite w/Mislite tempered IG glass



UM26S
Unfinished Mahogany 6-lite w/tempered IG glass



UM88MSS
Unfinished Mahogany 8-lite slab w/Mislite tempered IG glass



UM30RDS
Unfinished Mahogany vertical 3-lite w/Reed tempered IG glass



UM14FLS
Unfinished Mahogany 4-lite w/tempered Flemish glass



UM73HDS
Unfinished Mahogany vertical 3-lite slab with Deco glass

Alder

Glaze Highlight Detail

V-Groove
Iron Clavo

Alder Wood (A42 & A51 units)

Operable Speakeasy

Mahogany

Ash (AM)		Pecan (PM)
Espresso (EM)		Unfinished (UM)

Clear Bevel Glass

Narrow Reed Glass

Mislite Glass

Flemish Glass

Builder Series



Series Features

- TDI Rated / DP 50
- Design pressure rating of 50 PSF*
- Tested to handle hurricane winds of 173 mph
- Available in both 4-9/16" and 6-9/16" Jambs
- High-performance compression weather-stripping resists rot and corrosion while sealing out the weather elements
- Adjustable Composite Bronze Sill
- Oil rubbed bronze ball bearing hinges provide years of easy swing
- Composite Jambs
- 2-3/8" backset, 5-1/2" DB on center

* WA51 has a pressure rating of 45 PSF

Rough Opening: 82"
81 1/2"



AM30C(L/R)
Ash Mahogany
3 Lite with Reed Glass

EM30C(L/R)
Espresso Mahogany
3 Lite with Reed Glass

AM26C(L/R)
Ash Mahogany
Clear I/G Glass

EM26C(L/R)
Espresso Mahogany
Clear I/G Glass

PM26C(L/R)
Pecan Mahogany
Clear I/G Glass



GA23C (L/R)
Golden Oak Alder
Clear I/G Glass

AA23C(L/R)
Ash Alder
Clear I/G Glass

EM23C(L/R)
Espresso Mahogany
Clear I/G Glass

PM23C(L/R)
Pecan Mahogany
Clear I/G Glass



AM73C(L/R)
Ash Mahogany
Triple Pane Deco Glass

EM73C(L/R)
Espresso Mahogany
Triple Pane Deco Glass

PM73C(L/R)
Pecan Mahogany
Triple Pane Deco Glass

WA51C(L/R)
Espresso Alder
Iron Speak Easy & Clavos

GA24C(L/R)
Golden Oak Alder
Beveled I/G Glass

Cottage Series



W28-409R shown

For those who like the room to walk through their entrance, the widebody gives you a wide door that fits in standard openings. Great for moving in furniture or allowing plenty of room for a wheelchair.

Frame Features

- Closed cellular structure
- Rigid poly-fiber formulation
- 2x Screw holding power
- Will not absorb moisture
- Stronger than wood door frames

Series Features

- TDI Rated / DP 50
- Design pressure rating of 50
- Tested to handle hurricane winds of 173 mph
- Our cottage series models comes in prefinished white and features the 4ever frame composite jamb system and composite brick mould

W28
9" side lites

Rough Opening: 66"

9" 42" - Total width: 65" 9"

Rough Opening: 82"
81-1/2"



Model Numbers:
W28-409R
W28-409L

W28 11" Side Lites

W28 with 11" Side Lites and 24" Transom
(Transom available for 11" Side Lites only)

Rough Opening: 70"

11" 42" - Total width: 69" 11"



Model Numbers:
W28-411R • W28-411L

Rough Opening: 70"

11" 42" - Total width: 69" 11"



Model Numbers:
W28-411R-TR • W28-411L-TR

Rough Opening: 82"
81-1/2"

24"
Rough Opening: 106"
81-1/2"

NEW! Dutch Door



EM26DL Shown

W28DR

Rough Opening: 44"
Actual: 43-3/4"



Model Numbers:
W28DR • W28DL

Model Numbers:
W26DR • W26DL

Rough Opening: 82"
81-1/2"

Available
Sizes:
36" or 42"

EM26DL
Rough Opening: 38"
Actual: 37-3/4"





EM55MS – 5-Lite
Mistlite Mahogany
Door with the
EM60MSMT Site
Lites (Shown in
espresso finish)

Series Features

- Factory pre-hung/pre-finished (with oil base polyurethane)
- Matching 4-9/16" ext, jambs
- Weatherstrip
- 4" Ball Bearing Hinges
- Adjustable Bronze Sill
- 2-3/8" Backset
- 5-1/2" DB on center
- Optional 6-9/16" extension kit and dentil shelves



GA36 6-Lite

6-Lite with Sidelites and Transom
with Clear Bevel Glass
GA36 (L/R)(412/413)
Sidelites (12" or 14")



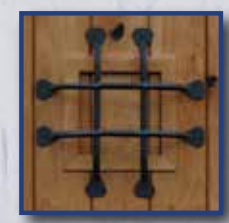
6-Lite, 3-Panel
Available Glass:
Clear Bevel
Available Options:
Dentil Shelf

GA42

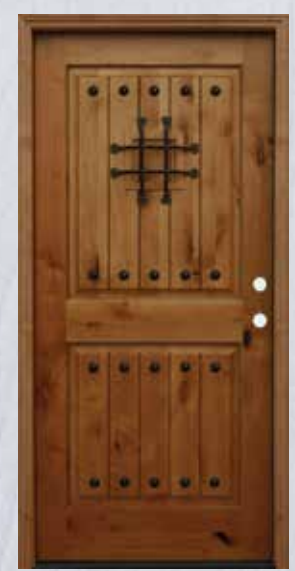
2-Panel Speakeasy with
Clear Bevel Glass Sidelites
Sidelites shown with
optional Iron Grilles
GA42 (L/R) (412/413)
Sidelites (12" or 14")



2-Panel Speakeasy
with Iron Grille
(L/R)
Available Glass:
Clear



Operable
Speakeasy





GA21HS

2-Panel 1/4-Lite with Dentil Shelf
GA21HS (L/R)
Available Glass:
Decorative
Available Options:
Dentil Shelf



EM55 5-LITE

5-Lite Espresso Mahogany
with Sidelites and Transom
with Mistlite glass
EM55MSM (L/R)
(12" or 14")
Available Glass:
Mistlite - MS



Ash Mahogany
AM55MSM(L/R)

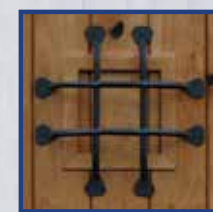


GA51

2-Panel Arched Speakeasy with Sidelites
with optional Iron Grilles
GA51 (L/R) (412/413)
(12" or 14")
Available Glass:
Clear Bevel



GA51 (L/R)
2-Panel Arched
Speakeasy Door
with Iron Grille



Operable
Speakeasy

RM36 6-Lite

6-Lite with Sidelites and Transom
With Clear Bevel Glass
RM36M (L/R) (412/413)
(12" or 14")
Available Glass:
Clear Bevel



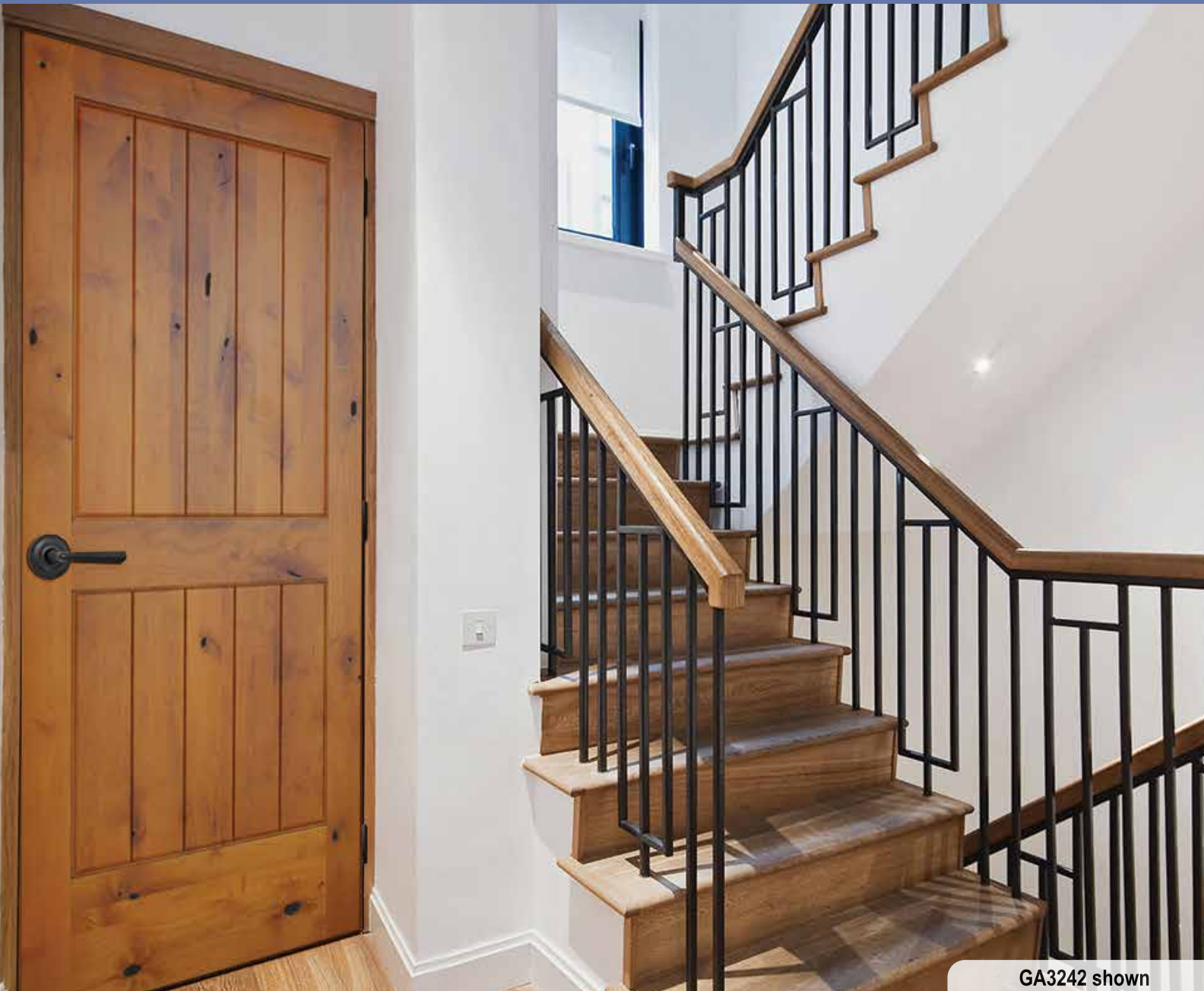
RM36(L/R)
6-Lite, 3 Panel

Interior Doors

Swinging Interior Doors



UA3242 shown



GA3242 shown

Redesign Your Home with Pacific Pride



When renovating her Chicago home, Michelle Renard, author of popular home decor and interior design blog Hello Lovely, selected our Knotty Alder interior doors to install throughout the house. Michelle paired the rustic look of our Knotty Alder doors with white and gray finishes, accents of tan burlap, and pastel accessories to complete the look. The results are stunning!

Series Features

- Your choice of Unfinished Knotty Alder, White Primed Pine or Unfinished Vertical Grain Douglas Fir. Prehungs can come with either Oil Rubbed Bronze or Satin Nickel hinges.
- Reversible jamb kits that allow handing to be determined at installation. Choice of slab (no frame) or prehung (shipped knocked down, ready to assemble)
- 1-3/8" thick slabs
- 2-3/8" backset single bore
- All interior doors available as double doors



Model: UA2210



UA2210
Alder



BFUA2210
Alder
Bifold



UA2220
Alder



BFUA2220
Alder
Bifold



UA2235
Alder



BFUA2235
Alder
Bifold



UA2242
Alder



GA2242
Alder
Golden Oak



Model: BFA2235



Model: P2250



UF2235
Fir



BFUF2235
Fir
Bifold



UF2250
Fir



BFUF2250
Fir
Bifold



UF2210
Fir



BFUF2210
Fir
Bifold



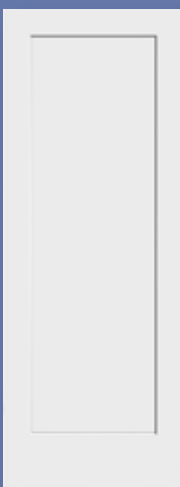
UF2220
Fir



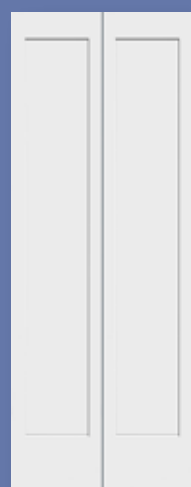
BFUF2220
Fir
Bifold



Model: UF2220



P2210
Primed



BFP2210
Prime
Bifold



P2220
Primed



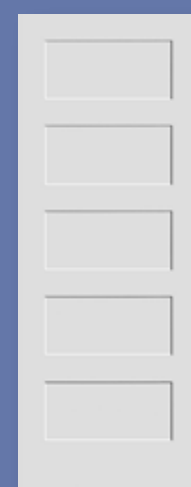
BFP2220
Primed
Bifold



P2235
Primed



BFP2235
Primed
Bifold



P2250
Primed



P2320
Primed



P2044
Primed



CDR2044
Prefinished
w/Clearcoat

Available sizes: 18", 24", 28", 30", 32", 36"

Available in 30" - 36" Only



Jamb Stops
Jamb stops are shipped loose so they can be applied after installing frame for a cleaner, stronger system.



Hinge Prep
Machined both sides so that hinge jambs can be switched with strike jambs to reverse handing.

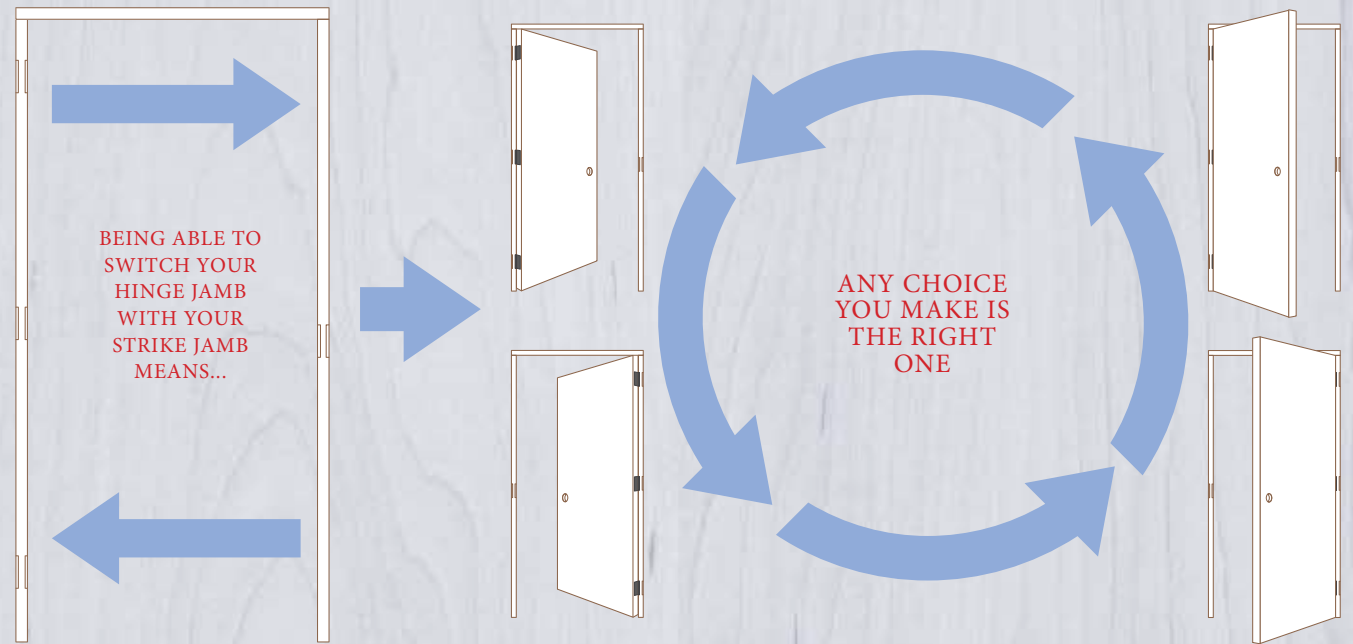


Hinges
Engineered with one radius flange and one square edge flange so hinges can be flipped to accommodate either hand.



Strike Prep
Machined both sides so that hinge jambs can be switched with strike jambs to reverse handing.

- **No More Handing “Oops”**
Never worry about LH or RH mistakes again.
- **A Stronger, Cleaner System**
Installing frame through the jamb stop channel allows for installation adjustments and no nail or screw holes to repair or putty.
- **Less Damage**
Reducing inventory means less space required, less handling needed and ultimately less damage caused.



Pacific Pride doors introduces a patented, revolutionary design with the Patented Reversible Jamb System. Created so that handing does not have to be determined until installation, the Reversible Jamb System benefits every step of the supply chain; from distributors and retailers who can reduce inventory without sacrificing selection, to installers and DIY customers who can ensure job completion through flexible reversible handing.



Unfinished Alder Wood



Unfinished Douglas Fir



Primed White Pine

Single Barn Doors

1. Select A Design



CDR2044 shown

Pacific Pride Barn Doors are beautiful, functional, and add a unique flair to your home. You can purchase a single barn door to add style to a room, or purchase two of the same door to create a bi-parting or bypass setup in your space.

Our White Primed doors come ready to paint making it easy to match the decor of any room. Every Rustic Alder door can be ordered unfinished, allowing customers the opportunity to apply a stain that best suits their home. Our barn doors can be coordinated with our swinging interior doors throughout your home to add a dramatic focal point.

Pacific Pride has many options to ensure that choosing the right door is simple and satisfying. Using our easy two step process, we can help you select the perfect solution to all your door needs.

Rustic Alder or Pine-Unfinished

Architectural with Mislite Tempered Glass



CDR2044
.....
Prefinished/
Clearcoat
30" x 84"
36" x 84"

P2044
.....
Primed
30" x 84"
36" x 84"

Primed Pine



P2320
.....
Wide Louver
36" x 84"

P3220
.....
36" x 84"
42" x 84"

Rustic Alder - Golden Oak Finish



GA3242
.....
Rustic Alder
36" x 84"

GA3242LS
.....
Rustic Alder
36" x 84"

GA3242RS
.....
Rustic Alder
36" x 84"

Rustic Alder - Unfinished



UA3242
.....
Rustic Alder
36" x 84"
42" x 84"

UA3242LS
.....
Rustic Alder
36" x 84"
42" x 84"

UA3242RS
.....
Rustic Alder
36" x 84"
42" x 84"

Unfinished Pine UP2500

.....
Rustic Alder
36" x 84"
42" x 84"
Thickness
1-3/8"



2. Select Your Hardware

At Pacific Pride, we like choices. That's why we offer two different styles of hardware for our stunning barn doors. Customers can choose between our oil rubbed bronze flat track or stainless steel flat track to fit their exact door needs.

All our standard tracks are 80 inches long drilled on 16-inch centers. Each track is offered in multiple sizes, allowing you to choose the track that best fits your room opening.

Flat Tracks



BDH01

Bronze

Lengths:
48" 64" 80" 84"



BDH02

Stainless Steel

Lengths:
48" 64" 80" 84"



Round Track



BDH03

Stainless Steel

Lengths:
48" 64" 80" 84"

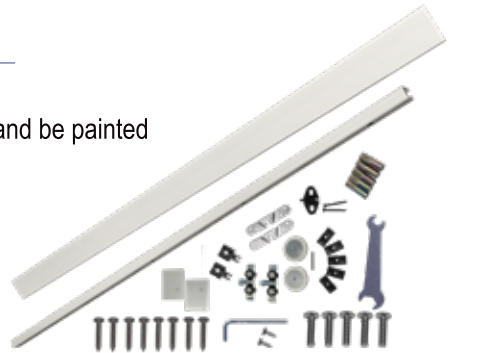


Valance



BDH05

Shown in Brushed Nickel
Can be trimmed up to 30" and be painted



Bi-Parting Barn Doors



BPP3150 shown

Series Features

A beautiful way to enhance your dining, study, kitchen or bedroom areas, bi-part barn doors provide an elegant transition between spaces. All of our single barn doors can be purchased as a set of bi-part doors and are built for long lasting beauty and durability.

Both our stainless steel and oil rubbed bronze flat track hardware sets are available for double door installation. Add the Track Connector option to connect two tracks when longer travel is needed. Multiple handle choices are available in addition to the Soft Closer option to create a one of a kind set up.

Bypass Barn Doors



Oil Rubbed Bronze Bypass System Shown



GA3242 shown

Series Features

Bypass double door hardware allows the ability to dress up closets with the beauty of barn doors. Hardware adapts to both 1-3/8 in. or 1-3/4 in. thickness doors and has a quality oil rubbed bronze powder or stainless steel coat finish. With easy to follow installation instructions, mounting is quick and easy to add class to any closet.

Oil rubbed Bronze Bypass Hardware

Stainless Steel Bypass Hardware Kit

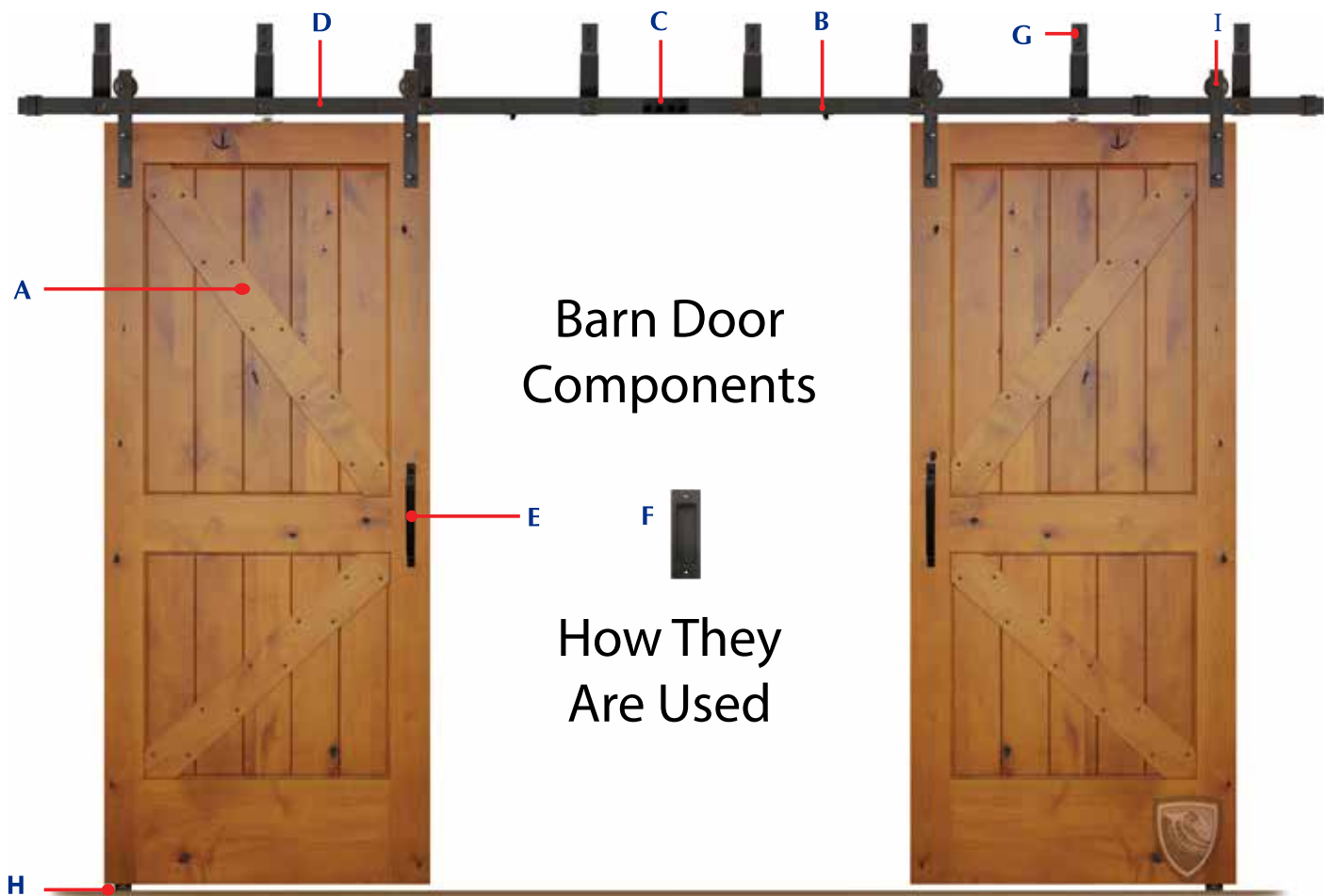


BDHKIT0410B
BDHKIT0510B



(4') BDHKIT0415SS
(5') BDHKIT0515SS

Barn Door Hardware & Components



Barn Door Components

How They Are Used

- A Alder Door Straps** Add diagonal elements to barn doors. Available in prefinished and unfinished.
- B Soft Closers** Cushion and slow the roll of barn doors when closing.
- C Track Connector** Connects two tracks when longer travel is needed. Available in bronze & stainless steel.
- D Track** Component that the barn doors use to roll on. Available in bronze in various lengths.
- E Oil Rubbed Bronze Pull Handle** To help open and close your barn door.
- F Flush Pull Handle** To help open and close your barn door.
- G Bypass Brackets** Allow doors to pass by each other. Available in bronze & stainless steel.
- H Wall Guide** Replaces t-guide for hardwood or tile floors. Available in bronze and stainless steel.
- I Hangar** Mounted on track for left to right barn door movement. Available in black, bronze and stainless steel, as a J-Hook (pictured) or top mounted.



- D Wall Guide Bronze**
order code: LWALL10B
Stainless Steel
order code: LWALL15
- E Privacy Lock Bronze**
order code: BDHPDL10B
Stainless Steel
order code: BDHPDLSS
- F Hardware Set**
Bronze
order code: BDH01
Stainless Steel
order code: BDH02
Stainless Steel Round Rail
order code: BDH03
Black Top Mounted*
order code: BDH04
Bronze Bypass Kit*
4' order code: BDHKIT0410B
5' order code: BDHKIT0510B
Stainless Steel Bypass Kit*
4' order code: BDHKIT0415SS
5' order code: BDHKIT0515SS
- G Bypass Brackets**
Bronze
order code: BDBPR10B
Stainless Steel
order code: BDBPR15
- H Iron Pull Handle**
order code: BHANDLE-10B
- I Stainless Steel Pull Handle**
order code: SSHANDLE

- A Alder Door Straps**
Prefinished
order code: GAstrap
Unfinished
order code: UAstrap
- B Soft Closer (pair)**
Dark
order code: QCLOSERKIT-10B
Light
order code: QCLOSERKIT-15
- C Track Connector**
Bronze
order code: BDHRCB
Stainless Steel
order code: BDHRCS



*Shown on Page 26

- J Stainless Steel Flush Handle**
order code: FHANDLE-SS
- K Bronze Flush Handle**
order code: FHANDLE-BL
- L Surface Pull Handle-Black**
order code: FHHANDLE-10B
- M Surface Pull Handle-Stainless**
order code: FHHANDLE-15
- N Barn Door Valance**
order code: BDH05



Barn Door In a Box

Complete Barn Door Kit

Pacific Pride's unique Barn Door in a Box is extremely versatile. By assembling the Barn Door in a Box yourself, you determine the orientation of the knots. That means each customer gets to be the artist in creating their own one of a kind, custom barn door. If you have a shorter door opening or a custom application, you can cut each plank down in height to fit that application. The possibilities with this door are endless!

UP2100 shown



UP2100 Radiata Pine Unfinished

Outside Vertical Planks: 6"
Inside Vertical Planks: 4"
Thickness: 1-3/8"



UA3100 Alder Unfinished

All Vertical Planks: 6"
Thickness: 1-3/4"

Kit includes
this hardware



BDH01 Shown

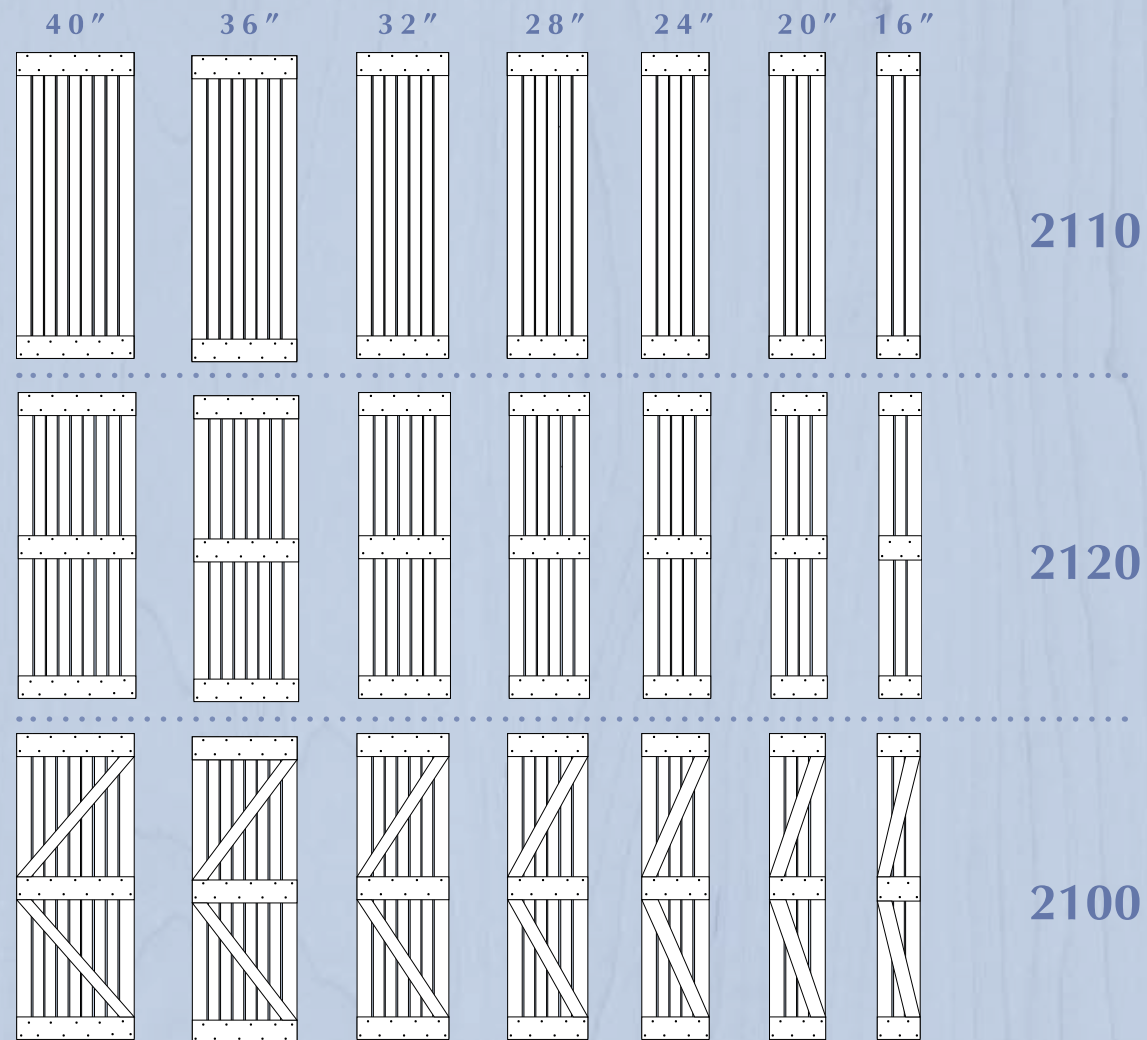
Barn door
in a box



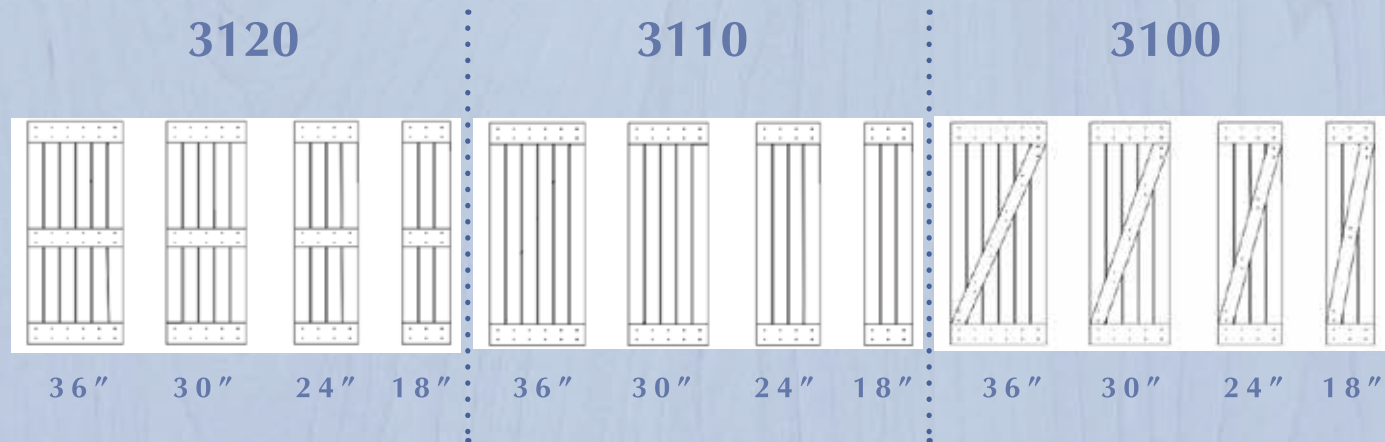
Ready To Assemble

- Unfinished Radiata Pine or Alder
- Stain or paint to match your decor
- Pre-drilled holes and prepped for ease of door assembly and hardware installation
- Doors and hardware designed to ensure smooth fit and function
- 1-3/4" and 1-3/8" thicknesses (see individual unit specifications)

Possible Pine Configurations



Possible Alder Configurations



UA3100 shown



W28-411R shown

Pacific Pride

3480 W. Valley Hwy., E.
Sumner, WA 98390
(253) 258-8563

© 2023 Pacific Crest Building Products. Pacific Pride reserves the right to make changes in design, materials and specifications as well as discontinue products without notice. 01/15/23

PacificPrideDoors.com