

For your child's safety and health

The Yoomi warming cone works using a safe, non-toxic salt solution. We've colored it with blue, food grade dye so its easy to spot should the warming cone be compromised. If you suspect your child has swallowed the salt solution, seek the advice of a health care practitioner. If you touch the solution, just wash your hands.

WARNING!

- Always use Yoomi products with adult supervision.
- Never use feeding nipples as a soother. Continuous and prolonged sucking of fluids causes tooth decay.
- Before first use clean all parts by placing in boiling water for 5 minutes.
- Always check milk temperature before feeding.
- Keep all products not in use out of the reach of children.

Taking care of your Yoomi products

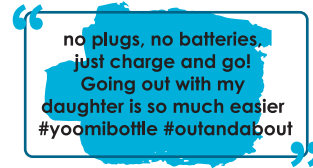
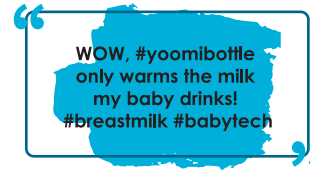
Here are a few tips to keep your Yoomi products in top condition.

- Before each subsequent use, clean and sterilize all Yoomi parts.
- Inspect the bottle, warming cone and nipple before each use. Pull the nipple in all directions and throw away at the first sign of damage or weakness. If the warming cone is damaged, discard the milk and replace the warming cone.
- A nipple brush will help thoroughly clean the nipples. We advise replacing the nipples every 2 or 3 months.
- Do not leave the nipples in direct sunlight, disinfectant or sterilizing solution for longer than recommended as this may weaken the nipple.
- You can wash Yoomi products in the dishwasher but food colorings may discolour parts.
- The warming cone needs to be recharged in the Easy Charger Plus station or in a pot of boiling water after each use.
- Never microwave your warming cone.
- Give your warming cone a rest after recharging for 75 minutes. If you try to activate it too soon, you will damage it.
- It's time for a new warming cone when:
 - The button stops changing color when you press it
 - You spot signs of damage or blue safety dye
- Never warm milk in a microwave as it can cause uneven heating 'hotspots' and could scald your baby.
- If you're making up formula feeds, always follow the formula manufacturers' instructions and use the milk within two hours, then discard.
- Keep Yoomi away from solvents and harsh chemicals.
- Yoomi is not a toy.

Visit www.yoomi.com for more information on Yoomi products. For customer queries, contact us at hello@yoomi.com

Unit 1, Avery Way, Questor Estate, Dartford DA1 1JZ, UK

Mom knows best #yoomibottle #tips



Contents:



Spill-proof cap



nipple



collar



reusable warming cone



bottle

'just right' temperature

Overheating milk with hot water or a microwave can destroy the nutrients in your baby's milk, so we designed Yoomi to warm milk to the natural temperature of breast milk of around 32 to 34°C.

Breast milk is a little cooler than body temperature so the milk from your Yoomi should feel slightly cooler, just like mom.

Flight approved



Our warming cone contains less than 100ml of a water/salt solution and so should be permitted on flights and can be placed in your checked baggage.

Also available from Yoomi:

- Starter Sets - 5oz/8oz bottles,
- Reusable Warming Cones
- Easy Charger Plus Station
- 4 Nipple Flow Rates - Super Slow, Slow, Medium & Fast
- Breast Aid Restoration Pads
- Electric 3 in 1 Breast Pump
- Electric Steam Steriliser



EN14350

10019/ENBW13

Yoomi makes the parental journey safe, convenient and affordable by infusing technology into Mother and Baby care products

Our Feeding Made Easy System was developed to make your parental journey a positive experience while easily integrating into your cleaning and bottle preparation routine.

At the heart of our system is our patented reusable warming cone that allows you to warm your baby's milk to the perfect temperature in just 60 seconds at the touch of a button.

All Yoomi bottles are BPA-free and have a super-soft silicone anti-colic nipple for proper latch-on, creating a comforting feeding experience that is perfect for bottle feeding, combination feeding or transitioning your baby from breast to bottle.

Read these instructions carefully to get the most from your Yoomi products

yoomi 
Parental Journey Innovations®

The 3S difference

- **Speed**
Perfect temperature in just 60 seconds
- **Safety**
Protects 100% of the nutrients
- **Savings**
Only warms the milk your baby drinks



using your bottle on its own

You'll need to wash and sterilize your bottle and nipple before you feed your baby.

1

Give your bottle a wash in warm, soapy water using a nipple brush for the nipple. Or place all the parts in your dishwasher.

2

Sterilize your bottle and nipples using any sterilization method. Just follow the recommended steps in the sterilizer manufacturer's instructions.

3

When using the bottle on its own; Fill the bottle with milk, pull the nipple through the collar and screw onto the bottle.

Feed away!



Do not overtighten the collar. Leave a small gap between collar & bottle.

recharging your reusable warming cone

You'll need to clean and recharge your warming cone after each feed.

You can check your warming cone is fully recharged by giving it a shake. It will rattle.

No rattle? Sounds slushy? Then your warming cone needs to be recharged.

A

Using the Easy Charger Plus station

- Place the warming cones horizontally in the base of the reservoir.
- Add 200ml of water for 1-3 warming cones or 400ml for 4 warming cones
- Secure the lid. Press the function button 2 times to select the Sterilizing setting and manually adjust the time to 0.5 (30 minutes)
- After 30 minutes, remove and allow to cool
- Carefully read the Easy Charger Plus Manual for more details.

B

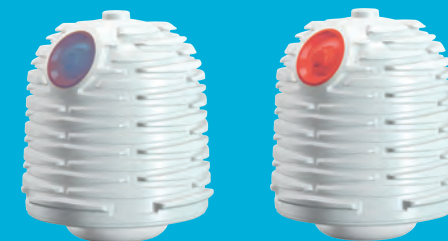
Boiling

- Place your warming cone on its side fully submerged in a pot of continuously boiling water
- Set a timer to boil for 30 minutes
- Remove and allow to cool
- You can charge and sterilize multiple warming cones at once

C

Cooling your warming cones

- Allow warming cones to cool completely prior to use
- Warming cones need 75 minutes at room temp or 20 minutes in cold water
- If you press the button too soon you could permanently damage your warming cone



After charging –
The button will be blue. Allow to cool & return to orange.

After cooling –
Shake the warming cone. It will rattle. The warming cone is charged & ready to go.

using your bottle and warming cone

Ensure your bottle, warming cone and nipple are clean and sterile before you feed your baby.

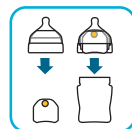
Ensure your warming cone is fully charged and cooled before each use. (see above)

1



Pop the collar over the nipple.

Then pick up the warming cone using the collar and screw onto the bottle.

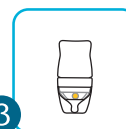


2

Firmly press the orange button through the nipple to start warming. After a few seconds, you'll feel warmth through the collar.

Wait 30 seconds.

3



Put the cap on the bottle and turn upside down so the milk runs over the ridges of the warming cone and into the nipple.

Wait 30 seconds and **feed away!**



Hold the bottle so the nipple is full of milk. The warming cone stays warm for up to an hour.