

# WARMING TRENDS®

## GAS INSERT KITS FOR PAVER FIRE PITS



Visit us online at [Warming-Trends.com](http://Warming-Trends.com) for more information and pricing or call **303-346-2224** to speak with one of our Flame Specialists today.

# WARMING TRENDS GAS INSERTS

---

Warming Trends® makes it easy to install or convert a paver fire pit to gas with our gas insert kits. Each kit includes the CROSSFIRE® Brass Burner which utilizes cutting-edge jet technology to produce a taller, brighter, and more natural flame – all while consuming less gas. Warming Trends® Universal and Specialized Gas Insert Kits are designed to work with a variety of paver company block kits, including everything needed to convert your paver fire pit.

## OPTIONAL IGNITION SYSTEMS

---

- Push Button Ignition (PBIK)
- Mercury Ignition (MERC)
- 3 Volt (3VIK)
- Standard 24V (24VIK)
- Platinum Automatic 24V Ignition

Light your Fire Feature with the simplicity of a match or choose a fully automatic ignition system.



## UNIVERSAL GAS INSERT KITS

---

Warming Trends Gas Inserts are designed to let you easily create a stunning fire feature in an existing or new paver block pit. Each kit includes everything needed to quickly and easily convert to a gas system.

### INCLUDED IN EACH KIT:

- CROSSFIRE® Brass Burner
- Aluminum Plate
- Flex Line Kit
- Key Valve Kit
- Collars



*CFB180 on Circular Plate*

Find out which Ignition System is compatible for your project.



# UNIVERSAL GAS INSERT KITS

## CIRCULAR OPENINGS

**23" - 26"  
Circular  
Opening**

**UPK120C23NG | UPK120C23LP**

CFB120 Original Brass Burner with WATERSTOP™  
23" Circular Aluminum Plate  
Flex Line/Key Valve Kit  
Key Valve Extension  
(4) Collars

**29" - 32"  
Circular  
Opening**

**UPK180C29NG | UPK180C29LP**

CFB180 Original Brass Burner with WATERSTOP  
29" Circular Aluminum Plate  
Flex Line/Key Valve Kit  
Key Valve Extension  
(5) Collars

**35" - 38"  
Circular  
Opening**

**UPK240C35NG | UPK240C35LP**

CFB240 Original Brass Burner with WATERSTOP  
35" Circular Aluminum Plate  
Flex Line/Key Valve Kit  
Key Valve Extension  
(6) Collars

**39" - 42"  
Circular  
Opening**

**UPK240C39NG | UPK240C39LP**

CFB240 Original Brass Burner with WATERSTOP  
39" Circular Aluminum Plate  
Flex Line/Key Valve Kit  
Key Valve Extension  
(7) Collars

## SQUARE OPENINGS

**23" - 26"  
Square  
Opening**

**UPK120S23NG | UPK120S23LP**

CFB120 Original Brass Burner with WATERSTOP  
23" Square Aluminum Plate  
Flex Line/Key Valve Kit  
Key Valve Extension  
(4) Collars

**26" - 29"  
Square  
Opening**

**UPK120S26NG | UPK120S26LP**

CFB120 Original Brass Burner with WATERSTOP  
26" Square Aluminum Plate  
Flex Line/Key Valve Kit  
Key Valve Extension  
(4) Collars

**29" - 32"  
Square  
Opening**

**UPK180S29NG | UPK180S29LP**

CFB180 Original Brass Burner with WATERSTOP  
29" Square Aluminum Plate  
Flex Line/Key Valve Kit  
Key Valve Extension  
(5) Collars

**35" - 38"  
Square  
Opening**

**UPK240S35NG | UPK240S35LP**

CFB240 Original Brass Burner with WATERSTOP  
35" Square Aluminum Plate  
Flex Line/Key Valve Kit  
Key Valve Extension  
(6) Collars

**39" - 42"  
Square  
Opening**

**UPK240S39NG | UPK240S39LP**

CFB240 Original Brass Burner with WATERSTOP  
39" Square Aluminum Plate  
Flex Line/Key Valve Kit  
Key Valve Extension  
(7) Collars



# SPECIALIZED GAS INSERT KITS

The All-New Specialized Gas Insert Kits fit top-selling paver fire pit brands and are easier to install than ever before! The Mounting Brackets and Collars have been re-engineered to eliminate the need for a drill to install. Each kit includes all components needed to create an exceptional fire feature including the patented CROSSFIRE™ burner, aluminum plate, no-drill collars, specifically sized vents, and mounting bracket which replace a block while still offering support to the blocks above and a Flex Line/ Key Valve Kit.

## SPECIALIZED GAS INSERT KITS INCLUDE:

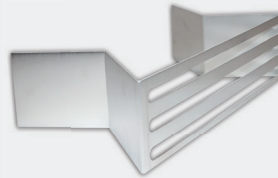
- CROSSFIRE® Brass Burner
- Aluminum Plate
- Specifically-sized Mounting Bracket and Vents
- Flexible, No Drill Collars
- Flex Line / Key Valve Kit



*Raffinato Block Kit and components pictured*



Flexible, No Drill Collars install between blocks.



Vents are sized perfectly to replace a block and support the block above.



Redesigned Mounting Bracket eliminates need to drill through block to mount Key Valve.

### Valencia Gas Insert

#### UPKVLLP | UPKVLNG

CFB180 Original Brass Burner with WATERSTOP™  
29" Circular Aluminum Plate  
Flex Line/Key Valve Kit  
9 1/4" x 3" Mounting Bracket  
(5) Flexible, No Drill Collars  
(2) 9 1/4" x 3" Vents

### Raffinato Gas Insert

#### UPKRRNG | UPKRRLP

CFBH160 H-Style Brass Burner with WATERSTOP  
32" x 17 3/4" Rectangular Aluminum Plate  
Flex Line/Key Valve Kit  
14" x 3 1/2" Mounting Bracket  
(5) Flexible, No Drill Collars  
(2) 14" x 3 1/2" Vents

### Polycor Gas Insert

#### 103446NG | 103447LP

CFBH160 H-Style Brass Burner with WATERSTOP  
42 1/2" x 13 1/2" Rectangular Aluminum Plate  
Flex Line/Key Valve Kit  
14 1/2" x 5" Mounting Bracket  
(4) Flexible, No Drill Collars  
(2) 14 1/2" x 5" Vents

### Polycor Gas Insert

#### 103441NG | 103442LP

CFB180 Original Brass Burner with WATERSTOP  
28" Square Aluminum Plate  
Flex Line/Key Valve Kit  
14 1/2" x 5" Mounting Bracket  
(4) Flexible, No Drill Collars  
(2) 14 1/2" x 5" Vents

### Weston Gas Insert

#### UPKBWLP | UPKBWNG

CFB240 Original Brass Burner with WATERSTOP  
39" Circular Aluminum Plate  
Flex Line/Key Valve Kit  
11 3/8" x 4" Mounting Bracket  
(6) Flexible, No Drill Collars  
(2) 11 3/8" x 4" Vents

### Prescott Gas Insert

#### UPKPSLP | UPKPSNG

CFB180 Original Brass Burner with WATERSTOP  
27 1/4" Square Aluminum Plate  
Flex Line/Key Valve Kit  
9" x 4 1/2" Mounting Bracket  
(6) Flexible, No Drill Collars  
(2) 9" x 4 1/2" Vents

### Brandon Gas Insert

#### UPKBSLP | UPKBSNG

CFB180 Original Brass Burner with WATERSTOP  
27 1/4" Square Aluminum Plate  
Flex Line/Key Valve Kit  
14" x 3 1/2" Mounting Bracket  
(6) Flexible, No Drill Collars  
(2) 14" x 3 1/2" Vents

View the most up-to-date Plates, Pans, and Covers page.

