



## **GAS INSERT KITS**

FOR RAFFINATO PAVER FIRE FEATURES



SUPERIOR PRODUCTS | MADE IN THE U.S.A. | OUTSTANDING CUSTOMER SERVICE

Visit us online at [Warming-Trends.com](https://www.Warming-Trends.com) for more information and pricing  
or call **303-346-2224** to speak with one of our Flame Specialists today.

# WARMING TRENDS®

## GAS INSERT KITS FOR RAFFINATO PAVER FIRE FEATURES

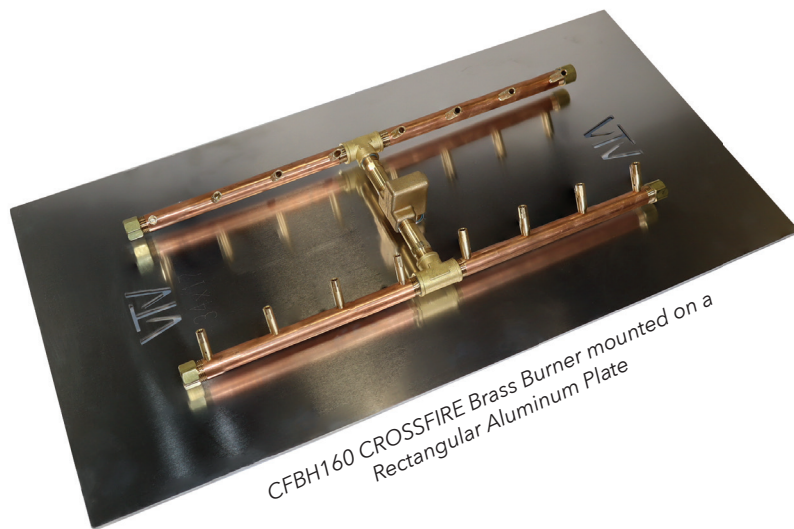


Complete your Raffinato Paver Block Kit install with a Warming Trends® Fire Feature System! This convenient gas insert kit includes everything needed to create a superior fire feature system including a CROSSFIRE® Brass Burner, Aluminum Plate, Collars, Vents, Flex Line Kit, and Key Valve Mounting Bracket.

### GAS INSERT KIT

#### 160K BTU FIRE FEATURE SYSTEM UPKRRNG | UPKRRLP

- CFBH160 CROSSFIRE® Brass Burner with WATERSTOP™
- 32" x 17.75" Rectangular Aluminum Plate
- Flexible, No Drill Collars (5)
- 14" x 3.5" Vents (2)
- Flex Line Kit
- 14" x 3.5" Key Valve Mounting Bracket



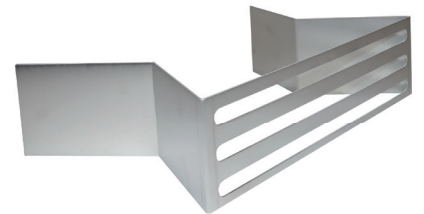
CFBH160 CROSSFIRE Brass Burner mounted on a Rectangular Aluminum Plate

### OPTIONAL IGNITION SYSTEMS

- Push Button Ignition (PBIK)
- Mercury Ignition (MERC)
- Platinum Automatic 24V Ignition
- 3 Volt Ignition (3VIK)
- Standard 24V (24VIK)
- Premium 24V (P24VIK)



Flexible, No Drill Collar



Vent



Key Valve / Mounting Bracket

SUPERIOR PRODUCTS | MADE IN THE U.S.A. | OUTSTANDING CUSTOMER SERVICE

Visit us online at [Warming-Trends.com](http://Warming-Trends.com) for more information and pricing or call **303-346-2224** to speak with one of our Flame Specialists today.