

NDV/NBV Upgrade Kit


DVBV4842-B-KIT, DVBV4236-B-KIT, DVBV3933-B-KIT, DVBV3630-B-KIT

Models: NDV3630I-B, NDV3630IL-B, NDV3933I-B, NDV3933IL-B,
NDV4236I-B, NDV4236IL-B, NDV4842I-B, NDV4842IL-B
NBV3630I-B, NBV3933I-B, NBV4236I-B, NBV4842I-B

CAUTION! Risk of Cuts, Abrasions or Flying Debris.
Wear protective gloves and safety glasses during installation. Sheet metal edges are sharp.

KIT CONTENTS:

- A. Embers
- B. Flue Visor
- C. Hearth Pan
- D. False Back
- E. Pilot Shield
- F. Logs

 **DANGER**



HOT GLASS WILL CAUSE BURNS.

DO NOT TOUCH GLASS UNTIL COOLED.

NEVER ALLOW CHILDREN TO TOUCH GLASS.

A barrier designed to reduce the risk of burns from the hot viewing glass is provided with this appliance and shall be installed for the protection of children and other at-risk individuals.

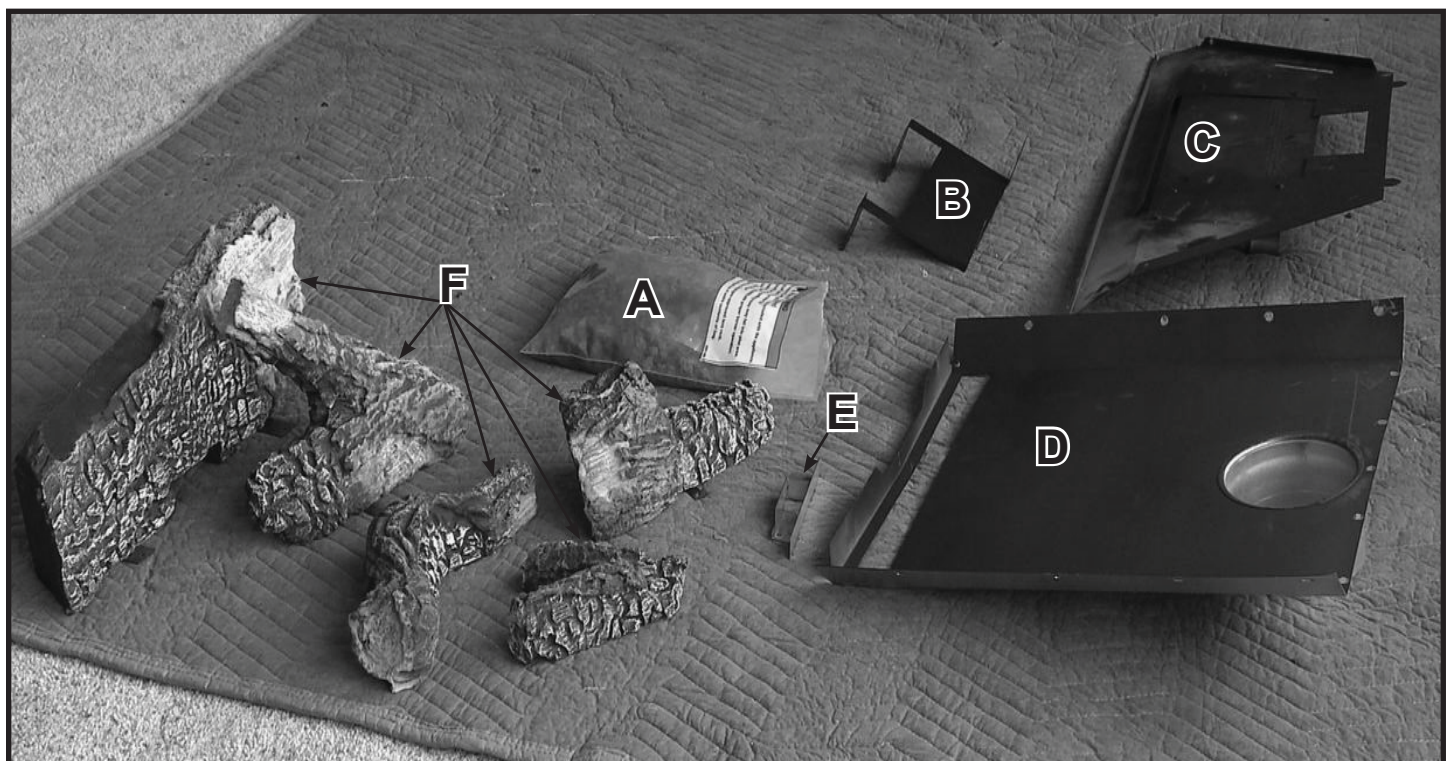


Figure 1. Kit Contents

1. Remove the hearth pan and log set. See Figure 2.



Figure 2.

2. Remove the pilot shield. See Figure 3.



Figure 3.

3. Remove the flue visor. See Figure 4.

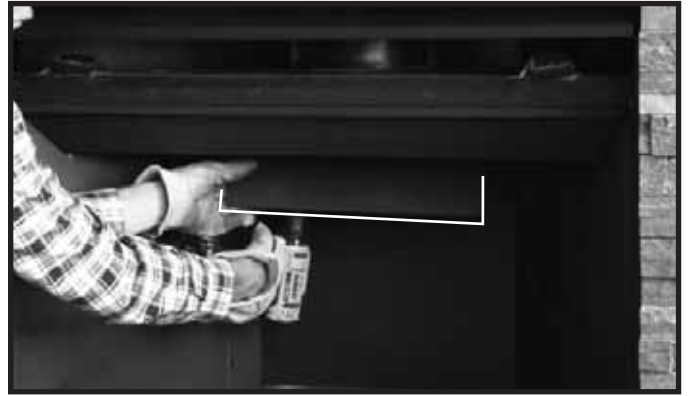


Figure 4.

4. Remove the false back. See Figure 5.



Figure 5.

5. Install the logs on the hearth pan as shown on the next page.

See Table 1 for corresponding log set and individual logs for each size Novus model.

Table 1.

SIZE	3630	3933	4236	4842
ASSEMBLY	SRV2380-070	SRV2381-070	SRV2382-070	SRV2383-070
LOG 1	SRV2380-071	SRV2380-071	SRV2382-071	SRV2383-071
LOG 2	SRV2380-072	SRV2381-072	SRV2381-072	SRV2383-072
LOG 3	SRV2380-073	SRV2381-073	SRV2381-073	SRV2383-073
LOG 4	SRV2380-074	SRV2380-074	SRV2382-074	SRV2382-074
LOG 5	SRV2380-075	SRV2380-075	SRV2380-075	SRV2383-075

CAUTION: Logs are fragile, handle with care.

See Figure 6 for locations of fasteners for each log.

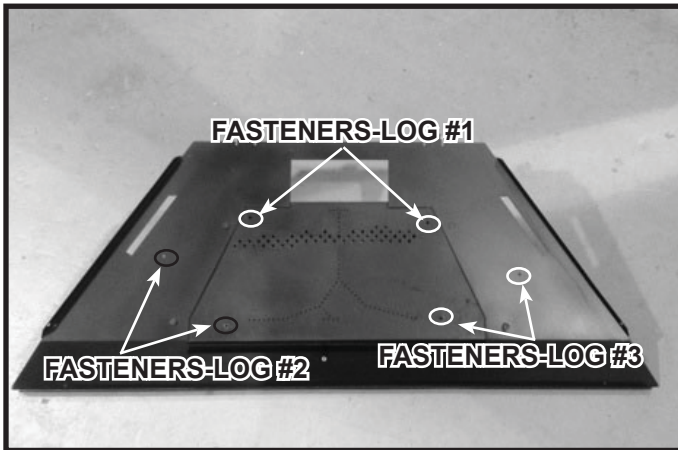


Figure 6. Log Fastener Locations on Base Pan

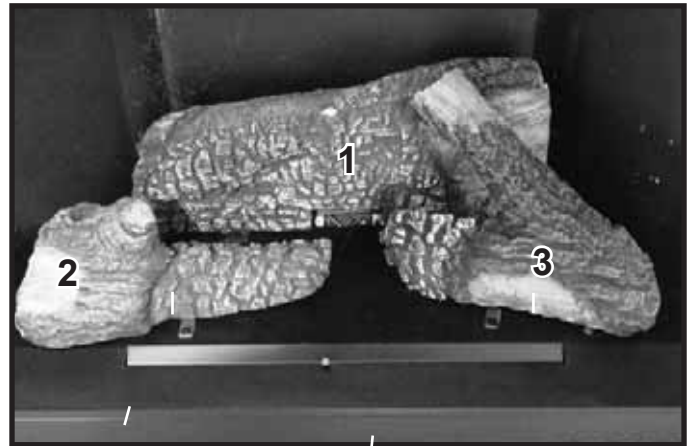


Figure 7. Log Set Shown Assembled

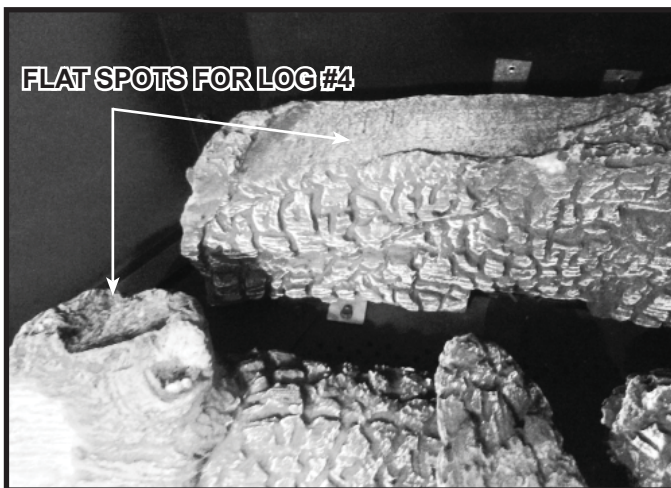


Figure 8. Locations of Flat Spots for Log #4

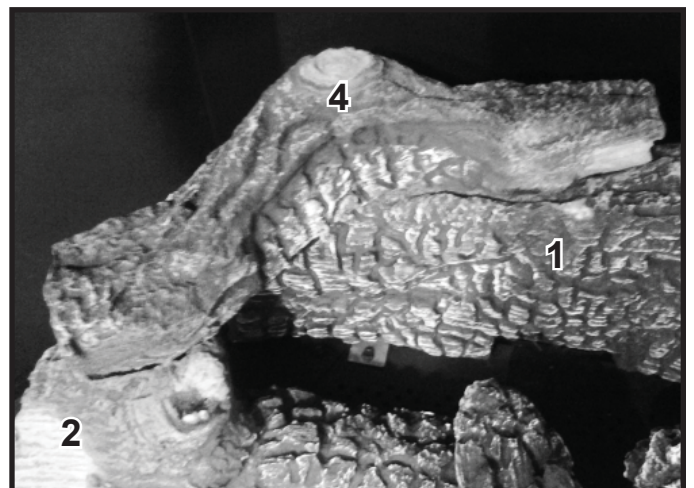


Figure 9. Log #4 in Position

LOG #4: Place Log #4 into position by setting the left end of Log #4 into the flat spot on Log #2 and then resting the right end, or nose, of Log #4 on the flat spot on Log #1. Figure 8 shows locations of flat spots. Figure 9 shows Log #4 installed.

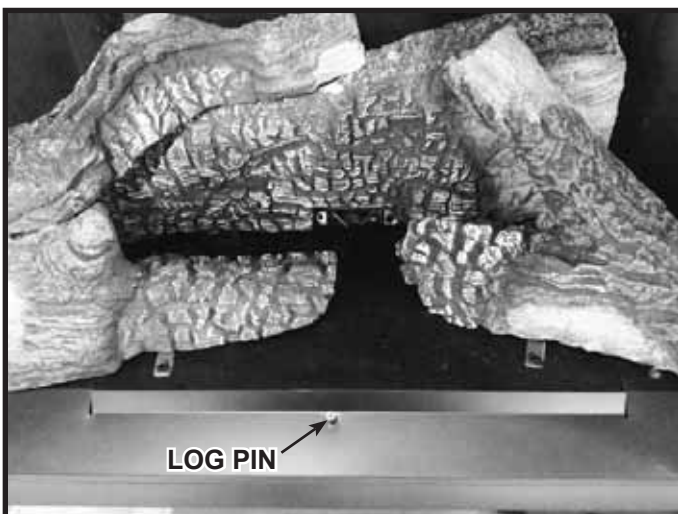


Figure 10. Log Pin Location

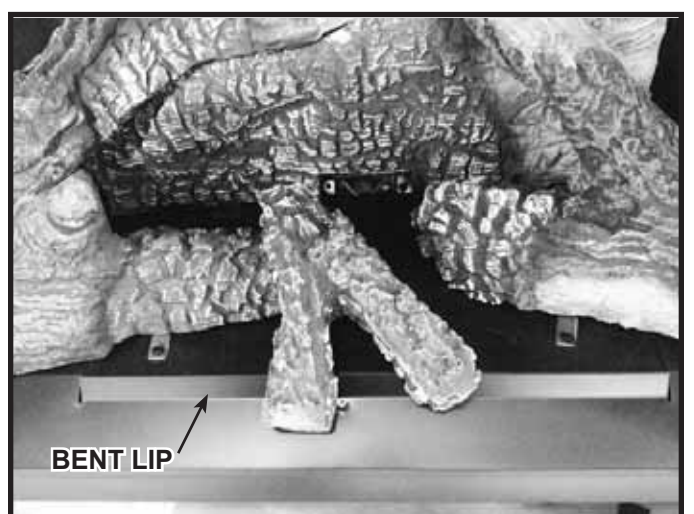


Figure 11. Log #5 in Position

Log #5: Place Log #5 into position. The forked end of Log #5 is positioned toward the front of the appliance, with the two slots on the back side resting on the bent lip of the hearth pan. See Figure 11. Slide Log #5 toward the right until it contacts the log pin as shown in Figure 11.

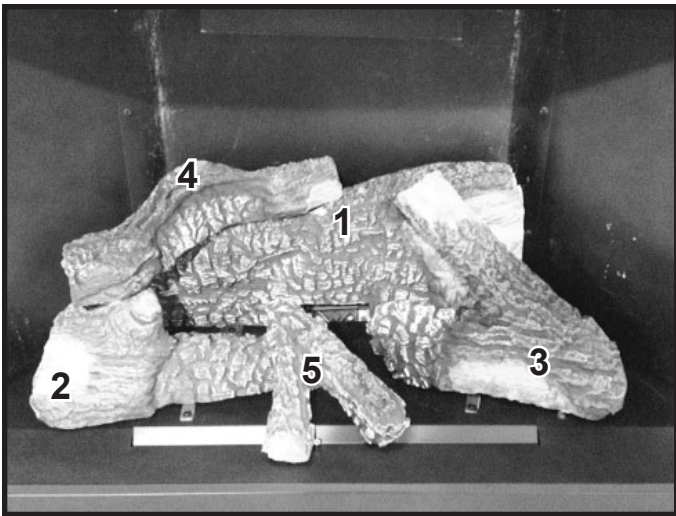


Figure 12. Log Set Installed

6. Assemble new false back. See Figure 13.



Figure 13.

7. Install new flue visor. See Figure 14.



Figure 14.

8. Install pilot shield. Pilot shield should be installed on top of pilot assembly. See Figure 15.



Figure 15.

9. Install hearth pan and assembly. Place into appliance. See Figure 16.



Figure 16.

10. Add embers and lava rock following the instructions in the appliance installation manual.

11. Install the two top logs as shown in the log instructions on previous pages.

Heatilator, a brand of Hearth & Home Technologies
 7571 215th Street West, Lakeville, MN 55044
www.heatilator.com