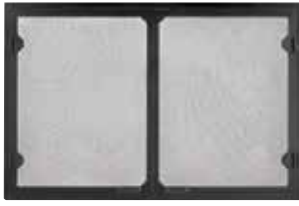


# ACCESSORIES FOR YOUR WOOD FIREPLACE

## DOOR STYLES



Grand Vista Mesh Doors



Gasketed Glass Doors

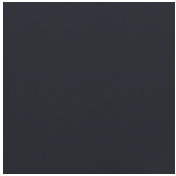


Bi-fold Glass Doors



Contour Screen Doors

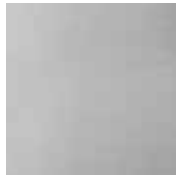
## DOOR FINISHES



Black

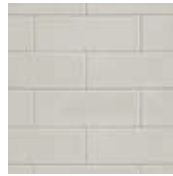


Bronze



Stainless Steel

## INTERIOR PANELS



Traditional Brick



Herringbone Brick

## TERMINATION CAPS



Decorative faux-copper finish

OPTIONS AND ACCESSORIES		WARMMAJIC II	ASHLAND	BILTMORE	SOVEREIGN	ROYALTON	DESIGNER SEE-THROUGH
DOORS	Bifold Glass Doors		Black, Bronze	Black	Black, Stainless Steel	Black, Stainless Steel	Black, Stainless Steel*
	Grand Vista Mesh Doors			Black	Black, Stainless Steel		
	Contour Screen Doors			Black			
	Gasketed Glass Doors	●			Black		
INTERIORS	Traditional	Firebrick	●	●	●	●	
	Herringbone		●	●			
LOGS	Various Gas Logs		●	●	●	●	●

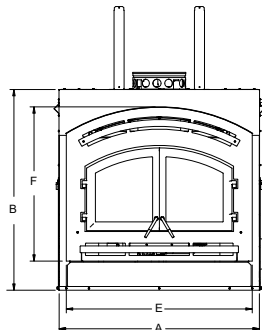
For gas log options, visit [majesticproducts.com](http://majesticproducts.com) or [majesticfireplaces.ca](http://majesticfireplaces.ca).

\* Stainless steel finish available for 36" only

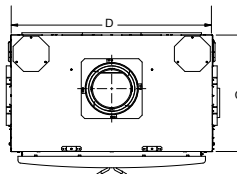
# TECHNICAL SPECIFICATIONS

## WarmMajic II

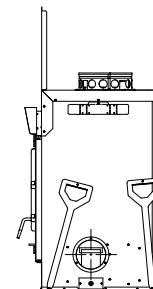
MODEL	FRONT WIDTH (A)		HEIGHT (B)		DEPTH (C)		REAR WIDTH (D)		FIREPLACE OPENING (E X F)
	ACTUAL	FRAMING	ACTUAL	FRAMING	ACTUAL	FRAMING	ACTUAL	FRAMING	
WARMMAJIC II	40" (1016mm)	42-1/2" (1067mm)	40-1/2" (1029mm)	56-3/4" (1441mm)	23-1/2" (597mm)	24** (610mm)	40" (1016mm)	42-1/2" (1067mm)	37" x 31-1/8" (940mm x 791mm)



Front View



Top View



Side View

\*\*If interior of chase will be drywalled, add the thickness to this measurement.