



Manufacturer of the CROSSFIRE™ Brass Burner

180K BTU Match Lit System with FLKV34 & FLKVFIT180 Installation Manual

- * Select key valve location on your fire pit
- * Plumb your existing gas supply into one side of your key valve
- * Position your preferred support materials for the burner & plate inside of your fire pit (i.e., cinder blocks, elbow brackets, etc.)
- * Warming Trends recommends a 4" clearance from the finished top of your fire pit to your plate
- * Warming Trends recommends a minimum 6" clearance below plate for additional connections
- * Make sure to use thread sealant that is resistant to all gases on all fittings except flared fittings for flex lines
- * Be sure to tighten every joint securely
- * Perform leak tests on all fittings

Step 1: Locate the FLKVFIT180 fitting located inside of your Warming Trends box and remove from packaging. – Photos #1 & #2



Photo #1

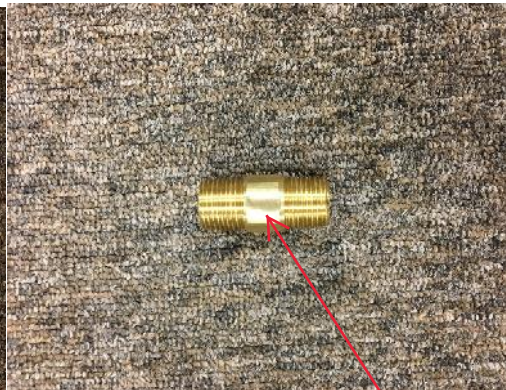


Photo #2

1/2" x 2" Wrench
Bite Pipe Nipple

Step 2: Locate your FLKV34 and remove flex line, key valve, and keys from packaging – Photos #3 & #4



Photo #3



Photo #4

Step 3: Remove the $\frac{3}{4}$ " flared fittings from each end of your $\frac{3}{4}$ " flex line – Photo #5



Photo #5

Step 4: Connect your FLKVFIT180 fitting to one of the 3/4" flared fitting removed in step three – Photos #6 & #7



Photo #6

Photo #7

Apply Thread Sealant Here

Step 5: Connect the new fitting you created in steps three and four to the 1/2" coupling located on the bottom of your aluminum plate – Photos #8 & #9

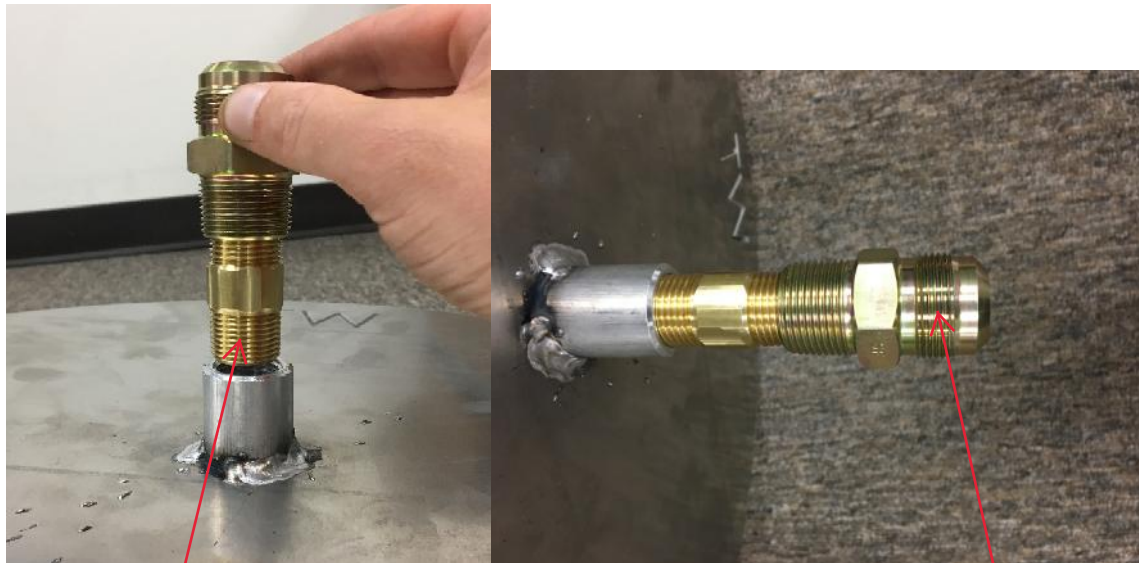


Photo #8

Photo #9

Apply Thread Sealant Here

No Thread Sealant

Step 6: Connect your 3/4" flex line to the fitting now located on the bottom of your aluminum plate – Photos #10 & #11



Photo #10

Photo #11

Step 7: Locate the other 3/4" flared fitting removed in step three and connect into the 3/4" key valve – Photo #12 & #13

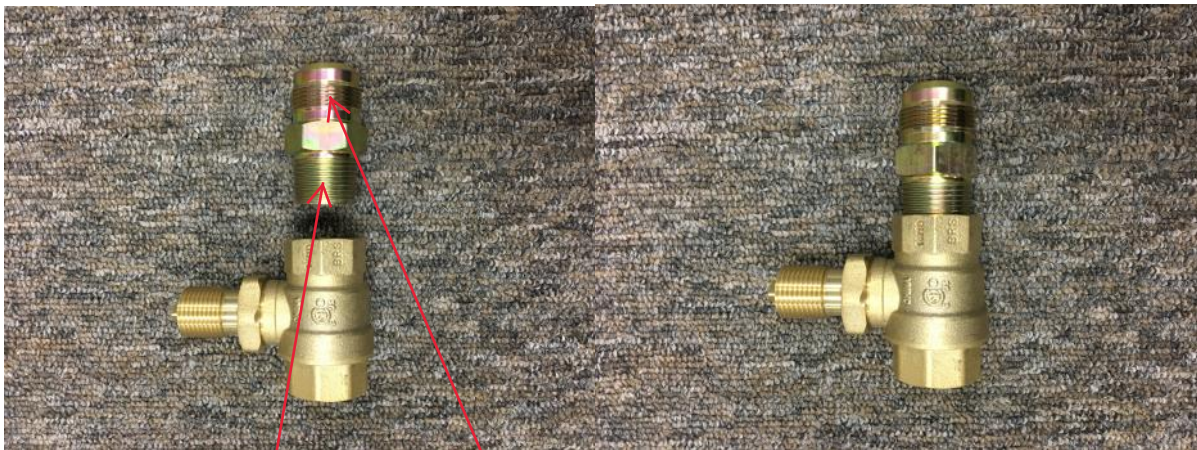


Photo #12

Photo #13

Apply Thread Sealant Here

No Thread Sealant

Step 8: Connect 3/4" flex line into the fitting connected in step seven – Photos #14 & #15



Photo #14

Photo #15