

ROVA BAR TABLE OFG224

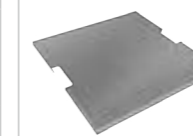
PRODUCT DESCRIPTION

- Body construction Handcrafted glass-fiber reinforced concrete
- Burner size Dia. 9.8 in. / 25 cm
- Burner construction 18 gauge, 304 stainless steel
- Burner pan size 12.2 x 12.2 x 0.2 in.
[31 x 31 x 0.5 cm]
- Burner pan construction 18 gauge, 304 stainless steel
- Control system Push button spark ignition system
- Gas type Propane
- Propane item number OFG224-LP
- Maximum heat output 40,000 BTUs for CSA
11.72 KW for CE & UKCA
- Conceald standard 20 lbs / 10 kgs propane tank (not included)
- Certification CSA & CE & UKCA Certified
- Warranty 1 year
- Accessories available as below



Specification	Length		Width		Height		Weight
	in.	cm	in.	cm	in.	cm	
Product	34.3	87	34.3	87	41.7	106	209 lbs [95.1 kgs]
Product (top)	34.3	87	34.3	87	2.4	6	
Product (base)	22	56	22	56	41.7	106	
Package (top)	36.8	93.5	36.8	93.5	4.1	10.5	227 lbs [103.1 kgs]
Package (base)	24.4	62	24.4	62	44.7	113.5	

Standard (Included)



Stainless Steel Lid
ONF01-214D
(OFG224-SS)



Lava Rock
6.6 lbs / 3 kgs



Canvas Cover

Optional Accessories (Sold Separately)



Wind Screen
ONC05-003A
(OFG224-WS)

* Product Color May Vary Due to Photographic Lighting Sources or Your Monitor Settings

MONTREAL

BAR TABLE

OFG221

PRODUCT DESCRIPTION

- Body construction Handcrafted glass-fiber reinforced concrete
- Burner size Dia. 9.8 in. / 25 cm
- Burner construction 16 gauge, 304 stainless steel
- Burner pan size 12.2 x 12.2 x 0.2 in.
[31 x 31 x 0.5 cm]
- Burner pan construction 16 gauge, 304 stainless steel
- Control system Push button spark ignition system
- Gas type Propane
- Propane item number OFG221-LP
- Maximum heat output 40,000 BTUs for CSA
11.72 KW for CE & UKCA
- Concealed standard 20 lbs / 10 kgs propane tank (not included)
- Certification CSA & CE & UKCA Certified
- Warranty 1 year
- Accessories available as below

Available colors:



Light Grey
OFG221LG



Dark Grey
OFG221DG

Specification	Length		Width		Height		Weight
	in.	cm	in.	cm	in.	cm	
Product	34.3	87	34.3	87	41.7	106	209 lbs [95.1 kgs]
Product (top)	34.3	87	34.3	87	2.4	6	
Product (base)	22	56	22	56	41.7	106	
Package (top)	36.8	93.5	36.8	93.5	4.1	10.5	227 lbs [103.1 kgs]
Package (base)	24.4	62	24.4	62	44.7	113.5	



Standard (Included)



Stainless Steel Lid
ONF01-216D
(OFG221-SS)



Lava Rock
6.6 lbs / 3 kgs



Canvas Cover

Optional Accessories (Sold Separately)



Wind Screen
ONC05-003A
(OFG221-WS)



* Product Color May Vary Due to Photographic Lighting Sources or Your Monitor Settings