

SYDNEY

ETHANOL FIRE TABLE

ECG01

PRODUCT DESCRIPTION

- Body construction Handcrafted glass-fiber reinforced concrete
- Burner construction 16 gauge, 304 stainless steel
- Burner size 36.1 x 7.9 x 4.5 in.
[91.7 x 20 x 11.5 cm]
- Fuel Ethanol
- Maximum capacity 15L
- Application Both indoor and outdoor
- Maximum heat output 27,000 BTUs / 8 KW
- Warranty 1 year
- Accessories available as below



Available colors:



Specification	Product		Package	
	in.	cm	in.	cm
Length	61.9	157.1	64.8	164.5
Width	29.9	75.8	32.9	83.5
Height	14	35.6	17.3	44
Weight	181 lbs	82 kgs	209 lbs	95 kgs

Standard (Included)





PERTH

ETHANOL FIRE TABLE

ECG02

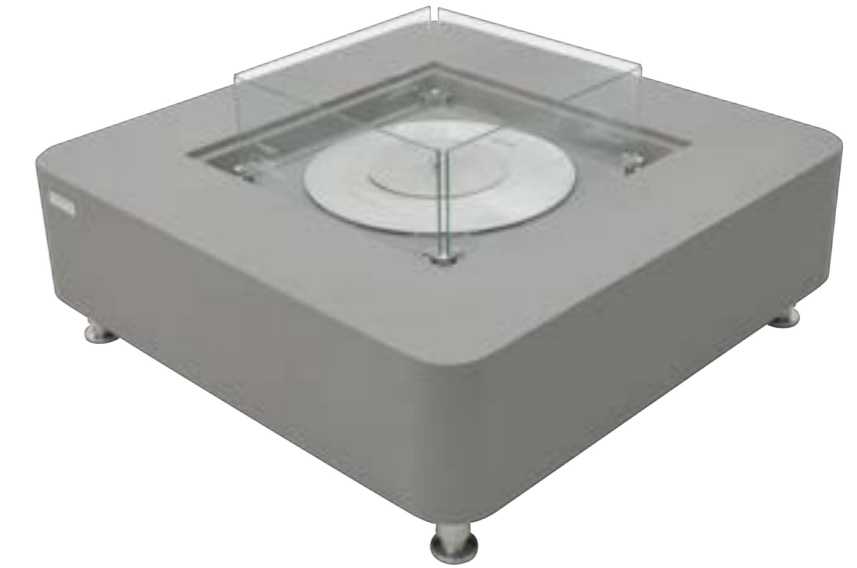
PRODUCT DESCRIPTION

- Body construction Handcrafted glass-fiber reinforced concrete
- Burner construction 16 gauge, 304 stainless steel
- Burner size Dia. 18.1 x 3.9 in.
[Dia. 46 x 10 cm]
- Fuel Ethanol
- Maximum capacity 10L
- Application Both indoor and outdoor
- Maximum heat output Flame adjuster
Maxmum Fire : 61,000 BTUs / 18KW
Medium Fire : 34,000 BTUs / 10KW
Minimum Fire : 6,800 BTUs / 2KW
- Warranty 1 year
- Accessories available as below

Available colors:



Specification	Product		Package	
	in.	cm	in.	cm
Length	40	101.6	42.7	108.5
Width	40	101.6	42.7	108.5
Height	14	35.6	17.3	44
Weight	162 lbs	73 kgs	189 lbs	86 kgs



* Product Color May Vary Due to Photographic Lighting Sources or Your Monitor Settings