

ELEMENTI[®]

FIRE

OCEAN ROCK USA INC.

505 E Rincon St., Ste 100 Corona, CA 92879

www.elementifire.com

E-mail: info@elementifire.com

Tel.: +1 951-220-7227

ELEMENTI INDUSTRIAL (XIAMEN) CO., LTD.

OCEAN ROCK GLOBAL TRADING (XIAMEN) CO., LTD.

901, 1739 Lvling Rd., Xiamen, China (361008)

www.oceanrockcn.com

E-mail: info@oceanrockcn.com

Tel.: +86 592-6368809

OCEAN ROCK EU GmbH

Karl-Benz-Straße 9, 40764 Langenfeld, Germany

www.elementieu.com

E-mail: info@oceanrockeu.com

Tel.: +49 2173-2979 981

2024

Fire – The most significant role in humanity's development. Human history tells us that the use of fire had generated a new era of human's striving for freedom and conquering the nature since fabrication of stone tools.

ABOUT ELEMENTI

Originated in Los Angeles, USA. Elementi is a group of artists and craftsmen that are dedicated to combining market with high-quality aesthetics of outdoor living in the wild landscape. Our directive is always to design and manufacture artistic combinations of form and function.

Beauty is the foundation of everything. For our product line of fireplaces, burners are reprocessed on items that are gorgeous on their own, which combination turn themselves into masterpieces that will be sure to become the highlight of any patio and landscape design.

Innovation and technique are the keys to progress. We design, manufacture and launch all of our products that are fresh to the marketplace. Our professional engineers design and built burner systems in our fireplaces, which serves for ideal size and shape of burners (modified burner ring and BTU output) and excellent flame effect.

CUSTOM MANUFACTURING

No matter your preferred style is natural, historic, or modern, our designers can customize for you. We make fire features with a wide range of BTU outputs for both residential and commercial installations. We can also incorporate features such as safety valves, pilot systems and remote electronic ignition into all of our fire pits.

PRIVATE LABEL MANUFACTURING

Large capacity production is no problem for us. We can supply full truckloads of private labelling products for large volume retailers. Our designers are capable of revising our current designs or working with purchasing departments to create novel designs to meet their needs.

CERTIFICATION STANDARDS

All Elementi fire systems strictly follow the standards of North American ANSI Z21.97-2017/CSA 2.41-2017 and the European Union. All our products have achieved certificates from the CSA or CE, among which CSA is the most authoritative institution in North America for products' safety and environmental protection.



ANDES FIRE TABLE OFG309



PRODUCT DESCRIPTION

- Body construction Handcrafted glass-fiber reinforced concrete
- Burner size 30 in. / 76.2 cm length
- Burner construction 16 gauge, 304 stainless steel
- Burner pan size 31.9 x 11.1 x 0.2 in. [81 x 28.2 x 0.5 cm]
- Burner pan construction 16 gauge, 304 stainless steel
- Control system Push button spark ignition system
- Gas type Propane
- Propane item number OFG309-LP
- Maximum heat output 60,000 BTUs for CSA
16 KW for CE & UKCA
- Conceald standard 20 lbs / 10 kgs propane tank (not included)
- Certification CSA & CE & UKCA Certified
- Warranty 1 year
- Accessories available as below



Available colors:



Light Grey
OFG309LG



Dark Grey
OFG309DG

Specification	Product		Package	
	in.	cm	in.	cm
Length	66	167.6	68.9	175
Width	32	81.3	35.4	90
Height	22	56	25.6	65
Weight	255 lbs	116 kgs	290 lbs	132 kgs

Standard (Included)



Lava Rock
24.2 lbs / 11 kgs



Canvas Cover

Optional Accessories (Sold Separately)



Stainless Steel Lid
ONF01-441D
(OFG309-SS)



Wind Screen
ONC05-027
(OFG309-WS)

* Product Color May Vary Due to Photographic Lighting Sources or Your Monitor Settings

LUNAR BOWL

FIRE TABLE

OFG101

PRODUCT DESCRIPTION

- Body construction Handcrafted glass-fiber reinforced concrete
- Burner size Dia. 12 in. / 30.5 cm
- Burner construction 16 gauge, 304 stainless steel
- Burner pan size Dia. 23.7 x 0.05 in.
[Dia. 60.3 x 0.12 cm]
- Burner pan construction 16 gauge, 304 stainless steel
- Control system Push button spark ignition system
- Natural gas item number OFG101-NG
- Propane item number OFG101-LP
- Maximum heat output 45,000 BTUs for CSA
13.2 KW for CE & UKCA
- Certification CSA & CE & UKCA Certified
- Warranty 1 year
- Accessories available as below



Available colors:



Light Grey
OFG101LG



Dark Grey
OFG101DG



Sunlight Yellow
OFG101SY

Specification	Product		Package	
	in.	cm	in.	cm
Length	42.1	107	44.1	112
Width	42.1	107	44.1	112
Height	15.7	40	18.3	46.5
Weight	153 lbs	69.6 kgs	181 lbs	82.4 kgs

Standard (Included)



Lava Rock
26.4 lbs / 12 kgs



Canvas Cover

Optional Accessories (Sold Separately)



Stainless Steel Lid
ONF01-126D
(OFG101-SS)



Wind Screen
ONC05-002
(OFG101-WS)



Tank Cover
ONB01-102 or
ONB01-207



* Product Color May Vary Due to Photographic Lighting Sources or Your Monitor Settings

MANHATTAN

FIRE TABLE

OFG103

PRODUCT DESCRIPTION

- Body construction Handcrafted glass-fiber reinforced concrete
- Burner size Dia. 12 in. / 30.5 cm
- Burner construction 16 gauge, 304 stainless steel
- Burner pan size 20.3 x 20.3 x 2 in.
[51.5 x 51.5 x 5 cm]
- Burner pan construction 16 gauge, 304 stainless steel
- Control system Push button spark ignition system
- Natural gas item number OFG103-NG
- Propane item number OFG103-LP
- Maximum heat output 45,000 BTUs for CSA
13.2 KW for CE & UKCA
- Certification CSA & CE & UKCA Certified
- Warranty 1 year
- Accessories available as below



Available colors:



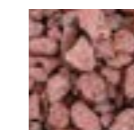
Light Grey
OFG103LG



Dark Grey
OFG103DG

Specification	Product		Package	
	in.	cm	in.	cm
Length	36	91.4	38.8	98.5
Width	36	91.4	38.8	98.5
Height	16	40.6	18.7	47.5
Weight	154 lbs	69.8 kgs	175 lbs	79.3 kgs

Standard (Included)

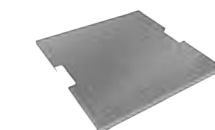


Lava Rock
19.8 lbs / 9 kgs



Canvas Cover

Optional Accessories (Sold Separately)



Stainless Steel Lid
ONF01-220D
(OFG103-SS)



Wind Screen
ONC05-004
(OFG103-WS)



Tank Cover
ONB016 or
ONB01-209

* Product Color May Vary Due to Photographic Lighting Sources or Your Monitor Settings

METROPOLIS

FIRE TABLE

OFG104

PRODUCT DESCRIPTION

- Body construction Handcrafted glass-fiber reinforced concrete
- Burner size Dia. 12 in. / 30.5 cm
- Burner construction 16 gauge, 304 stainless steel
- Burner pan size Dia. 20.3 x 2 in. [Dia. 51.5 x 5 cm]
- Burner pan construction 16 gauge, 304 stainless steel
- Control system Push button spark ignition system
- Natural gas item number OFG104-NG
- Propane item number OFG104-LP
- Maximum heat output 45,000 BTUs for CSA
13.2 KW for CE & UKCA
- Certification CSA & CE & UKCA Certified
- Warranty 1 year
- Accessories available as below



Available colors:



Light Grey
OFG104LG



Dark Grey
OFG104DG

Specification	Product		Package	
	in.	cm	in.	cm
Length	56	142.2	58.7	149
Width	32	81.3	35	89
Height	14	35.6	16.7	42.5
Weight	171 lbs	77.5 kgs	197 lbs	89.3 kgs

Standard (Included)



Lava Rock
13.2 lbs / 6 kgs



Canvas Cover

Optional Accessories (Sold Separately)



Stainless Steel Lid
ONF01-120D
(OFG104-SS)



Wind Screen
ONC05-001
(OFG104-WS)



Tank Cover
ONB016 or
ONB01-209



* Product Color May Vary Due to Photographic Lighting Sources or Your Monitor Settings

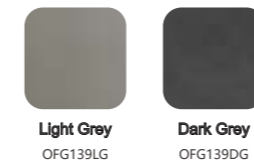
HAMPTON FIRE TABLE OFG139

PRODUCT DESCRIPTION

- Body construction Handcrafted glass-fiber reinforced concrete
- Burner size 30 in. / 76.2 cm length
- Burner construction 16 gauge, 304 stainless steel
- Burner pan size 41.3 x 11.3 x 2 in.
[104.8 x 28.6 x 5 cm]
- Burner pan construction 16 gauge, 304 stainless steel
- Control system Push button spark ignition system
- Natural gas item number OFG139-NG
- Propane item number OFG139-LP
- Maximum heat output 45,000 BTUs for CSA
13.2 KW for CE & UKCA
- Certification CSA & CE & UKCA Certified
- Warranty 1 year
- Accessories available as below



Available colors:



Specification	Product		Package	
	in.	cm	in.	cm
Length	56	142.2	58.7	149
Width	32	81.3	35	89
Height	14	35.6	16.7	42.5
Weight	173 lbs	78.4 kgs	198 lbs	90.1 kgs

Standard (Included)



Lava Rock
13.2 lbs / 6 kgs



Canvas Cover

Optional Accessories (Sold Separately)



Stainless Steel Lid
ONF01-442D
(OFG139-SS)



Wind Screen
ONC05-005
(OFG139-WS)



Tank Cover
ONB016 or
ONB01-209

KINGSALE FIRE TABLE OFG126

PRODUCT DESCRIPTION

- Body construction Handcrafted glass-fiber reinforced concrete
- Burner size 30 in. / 76.2 cm length
- Burner construction 16 gauge, 304 stainless steel
- Burner pan size 41.3 x 11.3 x 2 in.
[104.8 x 28.6 x 5 cm]
- Burner pan construction 16 gauge, 304 stainless steel
- Control system Push button spark ignition system
- Natural gas item number OFG126-NG
- Propane item number OFG126-LP
- Maximum heat output 45,000 BTUs for CSA
13.2 KW for CE & UKCA
- Certification CSA & CE & UKCA Certified
- Warranty 1 year
- Accessories available as below



Available colors:



Light Grey
OFG126LG



Dark Grey
OFG126DG

Specification	Product		Package	
	in.	cm	in.	cm
Length	58	147.3	60.4	153.5
Width	28	71.1	30.3	77
Height	17	43.2	20.1	51
Weight	181 lbs	82.4 kgs	206 lbs	93.5 kgs

Standard (Included)



Lava Rock
13.2 lbs / 6 kgs



Canvas Cover

Optional Accessories (Sold Separately)



Stainless Steel Lid
ONF01-442D
(OFG126-SS)



Wind Screen
ONC05-005
(OFG126-WS)



Tank Cover
ONB016 or
ONB01-209





GRANVILLE

FIRE TABLE

OFG121

PRODUCT DESCRIPTION

- Body construction Handcrafted glass-fiber reinforced concrete
- Burner size 30 in. / 76.2 cm length
- Burner construction 16 gauge, 304 stainless steel
- Burner pan size 41.3 x 11.3 x 2 in.
[104.8 x 28.6 x 5 cm]
- Burner pan construction 16 gauge, 304 stainless steel
- Control system Push button spark ignition system
- Natural gas item number OFG121-NG
- Propane item number OFG121-LP
- Maximum heat output 45,000 BTUs for CSA
13.2 KW for CE & UKCA
- Certification CSA & CE & UKCA Certified
- Warranty 1 year
- Accessories available as below



Available colors:



Light Grey
OFG121LG



Dark Grey
OFG121DG

Specification	Product		Package	
	in.	cm	in.	cm
Length	60	152.4	62.6	159
Width	27.4	69.5	29.9	76
Height	16.9	43	20.1	51
Weight	181 lbs	82.4 kgs	206 lbs	93.5 kgs

Standard (Included)



Lava Rock
13.2 lbs / 6 kgs



Canvas Cover

Optional Accessories (Sold Separately)



Stainless Steel Lid
ONF01-442D
(OFG121-SS)



Wind Screen
ONC05-005
(OFG121-WS)



Tank Cover
ONB01-109 or
ONB01-208

* Product Color May Vary Due to Photographic Lighting Sources or Your Monitor Settings

COLUMBIA

FIRE TABLE

OFG105

PRODUCT DESCRIPTION

- Body construction Handcrafted glass-fiber reinforced concrete
- Burner size Dia. 12 in. / 30.5 cm
- Burner construction 16 gauge, 304 stainless steel
- Burner pan size Dia. 17.7 x 0.05 in.
[Dia. 45.1 x 0.12 cm]
- Burner pan construction 16 gauge, 304 stainless steel
- Control system Push button spark ignition system
- Natural gas item number OFG105-NG
- Propane item number OFG105-LP
- Maximum heat output 45,000 BTUs for CSA
13.2 KW for CE & UKCA
- Certification CSA & CE & UKCA Certified
- Warranty 1 year
- Accessories available as below



Specification	Product		Package	
	in.	cm	in.	cm
Length	41.7	106	42.9	109
Width	41.7	106	39	99
Height	15.7	40	18.5	47
Weight	130 lbs	58.9 kgs	151 lbs	68.6 kgs

Standard (Included)



Lava Rock
13.2 lbs / 6 kgs



Canvas Cover

Optional Accessories (Sold Separately)



Stainless Steel Lid
ONF01-120D
(OFG105-SS)



Wind Screen
ONC05-001
(OFG105-WS)



Tank Cover
ONB01-106



BOULDER FIRE TABLE

OFG110

PRODUCT DESCRIPTION

- Body construction Handcrafted glass-fiber reinforced concrete
- Burner size Dia. 12 in. / 30.5 cm
- Burner construction 16 gauge, 304 stainless steel
- Burner pan size Dia. 17.7 x 0.05 in.
[Dia. 45.1 x 0.12 cm]
- Burner pan construction 16 gauge, 304 stainless steel
- Control system Push button spark ignition system
- Natural gas item number OFG110-NG
- Propane item number OFG110-LP
- Maximum heat output 45,000 BTUs for CSA
13.2 KW for CE & UKCA
- Certification CSA & CE & UKCA Certified
- Warranty 1 year
- Accessories available as below



Specification	Product		Package	
	in.	cm	in.	cm
Length	43.3	110	42.9	109
Width	35	89	39	99
Height	16.1	41	18.1	46
Weight	127 lbs	57.9 kgs	149 lbs	67.6 kgs

Standard (Included)



Lava Rock
13.2 lbs / 6 kgs



Canvas Cover

Optional Accessories (Sold Separately)



Stainless Steel Lid
ONF01-119D
(OFG110-SS)



Wind Screen
ONC05-001
(OFG110-WS)



Tank Cover
ONB01-117

* Product Color May Vary Due to Photographic Lighting Sources or Your Monitor Settings

MANCHESTER

FIRE TABLE

OFG145RW

PRODUCT DESCRIPTION

- Body construction Handcrafted glass-fiber reinforced concrete
- Burner size Dia. 12 in. / 30.5 cm
- Burner construction 16 gauge, 304 stainless steel
- Burner pan size Dia. 17.7 x 0.05 in.
[Dia. 45.1 x 0.12 cm]
- Burner pan construction 16 gauge, 304 stainless steel
- Control system Push button spark ignition system
- Natural gas item number OFG145RW-NG
- Propane item number OFG145RW-LP
- Maximum heat output 45,000 BTUs for CSA
13.2 KW for CE & UKCA
- Certification CSA & CE & UKCA Certified
- Warranty 1 year
- Accessories available as below



Specification	Product		Package	
	in.	cm	in.	cm
Length	41.7	106	41.5	105.5
Width	39.4	100	40.7	103.5
Height	16.9	43	19.1	48.5
Weight	143 lbs	64.9 kgs	166 lbs	75.3 kgs

Standard (Included)



Lava Rock
13.2 lbs / 6 kgs



Canvas Cover

Optional Accessories (Sold Separately)



Stainless Steel Lid
ONF01-120DS
(OFG145-SS)



Wind Screen
ONC05-001
(OFG145-WS)



Tank Cover
ONB01-118



* Product Color May Vary Due to Photographic Lighting Sources or Your Monitor Settings

LAFITE

BARREL BAR TABLE

OFG225

PRODUCT DESCRIPTION

- Body construction Handcrafted glass-fiber reinforced concrete
- Burner size Dia. 12 in. / 30.5 cm
- Burner construction 16 gauge, 304 stainless steel
- Burner pan size Dia. 17.7 x 0.05 in.
[Dia. 45.1 x 0.12 cm]
- Burner pan construction 16 gauge, 304 stainless steel
- Control system Push button spark ignition system
- Gas type Propane
- Propane item number OFG225-LP
- Maximum heat output 45,000 BTUs for CSA
13.2 KW for CE & UKCA
- Conceald standard 20 lbs / 10 kgs propane tank (not included)
- Certification CSA & CE & UKCA Certified
- Warranty 1 year
- Accessories available as below

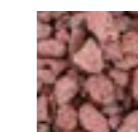


Specification	Length		Width		Height		Weight
	in.	cm	in.	cm	in.	cm	
Product	48	122	48	122	43.1	109.5	241 lbs [109.6 kgs]
Product (top)	48	122	48	122	2.4	6	
Product (base)	29.5	75	29.5	75	43.3	110	
Package (top)	50.4	128	50.4	128	4.7	12	272 lbs [123.6 kgs]
Package (base)	31.9	81	31.9	81	46.9	119	

Standard (Included)



Aluminum Lid
ONF05-123SY



Lava Rock
13.2 lbs / 6 kgs



Canvas Cover

Optional Accessories (Sold Separately)



Wind Screen
ONC05-001
(OFG225-WS)

* Product Color May Vary Due to Photographic Lighting Sources or Your Monitor Settings

NAPA

BARREL FIRE PIT

OFG615

PRODUCT DESCRIPTION

- Body construction Handcrafted glass-fiber reinforced concrete
- Burner size Dia. 9.8 in. / 25 cm
- Burner construction 18 gauge, 304 stainless steel
- Burner pan size Dia. 12.2 x 0.05 in.
[Dia. 31 x 0.12 cm]
- Burner pan construction 18 gauge, 304 stainless steel
- Control system Push button spark ignition system
- Gas type Propane
- Propane item number OFG615-LP
- Maximum heat output 40,000 BTUs for CSA
11.72 KW for CE & UKCA
- Concealed standard 20 lbs / 10 kgs propane tank (not included)
- Certification CSA & CE & UKCA Certified
- Warranty 1 year
- Accessories available as below

Specification	Product		Package	
	in.	cm	in.	cm
Length	26.8	68	30.3	77
Width	26.8	68	30.3	77
Height	31.5	80	35.4	90
Weight	129 lbs	58.7 kgs	143 lbs	65.2 kgs



Standard (Included)



Lava Rock
13.2 lbs / 6 kgs



Canvas Cover





ROVA

BAR TABLE

OFG224

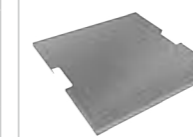
PRODUCT DESCRIPTION

- Body construction Handcrafted glass-fiber reinforced concrete
- Burner size Dia. 9.8 in. / 25 cm
- Burner construction 18 gauge, 304 stainless steel
- Burner pan size 12.2 x 12.2 x 0.2 in.
[31 x 31 x 0.5 cm]
- Burner pan construction 18 gauge, 304 stainless steel
- Control system Push button spark ignition system
- Gas type Propane
- Propane item number OFG224-LP
- Maximum heat output 40,000 BTUs for CSA
11.72 KW for CE & UKCA
- Conceald standard 20 lbs / 10 kgs propane tank (not included)
- Certification CSA & CE & UKCA Certified
- Warranty 1 year
- Accessories available as below



Specification	Length		Width		Height		Weight
	in.	cm	in.	cm	in.	cm	
Product	34.3	87	34.3	87	41.7	106	209 lbs [95.1 kgs]
Product (top)	34.3	87	34.3	87	2.4	6	
Product (base)	22	56	22	56	41.7	106	
Package (top)	36.8	93.5	36.8	93.5	4.1	10.5	227 lbs [103.1 kgs]
Package (base)	24.4	62	24.4	62	44.7	113.5	

Standard (Included)



Stainless Steel Lid
ONF01-214D
(OFG224-SS)



Lava Rock
6.6 lbs / 3 kgs



Canvas Cover

Optional Accessories (Sold Separately)



Wind Screen
ONC05-003A
(OFG224-WS)

* Product Color May Vary Due to Photographic Lighting Sources or Your Monitor Settings

MONTREAL BAR TABLE OFG221

PRODUCT DESCRIPTION

- Body construction Handcrafted glass-fiber reinforced concrete
- Burner size Dia. 9.8 in. / 25 cm
- Burner construction 16 gauge, 304 stainless steel
- Burner pan size 12.2 x 12.2 x 0.2 in.
[31 x 31 x 0.5 cm]
- Burner pan construction 16 gauge, 304 stainless steel
- Control system Push button spark ignition system
- Gas type Propane
- Propane item number OFG221-LP
- Maximum heat output 40,000 BTUs for CSA
11.72 KW for CE & UKCA
- Concealed standard 20 lbs / 10 kgs propane tank (not included)
- Certification CSA & CE & UKCA Certified
- Warranty 1 year
- Accessories available as below

Available colors:



Light Grey
OFG221LG



Dark Grey
OFG221DG

Specification	Length		Width		Height		Weight
	in.	cm	in.	cm	in.	cm	
Product	34.3	87	34.3	87	41.7	106	209 lbs [95.1 kgs]
Product (top)	34.3	87	34.3	87	2.4	6	
Product (base)	22	56	22	56	41.7	106	
Package (top)	36.8	93.5	36.8	93.5	4.1	10.5	227 lbs [103.1 kgs]
Package (base)	24.4	62	24.4	62	44.7	113.5	



Standard (Included)



Stainless Steel Lid
ONF01-216D
(OFG221-SS)



Lava Rock
6.6 lbs / 3 kgs



Canvas Cover

Optional Accessories (Sold Separately)



Wind Screen
ONC05-003A
(OFG221-WS)



* Product Color May Vary Due to Photographic Lighting Sources or Your Monitor Settings

BIRMINGHAM

DINING TABLE

OFG202


PRODUCT DESCRIPTION

- Body construction Handcrafted glass-fiber reinforced concrete
- Burner size Dia. 12 in. / 30.5 cm
- Burner construction 16 gauge, 304 stainless steel
- Burner pan size 17.7 x 17.7 x 0.2 in.
[45.1 x 45.1 x 0.5 cm]
- Burner pan construction 16 gauge, 304 stainless steel
- Control system Push button spark ignition system
- Gas type Propane
- Propane item number OFG202-LP
- Maximum heat output 45,000 BTUs for CSA
13.2 KW for CE & UKCA
- Conceald standard 20 lbs / 10 kgs propane tank (not included)
- Certification CSA & CE & UKCA Certified
- Warranty 1 year
- Accessories available as below




Specification	Length		Width		Height		Weight
	in.	cm	in.	cm	in.	cm	
Product	48	122	48	122	29.5	75	260 lbs [118.3 kgs]
Product (top)	48	122	48	122	2.4	6	
Product (base)	26.8	68	26.8	68	29.5	75	
Package (top)	50.4	128	50.4	128	4.1	10.5	286 lbs [129.8 kgs]
Package (base)	29.1	74	29.1	74	32.7	83	


Standard (Included)



Stainless Steel Lid
ONF01-221D
(OFG202-SS)



Lava Rock
13.2 lbs / 6 kgs



Canvas Cover

Optional Accessories (Sold Separately)



Wind Screen
ONC05-004
(OFG202-WS)

* Product Color May Vary Due to Photographic Lighting Sources or Your Monitor Settings

SONOMA DINING TABLE OFG201

PRODUCT DESCRIPTION

- Body construction Handcrafted glass-fiber reinforced concrete top with natural ashwood base
- Burner size 30 in. / 76.2 cm length
- Burner construction 16 gauge, 304 stainless steel
- Burner pan size 38.3 x 8.3 x 2 in. [97.2 x 21 x 5 cm]
- Burner pan construction 16 gauge, 304 stainless steel
- Control system Push button spark ignition system
- Natural gas item number OFG201-NG
- Propane item number OFG201-LP
- Maximum heat output 45,000 BTUs for CSA
13.2 KW for CE & UKCA
- Certification CSA & CE & UKCA Certified
- Warranty 1 year
- Accessories available as below



Specification	Length		Width		Height		Weight
	in.	cm	in.	cm	in.	cm	
Product	82.7	210	39.4	100	29.5	75	376 lbs [170.9 kgs]
Product (top)	82.7	210	39.4	100	3	7.5	
Product (base)	61.9	157.2	36.5	92.7	28	71.2	
Package	89.8	228	46.5	118	18.5	47	577 lbs [262.4 kgs]

Standard (Included)



Lava Rock
13.2 lbs / 6 kgs



Canvas Cover

Optional Accessories (Sold Separately)



Stainless Steel Lid
ONF01-442D
(OFG201-SS)



Wind Screen
ONC05-005
(OFG201-WS)



Tank Cover
ONB01-109 or
ONB01-208



TANK COVER (SOLD SEPARATELY)



SQUARE TANK COVER

- Item Number: ONB01-109
- Body construction: GFRC
- Product size: 15.7 x 15.7 x 20 in. [40 x 40 x 50.8 cm]
- Product weight: 33 lbs / 15 kgs

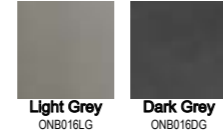
Available colors:



SQUARE TANK COVER

- Item Number: ONB016
- Body construction: GFRC
- Product size: 15.7 x 15.7 x 20 in. [40 x 40 x 50.8 cm]
- Product weight: 33 lbs / 15 kgs

Available colors:



ROUND TANK COVER

- Item Number: ONB01-102
- Body construction: GFRC
- Product size: 15.7 x 15.7 x 20 in. [40 x 40 x 50.8 cm]
- Product weight: 27.5 lbs / 12.5 kgs

Available colors:



SQUARE TANK COVER

- Item Number: ONB01-208
- Body construction: GFRC
- Product size: 17.7 x 17.7 x 24.4 in. [45 x 45 x 62 cm]
- Product weight: 47.5 lbs / 21.6 kgs

Available colors:



SQUARE TANK COVER

- Item Number: ONB01-209
- Body construction: GFRC
- Product size: 17.7 x 17.7 x 24.4 in. [45 x 45 x 62 cm]
- Product weight: 47.5 lbs / 21.6 kgs

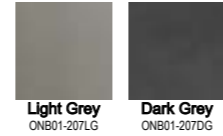
Available colors:



ROUND TANK COVER

- Item Number: ONB01-207
- Body construction: GFRC
- Product size: 17.7 x 17.7 x 24.4 in. [45 x 45 x 62 cm]
- Product weight: 38.5 lbs / 17.5 kgs

Available colors:



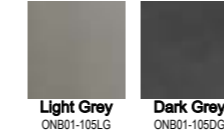
TANK COVER (SOLD SEPARATELY)



SQUARE TANK COVER

- Item Number: ONB01-105
- Body construction: GFRC
- Product size: 17.7 x 17.7 x 24.4 in. [45 x 45 x 62 cm]
- Product weight: 48.4 lbs / 22 kgs
- Top removable

Available colors:



BOULDER TANK COVER

- Item Number: ONB01-117
- Body construction: GFRC
- Product size: 22 x 19.7 x 24.8 in. [56 x 50 x 63 cm]
- Product weight: 48.4 lbs / 22 kgs



COLUMBIA TANK COVER

- Item Number: ONB01-106
- Body construction: GFRC
- Product size: 18.5 x 15 x 24.4 in. [47 x 38 x 62 cm]
- Product weight: 39.6 lbs / 18 kgs



MANCHESTER TANK COVER

- Item Number: ONB01-118
- Body construction: GFRC
- Product size: 18.5 x 19.5 x 24.4 in. [47 x 49.5 x 62 cm]
- Product weight: 50.6 lbs / 23 kgs

SEAT (SOLD SEPARATELY)



BOULDER SEAT

- Item Number: ONE01-102
- Body construction: GFRC
- Product size: 18.5 x 16.5 x 15.4 in. [47 x 42 x 39 cm]
- Product weight: 34.1 lbs / 15.5 kgs



COLUMBIA SEAT

- Item Number: ONE01-101
- Body construction: GFRC
- Product size: 18.5 x 15 x 17.7 in. [47 x 38 x 45 cm]
- Product weight: 30.8 lbs / 14 kgs



WARREN SEAT

- Item Number: ONE01-103
- Body construction: GFRC
- Product size: 15.7 x 15 x 18.1 in. [40 x 38 x 46 cm]
- Product weight: 30.8 lbs / 14 kgs

WIND SCREEN (SOLD SEPARATELY)

Product Description:

- Moulded 304 stainless steel attachment clips
- Clear tempered glass
- It is recommended to purchase together with fire features

- Easy to assemble and clean
- For rectangle, square and round fire pits
Available in different fire pit sizes



WIND SCREEN

- Item Number: ONC05-003A
- Product size:
17.7 x 17.7 x 9.8 in.
[45 x 45 x 25 cm]
- Item Number: ONC05-004
- Product size:
22 x 22 x 7 in.
[56.1 x 56.1 x 18 cm]

FID#	Matching Fire Table List
ONC05-003A	OFG221 / OFG224 -WS
ONC05-004	OFG103 / OFG202 -WS



WIND SCREEN

- Item Number: ONC05-001
- Product size:
24.4 x 24.4 x 7 in.
[62.1 x 62.1 x 18 cm]
- Item Number: ONC05-002
- Product size:
30 x 30 x 7 in.
[76.6 x 76.6 x 18 cm]

FID#	Matching Fire Table List
ONC05-001	OFG104 / OFG105 / OFG110 -WS
	OFG145 / OFG225 -WS
ONC05-002	OFG101 -WS



WIND SCREEN

- Item Number: ONC05-005
- Product size:
44.3 x 14 x 7 in.
[112.6 x 35.6 x 18 cm]
- Item Number: ONC05-027
- Product size:
42.8 x 17.3 x 7 in.
[108.8 x 44 x 18 cm]

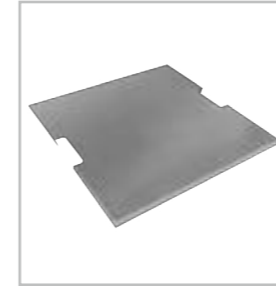
FID#	Matching Fire Table List
ONC05-005	OFG121 / OFG126 / OFG139 / OFG201 -WS
ONC05-027	OFG309 -WS

STAINLESS STEEL LID (SOLD SEPARATELY)

Product Description:

- High quality stainless steel
- Protects fire pan from excess moisture

- No assembly required
- Easy to clean
Available in different fire pit sizes



STAINLESS STEEL LID

- Item Number: ONF01-220D
- Product size:
20.7 x 20.7 x 1 in.
[52.5 x 52.5 x 2.5 cm]

FID#	Matching Fire Table List
ONF01-220D	OFG103



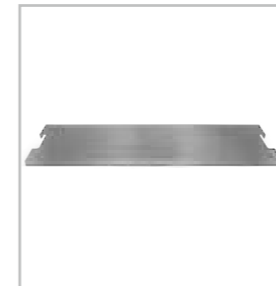
STAINLESS STEEL LID

- Item Number: ONF01-119D
- Product size:
Dia. 19.3 x 1 in.
[Dia. 49 x 2.5 cm]
- Item Number: ONF01-120D
- Product size:
Dia. 20.7 x 1 in.
[Dia. 52.5 x 2.5 cm]

- Item Number: ONF01-120DS
- Product size:
Dia. 20.3 x 1 in.
[Dia. 51.5 x 2.5 cm]

- Item Number: ONF01-126D
- Product size:
Dia. 26.5 x 1 in.
[Dia. 67.3 x 2.5 cm]

FID#	Matching Fire Table List
ONF01-119D	OFG110 -SS
ONF01-120D	OFG104 / OFG105 -SS
ONF01-120DS	OFG145 -SS
ONF01-126D	OFG101 -SS



STAINLESS STEEL LID

- Item Number: ONF01-441D
- Product size:
41 x 15.5 x 0.5 in.
[104.1 x 39.4 x 1.3 cm]
- Item Number: ONF01-442D
- Product size:
42 x 12 x 1 in.
[106.8 x 30.6 x 2.5 cm]

FID#	Matching Fire Table List
ONF01-441D	OFG309 -SS
ONF01-442D	OFG121 / OFG126 / OFG139 / OFG201 -SS

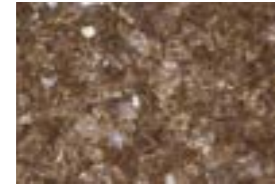
FIRE GLASS

Product Description:

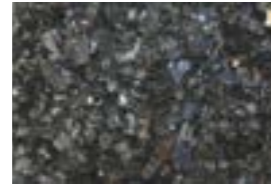
- Tempered Glass
- Hand-screened and sorted to ensure consistency and quality
- It is recommended to purchase together with fire features
- Multiple color options available
- Product size: 0.2 in. (0.5 cm) or 0.5 in. (1.3 cm) available



Carbon Black
ODS02101



Copper
ODS02102



Bronze
ODS02103



Platinum
ODS02105



Aqua Marine
ODS02201



Caribbean Blue
ODS02203



Plastic Bottle

- Product size: 10 x 10 x 10 in. [25.4 x 25.4 x 25.4 cm]
- Product weight: 25 lbs / 11.4 kgs



Plastic Bottle

- Product size: 5.3 x 4.9 x 8.7 in. [13.5 x 12.5 x 22.1 cm]
- Product weight: 11 lbs / 5 kgs

LAVA PEBBLES

Product Description:

- Sourced from lava fields
- Tumbled to create a more uniform shape and unique look
- Recommended purchased with fire features together
- It is recommended to purchase together with fire features



ODS07-B46
Black Lava Pebble
Size Dia. 1.6 in. - 2.4 in.
[4 cm - 6 cm]
G.W : 25lbs / 11.4kgs per carton



ODS07-B68
Black Lava Pebble
Size Dia. 2.4 in. - 3.1 in.
[6 cm - 8 cm]
G.W : 44lbs / 20kgs per carton



ODS07-R46
Red Lava Pebble
Size Dia. 1.6 in. - 2.4 in.
[4 cm - 6 cm]
G.W : 25lbs / 11.4kgs per carton

FIRE LOGS

Product Description:

- Natural wood shape
- Burn clean and do not release any ash or residue into the air
- It is recommended to purchase together with fire features
- Handcrafted
- Cool quickly thus are very safe



ODW01001
CERAMIC



ODW01003
CERAMIC



ODW01005
CERAMIC



ODW01012
CERAMIC



ODW01013
CERAMIC



ODW01010
CERAMIC

NATURAL GAS CONVERSION KIT

Product Description:

- Convert your propane gas unit to run on natural gas
- It must be installed by a qualified installer or gas technical



OCK45-NG01
For 45,000 BTUs / 13.2KW Compatibility

RUBBER HOSE COVER

Product Description:

- Made from durable rubber
- Conceal and secure fire table's propane or natural gas hose
- Weatherproof
- Can be cut to customized size



Item Number: OPG02-GT
Product size: 39.4 x 3.9 x 1.1 in.
[100 x 10 x 2.7 cm]

ETHANOL ECO-FIRE

BIOETHANOL COMBUSTION SYSTEM
INDOOR & OUTDOOR USE
NO SMOKE & ASH
QUICK & EASY INSTALLATION



SYDNEY

ETHANOL FIRE TABLE

ECG01

PRODUCT DESCRIPTION

- Body construction Handcrafted glass-fiber reinforced concrete
- Burner construction 16 gauge, 304 stainless steel
- Burner size 36.1 x 7.9 x 4.5 in.
[91.7 x 20 x 11.5 cm]
- Fuel Ethanol
- Maximum capacity 15L
- Application Both indoor and outdoor
- Maximum heat output 27,000 BTUs / 8 KW
- Warranty 1 year
- Accessories available as below



Available colors:



Specification	Product		Package	
	in.	cm	in.	cm
Length	61.9	157.1	64.8	164.5
Width	29.9	75.8	32.9	83.5
Height	14	35.6	17.3	44
Weight	181 lbs	82 kgs	209 lbs	95 kgs

Standard (Included)





PERTH

ETHANOL FIRE TABLE

ECG02

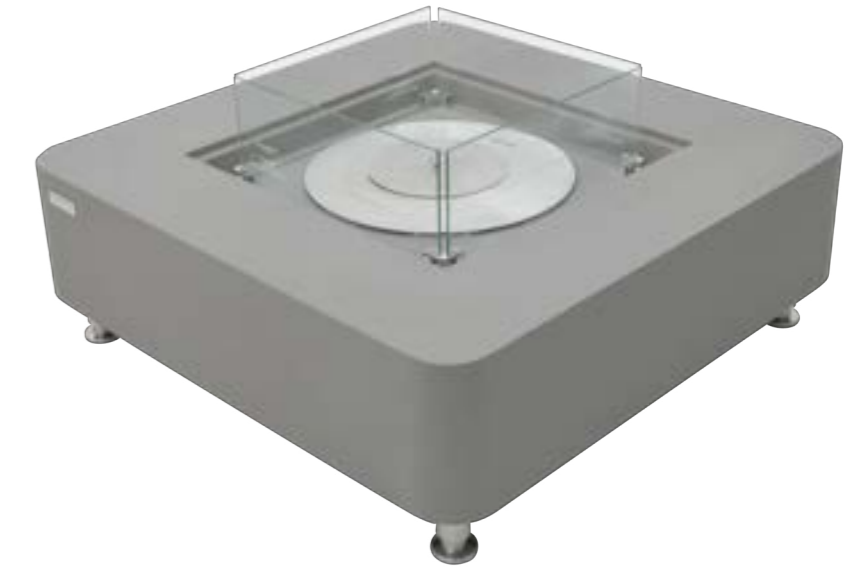
PRODUCT DESCRIPTION

- Body construction Handcrafted glass-fiber reinforced concrete
- Burner construction 16 gauge, 304 stainless steel
- Burner size Dia. 18.1 x 3.9 in.
[Dia. 46 x 10 cm]
- Fuel Ethanol
- Maximum capacity 10L
- Application Both indoor and outdoor
- Maximum heat output Flame adjuster
Maxmum Fire : 61,000 BTUs / 18KW
Medium Fire : 34,000 BTUs / 10KW
Minimum Fire : 6,800 BTUs / 2KW
- Warranty 1 year
- Accessories available as below

Available colors:



Specification	Product		Package	
	in.	cm	in.	cm
Length	40	101.6	42.7	108.5
Width	40	101.6	42.7	108.5
Height	14	35.6	17.3	44
Weight	162 lbs	73 kgs	189 lbs	86 kgs



* Product Color May Vary Due to Photographic Lighting Sources or Your Monitor Settings

PRODUCT DESCRIPTION

GFRG
Glass-Fiber Reinforced Concrete eco-friendly materials, handcrafted to create unique and natural textures.

Stainless Steel Burner
The high-quality, heavy-duty unibody stainless steel burner is built to withstand burning and high temperatures, it is sturdy and durable.

Adjustable Ignition System
The flame can be adjusted by push-pull lid according to the actual need.

Quick-Detach Knob
With the quick-detach design, the wind screen could be detached easily and stwich the fire pit to a table with the lid in less than one minute.

Wind Screen
Wind and fire guard

Articulating Feet
Made by stainless steel for adjusting level

Close

Open

GFRG
Glass-Fiber Reinforced Concrete eco-friendly materials, handcrafted to create unique and natural textures.

Stainless Steel Burner
The high-quality, heavy-duty unibody stainless steel burner is built to withstand burning and high temperatures, it is sturdy and durable.

Adjustable Ignition System
When the fire table is cooled down completely, take the metal plates to adjust the burner flame depending on your needs.

Quick-Detach Knob
With the quick-detach design, the wind screen could be detached easily and stwich the fire pit to a square table with the lid in less than one minute.

Wind Screen
Wind and fire guard

Articulating Feet
Made by stainless steel for adjusting level

Minimum Fire **Medium Fire** **Maxxum Fire**

DISTRIBUTION MAP



ELEMENTI EU

FRANCE, ITALY, SPAIN,
SWITZERLAND, PORTUGAL
www.elementieu.com

ELEMENTI US

USA
www.elementifire.com

ELEMENTI DE

GERMANY, NETHERLAND,
BELGIUM, LUXEMBOURG
www.elementi.de

ELEMENTI CA

CANADA
www.elementifires.ca

ELEMENTI AS

NORWAY, SWEDEN, DENMARK,
FINLAND
www.elementi.no

ELEMENTI UK

UK, IRELAND
www.elementifires.co.uk

ELEMENTI SK

SLOVAKIA, CZECH REPUBLIC,
AUSTRIA, POLAND
www.elementifire.sk
www.elementifire.cz