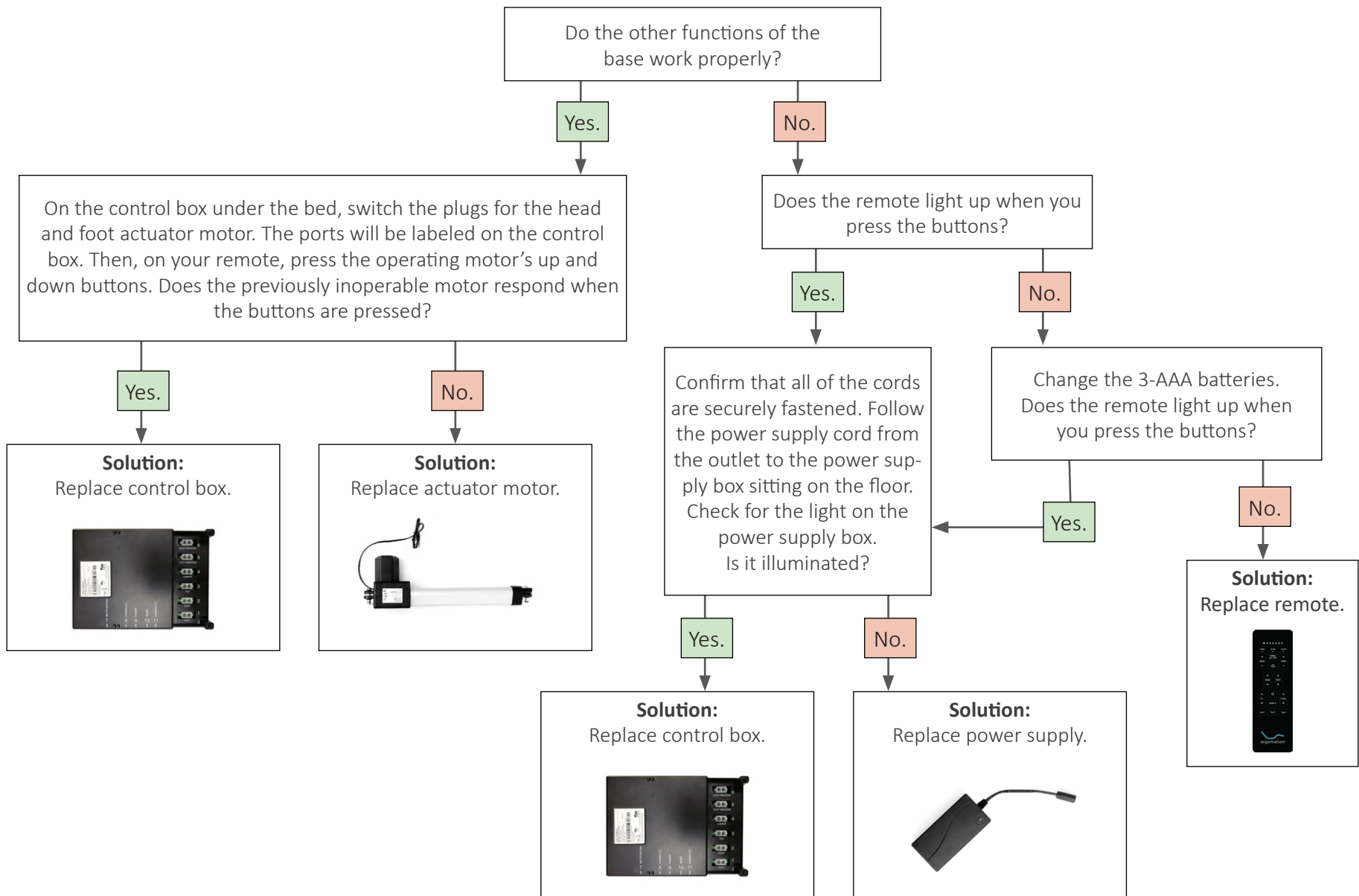
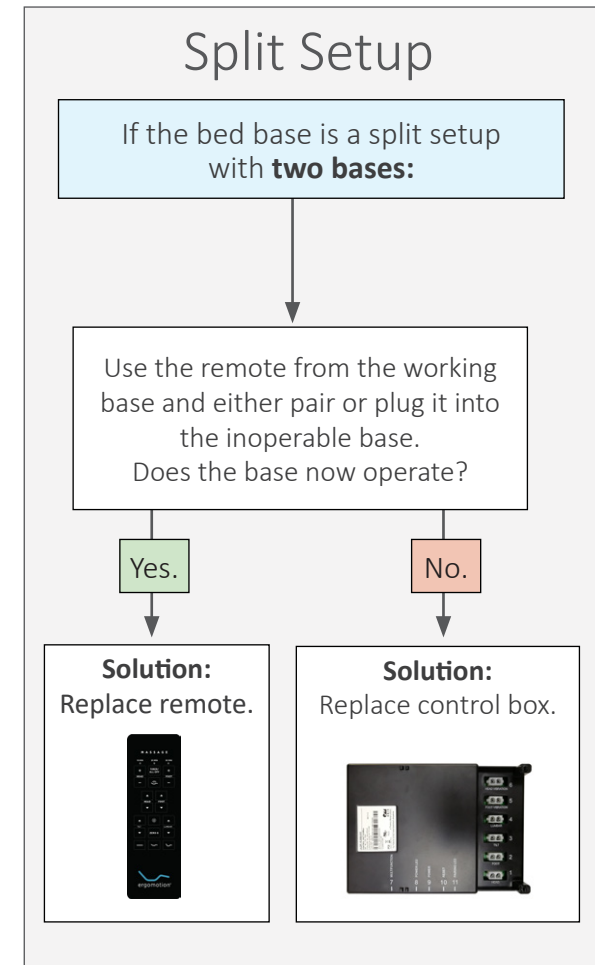
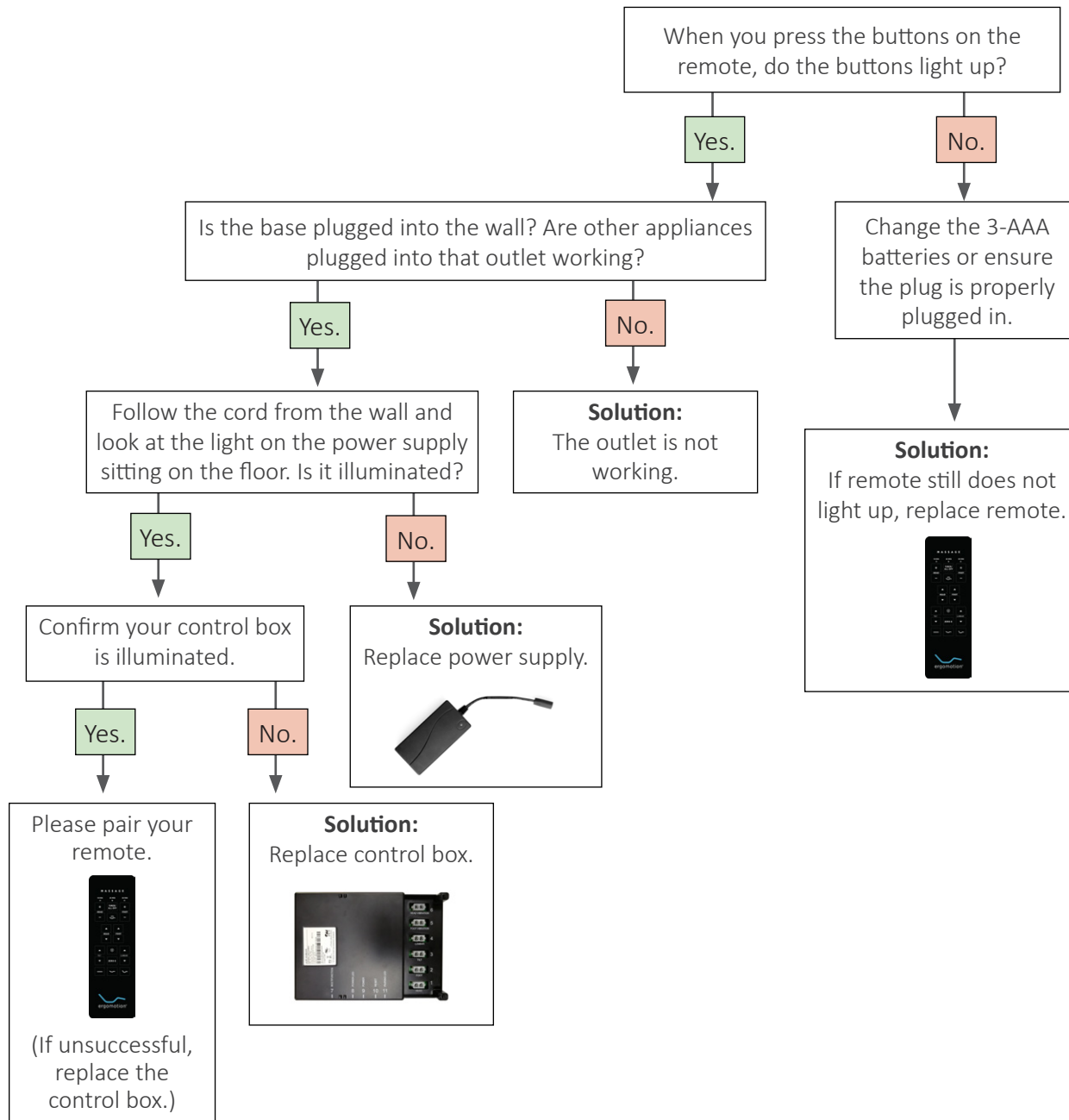


# Inoperable Motor



# Inoperable Base



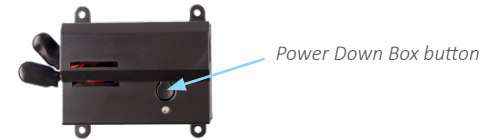
# Re-pair Remote to Base

## Bases with Power Down Strip:



1. Unplug the base from power source for 10 seconds.
2. Plug the base back in and within 10 seconds press and hold the pairing button on the back of the remote, the light will begin to flash then become a continuous solid light. Both lights will turn off; the remote has been paired to the new control box.

## Bases with Power Down Box:



1. Remove back cover from remote control. Remove and replace batteries.
2. Double click the button on the Power Down Box. The light will illuminate.
3. Press and hold button on the back of the remote. The light will begin to flash then become a continuous solid light. Both lights will turn off; the remote has been paired to the new control box.