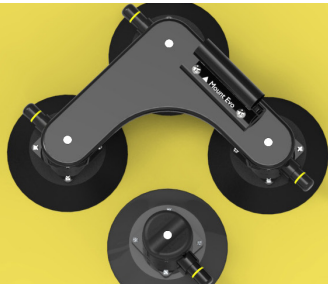
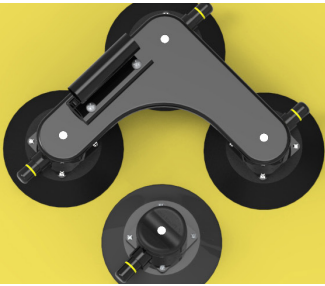


▲ Mount Evo  
**Solo**  
Single bike vacuum mount



## Solo

Solo is the most versatile bike mount around, with the ability to mount any bike on any car in only a few minutes. Solo is a single-bike vacuum cup mount designed and assembled in Oxfordshire, UK.

Four powerful vacuum cups generate a combined vacuum rating of 400kg, more than enough suck for your sub-20kg bike. The baseplate is manufactured using high quality CNC-machined HDPE polymer which enables Solo to be compact and light. So, it's ideal for travel as well as easy to store.

No matter your discipline; road or MTB, our through-axle fork mount is designed to deliver for everyone. A variety of fork adaptors and a quick release skewer are supplied with every order and the rear wheel cradle is designed with an array of wheel widths in mind.



## Modular

Like all our mounts, Solo is modular. This means the vacuum cups can be removed from the baseplate and used in conjunction with any of our other mounts. We've done this to significantly reduce the cost for those of you, who like us, not only cycle but ski and surf too. The vacuum cups are attached to each baseplate using a single high-tensile screw. This allows our modular system to be safe and secure while not compromising the ease with which you can change each modular attachment. So, if you cycle and ski, cycle and surf or all three, there is no better solution than our series of modular mounting systems.



## Product Contents

- Baseplate with through-axle fork mount
- Rear wheel cradle with hook & loop fastener
- 4x Modular vacuum cups
- Through-axle adaptors (5x100 quick release, 12x100, 15x110 'Boost')
- Quick release skewer
- 4x High-tensile screws (3x M6 x 12mm and 1x M6 x 8mm)
- 4mm Hex key
- Crank strap
- Vacuum cup lubricant (5g)

## Instruction for use

Before installing Solo, ensure the car and vacuum cups are clean.

### 01

Step one, fixing a bike to Solo. Remove the front wheel of the bike and remove the through-axle from the forks or quick release skewer from your front wheel. Locate the appropriate through-axle adaptors provided in the fork holder. If using a quick release skewer, use the 5 x 100 adaptor. Now secure the forks on the holder as if it were the wheel its replacing.



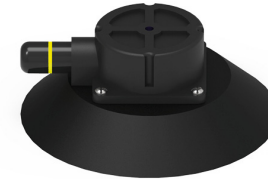
### 02

Step two, placing the bike on the car. Now that Solo is secured to the bike, place the bike on top of the car where you would like it positioned. Ensure the bike is pointing forwards, straight and not mounted to a flexible or moving component.



### 03

Step 3, securing Solo. Now the bike and Solo are fixed together and positioned, you need to repeatedly pump each of the four plungers on the side of the vacuum cup. Once the yellow band on the side of each plunger is no longer visible, the vacuum cup is secure.



### 04

Step 4, positioning the rear wheel cradle. Lift the rear wheel of the bike and place the rear wheel cradle beneath the rear wheel. Lower the bike wheel onto the cradle. Like the other vacuum cups, secure the cradle by repeatedly pumping the plunger on the side of the vacuum cup until the yellow band is no longer visible. The rear wheel cradle is now secure.



### 05

Step 5, securing the rear wheel to the cradle. Feed the straps of the cradle through the spokes of the wheel and fasten the hook and loop strap together tightly. Make sure the wheel is secured ensuring there is no movement between the wheel and the cradle.



The bike is now secured. Before setting off double check the yellow band on each vacuum cup is not visible and that the rear wheel is fastened tightly to the cradle. Give the bike a reassuring rock, providing there is no movement of the bike and Solo you are good to go.

Once on the go we recommend you periodically check that the safety band on each of the vacuum cups isn't visible. Leave a maximum time between checks of 6 hours. If you're using Solo on a long journey use rest stops or services as an opportunity to check the vacuum cup indicators before setting off again.

## Removal

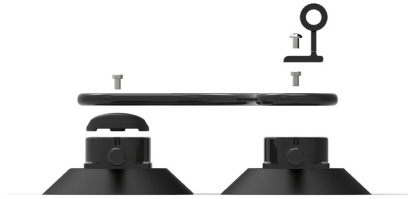
To remove or reposition Solo, simply lift the edge of each cup using the raised tabs. This breaks the seal and allows the removal of Solo. Once removed, follow the installation instructions in reverse to remove the attached bicycle. Always remember to re-attach the vacuum cup covers after use.

## Instruction for modular use

All of our mounts use modular vacuum cups, allowing you to remove and use them in conjunction with any of our other mounts.

### 01

Step 1, using the supplied hex key to unscrew the single 12mm long screws (8mm for rear wheel cradle) holding the vacuum cup to the baseplate. This will detach the vacuum cup from the baseplate allowing you to attach it to another mount.



### 02

Step 2, to attach the vacuum cup to another mount or reattach it to Solo, simply align the hole of the vacuum cup with the baseplate and tighten the 12mm screws (8mm for rear wheel cradle). Tighten the screws using the supplied hex key (Do not over tighten). The vacuum cup is now reattached to the baseplate.



## Maintenance

To ensure the longevity of Solo, regular maintenance is recommended. Each time you use Solo, you should clean the surface you're mounting to and the face of the vacuum cup itself, this is to stop any dirt breaking the seal between car and Solo and preventing scratching of the surface. Like the exterior of your car, Solo can get dirty, so to stop unnecessary wear from salt, grit and road debris wash the entire mount regularly, preventing any build-up of dirt around the vacuum pump and mounting system. Washing Solo is very easy; use a sponge and water to wipe off any dirt, should you need anything stronger use warm water or even car shampoo. Please avoid using harsh chemicals as this can damage the rubber of the vacuum cups and cause them to fail prematurely.

Each pump on the side of the vacuum cups will also need cleaning, how often will depend on how heavily Solo is used. On average we recommend every few months, although we suggest you do it more regularly if Solo frequently gets visibly dirty. To clean the vacuum pumps, you need to remove the plunger by pulling it out of the cylinder it sits in. Once removed, using a cloth or paper towel and water, wipe away any dirt that has built up inside the pump cylinder. Dry thoroughly and lubricate the seal with the silicone lube provided before inserting the plunger back into position.

The vacuum cups should be stored with the provided covers attached as this stops the vacuum cups from deforming whilst not in use. Leaving the covers off for prolonged lengths of time can cause the face of the vacuum cups to warp, making it difficult for the vacuum cup to create a seal. Before packing away or setting up on the car you should inspect each vacuum cup. You are checking for stiffness, cracks, rough patches or cuts. Any of these will allow air to escape, stopping the adhesion of the vacuum cup to the car and causing it to fail.

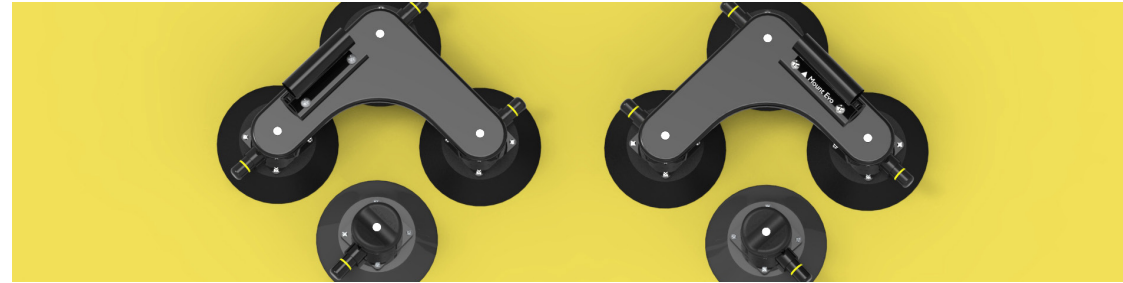
The maintenance of Solo is to ensure the longevity and most importantly the safety of our product. Keeping Solo clean, ensuring it is stored correctly and regularly inspecting it will extend the product's life. Providing the above maintenance is carried out our products come with one year of warranty, allowing you to use them with peace of mind.

## Warranty

All of our products come as standard with one year of warranty from the purchase date. If you have any issues or questions, you can contact us by email - [info@mounttevo.co.uk](mailto:info@mounttevo.co.uk)

## Feedback

Your feedback is very important to us. We'd love to know what we're doing well but also what we're not. Your feedback will help us identify our strengths and weaknesses ultimately improving our products and service for you and our community. You can leave a review at [mounttevo.co.uk](http://mounttevo.co.uk)



## Disclaimer

Never mount a bike backwards, sideways or at an angle, always mount forwards  
Never mount a bike using a part of the car that flexes easily or moves whilst driving  
Never use Solo if any of the components are not functioning as intended  
Never use Solo on a car that has been vinyl wrapped  
Never use Solo with a bike that weighs more than 20kg  
Always ensure the forks are secured safely to the through-axle mount  
Always ensure the correct through-axle adapters are used.  
Always ensure the vacuum cup and mounting surface are thoroughly cleaned before use  
Adhere to the maintenance guide of the product to maintain the warranty of the item  
Always ensure the indicator band on each vacuum cup isn't visible before starting each journey  
Always periodically check the vacuum cup safety band isn't visible, allow a maximum time between checks of 6 hours



## Contact Us

For any enquiries please don't hesitate to get in contact.  
Email - [info@mounttevo.co.uk](mailto:info@mounttevo.co.uk)

# Mount Evo

MountEvo.co.uk

@MountEvo

