



**Medium**

## RENA S3

### The comfortable all-round safety shoe

Surround yourself with comfort and protection wearing the RENA in all conditions. This safety shoe with a rubber outsole has the highest resistance to chemicals, heat, hydrocarbons, acids, and hydrolysis.

Upper	Barton Action Leather
Lining	Mesh
Footbed	SJ foam footbed
Midssole	Steel
Toecap	Steel
Safety standard	S3 / HRO, SRC
Size range	EU 36-45 / UK 3.5-10.5 US 4.0-11.5 / CM 23.5-29.5
Sample weight	0.670 kg
Norms	EN ISO 20345:2011 ASTM F2413:2018



BLK



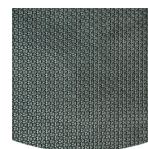
#### Heat resistant outsole (HRO)

The outsole resists high temperatures up to 300°C.



#### SRC slip resistance

Slip resistant soles are one of the most important features of safety and occupational footwear. SRC slip resistant soles pass both SRA and SRB slip resistant tests, they are tested on both steel and ceramic surfaces.



#### Rubber outsole

Rubber outsoles provide versatile functions that make them suitable for many areas of application: excellent cut resistance, heat and cold resistance, high flexibility at cold temperatures, resistance against oil, fuel and many chemicals.

**Industries:**

Automotive, Chemical, Cleaning, Food & beverages, Logistics, Oil & Gas

**Environments:**

Cold environment, Extreme slippery surfaces, Warm surfaces

**Maintenance instructions:**

To extend the life of your shoes, we recommend to clean them regularly and to protect them with adequate products. Do not dry your shoes on a radiator, nor nearby a heat source.

	Description	Measure unit	Result	EN ISO 20345
<b>Upper</b>	<b>Barton Action Leather</b>			
	Upper: permeability to water vapor	mg/cm <sup>2</sup> /h	2.2	≥ 0.8
	Upper: water vapor coefficient	mg/cm <sup>2</sup>	25.0	≥ 15
<b>Lining</b>	<b>Mesh</b>			
	Lining: permeability to water vapor	mg/cm <sup>2</sup> /h	59.9	≥ 2
	Lining: water vapor coefficient	mg/cm <sup>2</sup>	480	≥ 20
<b>Footbed</b>	<b>SJ foam footbed</b>			
	Footbed: abrasion resistance	cycles	400	≥ 400
<b>Toecap</b>	<b>Steel</b>			
	Impact resistance toecap (clearance after impact 100J)	mm	NA	NA
	Compression resistance toecap (clearance after compression 10kN)	mm	NA	NA
	Impact resistance toecap (clearance after impact 200J)	mm	17.0	≥ 14
	Compression resistance toecap (clearance after compression 15kN)	mm	21.0	≥ 14

Sample size: 42

Our shoes are constantly evolving, the technical data above may change. All product names and brand Safety Jogger, are registered and may not be used or reproduced in any format, without written consent from us.