

CERTIFICATE OF ANALYSIS

GENERAL INFORMATION

SKU: GS0124

Lot: A188

Package size: 0.1 mg

Protein: mouse synuclein (NP_001035916; Uniprot O55042) (O-GlcNAc T72)

Peptide Sequence (N-Term C-Term): Ac-CAA EKT(O-GlcNAc)KQGVAE -OH

Peptide Name: GP-156

Backbone:

1A 280 [mg/mL]*	12.3	MW [g·mol ⁻¹]	1479.7	QC (MS & HPLC-RP)	Passed
Charged at pH 7*	0	Found M+H [g·mol ⁻¹]	1481.2		
Isoelectric Point*	7.06	Ext. coeff. [l·mol ⁻¹ ·cm ⁻¹]*	120		
Counter Ions	Trifluoroacetate	% Peak Area by HPLC	≥ 90%	STORAGE CONDITIONS:	
		Found % Peak Area by HPLC	98%	-20°C	

*Theoretical values without modifications

Purification(s)

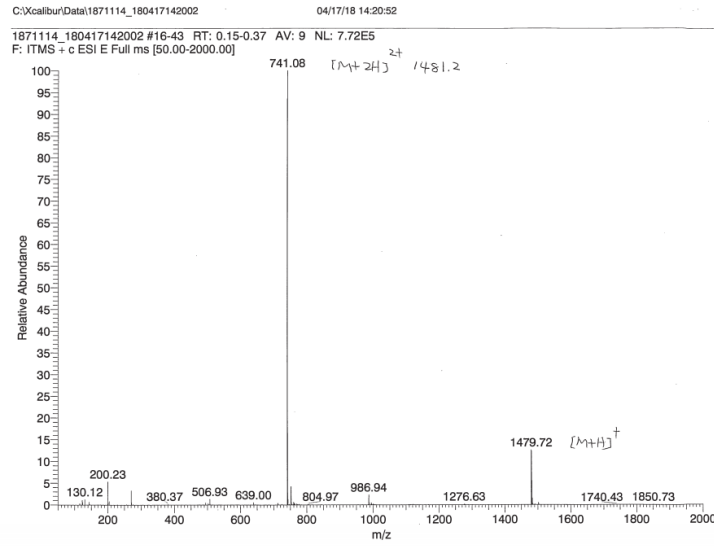
HPLC-RP

Peptide Reconstitution and storage

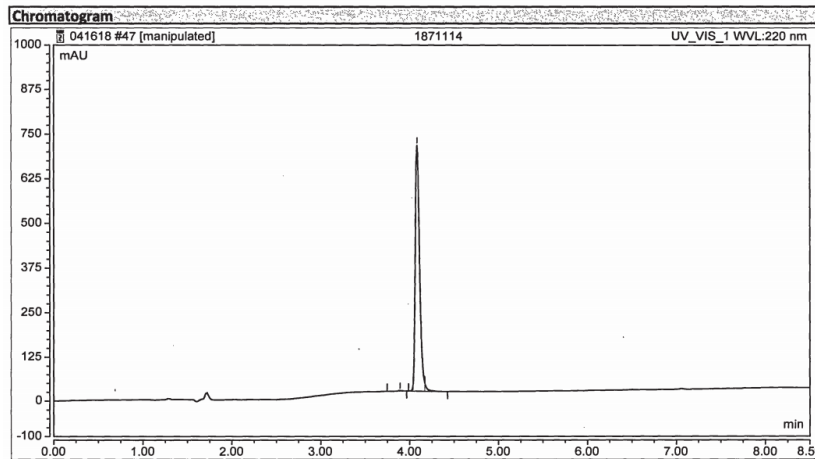
Please equilibrate the vial to room temperature prior opening.

Dissolve peptide in small volume of pure water before adding the desired buffer. Sonication may help dissolution in water. Addition of small amount of aqueous acetic acid for a basic peptide, or aqueous ammonia for acidic peptide could be necessary.

Reconstituted peptides can be stored frozen at -20°C for a very short period but please note that repeated freeze-thaw cycles have to be avoided.



Mass Spec. Data to analyze identity and homogeneity of GP-156 peptide.



HPLC-RP chromatogram of purified GP-156 peptide.