

CERTIFICATE OF ANALYSIS

GENERAL INFORMATION

SKU: GS0216

Lot: A307

Package size: 0.1 mg

Protein: Human O-GlcNAcase (OGA) (Uniprot O60502) (S405)

Species: *Homo sapiens*

Peptide Sequence (N-Term C-Term): Ac- CRQVAHS(O-GlcNAc)GAKAS -OH

Peptide Name: GP-229

Backbone:

1A 280 [mg/mL]*	12.2	MW [g·mol ⁻¹]	1459.8	QC (MS & HPLC-RP)	Passed
Charged at pH 7*	3.0	Found M+H [g·mol ⁻¹]	1460.0		
Isoelectric Point*	11.5	% Peak Area by HPLC	≥ 90%	STORAGE CONDITIONS:	
		Found % Peak Area by HPLC	91%	-20°C	

*Theoretical values without modifications

Purification(s)

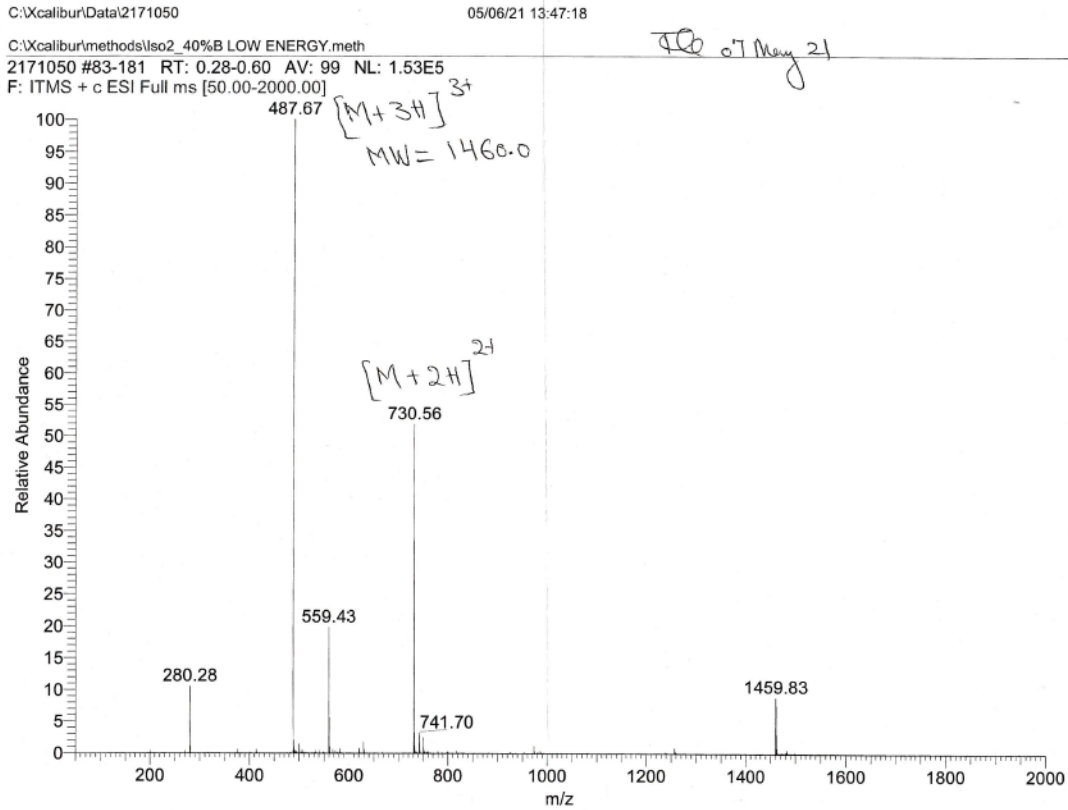
HPLC-RP

Peptide Reconstitution and storage

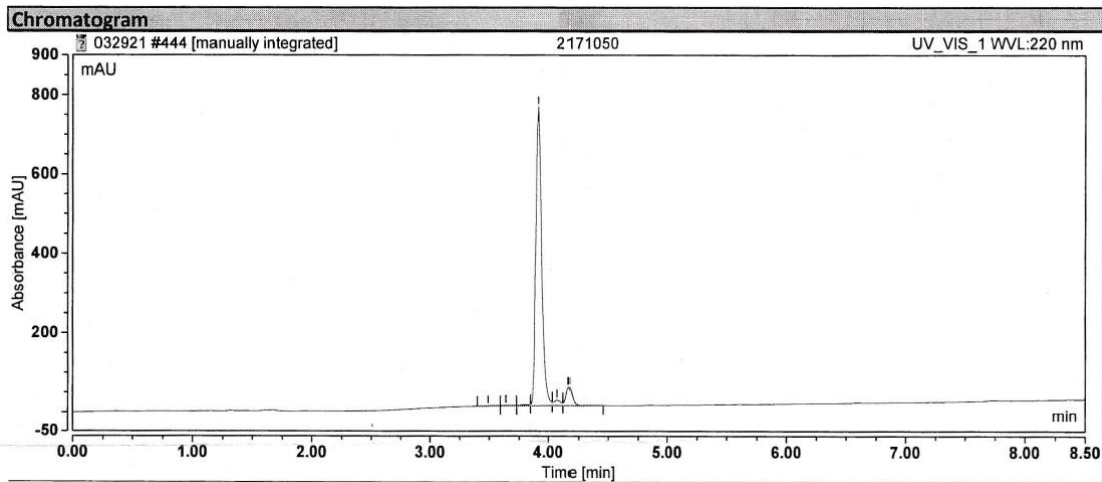
Please equilibrate the vial to room temperature prior opening.

Dissolve peptide in small volume of pure water before adding the desired buffer. Sonication may help dissolution in water. Addition of small amount of aqueous acetic acid for a basic peptide, or aqueous ammonia for acidic peptide could be necessary.

Reconstituted peptides can be stored frozen at -20°C for a very short period but please note that repeated freeze-thaw cycles have to be avoided.



Mass Spec. Data to analyze identity and homogeneity of GP-229 peptide.



HPLC-RP chromatogram of purified GP-229 peptide.