

## CERTIFICATE OF ANALYSIS

UMab4-P

Cat. #: GS0220

Lot: A328

Package size: 0.1 mg

**Description** A human monoclonal IgG4 13C6 and 15N labeled Arginine and Lysine

**Tested applications** A280, SDS-Page

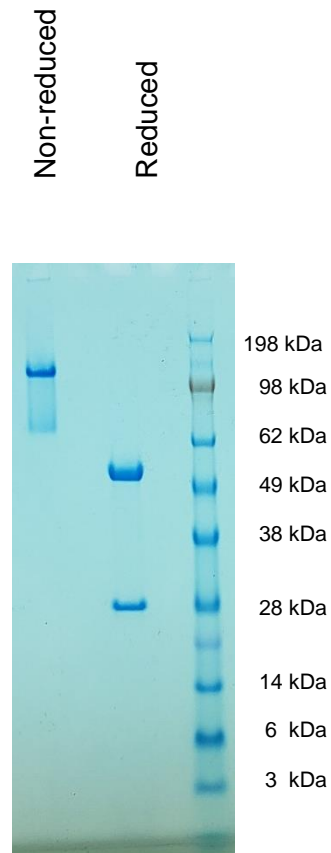
**Form** Speed vac dried from 10mM Ammonium Acetate, pH 6.8

**Storage** Frozen (-20°C or lower). Store at 4°C when resuspended or aliquot and freeze.

**Lot specific data:**

**Analysis:**

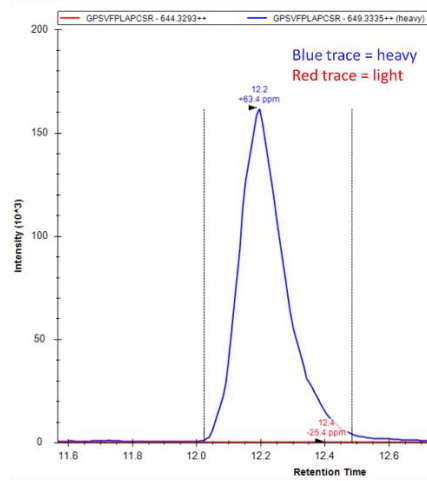
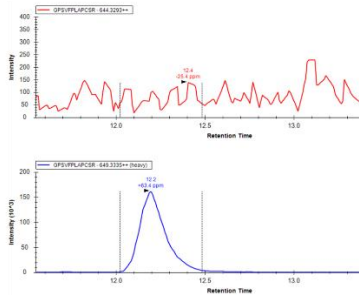
**4-12% Bis-Tris Gel**



>99% isotope incorporation as demonstrated by LC-MS of trypsin digested product.

IgG4 – 5ug injection  
 Peptide ending in Arg  
 GPSVFPLAPCSR (644.33+, 649.33+)  
 C = carbamidomethyl  
 Skyline analysis

Total ratio 0.0007 (Total peak area ratio)  
 Ratio\*100% = 0.1  
 % incorporation = **99.9%** (from Skyline)



IgG4 – 5ug injection  
 Peptide ending in Lys  
 NQVSLTCLVK (1161.63, 1169.64)  
 C = carbamidomethyl  
 Skyline analysis

Total ratio 0.002 (Total peak area ratio)  
 Ratio\*100% = 0.2  
 % incorporation = **99.8%** (from Skyline)

