

CERTIFICATE OF ANALYSIS

GENERAL INFORMATION

SKU: GS0137

Lot: A200

Package size: 0.1 mg

Protein Kelch-like ECH-associated protein 1 (Keap1) (Homo sapiens) NP_036421; Uniprot Q14145 (O-GlcNAc S104)

Peptide Sequence (N-Term C-Term): Ac-CVLASSS(O-GlcNAc)PVFKA -OH

Peptide Name: GP-181

Backbone:

1A 280 [mg/mL]*	12.1	MW [g·mol ⁻¹]	1453.8	QC (MS & HPLC-RP)	Passed
Charged at pH 7*	1.0	Found M+H [g·mol ⁻¹]	1453.8		
Isoelectric Point*	10.1	% Peak Area by HPLC	≥ 90%	STORAGE CONDITIONS:	
Counter Ions	Trifluoroacetate	Found % Peak Area by HPLC	98%	-20°C	

*Theoretical values without modifications

Purification(s)

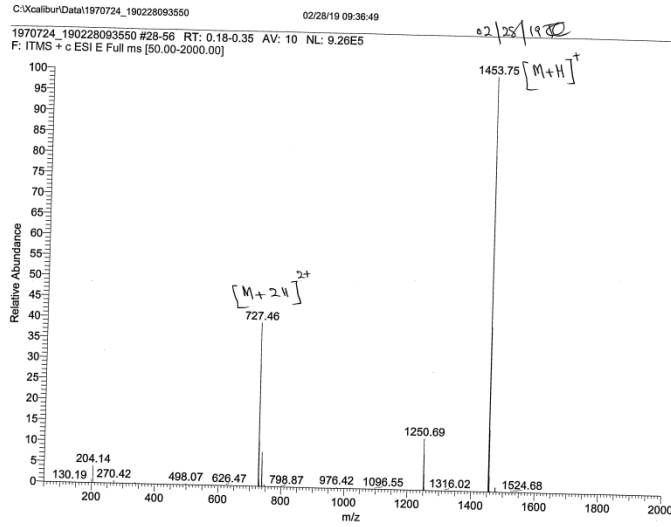
HPLC-RP

Peptide Reconstitution and storage

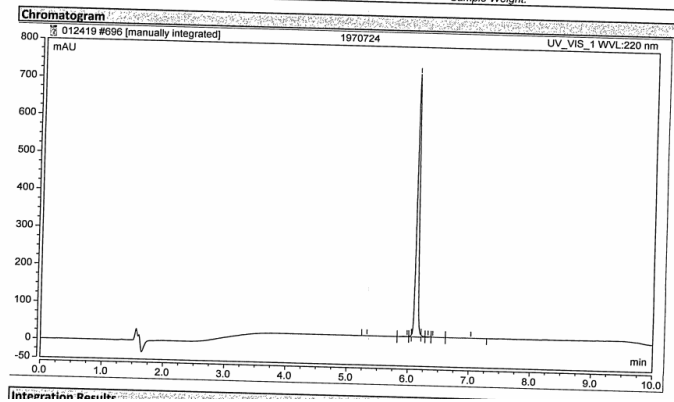
Please equilibrate the vial to room temperature prior opening.

Dissolve peptide in small volume of pure water before adding the desired buffer. Sonication may help dissolution in water. Addition of small amount of aqueous acetic acid for a basic peptide, or aqueous ammonia for acidic peptide could be necessary.

Reconstituted peptides can be stored frozen at -20°C for a very short period but please note that repeated freeze-thaw cycles have to be avoided.



Mass Spec. Data to analyze identity and homogeneity of GP-181 peptide.



HPLC-RP chromatogram of purified GP-181 peptide.