

CERTIFICATE OF ANALYSIS

GENERAL INFORMATION

SKU: GS0136

Lot: A199

Package size: 0.1 mg

Protein: Kelch-like ECH-associated protein 1 (Keap1) (Homo sapiens) NP_036421; Uniprot Q14145 (aa100-110).

Peptide Sequence (N-Term C-Term): Ac-CVLASSSPVFKA -OH

Peptide Name: P-180

Backbone:

1A 280 [mg/mL]*	10.4	MW [g·mol ⁻¹]	1250.6	QC (MS & HPLC-RP)	Passed
Charged at pH 7*	1.1	Found M+H [g·mol ⁻¹]	1250.7		
Isoelectric Point*	10.1	% Peak Area by HPLC	≥ 90%	STORAGE CONDITIONS:	
Counter Ions	Trifluoroacetate	Found % Peak Area by HPLC	95%	-20°C	

*Theoretical values without modifications

Purification(s)

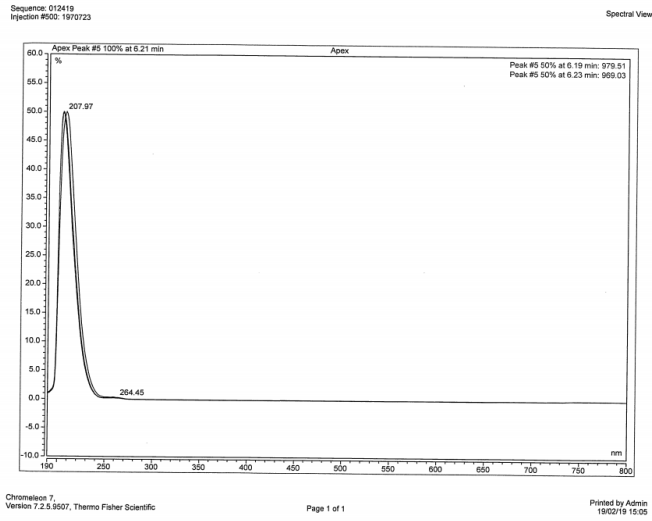
HPLC-RP

Peptide Reconstitution and storage

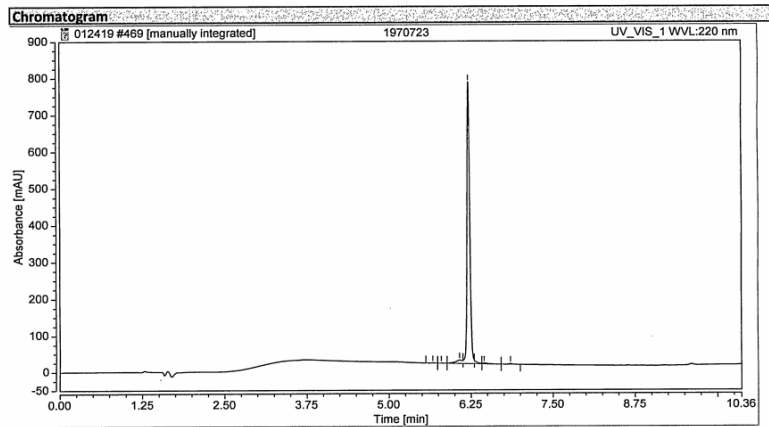
Please equilibrate the vial to room temperature prior opening.

Dissolve peptide in small volume of pure water before adding the desired buffer. Sonication may help dissolution in water. Addition of small amount of aqueous acetic acid for a basic peptide, or aqueous ammonia for acidic peptide could be necessary.

Reconstituted peptides can be stored frozen at -20°C for a very short period but please note that repeated freeze-thaw cycles have to be avoided.



Mass Spec. Data to analyze identity and homogeneity of P-180 peptide.



HPLC-RP chromatogram of purified P-180 peptide.