

GlycoScientific

CERTIFICATE OF ANALYSIS

IRS2 (GlcNAc T1155) PAb

Cat. #: GS0013

Lot: A029

Package size: 0.2 ml

Description Rabbit polyclonal antibody to human insulin receptor substrate 2 (IRS2, NP_003740) modified at threonine 1155 (T1155) with a O-linked N-acetylglucosamine (O-GlcNAc). GS0013 preferentially binds to the O-GlcNAcylated version of IRS2. Amino acid sequence of the region flanking T1155 suggests cross-reactivity with IRS2 of multiple species including mouse, rat, chicken, hamster and primates.

Tested applications ELISA, Western blot.

Target sequence ETFSST(O-GlcNAc)TTVTPS

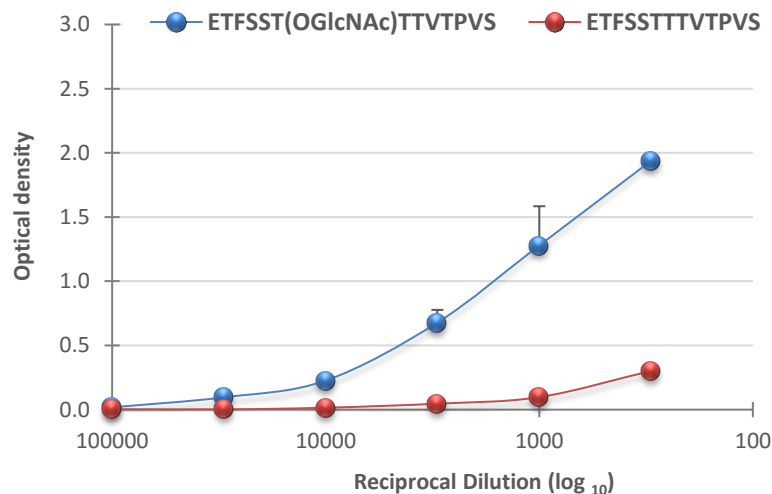
Isotype Mixed, predominantly IgG.

Storage buffer PBS, pH 7.2-7.5.

Storage Frozen (-20°C or lower). Store at 4°C when thawed or aliquot and refreeze. Avoid repeated freeze/thaw cycles.

Example applications

ELISA ELISA plates were coated with the peptides indicated in the graph below, conjugated to BSA, and detected with dilutions of GS0013. The secondary antibody is a goat anti-rabbit whole IgG.



GlycoScientific

Western Total cell lysates from HEK (human embryonic kidney cells) were separated by reducing SDS-PAGE. The first 3 panels were probed with IRS2 (GlcNAc T1155) PAb (GS0013) at a 1/1000 dilution and detected with a secondary antibody to rabbit IgG. The right panel was detected with a 3rd party monoclonal antibody (MAb). Panel 2 included a blocking peptide at 1 mg/ml that includes the sequence ETFSSTTTVTPVS (available as IRS2 (GlcNAc T1155) peptide, catalog number GS0017). Panel 3 included a blocking peptide at 1 mg/ml that includes the sequence ETFSST(O-GlcNAc)TTVTPVS (available as IRS2 (T1155) peptide, catalog number GS0016). The apparent molecular weight of IRS2 is approximately 110 kDa. The identities of the other bands are unknown.

