



**Carefully selected hair
revives natural skin beauty
Brushing · Skin · Care**

Conceived to realize smooth skin for lively women.

Thus “SUVÉ” was born.

Revive and soothe your skin with select silky hair.

Gentle yet contoured feeling.

“SUVÉ” brushing skin care,

presents a new style of skin care.



Nose cleansing brush

Super fine pine squirrel tip to cleanse the delicate contours and T-zone with an easy touch and gentle feeling, while removing pore-clogging debris and sebum. This new style of skin care will soon become customary.

Size: W25×D30×H63 mm

Material: Pine squirrel hair / Walnut

Usage: 1 to 3 times per week

Face cleansing brush

A brush of highest quality goat hair that gently massages your skin as it cleans. The fine, rich foam helps retain moisture to soothe and enhance your radiant soft skin.

Size: W35×D44×H73 mm

Material: Goat hair / Synthetic / Walnut

Usage: once a week



Tray

The tray holds the Soap dish, Face cleansing brush, Nose cleansing brush and Naderu brush stand. It makes a simple and elegant addition to your private space.

Size: W250×D120×H20 mm

Material: Walnut

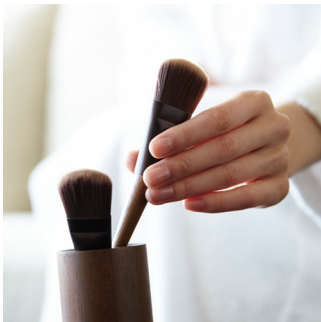


Soap dish

Made from bone china and designed based on the traditional Japanese tea cup. Tear shaped ridges in the dish allows for easy soap foaming.

Size: W117×D102×H47 mm

Material: Bone china, unglazed



Hand treatment brush

Dissimilar hair tips caress the lines of the hand one by one to gently stimulate and delight your hand. As a treatment brush to caress lightly from finger to arm or a nail brush to gently polish the nails, your hand skin breathes healthy and attractive.

Size: W55×D28×H73 mm

Material: Badger hair / Raccoon hair / Walnut

Usage: Everyday



Naderu brush

Twin brushes reproduce professional therapists' soft and effective touch and stimulates lymph drainage. Bring the elegant moments of the beauty salon home and awaken your natural and radiant beauty.

Size: W27×D16×H145 mm

Material: Synthetic / Aluminum / Walnut

Usage: Everyday



Brush stand

A simple and elegant walnut brush holder designed to harmonize in your living room, bedroom or any decor.

Size: ϕ 56×H90 mm

Material: Walnut



Body brush long

Brush tips create foamy rich lather and gently cleanse the skin leaving a feathery light feeling. Gentle enough for sensitive skin and use comfortably for children.

Size: W53×D288×H56 mm

Material: Goat hair / Synthetic / Walnut

Usage: Everyday



Body brush short

Rich soft quality short version body brush conveniently compact to fit your palm. Excellent for washing those areas that require a firmer hand such as neck and décolleté.

Size: W53×D60×H48 mm

Material: Goat hair / Synthetic / Walnut

Usage: Everyday



Body brush long semi-hard

Comfortable firmness of the semi-hard hair tip. Badger hair, famous for shaving brushes, cleanse your body thoroughly with rich sudsy lather without losing the volume of hair even when wet.

Size: W53×D288×H56 mm

Material: Badger hair / Walnut

Usage: Everyday



Body brush short semi-hard

Comfortably firm like the long type. The Body brush short semi-hard is conveniently compact to fit the palm of your hand. Excellent for washing those areas that require a firmer hand such as neck and décolleté without losing the volume of hair even when wet.

Size: W53×D60×H48 mm

Material: Badger hair / Walnut

Usage: Everyday



Body brush long hard

Body brush hard type with a superbly balanced mix of boar bristle, goat, and synthetic hair. Supple and resilient to the skin. Recommended for thoroughly cleansing and sebum removal.

Size: W53×D288×H56 mm

Material: Boar bristle / Goat /
Synthetic Hair / Walnut

Usage: Everyday

Body brush short hard

Hard type body brush conveniently compact to fit the palm of your hand. Supple and resilient hair can also be used for dry brushing for body care or foot care.

Size: W53×D60×H48 mm

Material: Boar bristle / Goat /
Synthetic Hair / Walnut

Usage: Everyday



