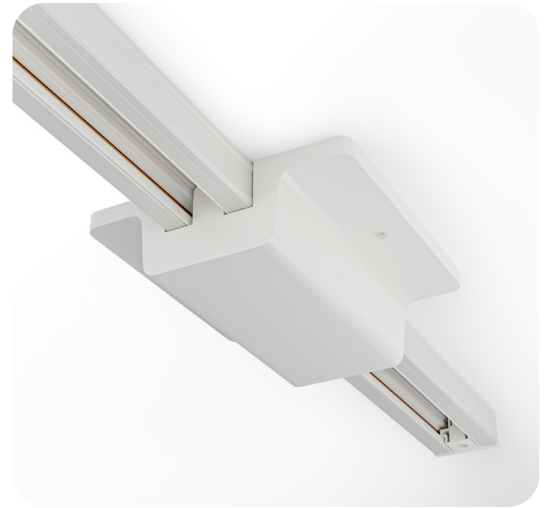
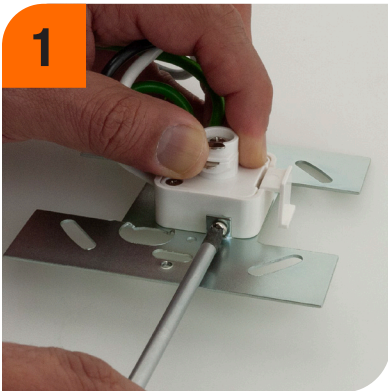


Track Light Installation Instructions

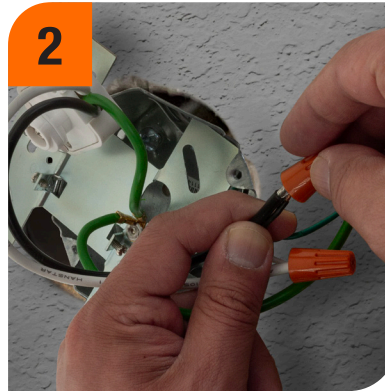


Warning: Ensure to **TURN OFF** the power to the area where you'll be working for safety purposes. Failure to do so may result in electrical hazards or accidents. Always prioritize safety by disconnecting the power source before beginning any work.



1

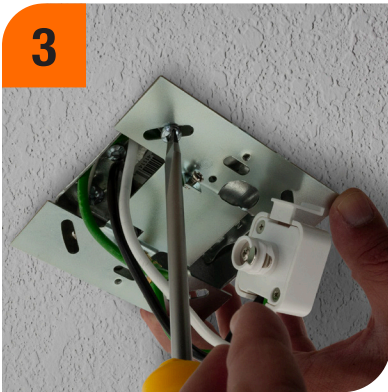
- To separate the track connector from the mounting plate, simply loosen the two screws.



2

- Connect the track connector to the wires from the electrical box using the provided wire connector caps.

** Make sure to connect the same color wire to each wire.*



3

- Fasten the mounting plate to the electrical box using the provided screws.



4

- Attach the track channel to the mounting plate using the two screws on the sides.



5

- Connect the track connector to the track channel by twisting it.

** Make sure to twist it in the correct direction.*



6

- Screw the canopy to the mounting plate using the provided screws to cover the wires.