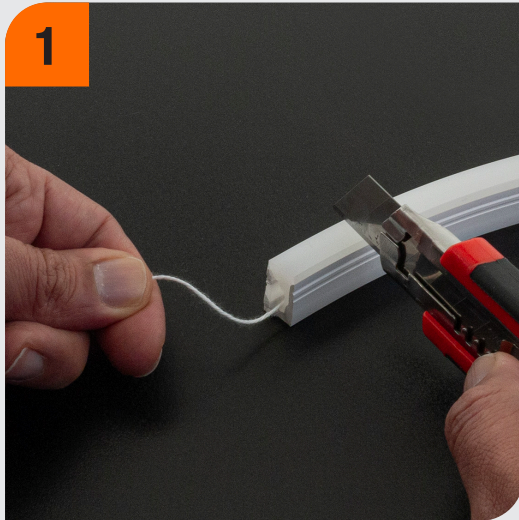
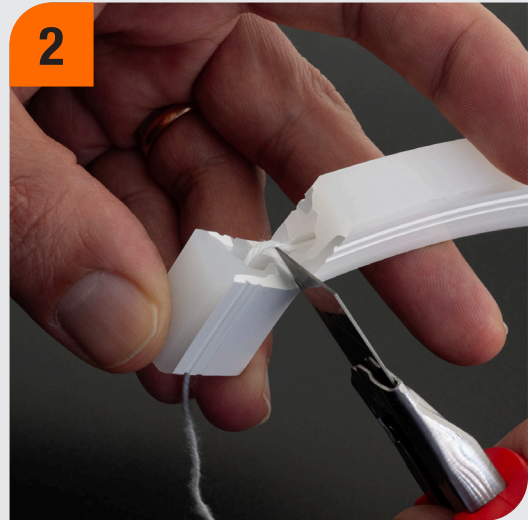


## Installation Instruction for LED Neon Channels

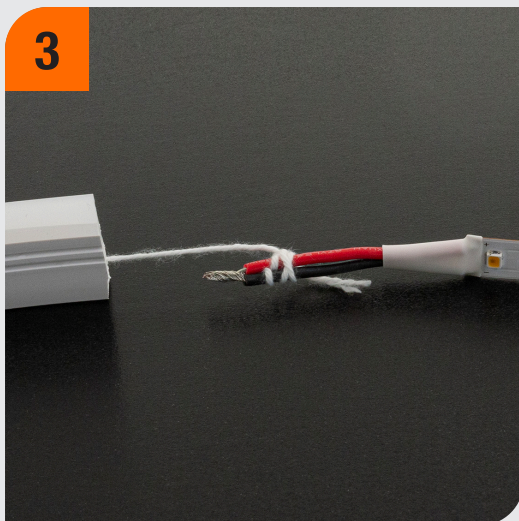
- Ensure proper surface cleaning before installation, as the neon channel's silicon material is susceptible to accumulating dust.



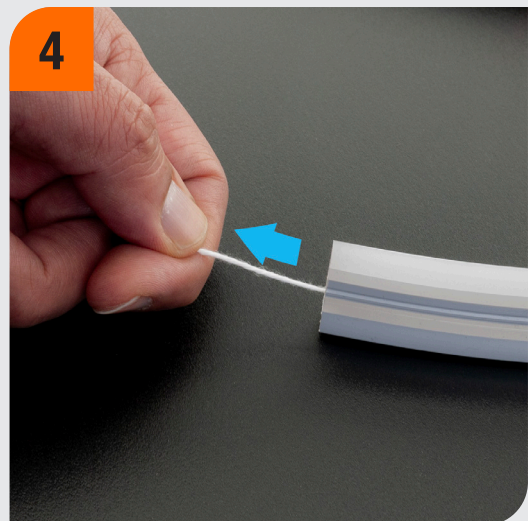
- 1**
- Use a sharp knife to cut the neon channel to the desired size. Before cutting, securely hold the string, then proceed to cut the channel slowly.



- 2**
- After cutting around half of the channel, check the string inside to ensure you do not cut the string.



- 3**
- Tighten the string by either securing it with the power feed or taping it at the back of the LED strip.



- 4**
- Pull the string gently, and from the other end, ensure the LED strip is not getting stuck anywhere and is moving into the channel smoothly.