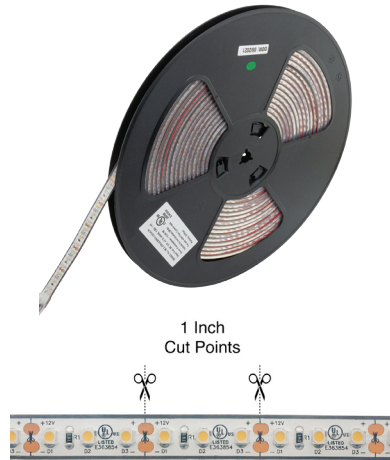




LED TYPE: FS-3528-6000-120-12-WP COLOR: 6000K

Specifications

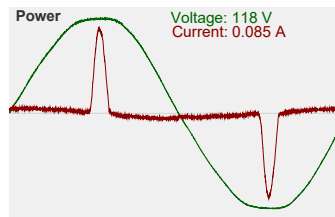
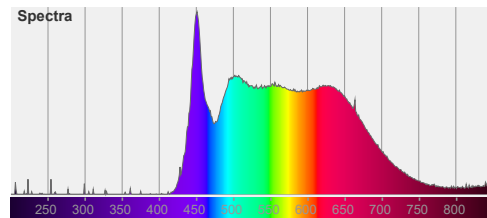
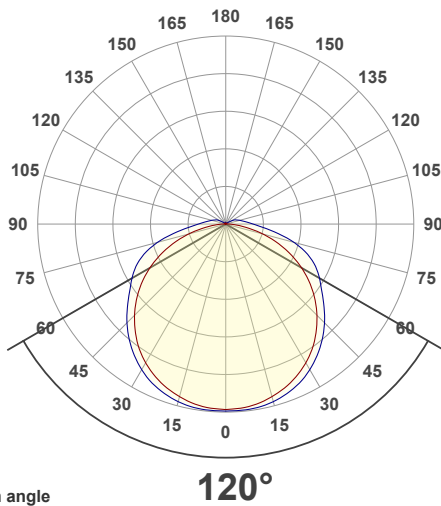
Model No.:	FS-3528-6000-120-12-WP
Input Voltage:	12V DC
Wattage:	9.6W per meter (3W/ft)
LED Qty:	120 LEDs per meter
Brightness:	827Lm/m (252Lm/ft)
Color Temperature:	6000K (Cool White)
Rendering Index:	CRI>95
IP Rating:	IP68 [Weatherproof]
Dimmable:	Yes
Dimensions:	10,000mm x 10mm (393.6in x 0.39in)
Certification:	UL / RoHS



SKU: 666561406264

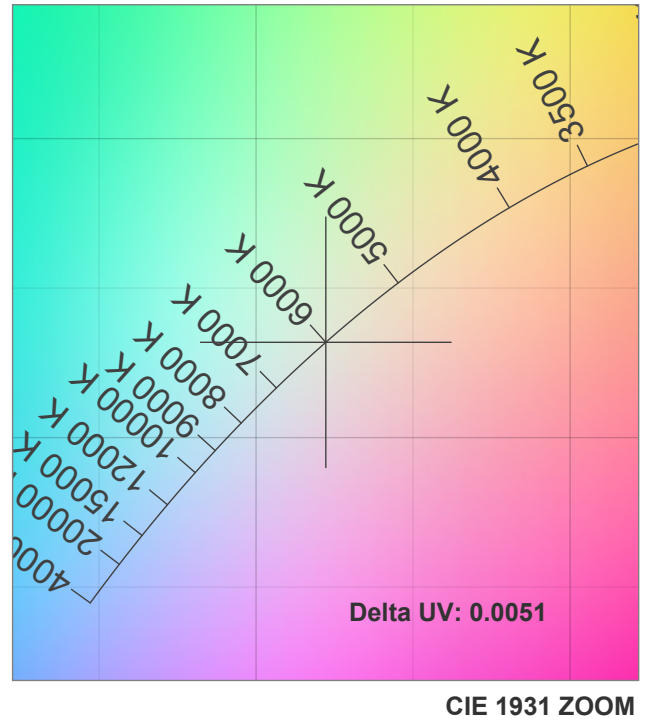
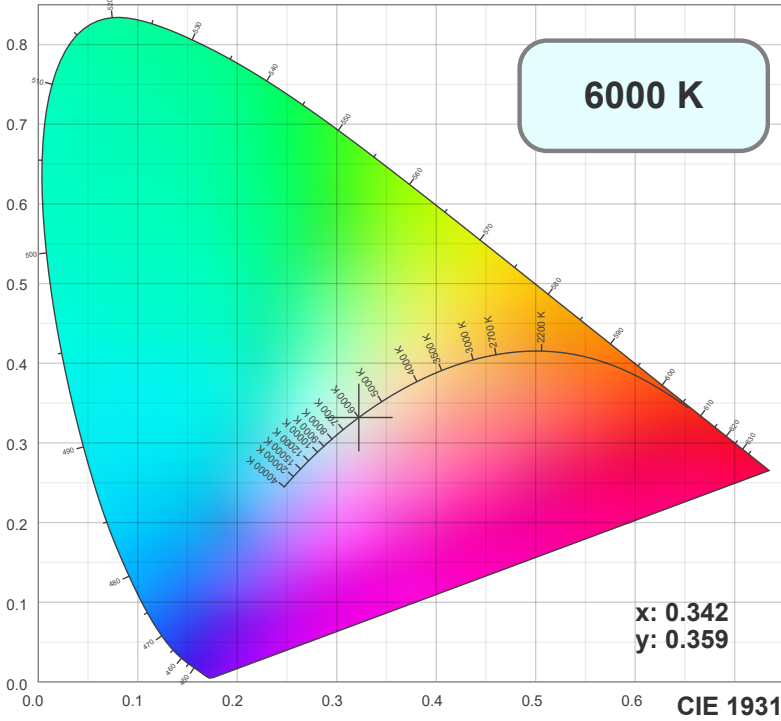
Features

- Ideal strip light applications include signage, interior, and exterior lighting, backlighting, accent lighting, under cabinet.
- over the cabinet, landscape, bar, club, architecture, entertainment, and any other areas where long-lasting, eco-friendly illumination is needed.
- We stock a variety of single colors, and multi-color strips like RGB, and RGBW.
- The Color Changing LED Strips can produce over 16 million color hues.
- Rated for 50,000 lifetime hours.
- The white color for the RGB LED strip light is a mixture of red, green, and blue, so the white is not pure.
- Each strip light roll is hand-tested for quality assurance, UL Listed for Class 2 low voltage luminaires and fixtures, RoHS and CE approved.
- Our SMD LED uses a copper base and gold wire which provides good heat dispersion, a long lifespan, and low luminous decay.
- All our LEDs can meet the LM80 test standard.
- Our flexible PCBs are all high-quality double layers PCB, at least 2 ounces, or 3 ounces in particular models. So there is a low voltage drop and good heat dispersion too.

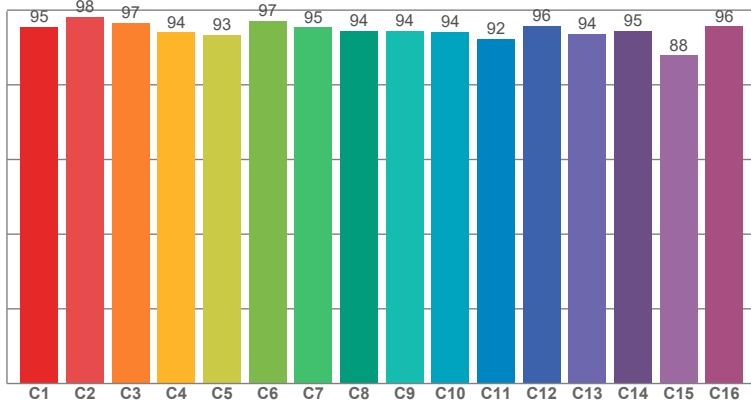


Disclaimer

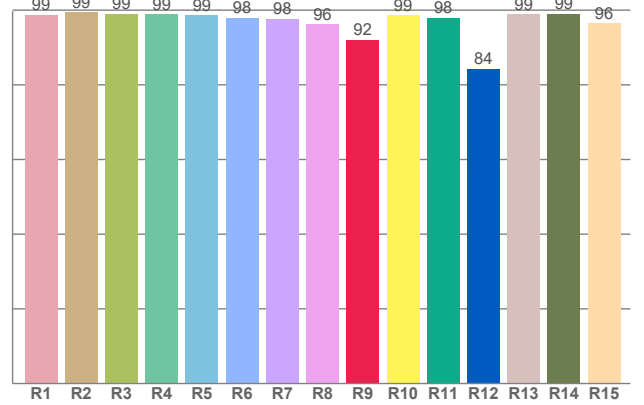
The data and information contained in this specification sheet are subject to change without notice; the ratings supplied are provided based on the product manufacturer. The information contained in this specification sheet should not be considered a warranty, expressed or implied, including, but not limited to, a warranty of merchantability or fitness for a particular purpose. In no event shall LED Lights and Parts be liable for any incidental or consequential damages resulting from the use, misuse, or inability to use the product. This exclusion applies regardless of whether such damages are sought based on breach of warranty, breach of contract, negligence, strict liability in tort, or any other legal theory.



TM30: 94.6



CRI: 98.3 (R1-R8)



CRI R values, only R1-R8 are used to calculate final CRI value

R1	R2	R3	R4	R5	R6	R7	R8	R9	R10	R11	R12	R13	R14	R15
98.67	99.41	98.93	98.83	98.59	97.98	97.70	96.22	92.06	98.56	98.01	84.22	98.88	99.02	96.47

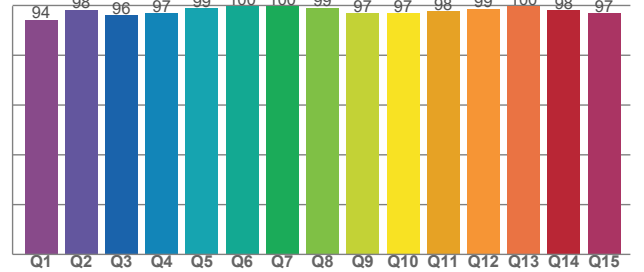
TM30 C values, 16 binned values out of total of 99 C values

C1	C2	C3	C4	C5	C6	C7	C8	C9	C10	C11	C12	C13	C14	C15	C16
95.43	98.12	96.63	94.08	93.40	97.15	95.39	94.49	94.39	94.27	92.35	95.83	93.70	94.51	87.86	95.69

CQS Q values

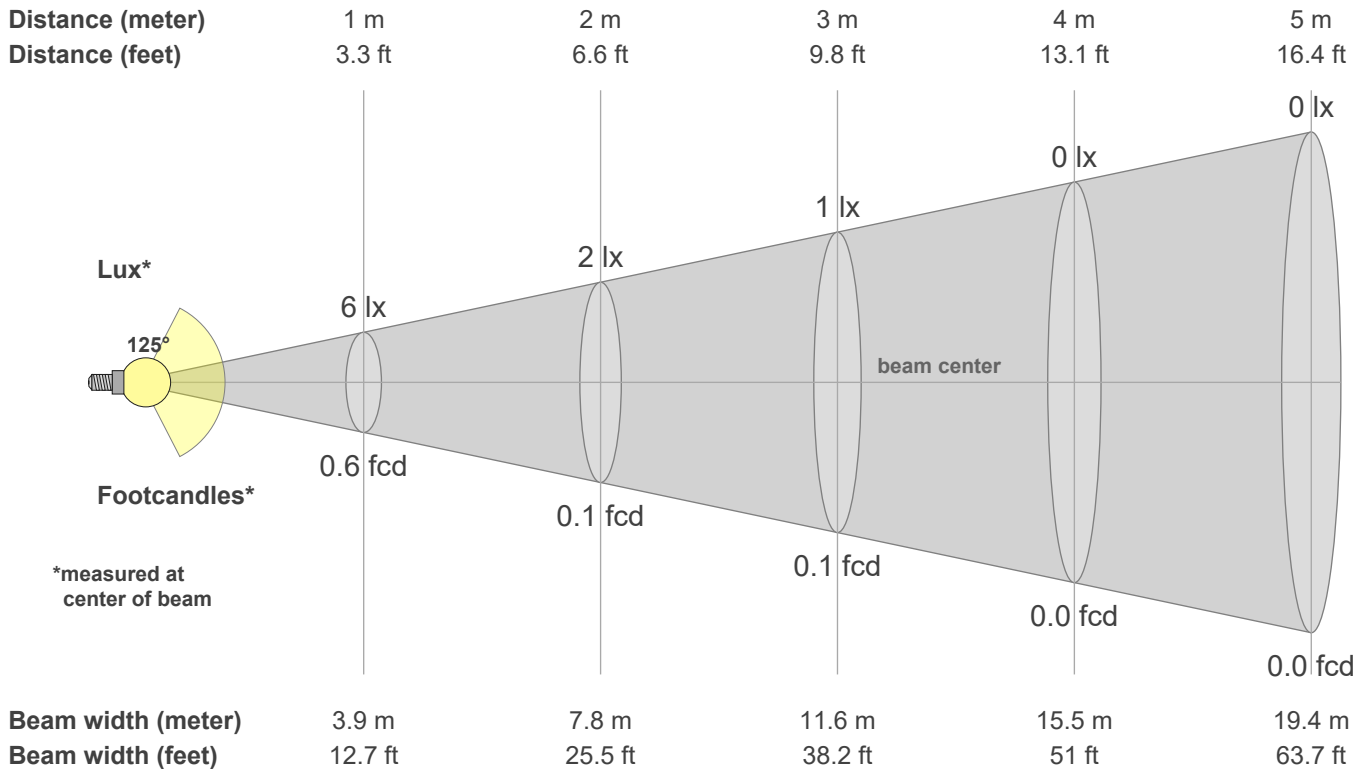
Q1	Q2	Q3	Q4	Q5	Q6	Q7	Q8	Q9	Q10	Q11	Q12	Q13	Q14	Q15
94.32	98.31	96.18	96.81	98.78	99.60	99.71	99.14	96.83	96.75	97.80	98.70	99.77	98.09	96.79

CQS: 97.4



Color parameters

CCT	CRI	CRI R9	TM30 Rf	TM30 Rg	CQS	x	y	u	v	Duv
6000 K	98.3	92.1	94.6	99.4	97.4	0.3	0.3	0.2	0.3	0.0018



Intensities in 0° c-plane

0°	9°	18°	27°	36°	45°	54°	63°	72°	81°	90°	99°	108°	117°	126°	135°	144°	153°	162°	171°
6.04	5.93	5.70	5.34	4.84	4.18	3.41	2.53	1.57	0.64	0.12	0.02	0.02	0.03	0.03	0.02	0.02	0.02	0.02	0.02
100%	98%	94%	89%	80%	69%	57%	42%	26%	11%	2%	0%	0%	0%	1%	0%	0%	0%	0%	0%

Intensities in 90° c-plane

0°	9°	18°	27°	36°	45°	54°	63°	72°	81°	90°	99°	108°	117°	126°	135°	144°	153°	162°	171°
6.04	6.04	5.89	5.59	5.12	4.53	3.88	3.32	2.60	1.59	0.90	0.59	0.42	0.28	0.09	0.02	0.02	0.02	0.02	0.03
100%	100%	98%	93%	85%	75%	64%	55%	43%	26%	15%	10%	7%	5%	1%	0%	0%	0%	0%	0%

Intensities in 180° c-plane

0°	9°	18°	27°	36°	45°	54°	63°	72°	81°	90°	99°	108°	117°	126°	135°	144°	153°	162°	171°
6.04	5.93	5.70	5.34	4.84	4.18	3.41	2.53	1.57	0.64	0.12	0.02	0.02	0.03	0.03	0.02	0.02	0.02	0.02	0.02
100%	98%	94%	89%	80%	69%	57%	42%	26%	11%	2%	0%	0%	0%	1%	0%	0%	0%	0%	0%

Intensities in 270° c-plane

0°	9°	18°	27°	36°	45°	54°	63°	72°	81°	90°	99°	108°	117°	126°	135°	144°	153°	162°	171°
6.04	6.04	5.89	5.59	5.12	4.53	3.88	3.32	2.60	1.59	0.90	0.59	0.42	0.28	0.09	0.02	0.02	0.02	0.02	0.03
100%	100%	98%	93%	85%	75%	64%	55%	43%	26%	15%	10%	7%	5%	1%	0%	0%	0%	0%	0%

Beam angle 50%	Field angle 10%	Cutoff angle 2.5%	Intensity ratio in 120° cone	Intensity ratio in 90° cone
125.5°	180.0°	211.3°	69.3%	46.0%