



LED TYPE: FS-2835-XXXX-120-24-NS

COLOR: 2400K • 5000K

Specifications

Model No.:	FS-2835-xxxx-120-24-NS
Input Voltage:	24V DC
Wattage:	14.4W per meter (4.5W/ft)
LED Qty:	120 LEDs per meter
Brightness:	1312-1377Lm/m (400-420Lm/ft)
Available Color	2400K (Sunset White)
Temperatures:	5000K (Daylight)
IP Rating:	IP20 (Indoor use only)
Rendering Index:	CRI>98
Dimmable:	Yes
Dimensions:	5,000mm x 12mm (196.8in x 0.47in)
Certification:	UL / RoHS



2400K (Sunset White)

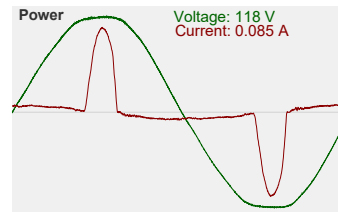
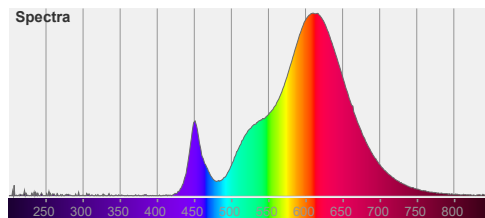
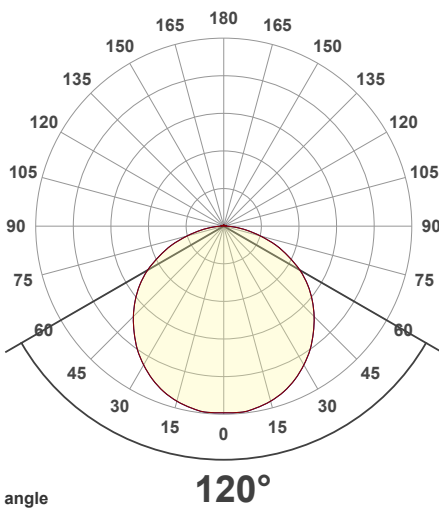
SKU: 666561409876

5000K (Daylight)

SKU: 666561409951

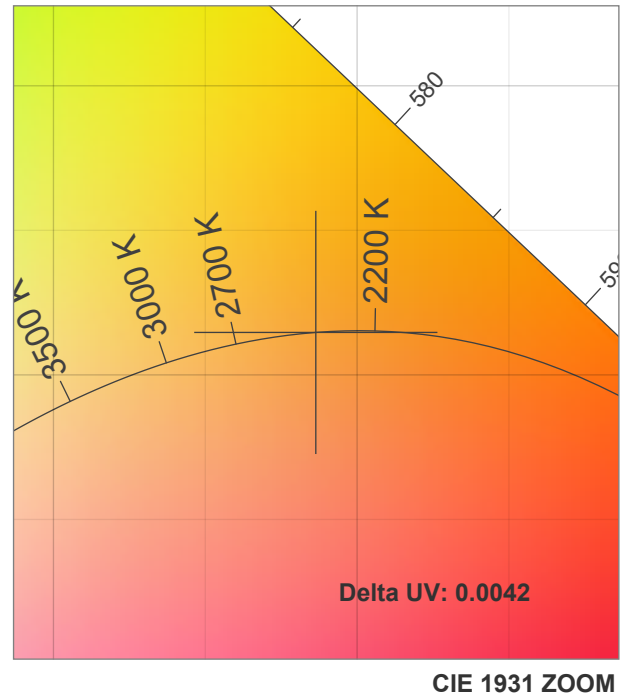
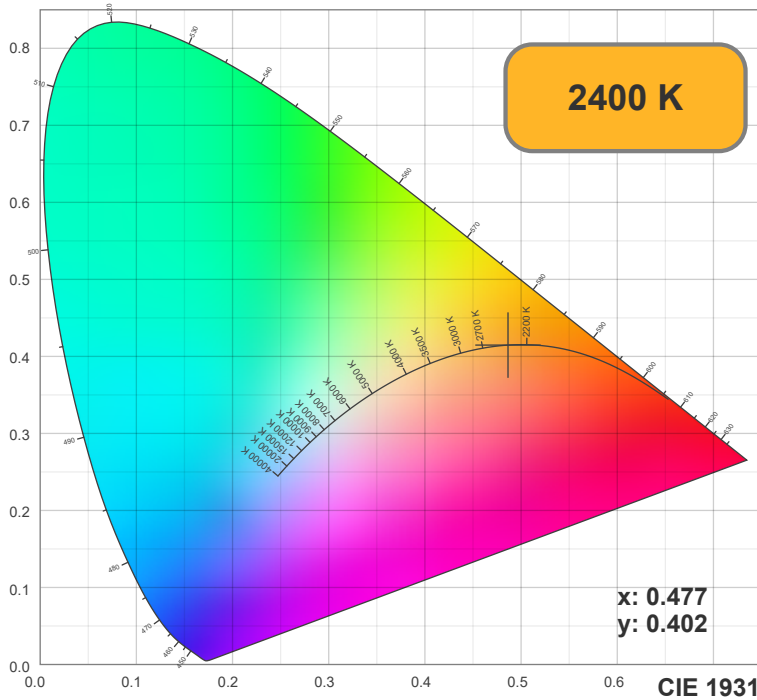
Features

- Ideal strip light applications include, signage, interior, and exterior lighting, backlighting, accent lighting, under cabinet, over the cabinet, landscape, bar, club, architectural, entertainment, and any other areas where long-lasting, eco-friendly illumination is needed.
- We stock a variety of single color, RGB and RGBW color changing LED Strips which can produce over 16 million color hues.
- Rated for 50,000 lifetime hours and have a 2-year warranty.
- Each strip light roll is hand-tested for quality assurance, UL Listed for Class 2 low voltage luminaries and fixtures, RoHS and CE approved.
- Our SMD LED uses a copper base and gold wire which provides good heat dispersion, long lifespan, and low luminous decay. All our LEDs can meet the LM80 test standard.
- Our flexible PCB are all high-quality double layers PCB, at least 2 ounces, or 3 ounces in particular models. So there is a low voltage drop and good heat dispersion too.



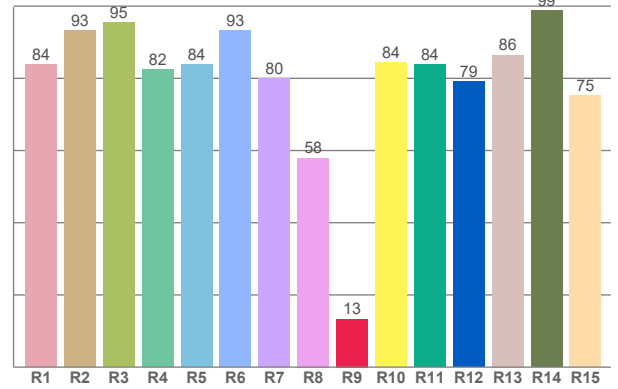
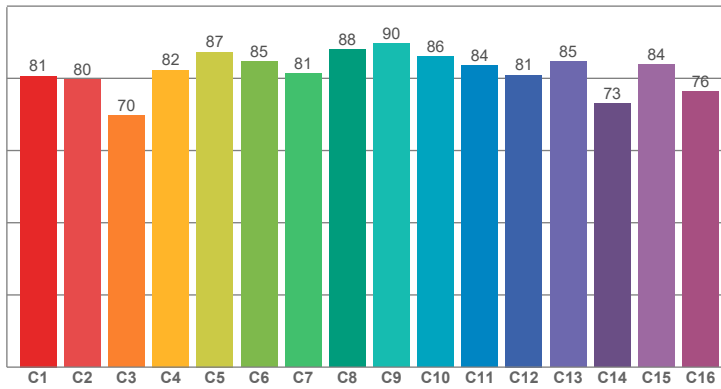
Disclaimer

The data and information contained in this specification sheet are subject to change without notice; the ratings supplied are provided based on the product manufacturer. The information contained in this specification sheet should not be considered a warranty, expressed or implied, including, but not limited to, a warranty of merchantability or fitness for a particular purpose. In no event shall LED Lights and Parts be liable for any incidental or consequential damages resulting from the use, misuse, or inability to use the product. This exclusion applies regardless of whether such damages are sought based on breach of warranty, breach of contract, negligence, strict liability in tort, or any other legal theory.



TM30: 82.2

CRI: 83.7 (R1-R8)



CRI R values, only R1-R8 are used to calculate final CRI value

R1	R2	R3	R4	R5	R6	R7	R8	R9	R10	R11	R12	R13	R14	R15
83.80	93.20	95.44	82.38	83.74	93.25	79.96	57.93	13.34	84.32	83.92	79.18	86.49	98.70	75.17

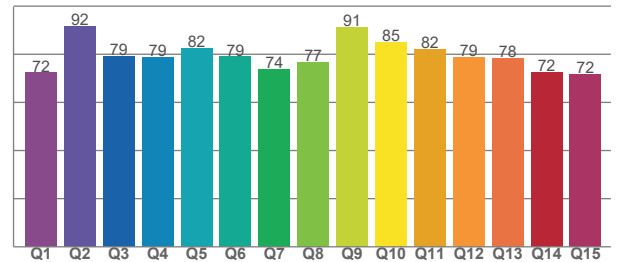
TM30 C values, 16 binned values out of total of 99 C values

C1	C2	C3	C4	C5	C6	C7	C8	C9	C10	C11	C12	C13	C14	C15	C16
80.68	79.69	69.68	82.30	87.30	84.57	81.28	88.00	89.72	86.08	83.53	80.93	84.65	73.03	83.86	76.37

CQS Q values

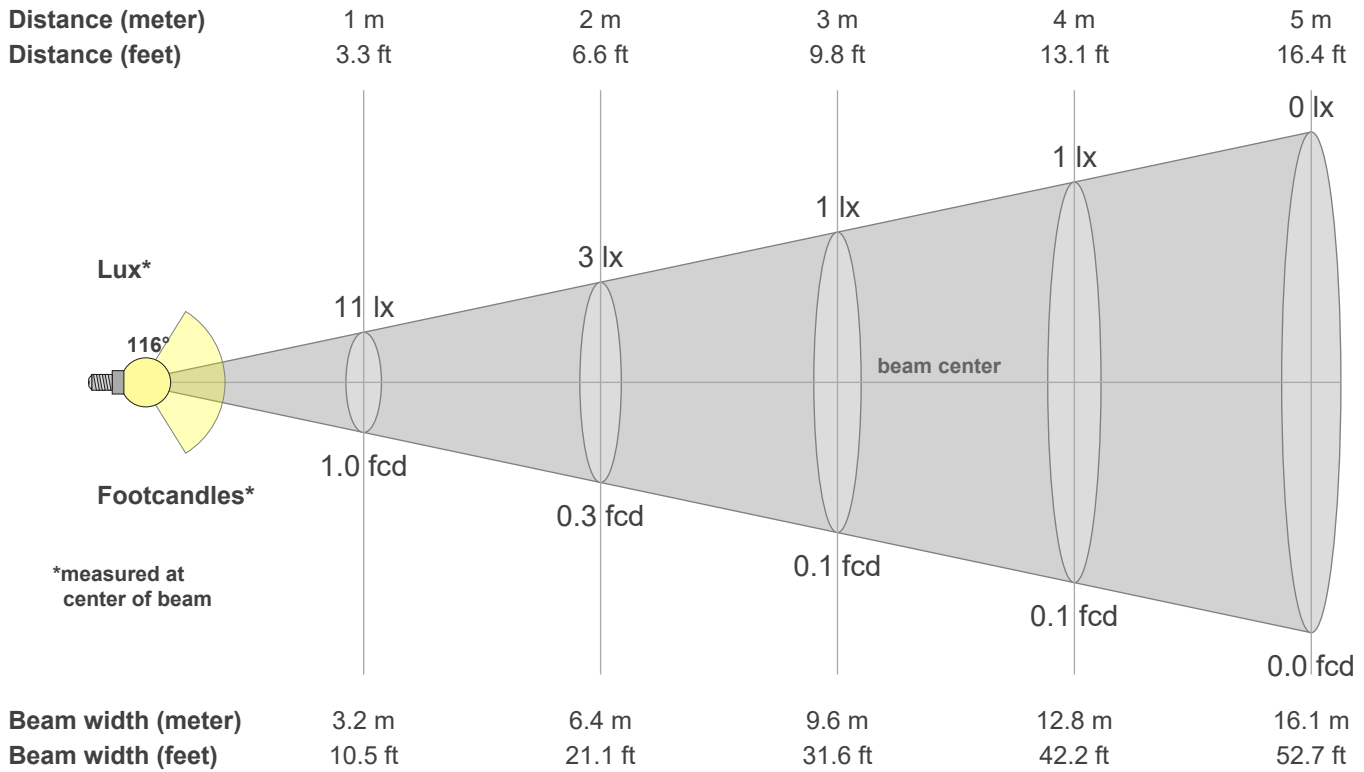
Q1	Q2	Q3	Q4	Q5	Q6	Q7	Q8	Q9	Q10	Q11	Q12	Q13	Q14	Q15
72.32	91.58	79.34	78.93	82.36	78.97	73.62	76.73	91.08	85.10	82.02	78.62	78.19	72.36	71.62

CQS: 78.4



Color parameters

CCT	CRI	CRI R9	TM30 Rf	TM30 Rg	CQS	x	y	u	v	Duv
2400 K	83.7	13.3	82.2	101.8	78.4	0.5	0.4	0.3	0.4	-0.0042



Intensities in 0° c-plane

0°	5°	10°	15°	20°	25°	30°	35°	40°	45°	50°	55°	60°	65°	70°	75°	80°	85°	90°	95°
11.1	11.1	11.0	10.8	10.5	10.1	9.6	9.0	8.3	7.6	6.9	6.1	5.2	4.2	3.3	2.3	1.4	0.7	0.2	0.1
100%	100%	99%	97%	94%	90%	86%	81%	75%	68%	62%	55%	47%	38%	30%	20%	12%	6%	2%	1%

Intensities in 90° c-plane

0°	5°	10°	15°	20°	25°	30°	35°	40°	45°	50°	55°	60°	65°	70°	75°	80°	85°	90°	95°
11.1	11.1	11.0	10.8	10.5	10.1	9.6	9.0	8.3	7.6	6.9	6.1	5.2	4.2	3.3	2.3	1.4	0.7	0.2	0.1
100%	100%	99%	97%	94%	90%	86%	81%	75%	68%	62%	55%	47%	38%	30%	20%	12%	6%	2%	1%

Intensities in 180° c-plane

0°	5°	10°	15°	20°	25°	30°	35°	40°	45°	50°	55°	60°	65°	70°	75°	80°	85°	90°	95°
11.1	11.1	11.0	10.8	10.5	10.1	9.6	9.0	8.3	7.6	6.9	6.1	5.2	4.2	3.3	2.3	1.4	0.7	0.2	0.1
100%	100%	99%	97%	94%	90%	86%	81%	75%	68%	62%	55%	47%	38%	30%	20%	12%	6%	2%	1%

Intensities in 270° c-plane

0°	5°	10°	15°	20°	25°	30°	35°	40°	45°	50°	55°	60°	65°	70°	75°	80°	85°	90°	95°
11.1	11.1	11.0	10.8	10.5	10.1	9.6	9.0	8.3	7.6	6.9	6.1	5.2	4.2	3.3	2.3	1.4	0.7	0.2	0.1
100%	100%	99%	97%	94%	90%	86%	81%	75%	68%	62%	55%	47%	38%	30%	20%	12%	6%	2%	1%

Beam angle 50%	Field angle 10%	Cutoff angle 2.5%	Intensity ratio in 120° cone	Intensity ratio in 90° cone
116.2°	163.7°	178.0°	76.3%	51.4%