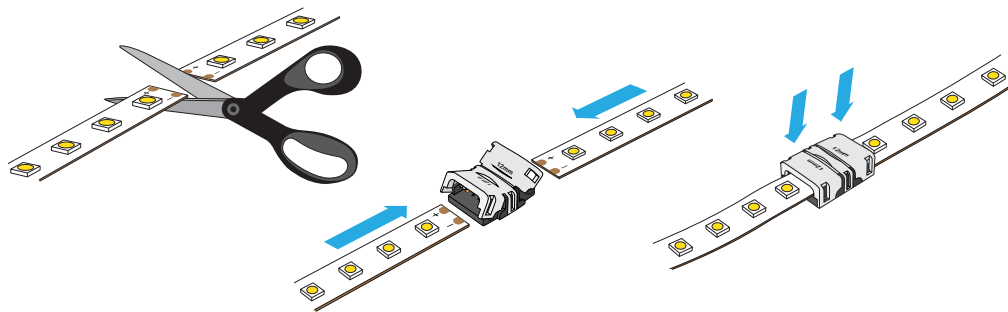


Max. Amp

12V - 5A / 24V - 4A

Wire Gauge

22 AWG



1 CUT STRIP LIGHT
AT CUTTING POINT

2 INSERT STRIP LIGHTS INTO
THE CONNECTOR AT THE
SAME TIME

3 PUSH BOTH CAPS TO
CLOSE THE CONNECTOR