

13" Retaining Wall/Step Light 12V AC/DC 3W (3000K)



SPECIFICATIONS

Model No:	HSC-3W-13-3K
Voltage:	12V AC/DC
Wattage:	3W
Brightness:	3000K (Warm White)
Light Source:	6 SMD
Beam Angle:	45°
Wire Gauge:	5ft of AWG22
Dimmable:	No
Dimensions:	303mm x 75mm x 17mm (13" x 2.95" x 0.67")
IP Rating:	IP67 (Outdoor rated)
Certificate:	ETL

FEATURES:

- 13-inch Hardscape Retaining Wall Light for outdoor lighting.
- Operates on 12V AC/DC and consumes only 3 watts of power.
- 6 SMD LEDs emit warm white light at 3000K (Warm White).
- Rust-free and has an IP67 rating, making it durable and able to withstand outdoor conditions. Provides a focused beam of light with a beam angle of 45° and a brightness of 180 lumens.
- Not dimmable.
- Comes with 5 feet of AWG 22 wire gauge and includes a selected front cover with mounting screws, a colored film/diffuser, and a wall light.
- ETL certified for safety.
- Perfect lighting solution for any hardscape lighting project and can seamlessly integrate into a wide variety of outdoor applications such as barbecue fire pits, landscape steps, retaining walls, benches, decks, flowerbeds, masonry walls, gazebos, patios, and other outdoor living spaces.



WARM WHITE
3000K



SKU: 666561430924

Extension Cables (Sold Separately)

Model: ALED-0-TC3
SKU: 666561430955

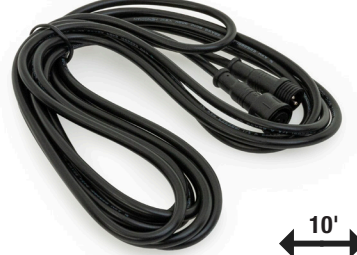


Model: ALED-0-E1
SKU: 666561430979



3'

Model: ALED-0-E3
SKU: 666561430986



10'

Model: ALED-0-E5
SKU: 666561430993



15'

Model: ALED-0-H5S (6 output extension)
SKU: 666561430962



16'

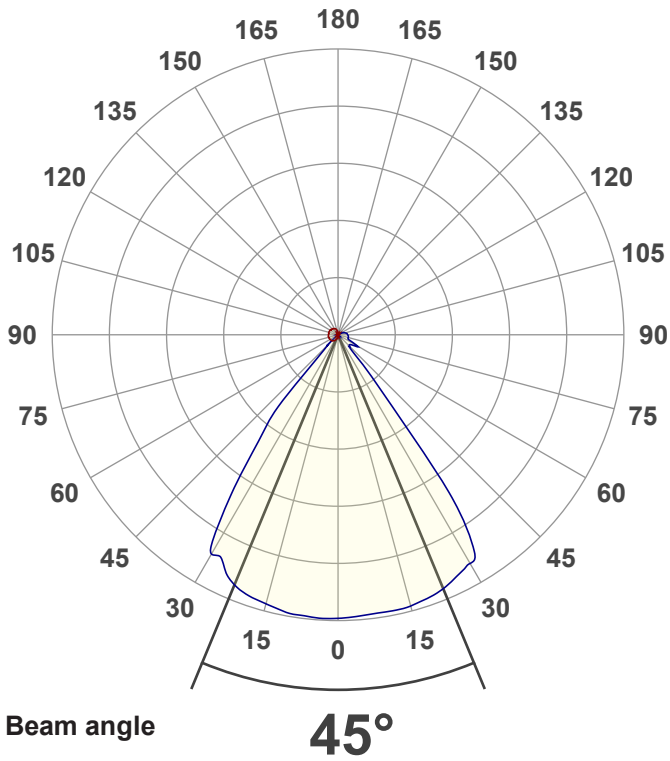
Model: ALED-0-E10
SKU: 666561431006



30'

Disclaimer:

The data and information contained in this specification sheet are subject to change without notice; the ratings supplied are provided based on the product manufacturer. The information contained in this specification sheet should not be considered a warranty, expressed or implied, including, but not limited to, a warranty of merchantability or fitness for a particular purpose. In no event shall Veroboard be liable for any incidental or consequential damages resulting from the use, misuse, or inability to use the product. This exclusion applies regardless of whether such damages are sought based on breach of warranty, breach of contract, negligence, strict liability in tort, or any other legal theory.

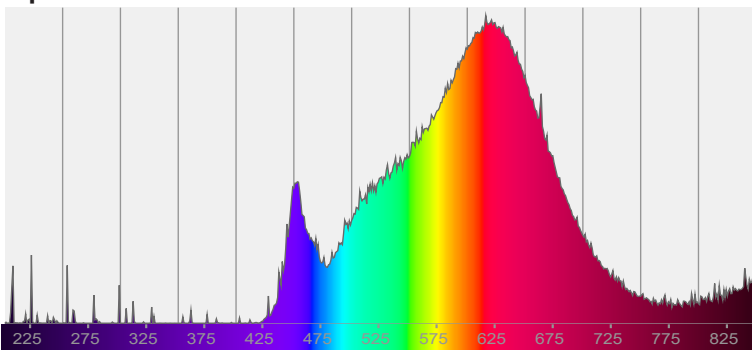


WARM WHITE
3000K

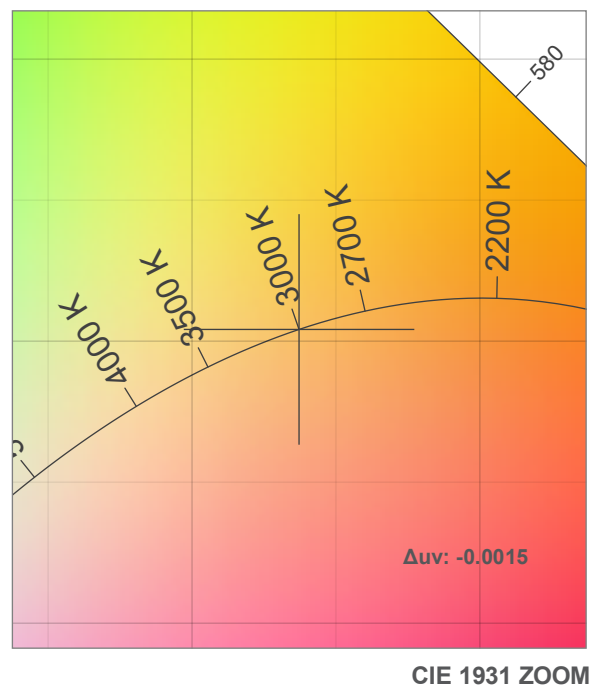
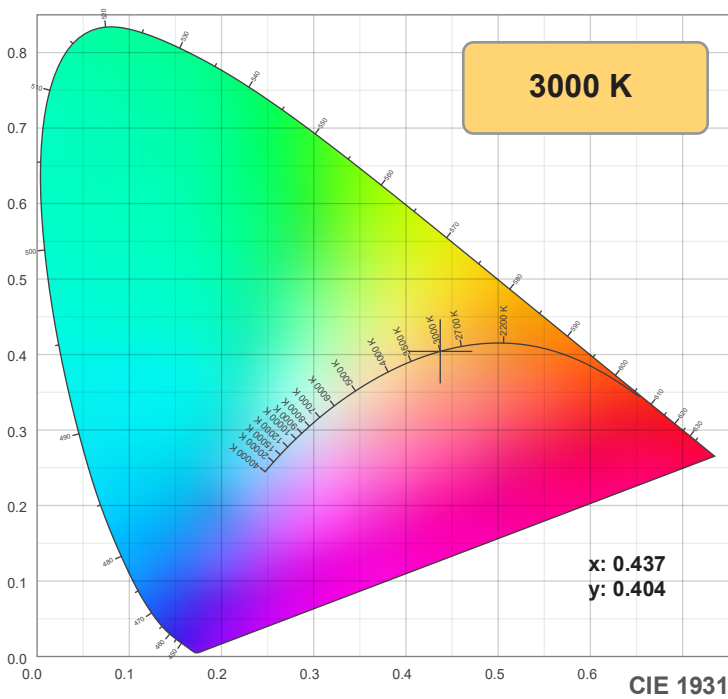
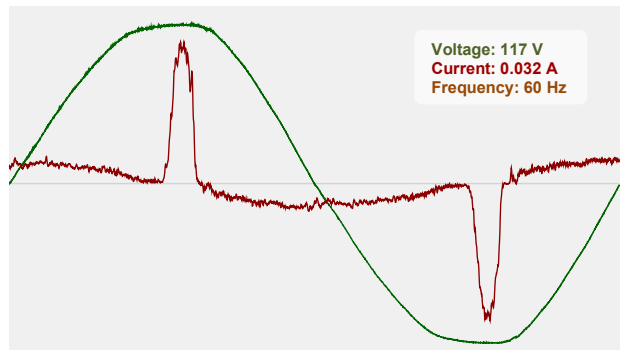


CIE 1931
x: 0.437
y: 0.404

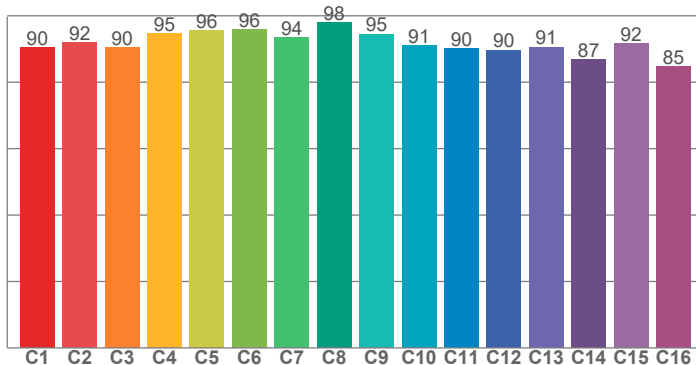
Spectra



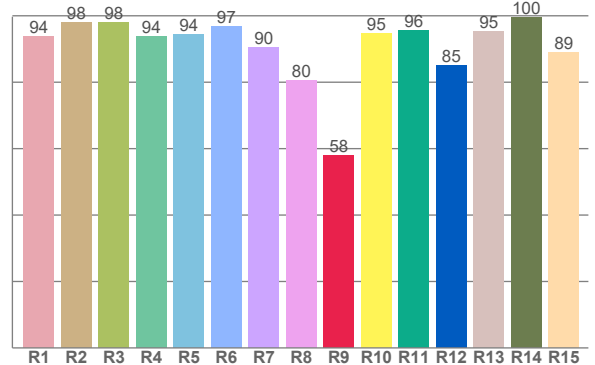
Power



TM-30: 91.9



CRI: 93.2 (R1-R8)



CRI R values, only R1-R8 are used to calculate final CRI value

R1	R2	R3	R4	R5	R6	R7	R8	R9	R10	R11	R12	R13	R14	R15
93.9	97.9	98.1	93.7	94.2	96.7	90.4	80.4	58.1	94.7	95.6	85.2	95.3	99.6	89.1

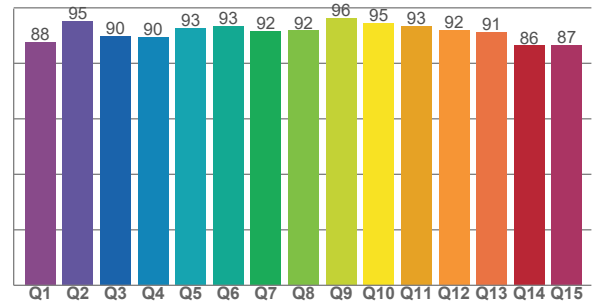
TM30 C values, 16 binned values out of total of 99 C values

C1	C2	C3	C4	C5	C6	C7	C8	C9	C10	C11	C12	C13	C14	C15	C16
90.5	92.0	90.5	94.6	95.5	95.9	93.5	98.0	94.5	91.1	90.1	89.7	90.6	86.8	91.7	84.8

CQS Q values

Q1	Q2	Q3	Q4	Q5	Q6	Q7	Q8	Q9	Q10	Q11	Q12	Q13	Q14	Q15
87.7	95.2	89.9	89.6	92.7	93.5	91.7	91.9	96.3	94.6	93.4	91.9	91.3	86.4	86.7

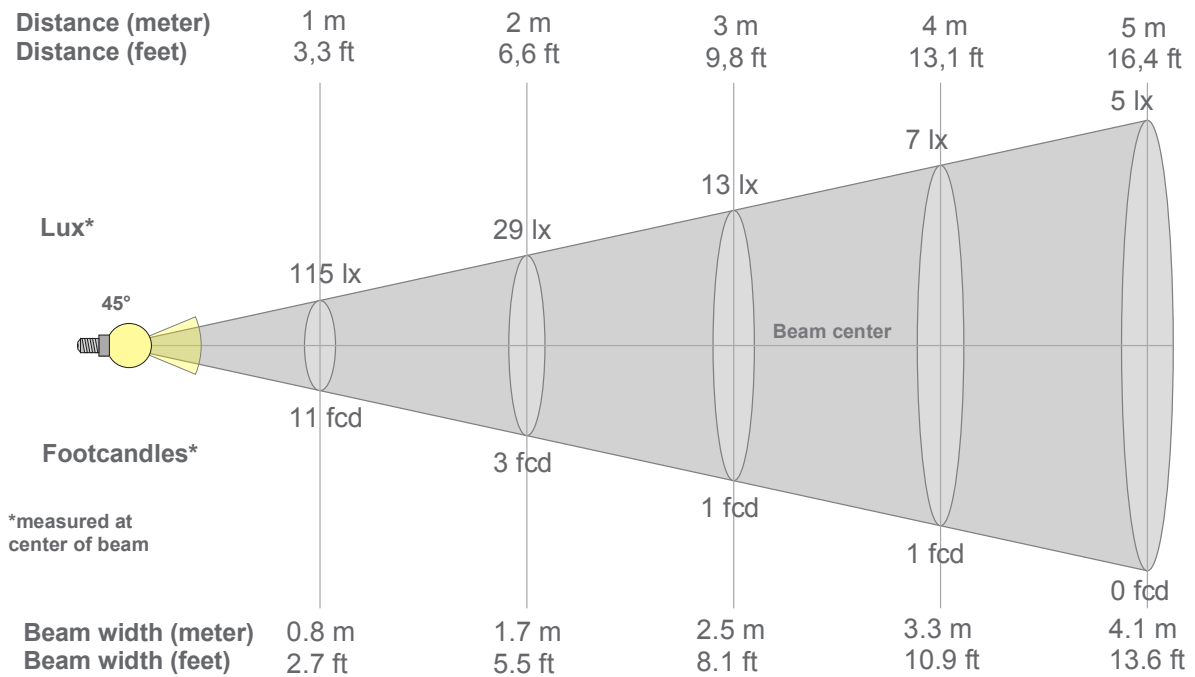
CQS: 90.9



Color parameters

Color temperature	Color rendering index	Red component	Color fidelity	Color gamut	Color quality scale	Color coordinate cie 1931	Color coordinate cie 1931	Color coordinate	Color coordinate	Color deviation from black body
CCT	CRI	CRI R9	TM30 Rf	TM30 Rg	CQS	x	y	u	v	Δuv
3000 K	93.2	58.1	91.9	99.4	90.9	0.437	0.404	0.251	0.348	-0.0015

Beam details



Beam intensities from 1-20m

1m	2m	3m	4m	5m	6m	7m	8m	9m	10m	11m	12m	13m	14m	15m	16m	17m	18m	19m	20m
3.3ft	6.6ft	9.8ft	13.1ft	16.4ft	19.7ft	23ft	26.2ft	29.5ft	32.8ft	36.1ft	39.4ft	42.7ft	45.9ft	49.2ft	52.5ft	55.8ft	59.1ft	62.3ft	65.6ft
115lx	29lx	13lx	7lx	5lx	3lx	2lx	2lx	1lx	1lx	1lx	1lx	1lx	1lx	1lx	0lx	0lx	0lx	0lx	0lx
10.7fcd	2.7fcd	1.2fcd	0.7fcd	0.4fcd	0.3fcd	0.2fcd	0.2fcd	0.1fcd	0.1fcd	0.1fcd	0.1fcd	0.1fcd	0.1fcd	0fcd	0fcd	0fcd	0fcd	0fcd	0fcd

Intensities in 0° c-plane

0°	9°	18°	27°	36°	45°	54°	63°	72°	81°	90°	99°	108°	117°	126°	135°	144°	153°	162°	171°	
115	0	0	0	0	0	0	0	0	0	0	0	0	0	0	0	0	0	0	1	1
100%	0%	0%	0%	0%	0%	0%	0%	0%	0%	0%	0%	0%	0%	0%	0%	0%	0%	0%	0%	1%

Intensities in 90° c-plane

0°	9°	18°	27°	36°	45°	54°	63°	72°	81°	90°	99°	108°	117°	126°	135°	144°	153°	162°	171°	
115	228	226	217	126	13	14	13	9	8	8	7	5	3	2	1	1	1	1	1	1
100%	198%	196%	189%	109%	12%	12%	11%	7%	7%	7%	6%	5%	3%	1%	1%	1%	1%	1%	1%	1%

Intensities in 180° c-plane

0°	9°	18°	27°	36°	45°	54°	63°	72°	81°	90°	99°	108°	117°	126°	135°	144°	153°	162°	171°	
115	2	3	5	6	7	7	8	8	8	8	7	8	7	7	7	6	5	4	3	3
100%	2%	3%	4%	5%	6%	6%	7%	7%	7%	7%	6%	7%	6%	6%	6%	5%	5%	4%	4%	2%

Intensities in 270° c-plane

0°	9°	18°	27°	36°	45°	54°	63°	72°	81°	90°	99°	108°	117°	126°	135°	144°	153°	162°	171°	
115	229	224	207	120	14	0	0	0	0	0	0	0	0	0	0	0	0	0	0	0
100%	199%	195%	180%	104%	12%	0%	0%	0%	0%	0%	0%	0%	0%	0%	0%	0%	0%	0%	0%	0%

Beam angle 50%	Field angle 10%	Cutoff angle 2,5%	Intensity ratio in 120° cone	Intensity ratio in 90° cone
45°	221.5°	257.1°	83.2%	78.8%