



2.5" SQUARE IN-GROUND LIGHT 24V 5W 48° REFLECTOR 3000K (WARM WHITE)

Specifications



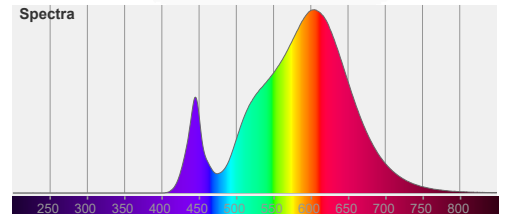
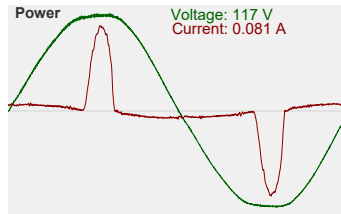
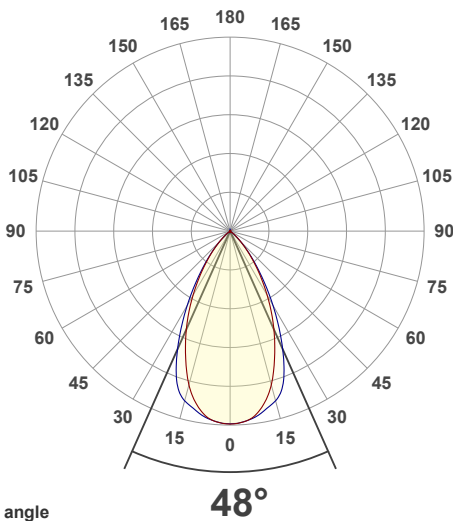
Model No.:	UL-1020-0500-A
Input Voltage:	24V DC
Wattage:	5W
Bulb Type:	Integrated LED
Color Temperature:	3000K (Warm White)
Housing Material:	Die-cast Aluminum body
Cap Material:	316 Stainless Steel
Beam Angle:	48° lens
Optics:	Primary optics (Fresnel Lens)
IP Rating:	IP67 (Outdoor rated)
Dimmable:	Yes
Cable Size:	Length: 100cm (39.3in) Diameter: 7.5mm (0.3in) 18AWG
Dimensions with housing:	Base Diameter: 61mm (2.4in) Side: 65mm (2.5in) Height: 100mm (3.95in)
Dimensions without housing:	Side: 65mm (2.5in) Height: 61mm (2.4in)
Certification:	CE



SKU#: 666561424183

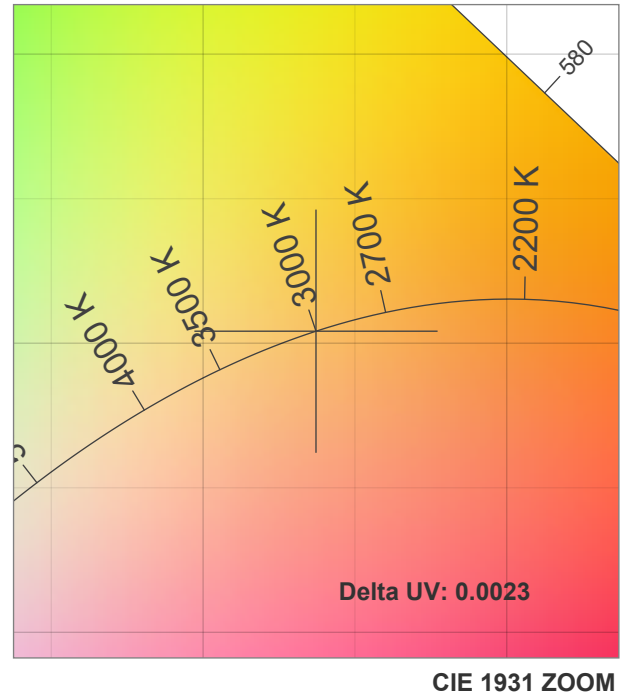
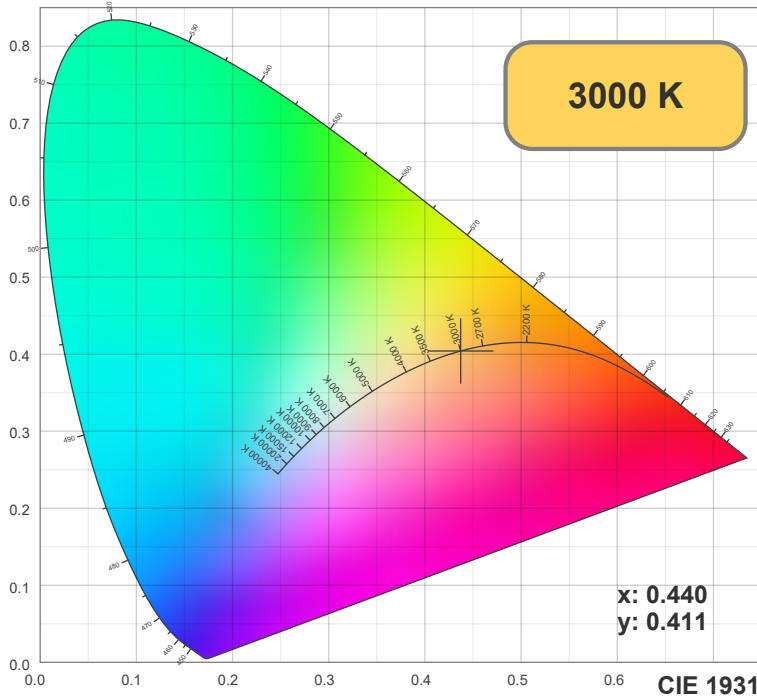
Features

- High-quality in-ground light designed for outdoor applications.
- 5W integrated COB LED bulb with warm white color temperature of 3000K.
- Made of durable die-cast aluminum body with 316 stainless steel cap color finish, resistant to weather and being stepped upon.
- Perfect for creating a unique ambiance or functional illumination for walk ways, garden lighting, and other outdoor applications.
- Powered by 24V DC operating voltage with total power consumption of 5W.
- Maximum flexibility in power options with single or multiple LED Light transformers in both dimmable or non-dimmable transformers.
- IP67 rating ensures it can withstand dust, rain, and other environmental factors.
- Dimmable to adjust brightness as per requirements.
- Comes with secondary optic (reflector) with a beam angle of 48° for spotlight applications.

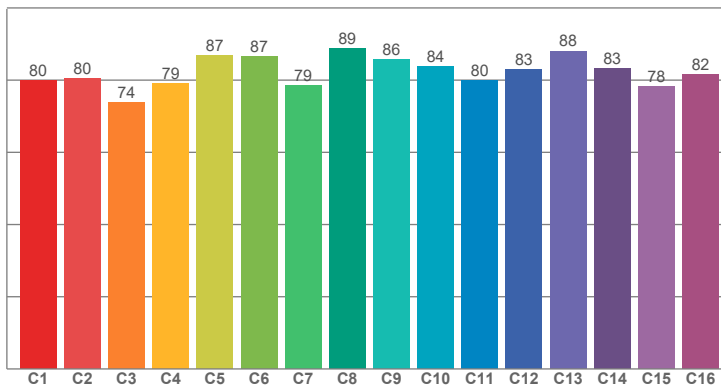


Disclaimer

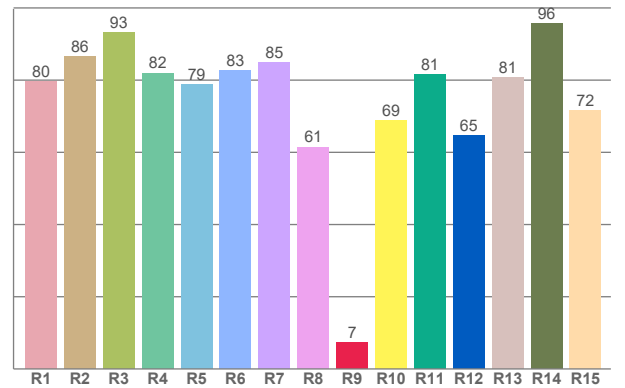
The data and information contained in this specification sheet are subject to change without notice; the ratings supplied are provided based on the product manufacturer. The information contained in this specification sheet should not be considered a warranty, expressed or implied, including, but not limited to, a warranty of merchantability or fitness for a particular purpose. In no event shall LED Lights and Parts be liable for any incidental or consequential damages resulting from the use, misuse, or inability to use the product. This exclusion applies regardless of whether such damages are sought based on breach of warranty, breach of contract, negligence, strict liability in tort, or any other legal theory.



TM30: 82.2



CRI: 81.2 (R1-R8)



CRI R values, only R1-R8 are used to calculate final CRI value

R1	R2	R3	R4	R5	R6	R7	R8	R9	R10	R11	R12	R13	R14	R15
79.55	86.45	93.26	81.97	78.82	82.73	84.97	61.49	7.42	68.85	81.45	64.77	80.63	95.75	71.58

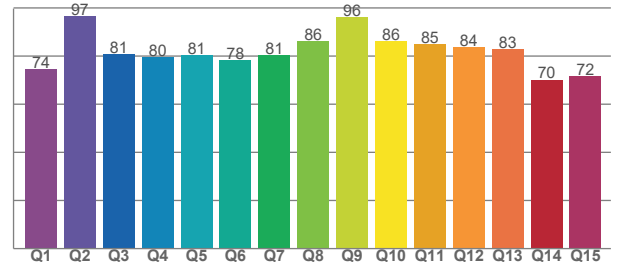
TM30 C values, 16 binned values out of total of 99 C values

C1	C2	C3	C4	C5	C6	C7	C8	C9	C10	C11	C12	C13	C14	C15	C16
79.88	80.41	73.88	79.10	86.71	86.65	78.60	88.84	85.67	83.66	79.80	82.89	88.06	83.28	78.32	81.62

CQS Q values

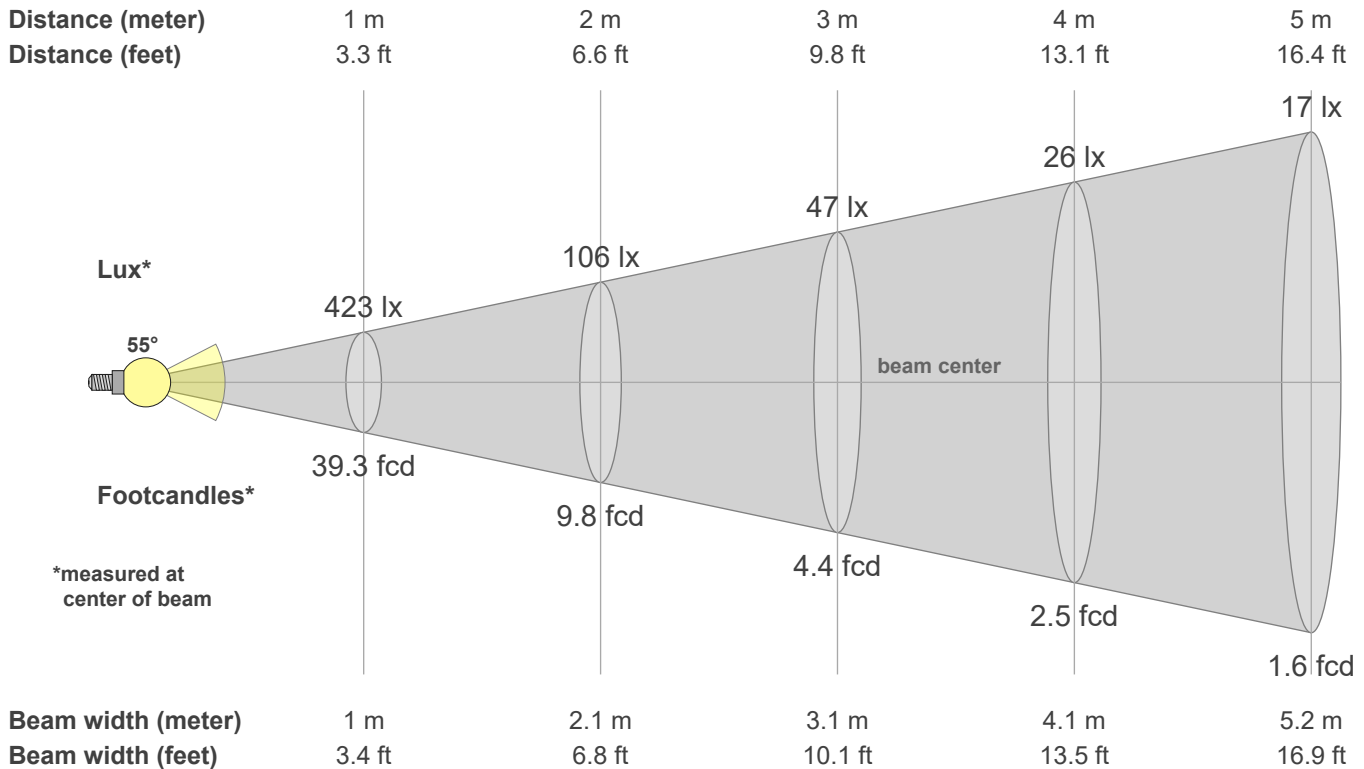
Q1	Q2	Q3	Q4	Q5	Q6	Q7	Q8	Q9	Q10	Q11	Q12	Q13	Q14	Q15
74.50	96.57	80.89	79.65	80.52	78.32	80.53	86.05	96.02	86.29	84.99	83.66	83.03	70.20	71.67

CQS: 80.7



Color parameters

CCT	CRI	CRI R9	TM30 Rf	TM30 Rg	CQS	x	y	u	v	Duv
3000 K	81.2	7.4	82.2	98.7	80.7	0.4	0.4	0.3	0.3	0.0023



Intensities in 0° c-plane

0°	2°	4°	6°	8°	10°	12°	14°	16°	18°	20°	22°	24°	26°	28°	30°	32°	34°	36°	38°
423	423	420	415	407	394	379	360	338	312	287	261	237	212	187	163	140	119	99	81
100%	100%	99%	98%	96%	93%	89%	85%	80%	74%	68%	62%	56%	50%	44%	39%	33%	28%	23%	19%

Intensities in 90° c-plane

0°	2°	4°	6°	8°	10°	12°	14°	16°	18°	20°	22°	24°	26°	28°	30°	32°	34°	36°	38°
423	423	420	416	411	405	397	390	381	366	344	316	284	251	219	188	159	132	108	87
100%	100%	99%	98%	97%	96%	94%	92%	90%	87%	81%	75%	67%	59%	52%	45%	38%	31%	25%	21%

Intensities in 180° c-plane

0°	2°	4°	6°	8°	10°	12°	14°	16°	18°	20°	22°	24°	26°	28°	30°	32°	34°	36°	38°
423	423	420	415	407	394	379	360	338	312	287	261	237	212	187	163	140	119	99	81
100%	100%	99%	98%	96%	93%	89%	85%	80%	74%	68%	62%	56%	50%	44%	39%	33%	28%	23%	19%

Intensities in 270° c-plane

0°	2°	4°	6°	8°	10°	12°	14°	16°	18°	20°	22°	24°	26°	28°	30°	32°	34°	36°	38°
423	423	420	416	411	405	397	390	381	366	344	316	284	251	219	188	159	132	108	87
100%	100%	99%	98%	97%	96%	94%	92%	90%	87%	81%	75%	67%	59%	52%	45%	38%	31%	25%	21%

Beam angle 50%	Field angle 10%	Cutoff angle 2.5%	Intensity ratio in 120° cone	Intensity ratio in 90° cone
54.5°	86.8°	100.5°	99.7%	96.5%