

LED 3" 4" 5"/6" RETROFIT TRIM INSTALLATION INSTRUCTIONS

SUITABLE FOR TYPE IC OR NON-IC LUMINAIRES. (UL and CUL required)

WARNING - RISK OF FIRE OR ELECTRIC SHOCK. INSTALLATION OF THIS RETROFIT ASSEMBLY REQUIRES A PERSON FAMILIAR WITH THE CONSTRUCTION AND OPERATION OF THE LUMINAIRE'S ELECTRICAL SYSTEM AND THE HAZARD INVOLVED. IF NOT QUALIFIED, DO NOT ATTEMPT INSTALLATION. CONTACT A QUALIFIED ELECTRICIAN.

WARNING - Risk of fire or electric shock. Install this kit only in the luminaires that have the construction features and dimensions shown in the photographs and/or drawings. Do not make or alter any open holes in an enclosure of wiring or electrical components during kit installation.

WARNING - To prevent wiring damage or abrasion, do not expose wiring to edges of sheet metal or other sharp objects.

CAUTION: SHOCK AND FIRE HAZARD, DO NOT USE WHEN ENCLOSURE IS BROKEN. RISK OF ELECTRIC SHOCK - USE IN DRY LOCATIONS ONLY.

WARNING - RISK OF FIRE OR ELECTRIC SHOCK. DO NOT ALTER, RELOCATE, OR REMOVE WIRING, LAMP HOLDERS, POWER SUPPLY, OR ANY OTHER ELECTRICAL COMPONENT. THE RETROFIT KIT IS ACCEPTED AS A COMPONENT OF A LUMINAIRE WHERE THE SUITABILITY OF THE COMBINATION SHALL BE DETERMINED BY CSA OR AUTHORITIES HAVING JURISDICTION.

RETROFIT TRIM COMPARTMENT DIMENSIONS

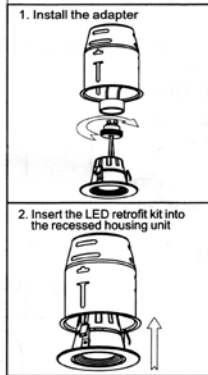
3" Housing : 3 (DIA)in x 4 (H)in

4" Housing : 4-5/8 (DIA)in x 5-11/16(H)in

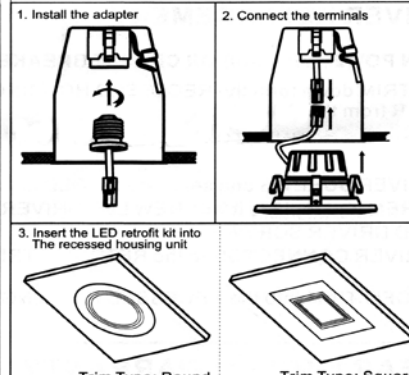
5" Housing : 5-1/2 (DIA)in x 7-1/4(H)in

6" Housing : 6-1/8 (DIA)in x 7-3/4(H)in

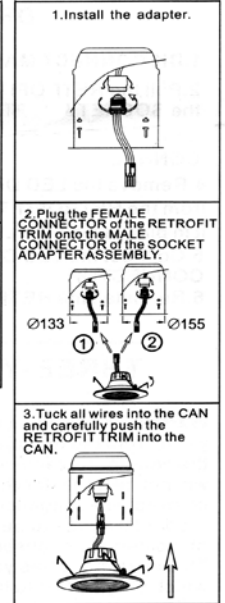
3" INSTALLATION INSTRUCTIONS



4" INSTALLATION INSTRUCTIONS



5"/6" INSTALLATION INSTRUCTIONS



ASSEMBLY AND INSTALLATION

INCANDESCENT HOUSING

1. Thread the SOCKET ADAPTER into the SOCKET.
2. Cover the trim with your favorite color.
3. Tuck all wires into the CAN and carefully push the RETROFIT TRIM into the CAN.

DIMMING

Although this product is compatible with most common residential type dimmers, dimming performance depends on dimmer, dimmer setting (for dimmers with brightness range adjustments), wiring method, and the number of LED modules. For best results, set dimmer position at maximum before adjusting to a lower light level.

Recommended Dimmers (minimum load for four LED modules maybe required for optimal dimming performance): Lutron SCL-153P, SCL-153PH, LGCL-153P, LGCL-153PLH, DVCL-153PR and TGCL-153PH.

When there is a mismatch between the dimmer and the LED, which makes the LED stroboscopic, then slide the adjustment dial on the side of the dimmer to adjust until the LED stops blinking Dimmable range from 5% to 100%.

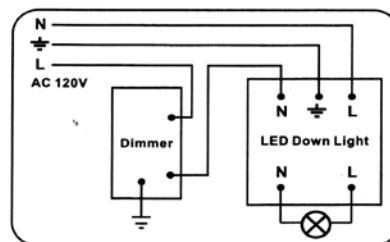
DRIVER REPLACEMENT

1. DISCONNECT MAIN POWER AT FUSE OR CIRCUIT BREAKER.
2. Pull the RETROFIT TRIM down from the RECESSED HOUSING. Unplug the SOCKET ADAPTER from the SOCKET.
3. Separate the LED DRIVER CONNECTOR from the RETROFIT TRIM CONNECTOR.
4. Remove the LED DRIVER SCREWS and separate the OLD LED DRIVER from the RETROFIT TRIM and replace it with NEW LED DRIVER, securing it in place using the LED DRIVER SCREWS.
5. Connect the LED DRIVER CONNECTOR to the RETROFIT TRIM CONNECTOR.
6. Re-install the RETROFIT TRIM into the RECESSED HOUSING.

THREE-YEAR LIMITED WARRANTY

Warrant this product to be free from defects in material and workmanship for three years from the original date of purchase by the consumer. This warranty is limited to the counter replacement at the time of purchase, with the original purchase receipt. We will not be liable for the loss or damage of any kind, whether based on warranty contract or negligence, and arising in connection with the sale, use or repair of the product claimed to be defective, some states do not allow the exclusion or limitation of incidental or consequential damages so the above limitation may not apply to you. This warranty gives you specific legal rights and you may also have other rights, which vary from state to state. Misuse, accident, improper installation or maintenance will also void the warranty.

Cri	Model	Housing	Input Voltage	Wattage	Lumen
80	LED-3RF	3"	120V,50-60Hz	6W	450
90	LED-3RF	3"	120V,50-60Hz	6W	400
80	LED-4NRF	4"	120V,50-60Hz	10W	800
90	LED-4NRF	4"	120V,50-60Hz	10W	700
80	LED-4PRF	4"	120V,50-60Hz	10W	800
90	LED-4PRF	4"	120V,50-60Hz	10W	700
80	LED-4F	4"	120V,50-60Hz	10W	800
80	LED-56NRF	5"/6"	120V,50-60Hz	15W	1000



MADE IN P.R.C.