



6" ROUND SHALLOW RECESSED IN-GROUND LIGHT 24V 15W 3000K (WARM WHITE)

Specifications



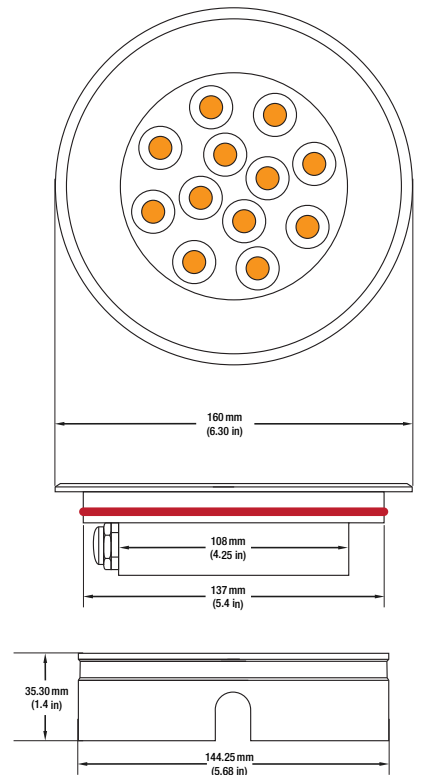
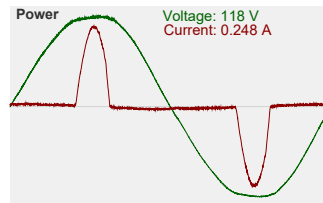
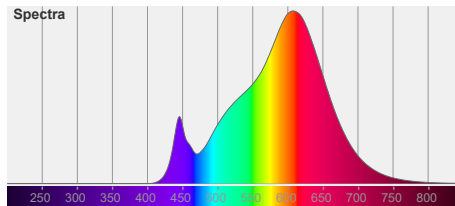
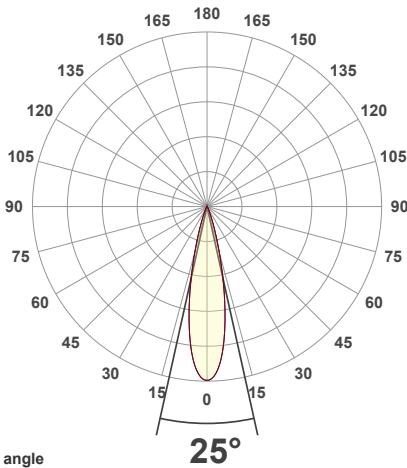
| | |
|------------------------------------|--------------------------------------------------------------------------------------------------------------|
| Model No.: | UL-1201-1500-I |
| Input Voltage: | 24V DC |
| Wattage: | 15W |
| Light Source: | 12 LEDs |
| Bulb Type: | Integrated LED |
| Color Temperature: | 3000K (Warm White) |
| Housing Material: | Die-cast Aluminum body |
| Cap Material: | Stainless Steel |
| Beam Angle: | 15° or 25° (mention in the notes before buying) |
| Brightness: | 1200-1500Lm |
| IP Rating: | IP67 (Outdoor rated) |
| Dimmable: | Yes |
| Product Content: | Uplight with a 3ft wire, housing, push springs |
| Cable Size: | Length: 100cm (39.3in) Diameter: 7.5mm (0.3in) 2 x 18AWG |
| Dimensions with housing: | Base Diameter: 144.25mm (5.68in) Diameter: 160mm (6.31in) Height: 35.30mm (1.4in) |
| Dimensions without housing: | Base Diameter: 108mm (4.25in) Diameter: 160mm (6.31in) Height: 32mm (1.25in) |
| Certification: | CE |



SKU#: 666561416812

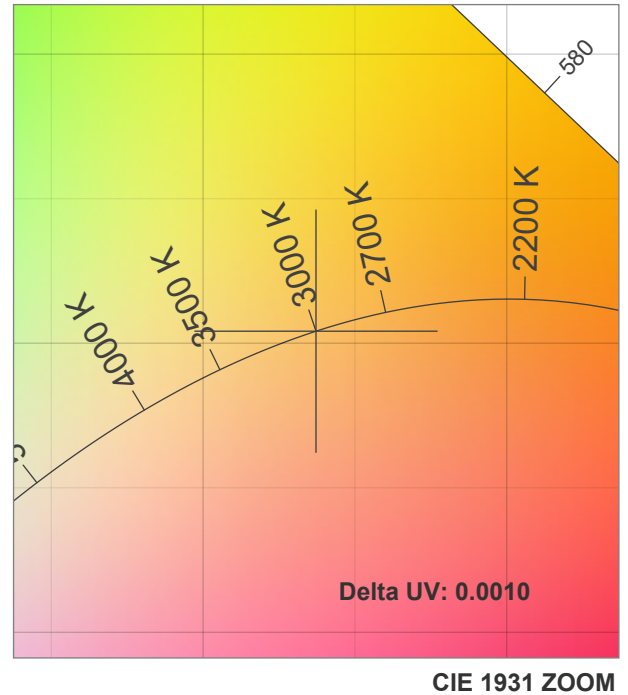
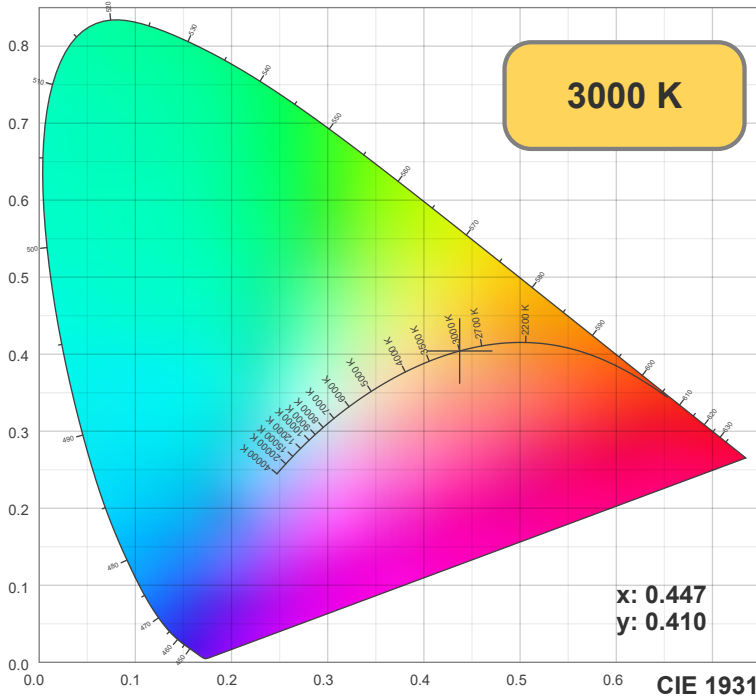
Features

- High-quality round shallow recessed in-ground light designed for outdoor applications.
- Features 12 integrated LEDs and a warm white color temperature of 3000K for a unique ambiance or functional illumination.
- Powered by a 24V DC operating voltage with a total power consumption of 15W, making it energy-efficient.
- Made of durable die-cast aluminum body with a stainless steel cap color finish, resistant to weather and corrosion.
- Concave and convex lens type provides a unique and diffused light effect.
- IP67 rating ensures that it can withstand dust, rain, and other environmental factors.
- Beam angle of 15° or 25° for narrow and focused distribution of light, ideal for accent lighting.
- Dimmable, giving you full control over the light intensity.
- Comes with an uplight with a 3ft wire, housing, and push springs for easy installation.

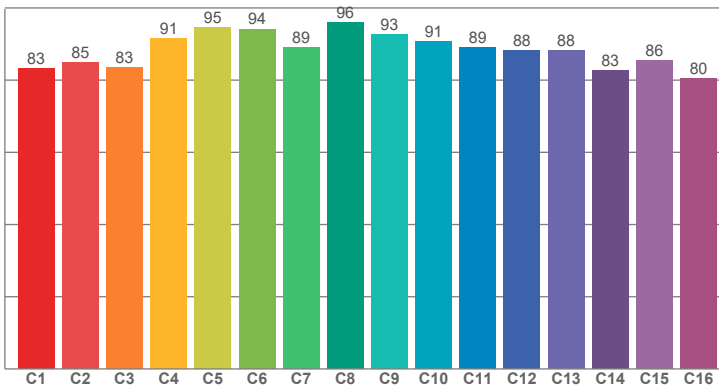


Disclaimer

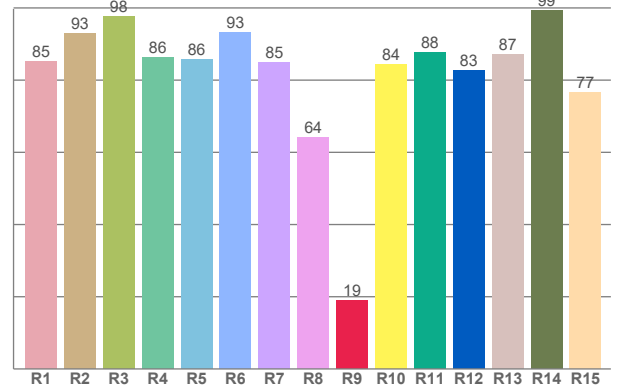
The data and information contained in this specification sheet are subject to change without notice; the ratings supplied are provided based on the product manufacturer. The information contained in this specification sheet should not be considered a warranty, expressed or implied, including, but not limited to, a warranty of merchantability or fitness for a particular purpose. In no event shall LED Lights and Parts be liable for any incidental or consequential damages resulting from the use, misuse, or inability to use the product. This exclusion applies regardless of whether such damages are sought based on breach of warranty, breach of contract, negligence, strict liability in tort, or any other legal theory.



TM30: 88.4



CRI: 86.2 (R1-R8)



CRI R values, only R1-R8 are used to calculate final CRI value

| R1 | R2 | R3 | R4 | R5 | R6 | R7 | R8 | R9 | R10 | R11 | R12 | R13 | R14 | R15 |
|-------|-------|-------|-------|-------|-------|-------|-------|-------|-------|-------|-------|-------|-------|-------|
| 85.14 | 93.02 | 97.58 | 86.35 | 85.74 | 93.14 | 84.98 | 64.02 | 18.96 | 84.36 | 87.57 | 82.67 | 87.12 | 99.33 | 76.58 |

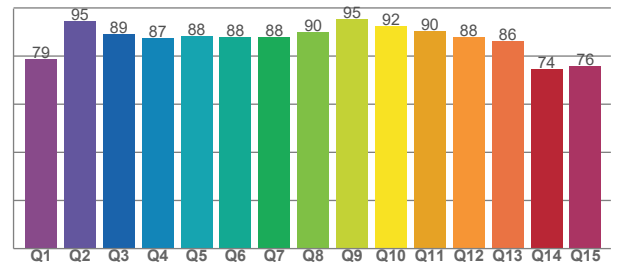
TM30 C values, 16 binned values out of total of 99 C values

| C1 | C2 | C3 | C4 | C5 | C6 | C7 | C8 | C9 | C10 | C11 | C12 | C13 | C14 | C15 | C16 |
|-------|-------|-------|-------|-------|-------|-------|-------|-------|-------|-------|-------|-------|-------|-------|-------|
| 83.12 | 84.97 | 83.45 | 91.44 | 94.50 | 94.16 | 89.12 | 96.03 | 92.74 | 90.75 | 88.95 | 88.16 | 88.30 | 82.74 | 85.54 | 80.48 |

CQS Q values

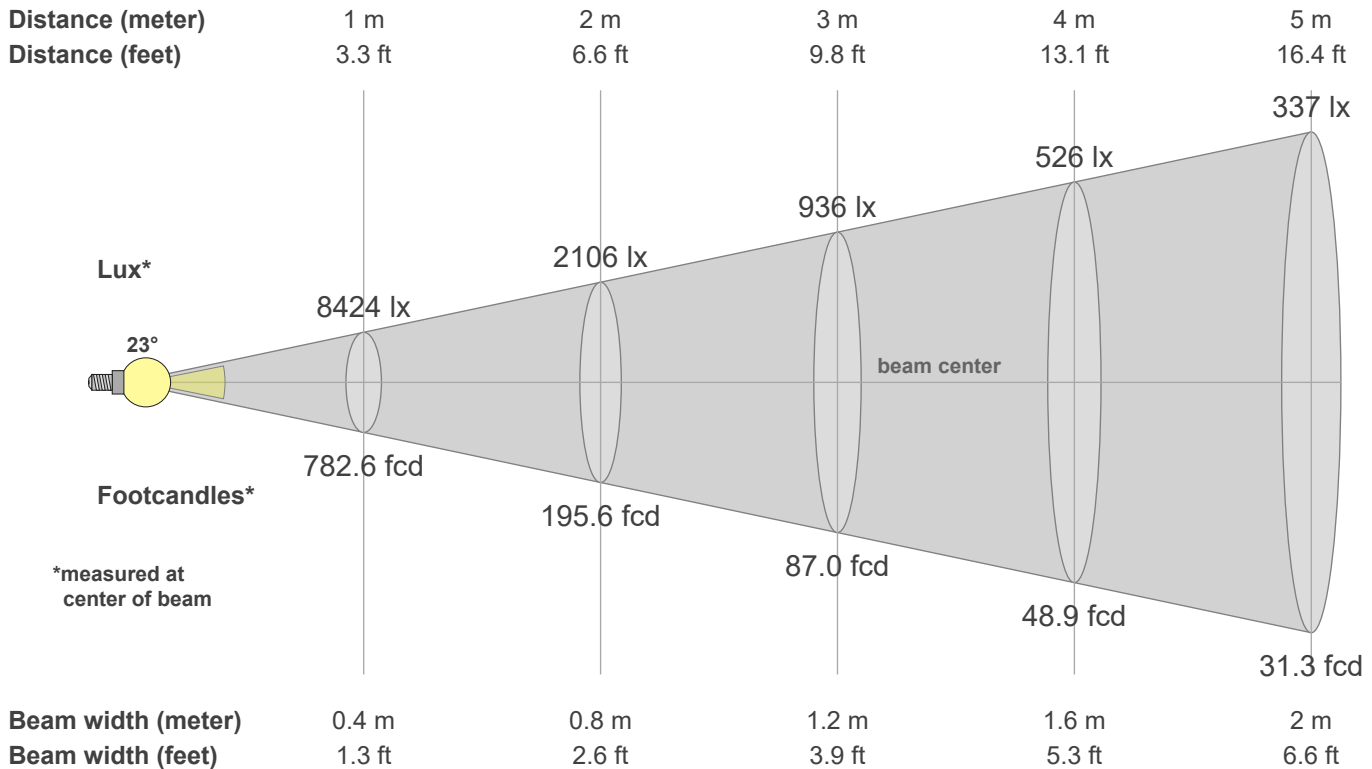
| Q1 | Q2 | Q3 | Q4 | Q5 | Q6 | Q7 | Q8 | Q9 | Q10 | Q11 | Q12 | Q13 | Q14 | Q15 |
|-------|-------|-------|-------|-------|-------|-------|-------|-------|-------|-------|-------|-------|-------|-------|
| 78.84 | 94.67 | 88.95 | 87.49 | 88.16 | 87.87 | 87.85 | 89.77 | 95.33 | 92.28 | 90.46 | 88.02 | 86.22 | 74.49 | 75.93 |

CQS: 85.6



Color parameters

| CCT | CRI | CRI R9 | TM30 Rf | TM30 Rg | CQS | x | y | u | v | Duv |
|--------|------|--------|---------|---------|------|-----|-----|-----|-----|--------|
| 3000 K | 86.2 | 19.0 | 88.4 | 97.0 | 85.6 | 0.4 | 0.4 | 0.3 | 0.3 | 0.0011 |



Intensities in 0° c-plane

| 0° | 1° | 2° | 3° | 4° | 5° | 6° | 7° | 8° | 9° | 10° | 11° | 12° | 13° | 14° | 15° | 16° | 17° | 18° | 19° |
|------|------|------|------|------|------|------|------|------|------|------|------|------|------|------|------|------|------|------|-----|
| 8424 | 8393 | 8287 | 8106 | 7848 | 7516 | 7112 | 6644 | 6124 | 5569 | 4994 | 4410 | 3829 | 3270 | 2751 | 2282 | 1865 | 1508 | 1208 | 959 |
| 100% | 100% | 98% | 96% | 93% | 89% | 84% | 79% | 73% | 66% | 59% | 52% | 45% | 39% | 33% | 27% | 22% | 18% | 14% | 11% |

Intensities in 90° c-plane

| 0° | 1° | 2° | 3° | 4° | 5° | 6° | 7° | 8° | 9° | 10° | 11° | 12° | 13° | 14° | 15° | 16° | 17° | 18° | 19° |
|------|------|------|------|------|------|------|------|------|------|------|------|------|------|------|------|------|------|------|-----|
| 8424 | 8393 | 8287 | 8106 | 7848 | 7516 | 7112 | 6644 | 6124 | 5569 | 4994 | 4410 | 3829 | 3270 | 2751 | 2282 | 1865 | 1508 | 1208 | 959 |
| 100% | 100% | 98% | 96% | 93% | 89% | 84% | 79% | 73% | 66% | 59% | 52% | 45% | 39% | 33% | 27% | 22% | 18% | 14% | 11% |

Intensities in 180° c-plane

| 0° | 1° | 2° | 3° | 4° | 5° | 6° | 7° | 8° | 9° | 10° | 11° | 12° | 13° | 14° | 15° | 16° | 17° | 18° | 19° |
|------|------|------|------|------|------|------|------|------|------|------|------|------|------|------|------|------|------|------|-----|
| 8424 | 8393 | 8287 | 8106 | 7848 | 7516 | 7112 | 6644 | 6124 | 5569 | 4994 | 4410 | 3829 | 3270 | 2751 | 2282 | 1865 | 1508 | 1208 | 959 |
| 100% | 100% | 98% | 96% | 93% | 89% | 84% | 79% | 73% | 66% | 59% | 52% | 45% | 39% | 33% | 27% | 22% | 18% | 14% | 11% |

Intensities in 270° c-plane

| 0° | 1° | 2° | 3° | 4° | 5° | 6° | 7° | 8° | 9° | 10° | 11° | 12° | 13° | 14° | 15° | 16° | 17° | 18° | 19° |
|------|------|------|------|------|------|------|------|------|------|------|------|------|------|------|------|------|------|------|-----|
| 8424 | 8393 | 8287 | 8106 | 7848 | 7516 | 7112 | 6644 | 6124 | 5569 | 4994 | 4410 | 3829 | 3270 | 2751 | 2282 | 1865 | 1508 | 1208 | 959 |
| 100% | 100% | 98% | 96% | 93% | 89% | 84% | 79% | 73% | 66% | 59% | 52% | 45% | 39% | 33% | 27% | 22% | 18% | 14% | 11% |

| Beam angle 50% | Field angle 10% | Cutoff angle 2.5% | Intensity ratio in 120° cone | Intensity ratio in 90° cone |
|----------------|-----------------|-------------------|------------------------------|-----------------------------|
| 22.7° | 39.1° | 52.4° | 99.4% | 97.9% |