



9" ROUND SURFACE MOUNT PANEL 120V, 18W, 4000K (NATURAL WHITE)

Specifications



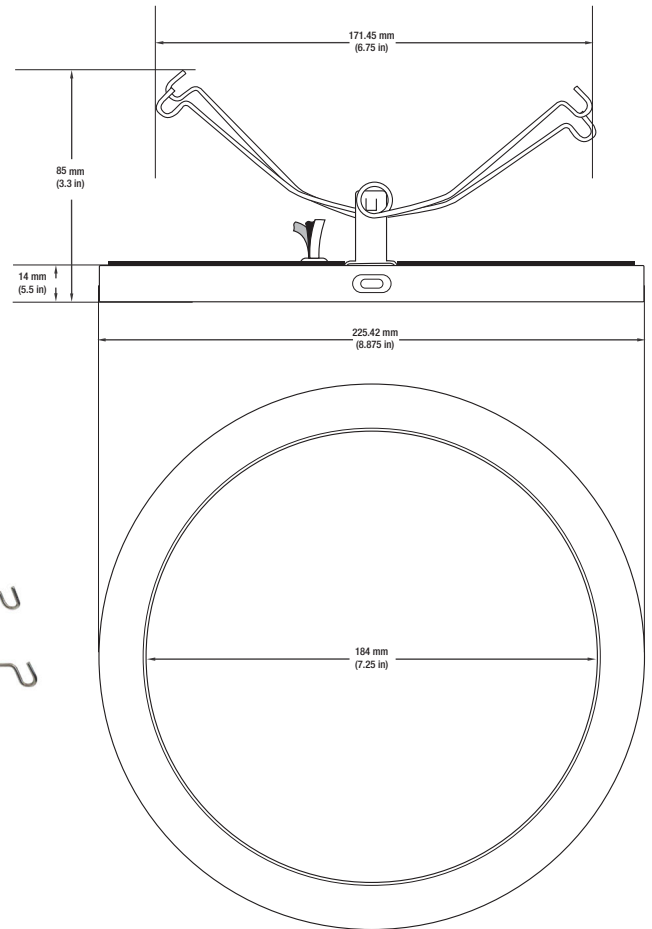
Model No.:	WOR-PLR9-18-A1-40-2835-SM
Input Voltage:	120V AC
Wattage:	18W
Color Temperature:	4000K (Natural White)
Luminous Flux:	1260 Lumens
Beam Angle:	120°
Trim Color:	White
Dimmable:	Yes
Rendering Index:	CRI>80
IP Rating:	IP20 (Indoor use only)
Dimensions(Panel):	Diameter: 225mm (8.85") Depth: 15mm (0.6")
Certification:	ETL



SKU: 666561416089

Features

- Also available in warm white (3000K) color temperature.
- Has a high-quality reflector, avoids glaring.
- Rated CRI>80 and meets the Canadian and United States standards.
- Light is integrated at the sides within the fixture. provides even light distribution without flicker.
- Widely applicable for the ceiling in both commercial and residential buildings.
- Comes along with the steps for easy installation using different methods.
- Can be mounted on the surface directly.
- Can be screwed in an E26 socket in both J-box or regular housing.
- Has a lifespan of 35,000 hours.
- Dissipates very less heat and is safe to touch.
- Suitable for dry and Damp Locations.



Disclaimer

The data and information contained in this specification sheet are subject to change without notice; the ratings supplied are provided based on the product manufacturer. The information contained in this specification sheet should not be considered a warranty, expressed or implied, including, but not limited to, a warranty of merchantability or fitness for a particular purpose. In no event shall LED Lights and Parts be liable for any incidental or consequential damages resulting from the use, misuse, or inability to use the product. This exclusion applies regardless of whether such damages are sought based on breach of warranty, breach of contract, negligence, strict liability in tort, or any other legal theory.



LED Lights and Parts

WORLD OF LED LIGHTS

Light efficiency:

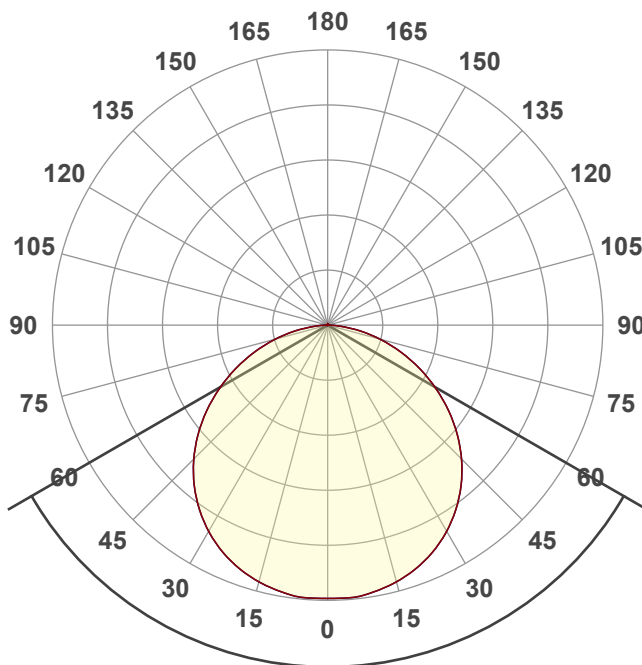
70 Lumen/Watt

Light quality:

CRI: 79.1

Color temperature:

4000 K



Beam angle

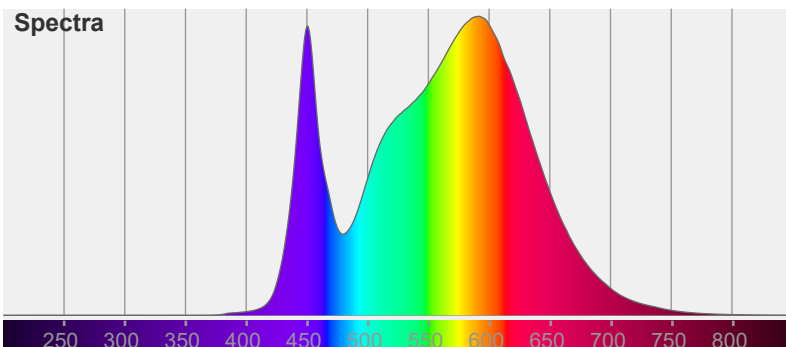
120°

Color



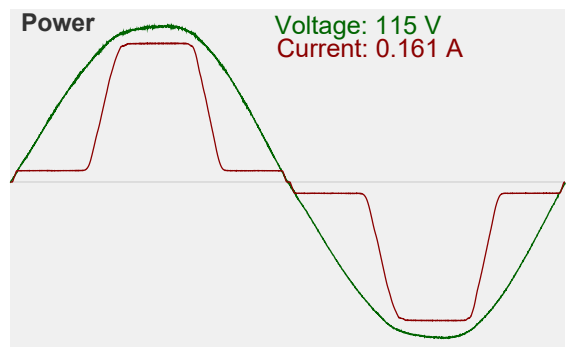
CIE1931
x: 0.380
y: 0.382

Spectra

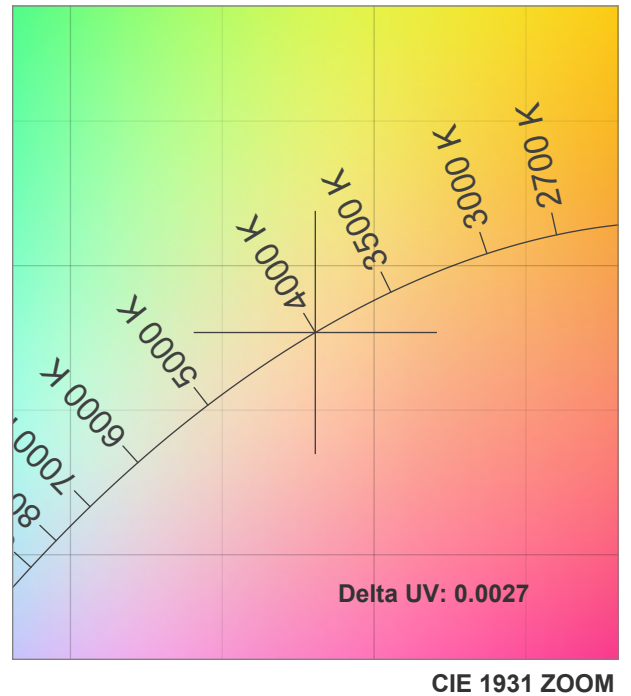
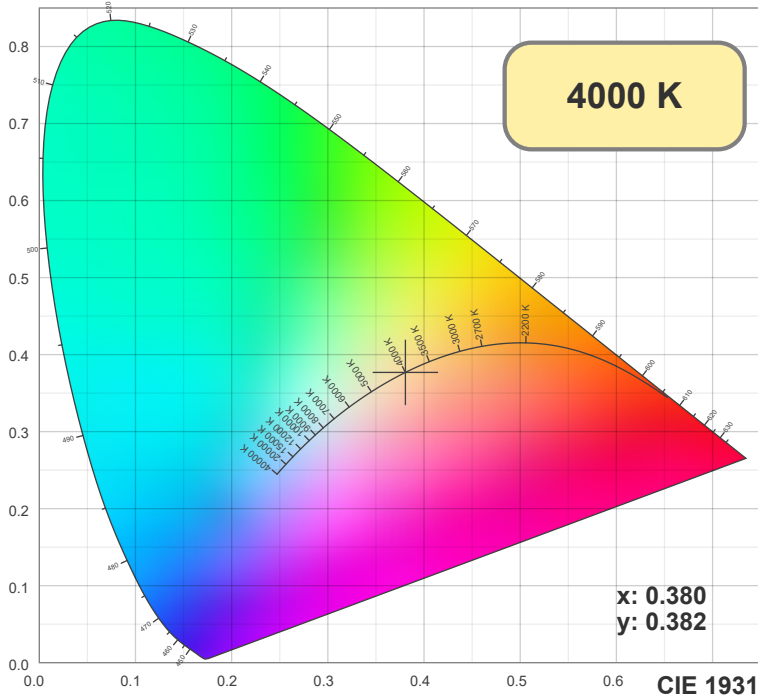


Power

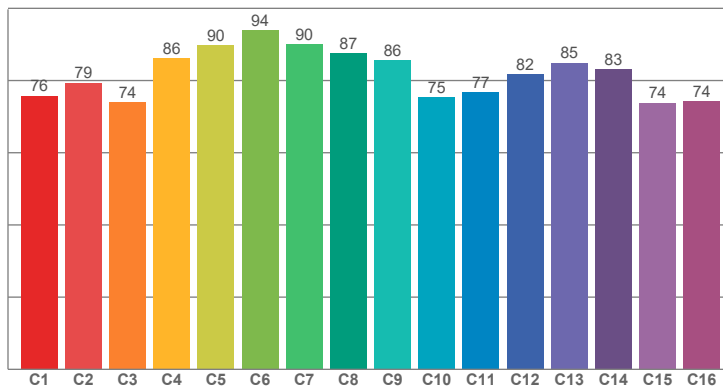
Voltage: 115 V
Current: 0.161 A



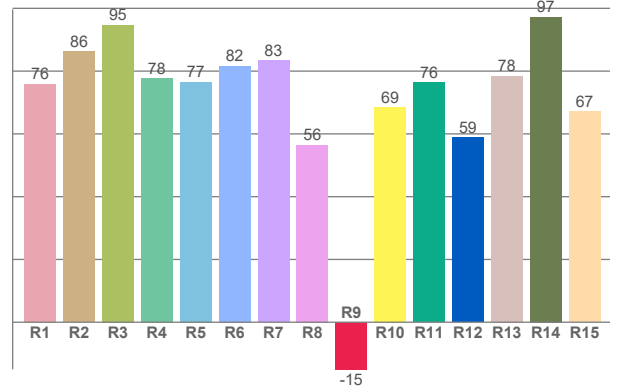
Light measurement was created using the Viso Systems - Light Inspector. www.visosystems.com



TM30: 81.9



CRI: 79.1 (R1-R8)



CRI R values, only R1-R8 are used to calculate final CRI value

R1	R2	R3	R4	R5	R6	R7	R8	R9	R10	R11	R12	R13	R14	R15
75.95	86.28	94.69	77.77	76.57	81.70	83.44	56.49	-15.01	68.51	76.33	58.86	78.45	97.30	67.04

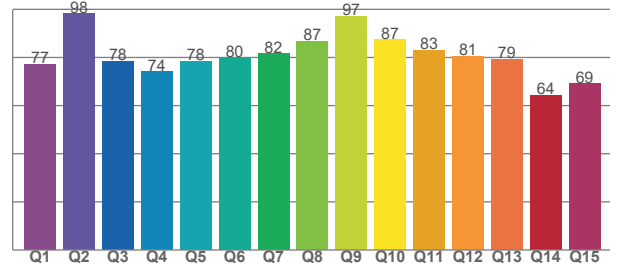
TM30 C values, 16 binned values out of total of 99 C values

C1	C2	C3	C4	C5	C6	C7	C8	C9	C10	C11	C12	C13	C14	C15	C16
75.74	79.34	73.91	86.20	89.77	93.97	89.98	87.48	85.61	75.38	76.77	81.63	84.91	83.07	73.82	74.18

CQS Q values

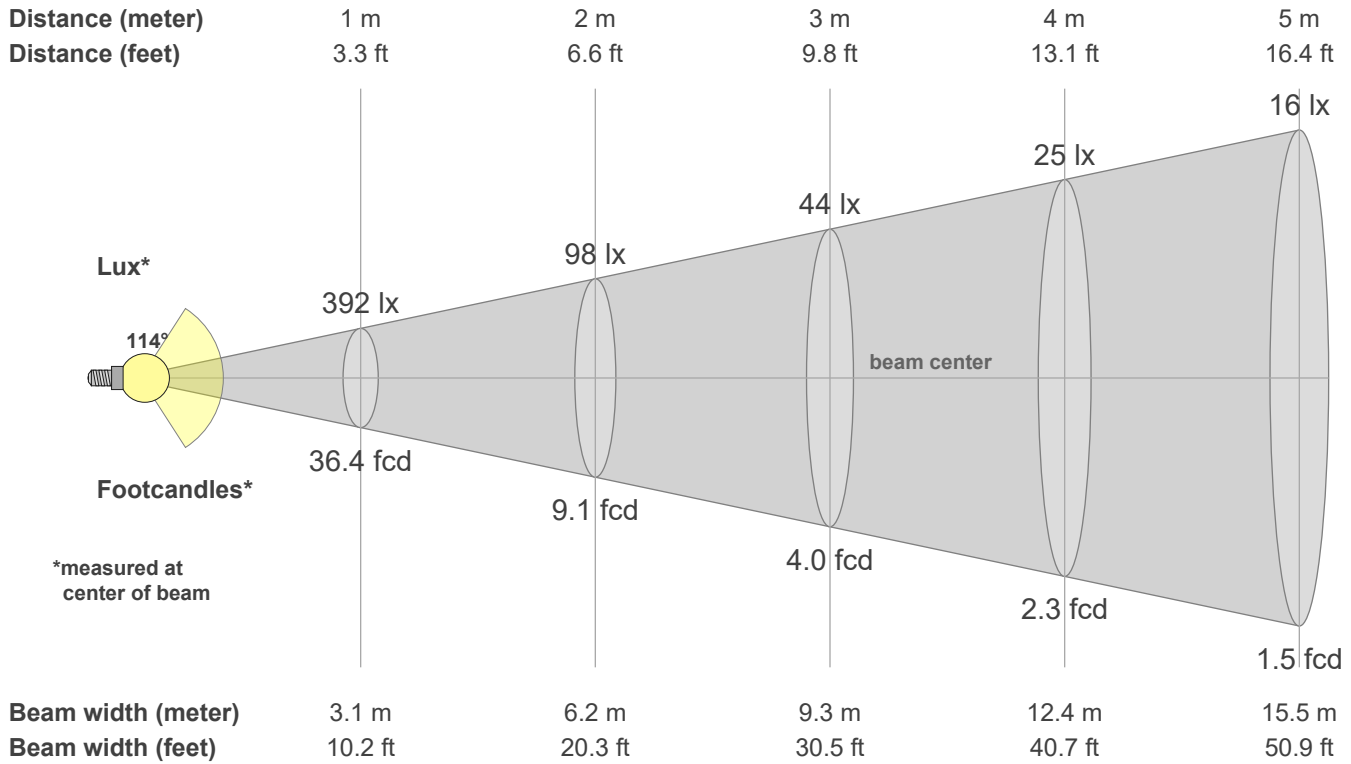
Q1	Q2	Q3	Q4	Q5	Q6	Q7	Q8	Q9	Q10	Q11	Q12	Q13	Q14	Q15
77.19	98.06	78.28	73.98	78.35	79.68	81.51	86.62	97.03	87.30	82.96	80.53	79.25	64.18	68.98

CQS: 79.0



Color parameters

CCT	CRI	CRI R9	TM30 Rf	TM30 Rg	CQS	x	y	u	v	Duv
4000 K	79.1	-15.0	81.9	93.5	79.0	0.4	0.4	0.2	0.3	0.0027



Intensities in 0° c-plane

0°	5°	10°	15°	20°	25°	30°	35°	40°	45°	50°	55°	60°	65°	70°	75°	80°	85°	90°	95°
392	392	388	381	371	358	341	321	298	271	242	211	177	144	110	78	47	19	3	1
100%	100%	99%	97%	95%	91%	87%	82%	76%	69%	62%	54%	45%	37%	28%	20%	12%	5%	1%	0%

Intensities in 90° c-plane

0°	5°	10°	15°	20°	25°	30°	35°	40°	45°	50°	55°	60°	65°	70°	75°	80°	85°	90°	95°
392	392	388	381	371	358	341	321	298	271	242	211	177	144	110	78	47	19	3	1
100%	100%	99%	97%	95%	91%	87%	82%	76%	69%	62%	54%	45%	37%	28%	20%	12%	5%	1%	0%

Intensities in 180° c-plane

0°	5°	10°	15°	20°	25°	30°	35°	40°	45°	50°	55°	60°	65°	70°	75°	80°	85°	90°	95°
392	392	388	381	371	358	341	321	298	271	242	211	177	144	110	78	47	19	3	1
100%	100%	99%	97%	95%	91%	87%	82%	76%	69%	62%	54%	45%	37%	28%	20%	12%	5%	1%	0%

Intensities in 270° c-plane

0°	5°	10°	15°	20°	25°	30°	35°	40°	45°	50°	55°	60°	65°	70°	75°	80°	85°	90°	95°
392	392	388	381	371	358	341	321	298	271	242	211	177	144	110	78	47	19	3	1
100%	100%	99%	97%	95%	91%	87%	82%	76%	69%	62%	54%	45%	37%	28%	20%	12%	5%	1%	0%

Beam angle 50%	Field angle 10%	Cutoff angle 2.5%	Intensity ratio in 120° cone	Intensity ratio in 90° cone
114.4°	162.6°	175.4°	78.2%	53.1%