

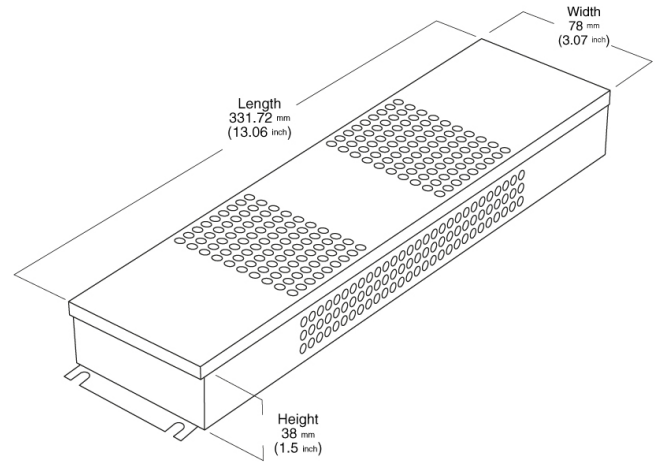
## Model: VBD-012-048DM

|                                   |                               |
|-----------------------------------|-------------------------------|
| <b>Input Voltage:</b>             | 100-130V AC                   |
| <b>Input Current at Max Load:</b> | 0.76 A                        |
| <b>Frequency:</b>                 | 47-63 Hz                      |
| <b>Output Voltage:</b>            | 12V DC                        |
| <b>Output Current:</b>            | 4.0 A                         |
| <b>Max Power:</b>                 | 48W                           |
| <b>Dimensions L x W x H:</b>      | 332mm x 78mm x 38mm           |
| <b>Class Certification:</b>       | Class 2                       |
| <b>Weight:</b>                    | 0.922 kg                      |
| <b>IP Rating:</b>                 | IP20 (Dry and Damp Locations) |
| <b>Dimmable:</b>                  | Triac/ Phase-cut Dimming      |
| <b>Wiring/Housing:</b>            | Hardwire                      |
| <b>Operating Temperature:</b>     | at least 90°C                 |
| <b>Standards:</b>                 | FC/UL/RoHS                    |

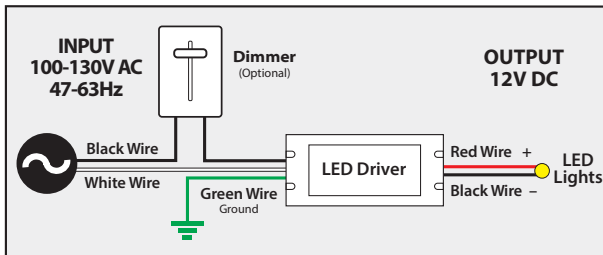
Job Name: \_\_\_\_\_

Distributor: \_\_\_\_\_

Type: \_\_\_\_\_

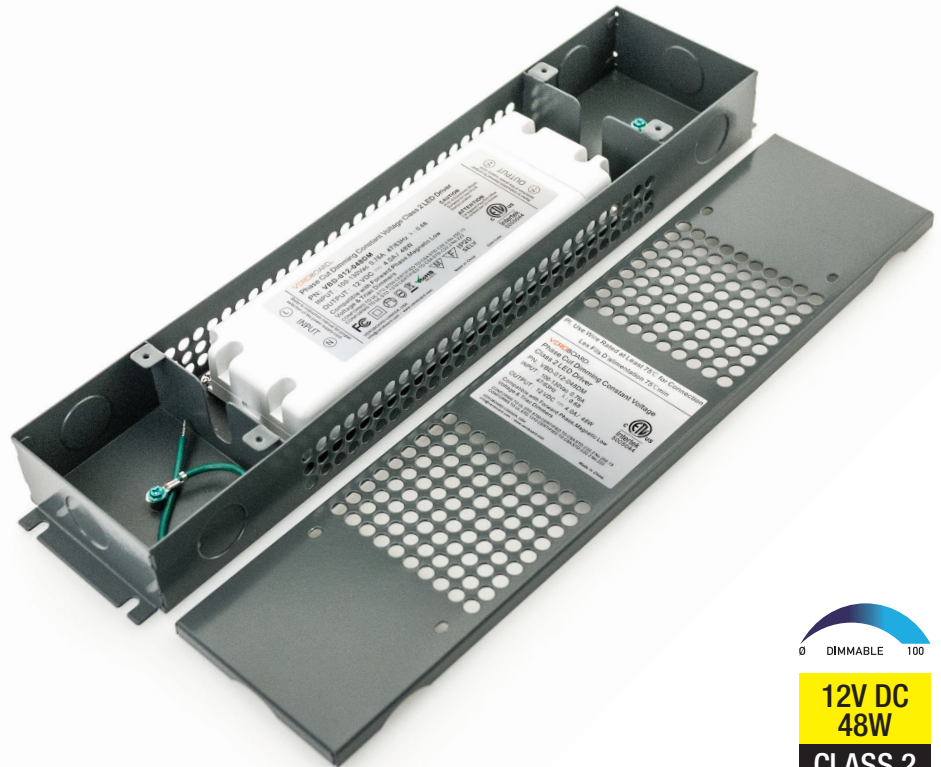


### Installation Diagram



### Dimming

Veroboard Phase Cut Dimming Constant Voltage LED drivers work with any standard Leading Edge, MLV, or TRIAC dimmers. The dimmer switch must be installed on the 120V AC side of the driver.



**12V DC**  
**48W**  
**CLASS 2**

**SKU: 666561415754**