



## 2.5" ROUND RECESSED INGROUND LIGHT 24V 2.6W 3000K (WARM WHITE)

### Specifications



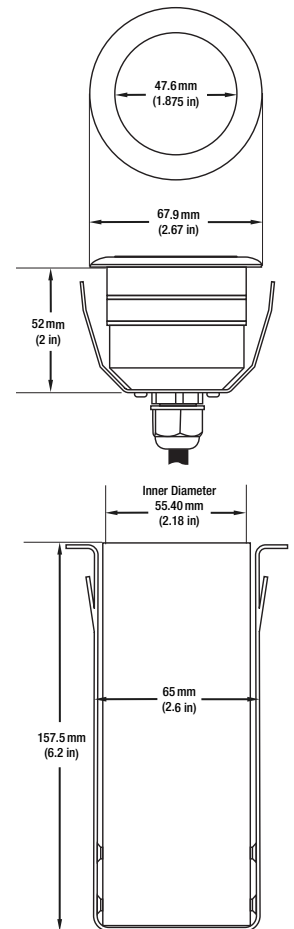
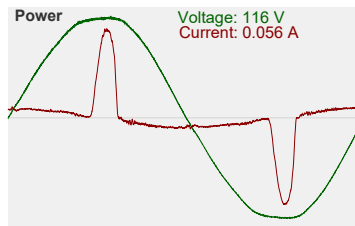
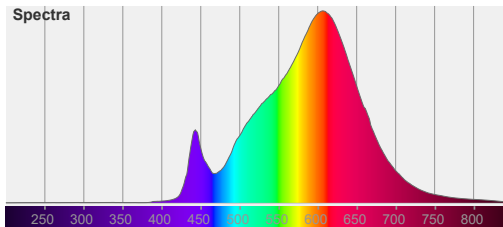
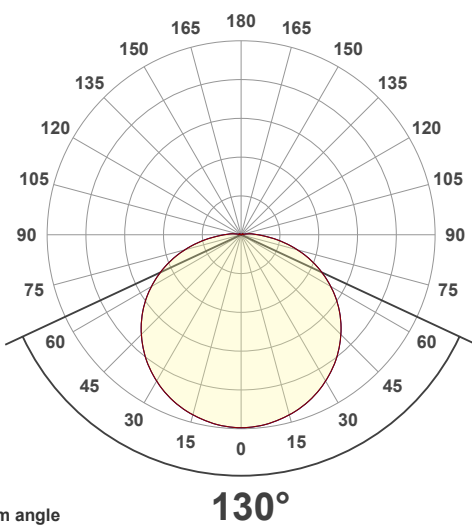
<b>Model No.:</b>	D1B00136
<b>Input Voltage:</b>	24V DC
<b>Wattage:</b>	2.5W
<b>Light Source:</b>	1x2W
<b>Bulb Type:</b>	Integrated COB LED
<b>Color Temperature:</b>	3000K (Warm White)
<b>Housing Material:</b>	Die-cast Aluminum body
<b>Beam Angle:</b>	130°
<b>IP Rating:</b>	IP65 (Outdoor rated)
<b>IK Rating:</b>	IK09
<b>Dimmable:</b>	Yes
<b>Cable Size:</b>	Length: 50cm (19.6in) Diameter: 7.5mm (0.3in) 18AWG
<b>Dimensions with housing:</b>	Diameter: 68mm (2.67in) Base Diameter: 59mm (2.3in) Depth: 150mm (5.9in)
<b>Dimensions without housing:</b>	Diameter: 68mm (2.67in) Depth: 48mm (1.9in) Cut Size: 53mm (2.1in)
<b>Certification:</b>	CE



**SKU#: 666561414849**

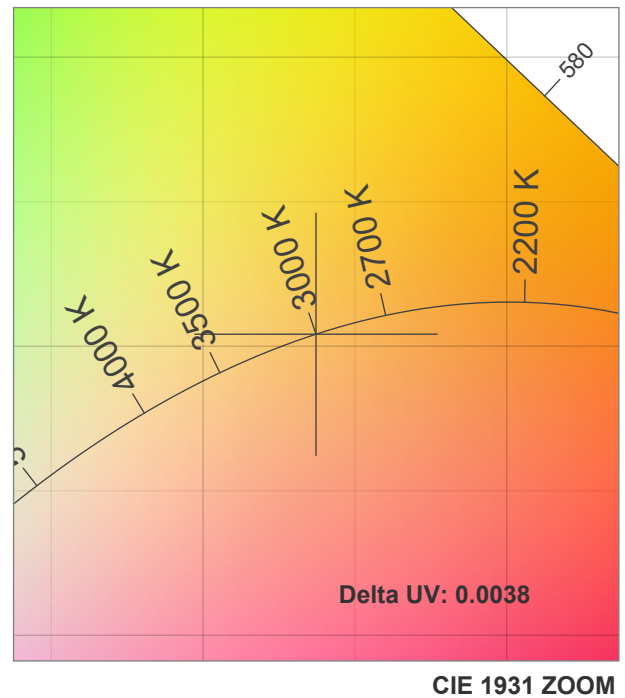
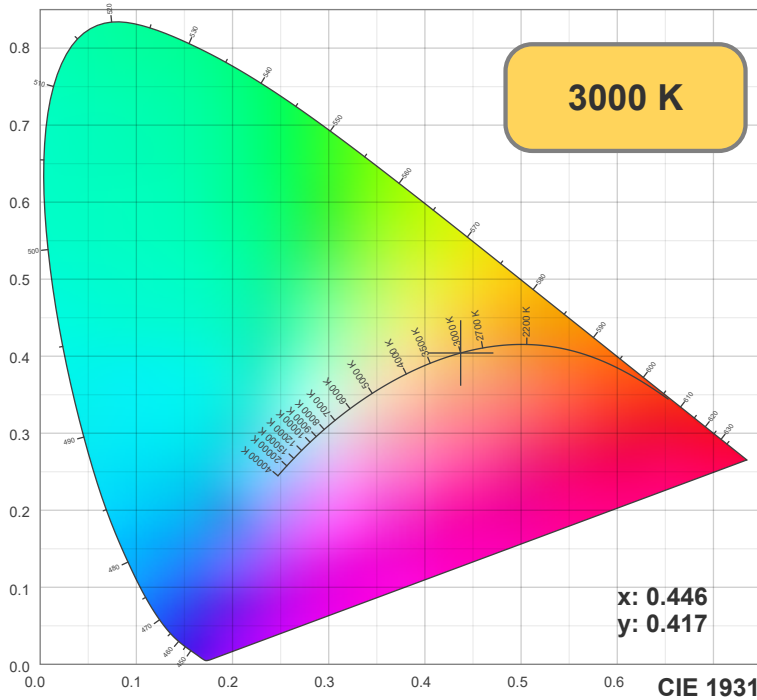
### Features

- 2.5-inch round recessed inground light.
- Designed for outdoor applications.
- Powered by a single integrated COB LED bulb.
- Provides warm white light at 3000K color temperature.
- Total power consumption of 2.5W.
- Made of durable die-cast aluminum body.
- Frosted white front cover finish and acrylic lens.
- Clean circular shape with a smooth white finish.
- Suitable for modern home settings and commercial applications.
- IP65 rating for all types of weather.
- IK09 rating for impact resistance and protection against vandalism.

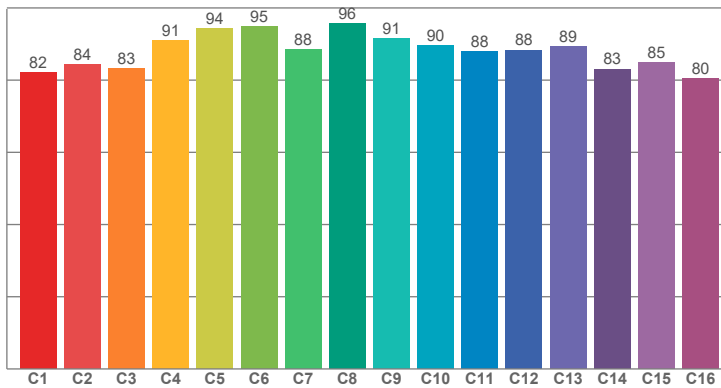


### Disclaimer

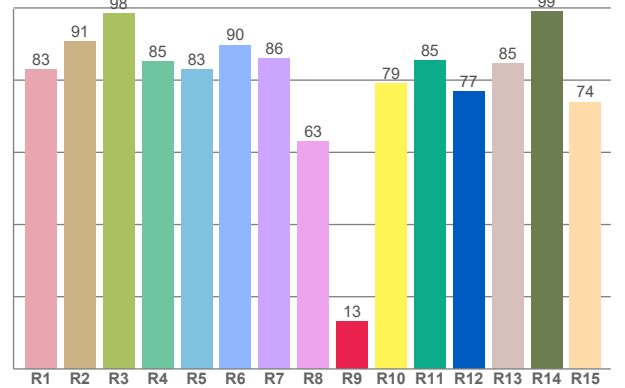
The data and information contained in this specification sheet are subject to change without notice; the ratings supplied are provided based on the product manufacturer. The information contained in this specification sheet should not be considered a warranty, expressed or implied, including, but not limited to, a warranty of merchantability or fitness for a particular purpose. In no event shall LED Lights and Parts be liable for any incidental or consequential damages resulting from the use, misuse, or inability to use the product. This exclusion applies regardless of whether such damages are sought based on breach of warranty, breach of contract, negligence, strict liability in tort, or any other legal theory.



**TM30: 87.9**



**CRI: 84.8 (R1-R8)**



**CRI R values, only R1-R8 are used to calculate final CRI value**

R1	R2	R3	R4	R5	R6	R7	R8	R9	R10	R11	R12	R13	R14	R15
82.84	90.62	98.46	85.11	83.06	89.73	85.93	62.88	13.24	78.99	85.44	76.91	84.51	99.06	73.93

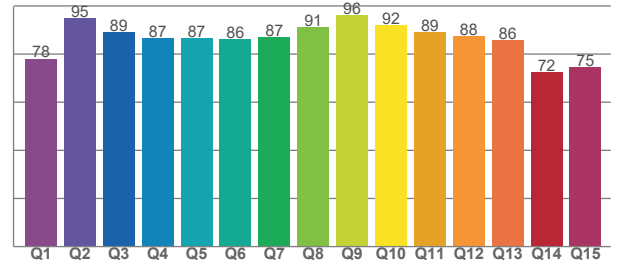
**TM30 C values, 16 binned values out of total of 99 C values**

C1	C2	C3	C4	C5	C6	C7	C8	C9	C10	C11	C12	C13	C14	C15	C16
82.06	84.35	83.18	90.96	94.21	94.88	88.50	95.60	91.49	89.61	87.85	88.35	89.26	83.09	84.91	80.35

**CQS Q values**

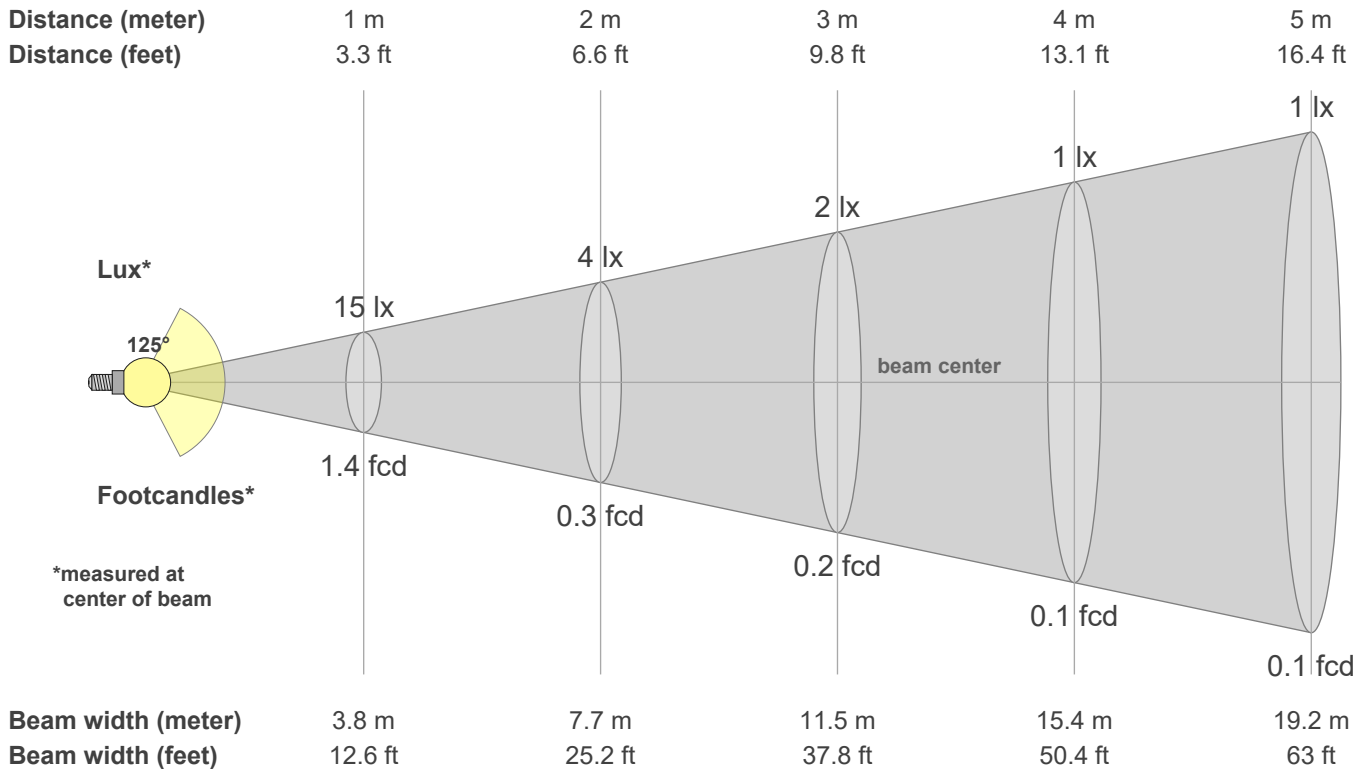
Q1	Q2	Q3	Q4	Q5	Q6	Q7	Q8	Q9	Q10	Q11	Q12	Q13	Q14	Q15
78.11	94.98	89.10	86.78	86.71	86.31	86.99	91.01	96.01	91.99	89.09	87.56	85.89	72.45	74.63

**CQS: 84.8**



## Color parameters

CCT	CRI	CRI R9	TM30 Rf	TM30 Rg	CQS	x	y	u	v	Duv
3000 K	84.8	13.2	87.9	95.8	84.8	0.4	0.4	0.3	0.3	0.0038



### Intensities in 0° c-plane

0°	5°	10°	15°	20°	25°	30°	35°	40°	45°	50°	55°	60°	65°	70°	75°	80°	85°	90°	95°
14.5	14.5	14.3	14.1	13.7	13.3	12.7	12.1	11.4	10.6	9.8	8.8	7.8	6.7	5.6	4.4	3.2	2.1	1.3	0.8
100%	100%	98%	97%	94%	91%	88%	83%	78%	73%	67%	61%	54%	46%	38%	30%	22%	15%	9%	5%

### Intensities in 90° c-plane

0°	5°	10°	15°	20°	25°	30°	35°	40°	45°	50°	55°	60°	65°	70°	75°	80°	85°	90°	95°
14.5	14.5	14.3	14.1	13.7	13.3	12.7	12.1	11.4	10.6	9.8	8.8	7.8	6.7	5.6	4.4	3.2	2.1	1.3	0.8
100%	100%	98%	97%	94%	91%	88%	83%	78%	73%	67%	61%	54%	46%	38%	30%	22%	15%	9%	5%

### Intensities in 180° c-plane

0°	5°	10°	15°	20°	25°	30°	35°	40°	45°	50°	55°	60°	65°	70°	75°	80°	85°	90°	95°
14.5	14.5	14.3	14.1	13.7	13.3	12.7	12.1	11.4	10.6	9.8	8.8	7.8	6.7	5.6	4.4	3.2	2.1	1.3	0.8
100%	100%	98%	97%	94%	91%	88%	83%	78%	73%	67%	61%	54%	46%	38%	30%	22%	15%	9%	5%

### Intensities in 270° c-plane

0°	5°	10°	15°	20°	25°	30°	35°	40°	45°	50°	55°	60°	65°	70°	75°	80°	85°	90°	95°
14.5	14.5	14.3	14.1	13.7	13.3	12.7	12.1	11.4	10.6	9.8	8.8	7.8	6.7	5.6	4.4	3.2	2.1	1.3	0.8
100%	100%	98%	97%	94%	91%	88%	83%	78%	73%	67%	61%	54%	46%	38%	30%	22%	15%	9%	5%

<b>Beam angle 50%</b>	<b>Field angle 10%</b>	<b>Cutoff angle 2.5%</b>	<b>Intensity ratio in 120° cone</b>	<b>Intensity ratio in 90° cone</b>
<b>125.0°</b>	<b>177.8°</b>	<b>199.3°</b>	<b>70.4%</b>	<b>46.3%</b>