



B7ZA0256

WHITE LED LANDSCAPING WALL LIGHT 24V 2.2W 3000K (WARM WHITE)

Specifications

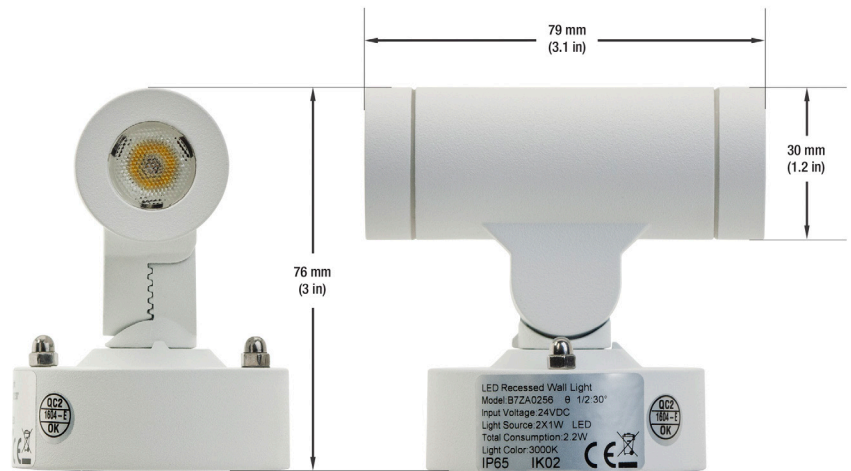
Model No.:	B7ZA0256
Input Voltage:	24V DC
Power Consumption:	2.2W
Color:	3000K (Warm White)
Dimmable:	No
Beam Angle:	35°
Housing:	Die-Casting Aluminum
Body Color:	White
IP Rating:	IP65 (Suitable for wet locations)
IK Rating:	IK02
Wire Size:	30 cm (11.8 in) 18AWG
Dimensions:	Ø 30 x 79 x 76 mm (1.2 x 3.1 x 3 in)
Certifications:	CE



SKU: 666561414825

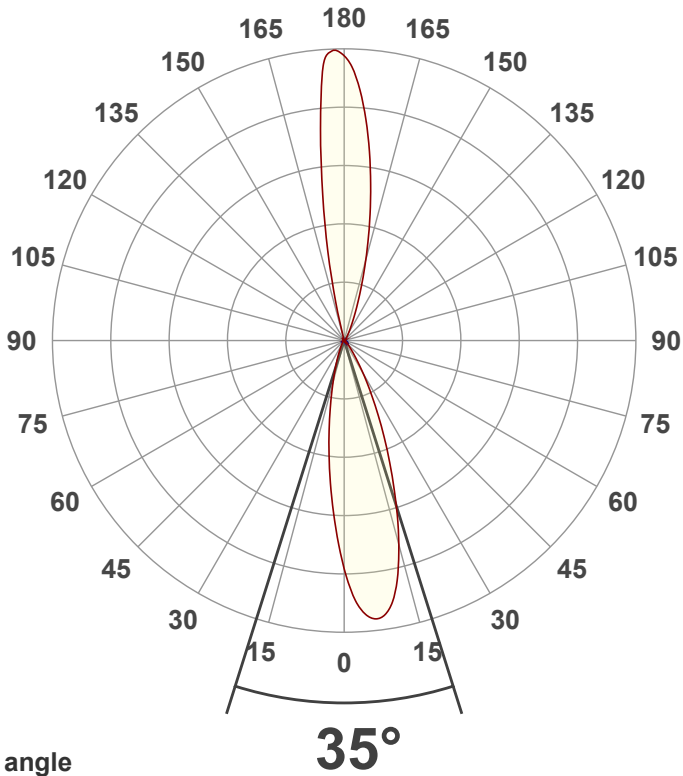
Features

- This product is an outdoor light that is commonly used as a wall sconce.
- The light dispersion is bi-directional.



Disclaimer

The data and information contained in this specification sheet are subject to change without notice; the ratings supplied are provided based on the product manufacturer. The information contained in this specification sheet should not be considered a warranty, expressed or implied, including, but not limited to, a warranty of merchantability or fitness for a particular purpose. In no event shall LED Lights and Parts be liable for any incidental or consequential damages resulting from the use, misuse, or inability to use the product. This exclusion applies regardless of whether such damages are sought based on breach of warranty, breach of contract, negligence, strict liability in tort, or any other legal theory.



Beam angle

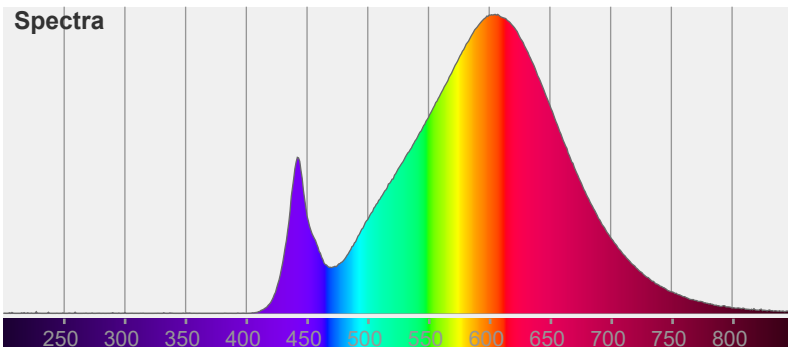


Color

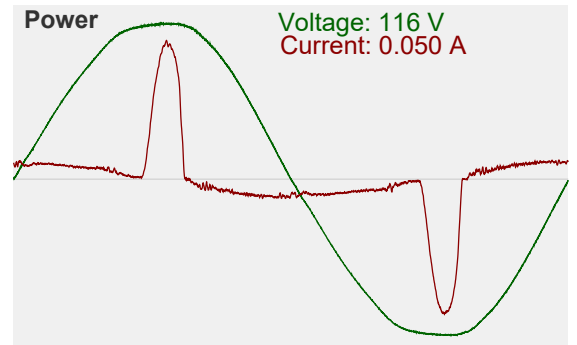


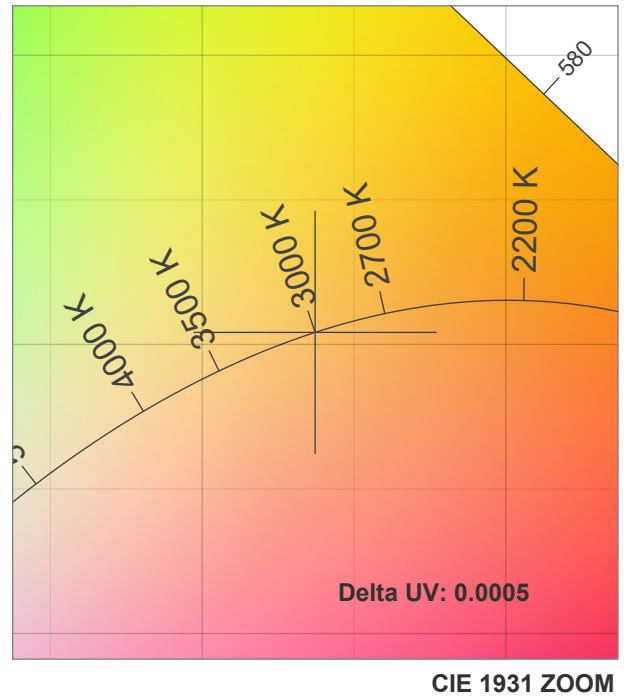
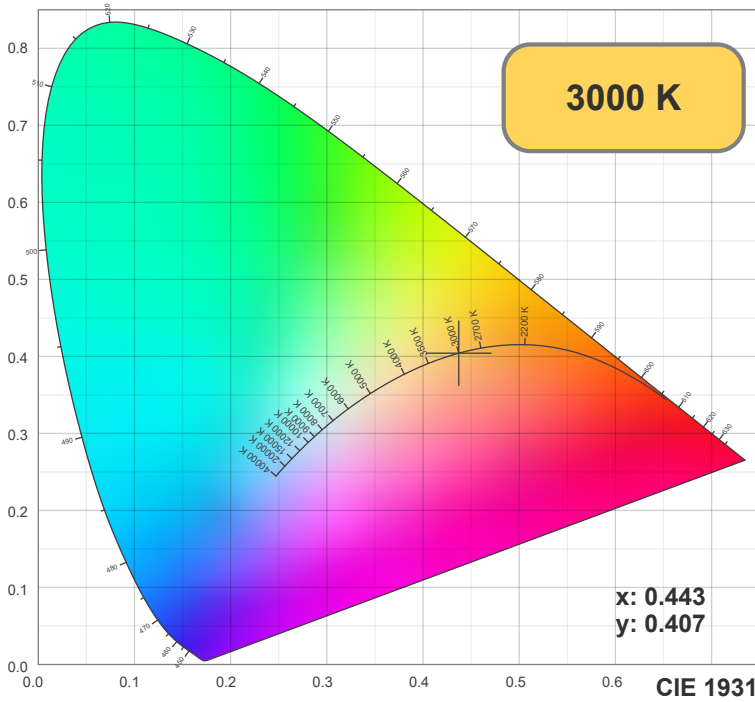
CIE1931
x: 0.443
y: 0.407

Spectra

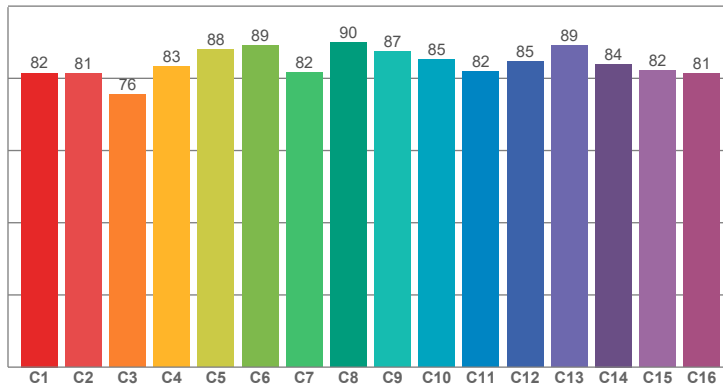


Power

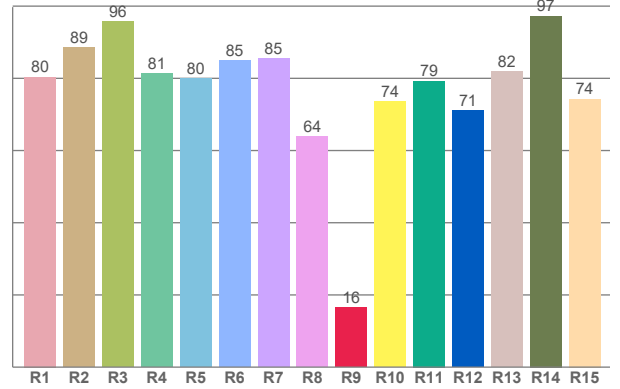




TM30: 83.9



CRI: 82.5 (R1-R8)



CRI R values, only R1-R8 are used to calculate final CRI value

R1	R2	R3	R4	R5	R6	R7	R8	R9	R10	R11	R12	R13	R14	R15
80.38	88.57	95.66	81.28	79.94	84.96	85.40	63.81	16.50	73.63	79.26	71.12	81.81	97.29	74.30

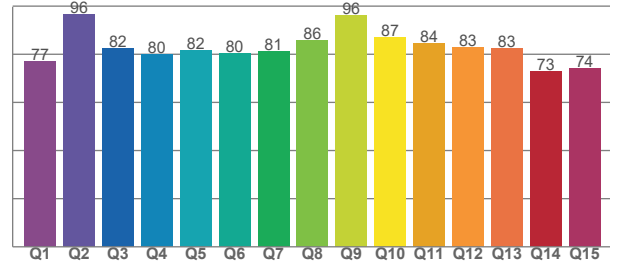
TM30 C values, 16 binned values out of total of 99 C values

C1	C2	C3	C4	C5	C6	C7	C8	C9	C10	C11	C12	C13	C14	C15	C16
81.51	81.40	75.59	83.19	88.03	89.10	81.64	89.94	87.50	85.14	81.98	84.65	89.18	83.95	82.09	81.36

CQS Q values

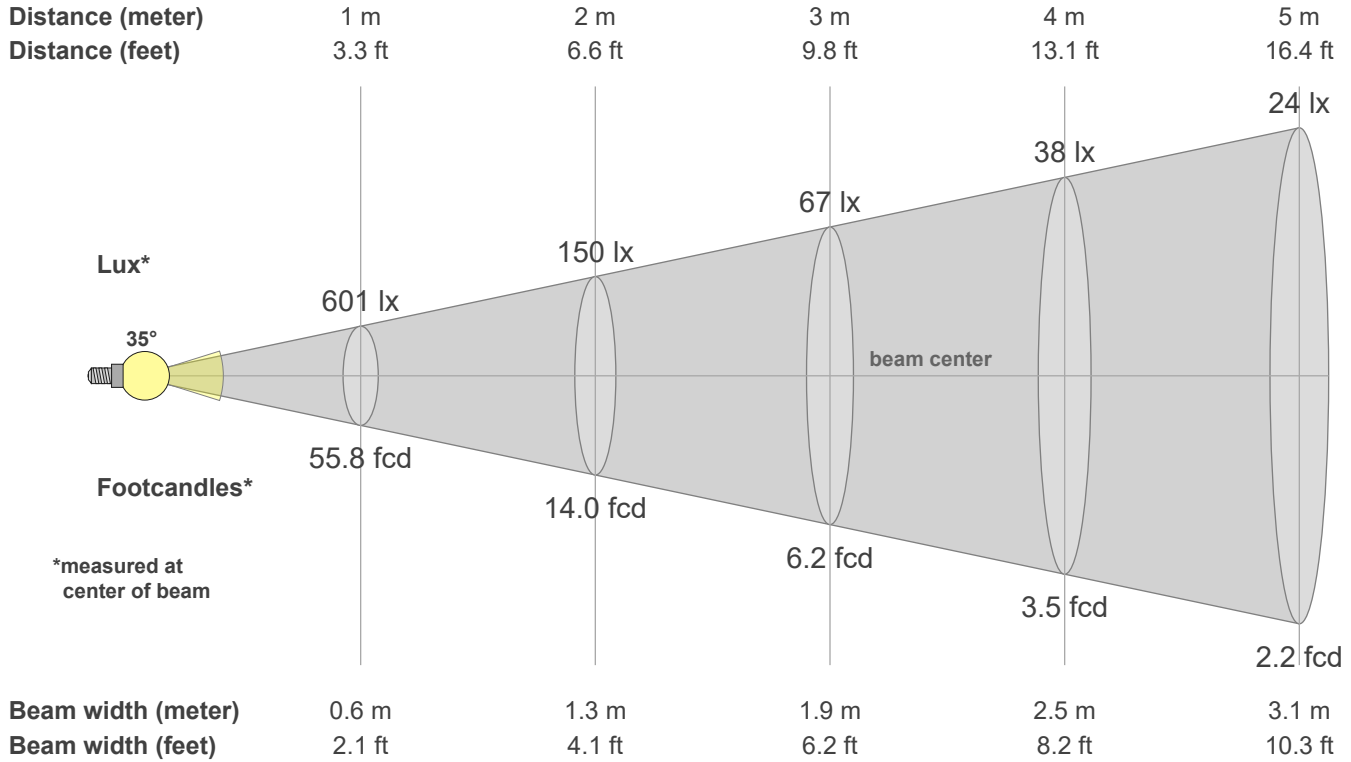
Q1	Q2	Q3	Q4	Q5	Q6	Q7	Q8	Q9	Q10	Q11	Q12	Q13	Q14	Q15
76.92	96.46	82.36	79.95	81.56	80.44	81.41	85.81	96.06	87.23	84.43	82.94	82.63	72.97	74.23

CQS: 81.7



Color parameters

CCT	CRI	CRI R9	TM30 Rf	TM30 Rg	CQS	x	y	u	v	Duv
3000 K	82.5	16.5	83.9	98.2	81.7	0.4	0.4	0.3	0.3	0.0005



Intensities in 0° c-plane

0°	2°	4°	6°	8°	10°	12°	14°	16°	18°	20°	22°	24°	26°	28°	30°	32°	34°	36°	38°
601	14	13	12	11	9	8	7	7	6	5	4	4	3	3	2	2	1	1	1
100%	2%	2%	2%	2%	2%	1%	1%	1%	1%	1%	1%	1%	1%	0%	0%	0%	0%	0%	0%

Intensities in 90° c-plane

0°	2°	4°	6°	8°	10°	12°	14°	16°	18°	20°	22°	24°	26°	28°	30°	32°	34°	36°	38°
601	1169	1121	1038	936	824	714	603	499	402	319	246	190	143	108	82	62	47	37	29
100%	195%	187%	173%	156%	137%	119%	100%	83%	67%	53%	41%	32%	24%	18%	14%	10%	8%	6%	5%

Intensities in 180° c-plane

0°	2°	4°	6°	8°	10°	12°	14°	16°	18°	20°	22°	24°	26°	28°	30°	32°	34°	36°	38°
601	18	20	23	26	29	32	36	40	44	48	52	55	59	60	61	61	59	56	53
100%	3%	3%	4%	4%	5%	5%	6%	7%	7%	8%	9%	9%	10%	10%	10%	10%	10%	9%	9%

Intensities in 270° c-plane

0°	2°	4°	6°	8°	10°	12°	14°	16°	18°	20°	22°	24°	26°	28°	30°	32°	34°	36°	38°
601	1167	1115	1035	934	824	711	603	501	405	321	250	193	147	111	85	64	49	38	30
100%	194%	186%	172%	156%	137%	118%	100%	83%	67%	53%	42%	32%	24%	18%	14%	11%	8%	6%	5%

Beam angle 50%	Field angle 10%	Cutoff angle 2.5%	Intensity ratio in 120° cone	Intensity ratio in 90° cone
34.8°	76.6°	103.0°	95.5%	88.7%