



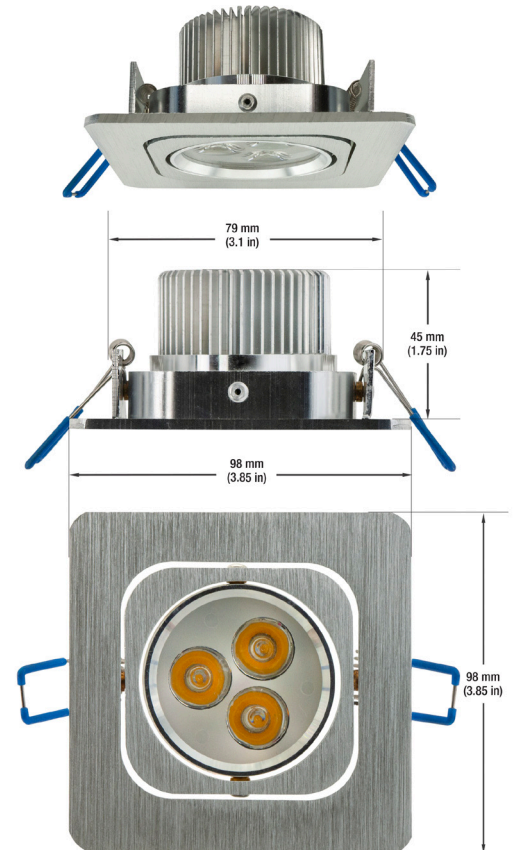
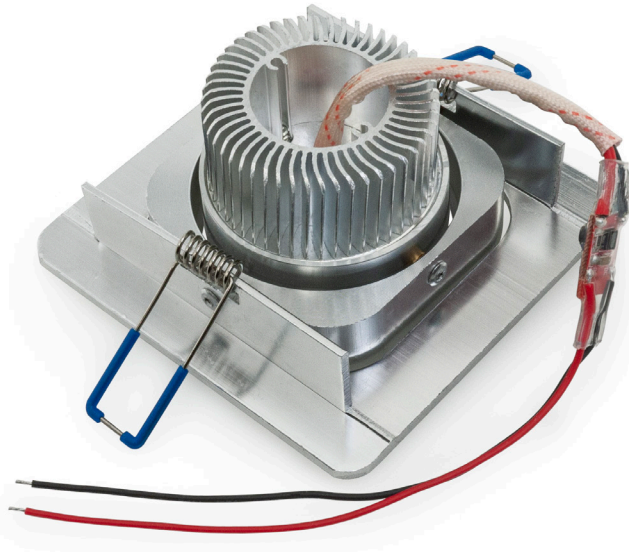
LED CEILING LIGHT TYPE7 12V 3W 3000K (WARM WHITE)

Specifications

Input Voltage:	12V
Wattage:	3W
Light Source :	3 x 1W
Color Temperature:	3000K (Warm White)
Brightness:	250 - 300 Lumens
Beam Angel:	30°
Tilt Angel:	45°
Trim Color:	Brushed Silver
Dimmable:	Yes
Rendering Index:	CRI>80
IP Rated:	IP20 (Suitable for damp locations)
Wire Length:	23 cm (9 in) 24AWG
Dimensions:	Overall Length: 98 mm (3.85 in) Depth: 45 mm (1.75 in)
Cut Size:	79 mm (3.1 in)

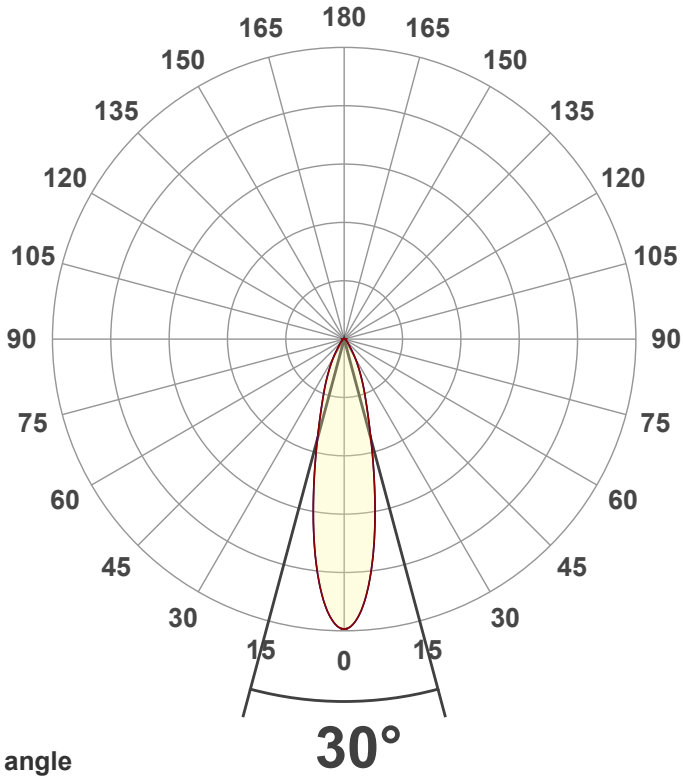


SKU: 666561414511



Disclaimer

The data and information contained in this specification sheet are subject to change without notice; the ratings supplied are provided based on the product manufacturer. The information contained in this specification sheet should not be considered a warranty, expressed or implied, including, but not limited to, a warranty of merchantability or fitness for a particular purpose. In no event shall LED Lights and Parts be liable for any incidental or consequential damages resulting from the use, misuse, or inability to use the product. This exclusion applies regardless of whether such damages are sought based on breach of warranty, breach of contract, negligence, strict liability in tort, or any other legal theory.

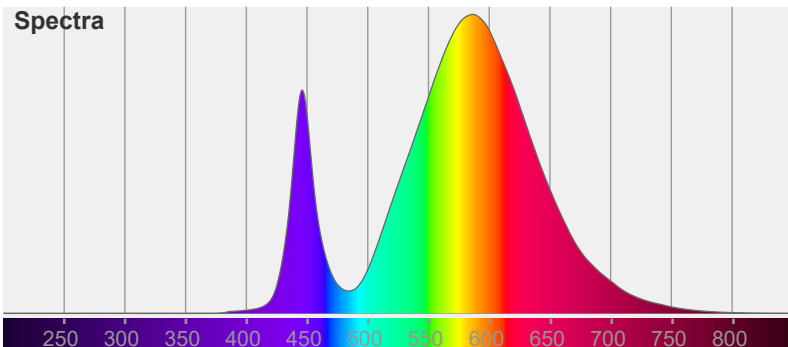


Color

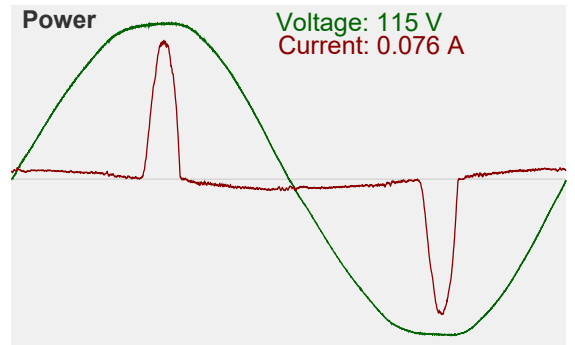


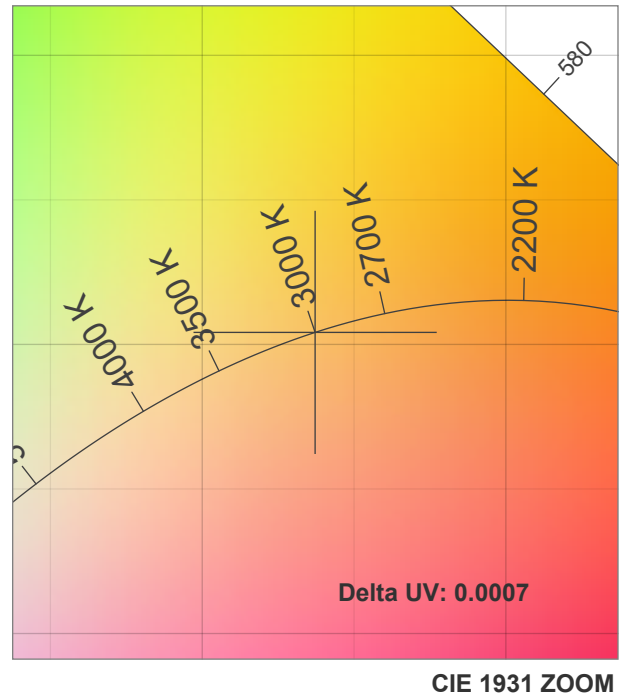
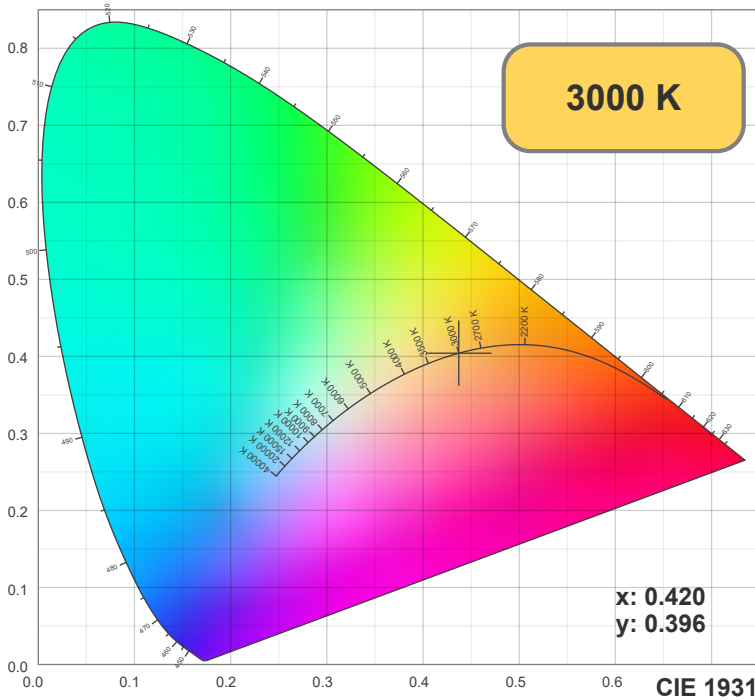
CIE1931
x: 0.420
y: 0.396

Spectra



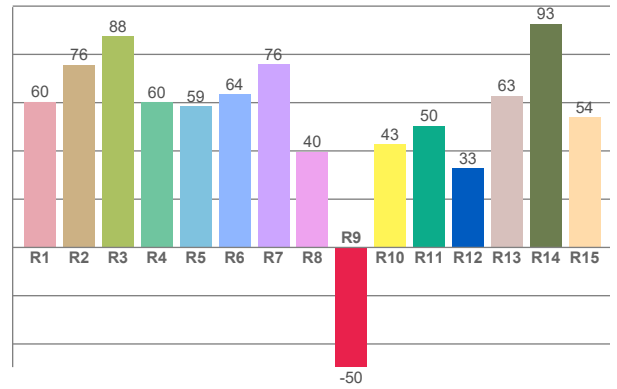
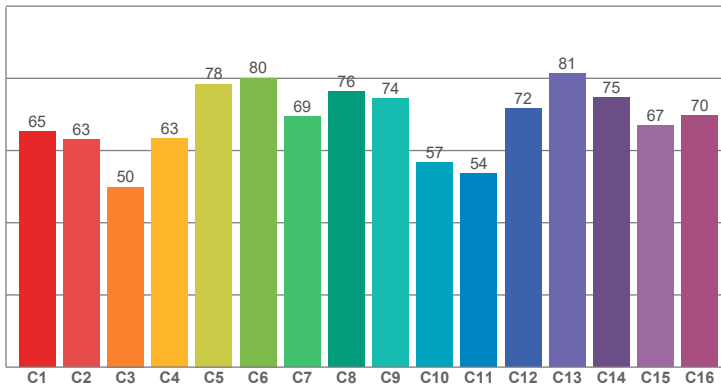
Power





TM30: 67.7

CRI: 65.2 (R1-R8)



CRI R values, only R1-R8 are used to calculate final CRI value

R	R1	R2	R3	R4	R5	R6	R7	R8	R9	R10	R11	R12	R13	R14	R15
Value	60.45	75.62	87.58	60.19	58.56	63.54	75.91	39.68	-49.60	42.72	50.46	32.86	62.74	92.76	53.96

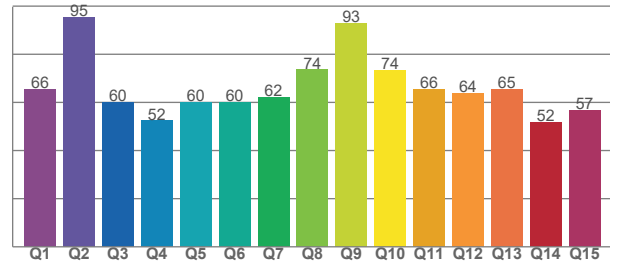
TM30 C values, 16 binned values out of total of 99 C values

C	C1	C2	C3	C4	C5	C6	C7	C8	C9	C10	C11	C12	C13	C14	C15	C16
Value	65.18	63.07	49.91	63.33	78.45	80.10	69.37	76.36	74.36	56.71	53.60	71.65	81.25	74.69	67.00	69.75

CQS Q values

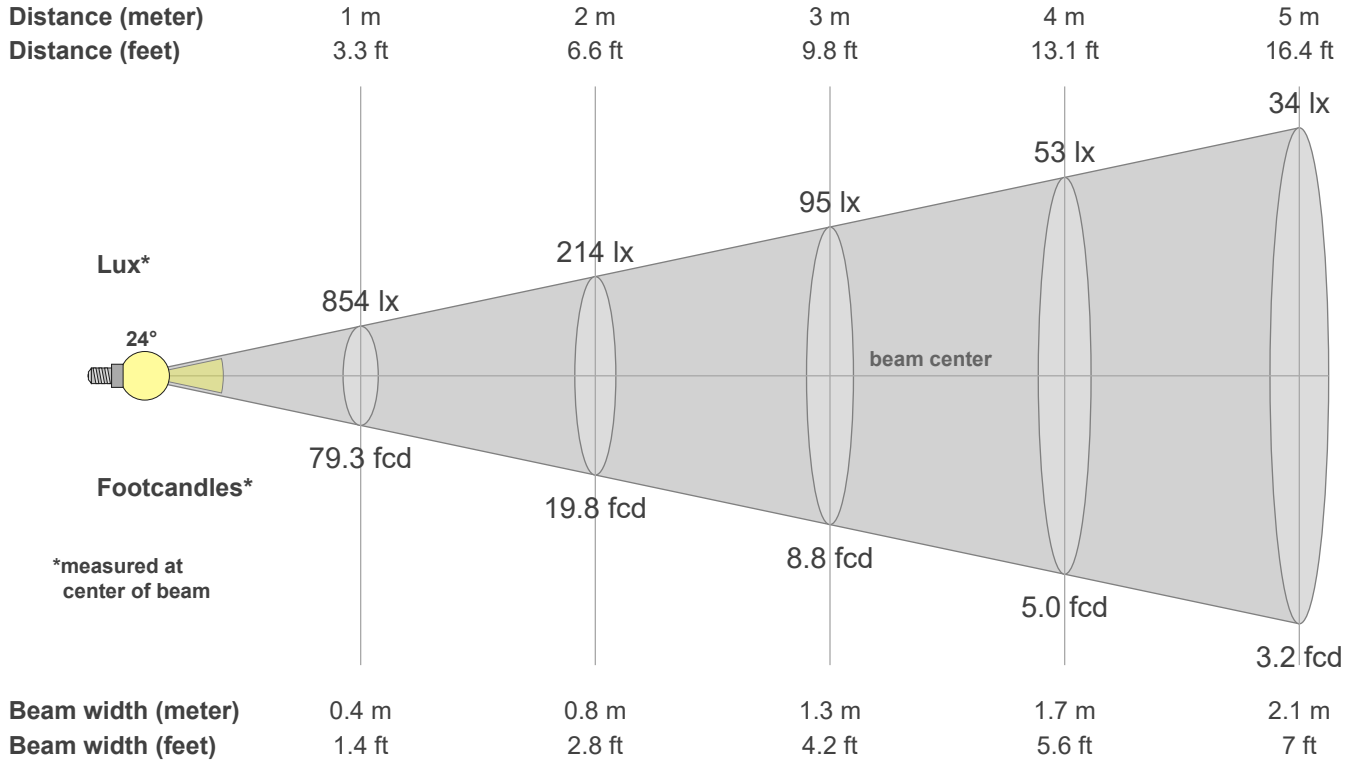
Q	Q1	Q2	Q3	Q4	Q5	Q6	Q7	Q8	Q9	Q10	Q11	Q12	Q13	Q14	Q15
Value	65.50	95.37	59.89	52.36	59.99	60.20	62.30	73.55	93.06	73.54	65.60	63.92	65.35	51.77	56.57

CQS: 64.3



Color parameters

CCT	CRI	CRI R9	TM30 Rf	TM30 Rg	CQS	x	y	u	v	Duv
3000 K	65.2	-49.6	67.7	93.1	64.3	0.4	0.4	0.3	0.3	-0.0007



Intensities in 0° c-plane

0°	2°	4°	6°	8°	10°	12°	14°	16°	18°	20°	22°	24°	26°	28°	30°	32°	34°	36°	38°
854	837	789	715	624	523	426	341	272	220	181	151	124	101	82	65	51	38	30	25
100%	98%	92%	84%	73%	61%	50%	40%	32%	26%	21%	18%	15%	12%	10%	8%	6%	4%	4%	3%

Intensities in 90° c-plane

0°	2°	4°	6°	8°	10°	12°	14°	16°	18°	20°	22°	24°	26°	28°	30°	32°	34°	36°	38°
854	837	789	715	624	523	426	341	272	220	181	151	124	101	82	65	51	38	30	25
100%	98%	92%	84%	73%	61%	50%	40%	32%	26%	21%	18%	15%	12%	10%	8%	6%	4%	4%	3%

Intensities in 180° c-plane

0°	2°	4°	6°	8°	10°	12°	14°	16°	18°	20°	22°	24°	26°	28°	30°	32°	34°	36°	38°
854	837	789	715	624	523	426	341	272	220	181	151	124	101	82	65	51	38	30	25
100%	98%	92%	84%	73%	61%	50%	40%	32%	26%	21%	18%	15%	12%	10%	8%	6%	4%	4%	3%

Intensities in 270° c-plane

0°	2°	4°	6°	8°	10°	12°	14°	16°	18°	20°	22°	24°	26°	28°	30°	32°	34°	36°	38°
854	837	789	715	624	523	426	341	272	220	181	151	124	101	82	65	51	38	30	25
100%	98%	92%	84%	73%	61%	50%	40%	32%	26%	21%	18%	15%	12%	10%	8%	6%	4%	4%	3%

Beam angle 50%	Field angle 10%	Cutoff angle 2.5%	Intensity ratio in 120° cone	Intensity ratio in 90° cone
24.0°	55.3°	79.4°	97.3%	92.5%