



LED WALL PACK LIGHT WITH PHOTOCELL 13W, 2700K (SOFT WHITE)



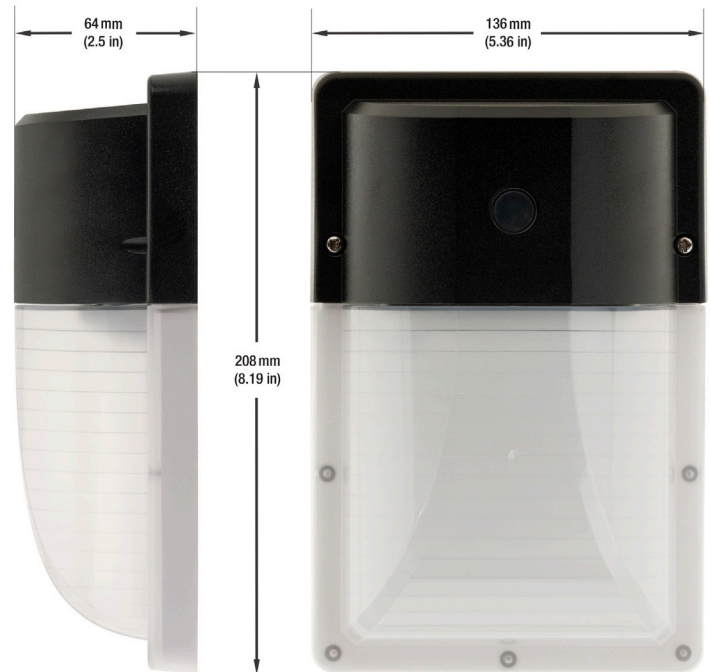
Specifications

Model No.:	ML-WPA-13W-227V-27K-P
Input Voltage:	100-277V AC
Wattage:	13W
Color Temperatures:	2700K (Soft White)
Brightness:	1100 Lumens
Beam Angel:	120°
IP Rating:	IP67 (Outdoor Rated)
Wire Size:	200mm (7.8") 18AWG
Dimensions:	Height: 208mm (8.19") Width: 136mm (5.36") Depth: 64mm (2.5")
Certification:	ETL



Features

- High-quality and energy-efficient lighting solution for various outdoor applications.
- Automatic on/off operation with dusk to dawn features, saving energy and ensuring reliability.
- Daylight color temperature of 2700K for bright and clear illumination.
- Wattage of 13W, providing a cost-effective option for outdoor lighting needs.
- Compact and durable design with ETL certification for high safety standards.
- Meets Canadian and United States standards with CSA certification, ensuring high quality and reliability for various outdoor applications.



Photocell Motion Sensor

Disclaimer

The data and information contained in this specification sheet are subject to change without notice; the ratings supplied are provided based on the product manufacturer. The information contained in this specification sheet should not be considered a warranty, expressed or implied, including, but not limited to, a warranty of merchantability or fitness for a particular purpose. In no event shall LED Lights and Parts be liable for any incidental or consequential damages resulting from the use, misuse, or inability to use the product. This exclusion applies regardless of whether such damages are sought based on breach of warranty, breach of contract, negligence, strict liability in tort, or any other legal theory.



LED Lights and Parts

WORLD OF LED LIGHTS

Light efficiency:

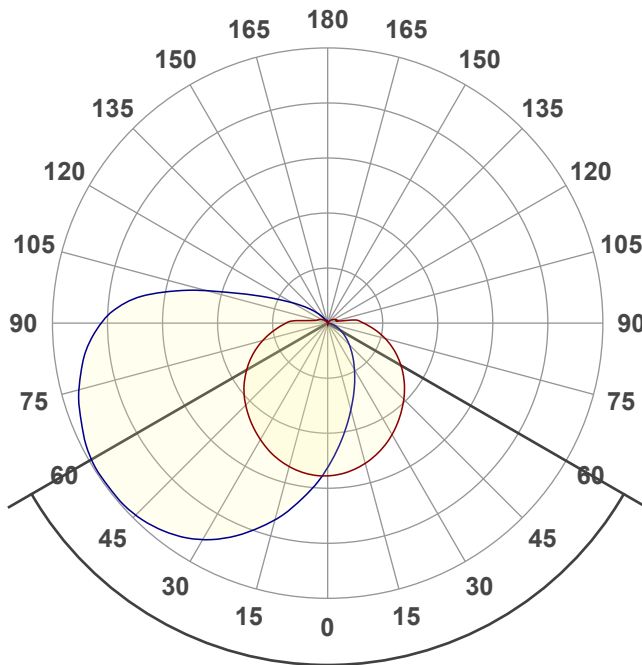
85 Lumen/Watt

Light quality:

CRI: 84.3

Color temperature:

2700 K



Beam angle

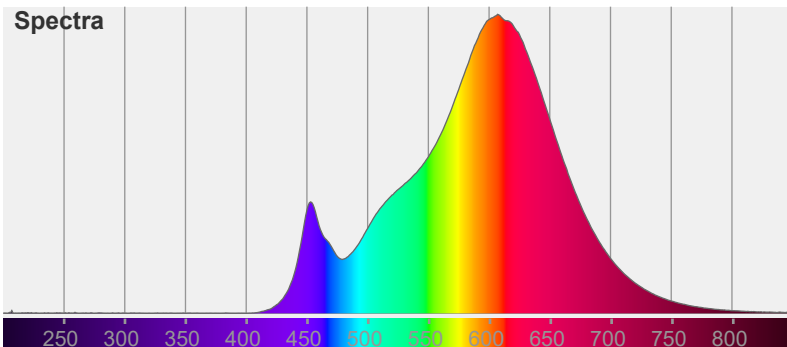
120°

Color



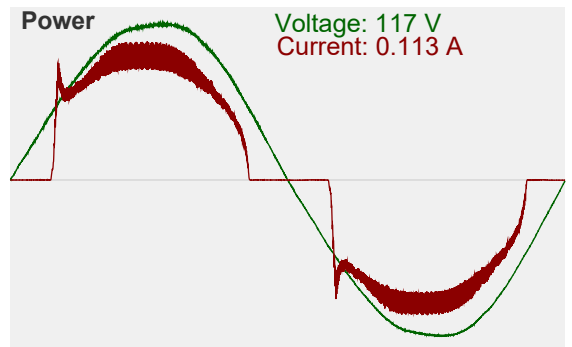
CIE1931
x: 0.459
y: 0.408

Spectra

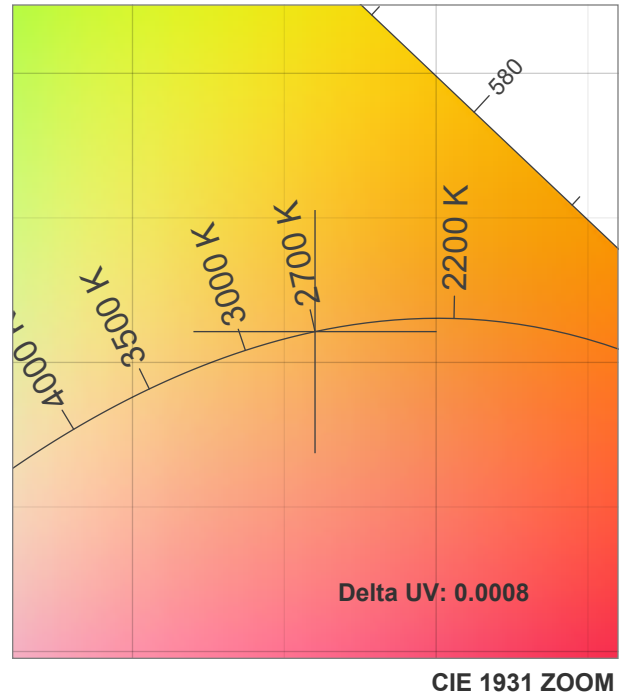
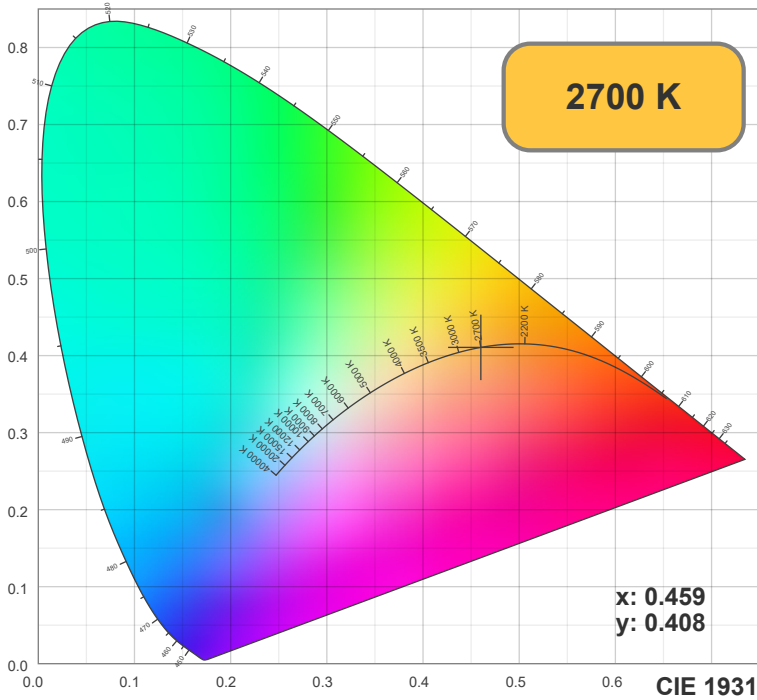


Power

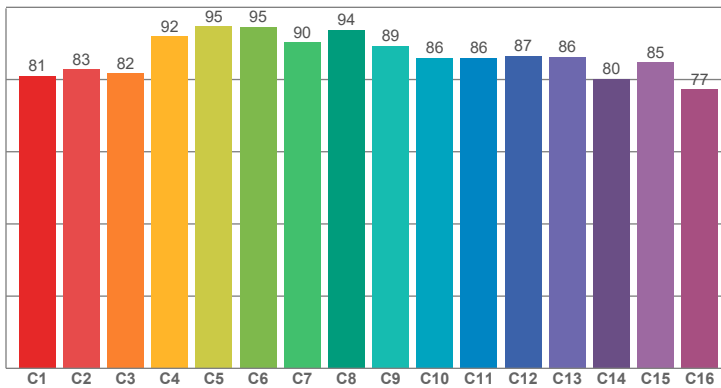
Voltage: 117 V
Current: 0.113 A



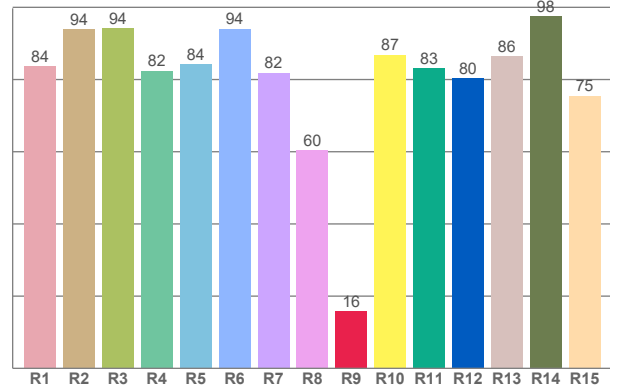
Light measurement was created using the Viso Systems - Light Inspector. www.visosystems.com



TM30: 86.5



CRI: 84.3 (R1-R8)



CRI R values, only R1-R8 are used to calculate final CRI value

R1	R2	R3	R4	R5	R6	R7	R8	R9	R10	R11	R12	R13	R14	R15
83.63	93.97	94.11	82.41	84.24	93.99	81.81	60.30	15.79	86.82	83.02	80.41	86.34	97.51	75.43

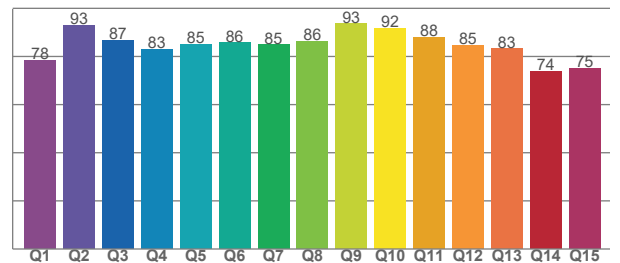
TM30 C values, 16 binned values out of total of 99 C values

C1	C2	C3	C4	C5	C6	C7	C8	C9	C10	C11	C12	C13	C14	C15	C16
81.04	82.88	81.73	91.97	94.68	94.63	90.37	93.75	89.38	85.97	86.01	86.61	86.28	80.16	84.77	77.29

CQS Q values

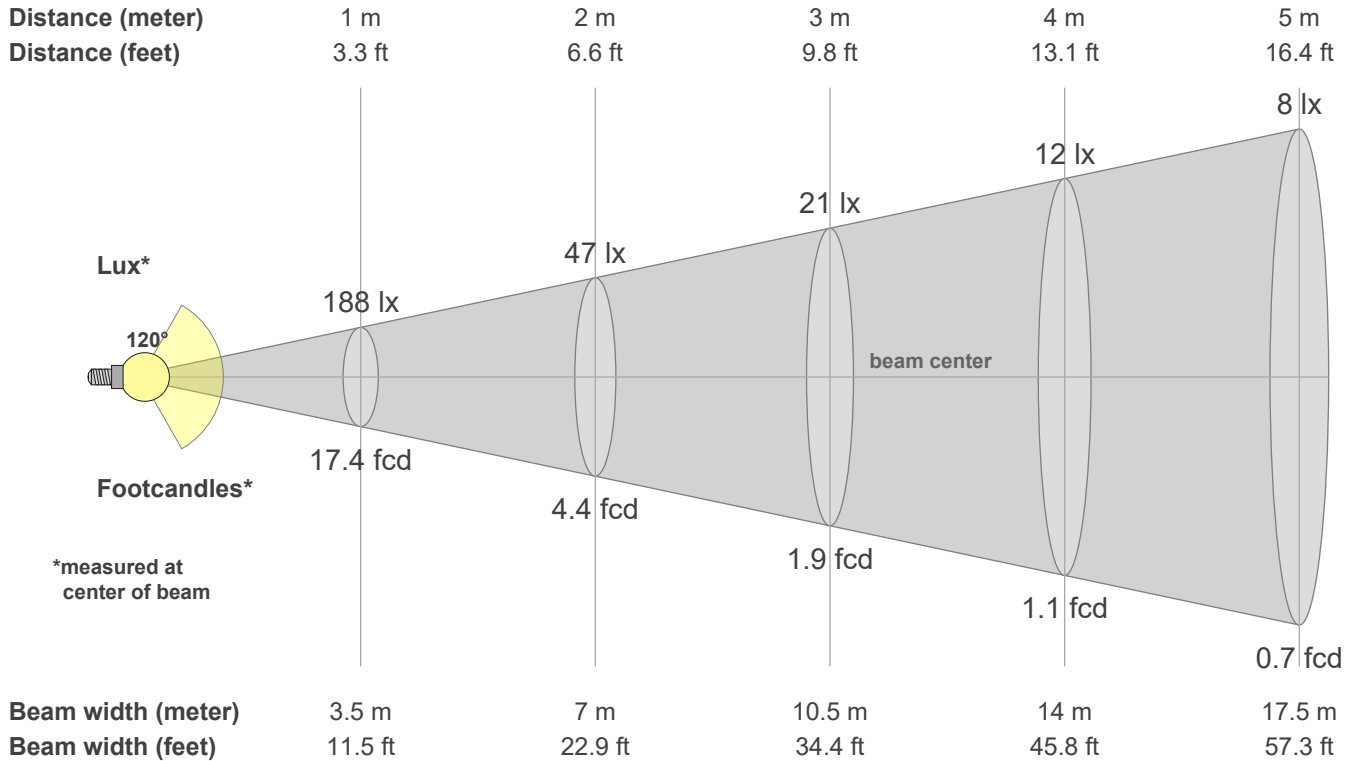
Q1	Q2	Q3	Q4	Q5	Q6	Q7	Q8	Q9	Q10	Q11	Q12	Q13	Q14	Q15
78.40	93.06	86.54	82.93	84.95	85.70	84.85	86.22	93.50	91.54	88.04	84.63	83.17	73.72	75.13

CQS: 83.7



Color parameters

CCT	CRI	CRI R9	TM30 Rf	TM30 Rg	CQS	x	y	u	v	Duv
2700 K	84.3	15.8	86.5	95.8	83.7	0.5	0.4	0.3	0.4	-0.0009



Intensities in 0° c-plane

0°	9°	18°	27°	36°	45°	54°	63°	72°	81°	90°	99°	108°	117°	126°	135°	144°	153°	162°	171°
188	189	180	168	152	136	119	101	82	63	46	24	12	10	7	5	3	2	1	1
100%	101%	96%	89%	81%	72%	63%	54%	44%	33%	24%	13%	7%	5%	4%	3%	1%	1%	1%	0%

Intensities in 90° c-plane

0°	9°	18°	27°	36°	45°	54°	63°	72°	81°	90°	99°	108°	117°	126°	135°	144°	153°	162°	171°
188	139	103	75	55	39	26	17	9	4	1	1	1	1	1	1	1	1	0	0
100%	74%	55%	40%	29%	21%	14%	9%	5%	2%	1%	0%	0%	0%	0%	0%	0%	0%	0%	0%

Intensities in 180° c-plane

0°	9°	18°	27°	36°	45°	54°	63°	72°	81°	90°	99°	108°	117°	126°	135°	144°	153°	162°	171°
188	192	185	174	161	146	130	112	92	71	52	21	13	10	7	4	2	2	1	0
100%	102%	99%	93%	86%	78%	69%	60%	49%	38%	28%	11%	7%	5%	4%	2%	1%	1%	0%	0%

Intensities in 270° c-plane

0°	9°	18°	27°	36°	45°	54°	63°	72°	81°	90°	99°	108°	117°	126°	135°	144°	153°	162°	171°
188	228	270	306	330	343	346	342	330	313	285	229	124	64	35	17	7	4	3	1
100%	121%	144%	163%	176%	183%	184%	182%	176%	167%	152%	122%	66%	34%	18%	9%	4%	2%	1%	1%

Beam angle 50%	Field angle 10%	Cutoff angle 2.5%	Intensity ratio in 120° cone	Intensity ratio in 90° cone
120.4°	187.1°	241.5°	48.3%	29.7%