



VERTICAL SINGLE GANG LED STEP LIGHT 100-240V, 2W, 3000K (WARM WHITE)

Specifications



| | |
|-------------------------------|---|
| Model: | RT05HV |
| Voltage: | 100-240V AC |
| Wattage: | 2W |
| Color Temperature: | 3000K (Warm White) |
| Beam Angle: | 80° |
| Cover Color: | Brushed Nickel |
| Available Cover Color: | Black - Brushed Nickel |
| Dimmable: | No |
| Rendering Index: | CRI>80 |
| IP Rating: | IP67 (Outdoor rated) |
| Dimensions (Gang Box): | Length: 72mm (2.8") Width: 47.6mm (1.87") Depth: 37.68mm (1.48") |
| Dimensions (Cover): | Length: 133mm (5.22") Width: 84mm (3.3") Depth: 11mm (0.43") |
| Certification: | ETL |



SKU#: 666561413125

Features

- The product can easily be installed in a single gang box, following a 120V connection.
- The engine of this light also is compatible with both Horizontal Louver Trims (Black/Brushed Nickel).
- The lights can be directly connected to the line without the need for any transformer having voltage 100-240V AC.
- This product can be used in wet locations with IP67 code.
- Contact us for assistance with any of our quality products if required.

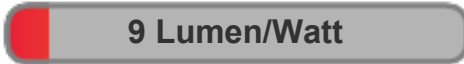


Disclaimer

The data and information contained in this specification sheet are subject to change without notice; the ratings supplied are provided based on the product manufacturer. The information contained in this specification sheet should not be considered a warranty, expressed or implied, including, but not limited to, a warranty of merchantability or fitness for a particular purpose. In no event shall LED Lights and Parts be liable for any incidental or consequential damages resulting from the use, misuse, or inability to use the product. This exclusion applies regardless of whether such damages are sought based on breach of warranty, breach of contract, negligence, strict liability in tort, or any other legal theory.



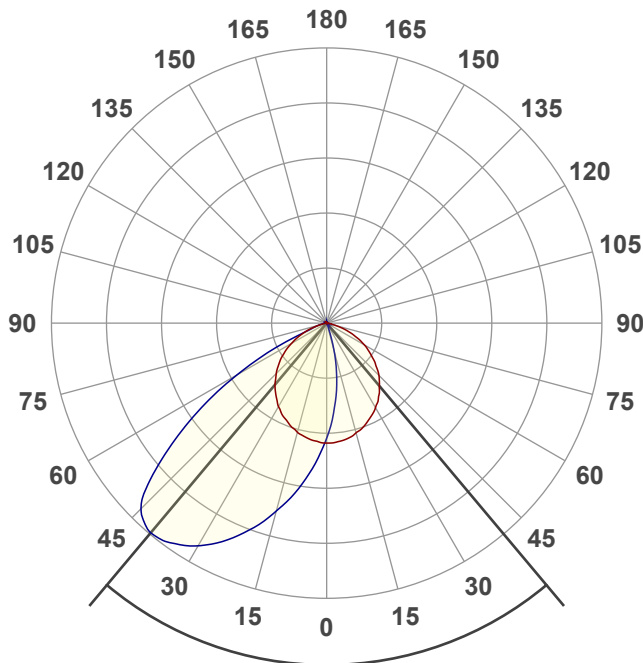
Light efficiency:



Light quality:



Color temperature:



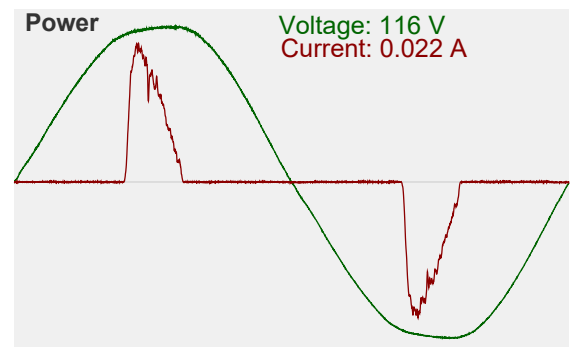
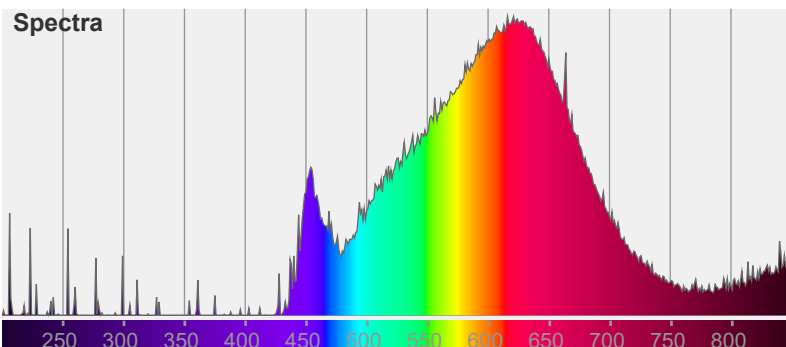
Beam angle

80°

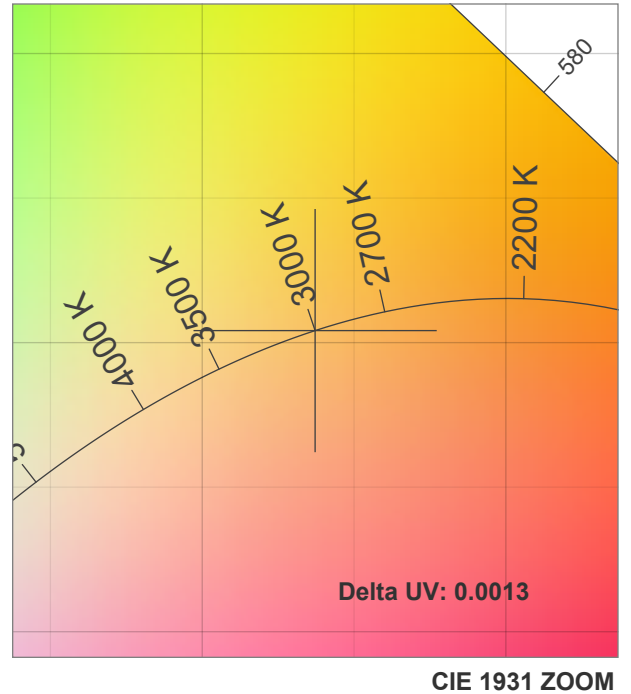
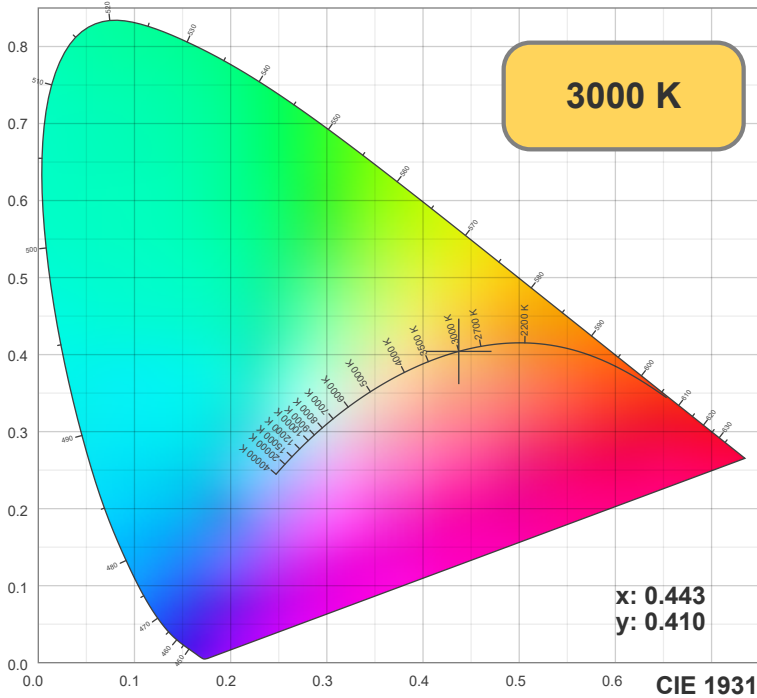
Color



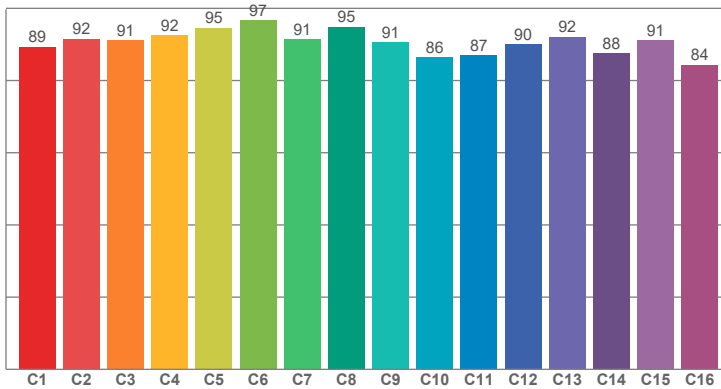
CIE1931
x: 0.443
y: 0.410



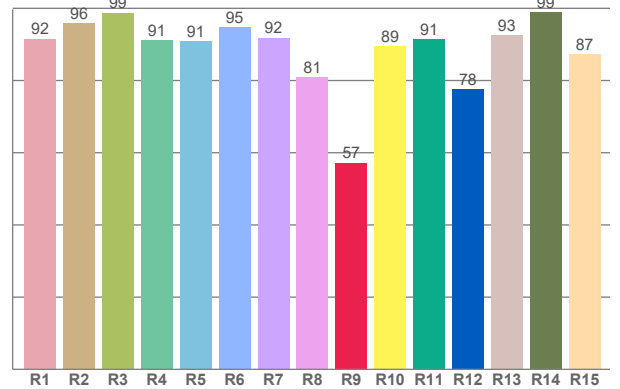
Light measurement was created using the Viso Systems - Light Inspector. www.visosystems.com



TM30: 90.6



CRI: 91.9 (R1-R8)



CRI R values, only R1-R8 are used to calculate final CRI value

| R1 | R2 | R3 | R4 | R5 | R6 | R7 | R8 | R9 | R10 | R11 | R12 | R13 | R14 | R15 |
|-------|-------|-------|-------|-------|-------|-------|-------|-------|-------|-------|-------|-------|-------|-------|
| 91.51 | 95.80 | 98.77 | 91.08 | 90.92 | 94.74 | 91.87 | 80.88 | 57.15 | 89.49 | 91.45 | 77.63 | 92.59 | 98.86 | 87.23 |

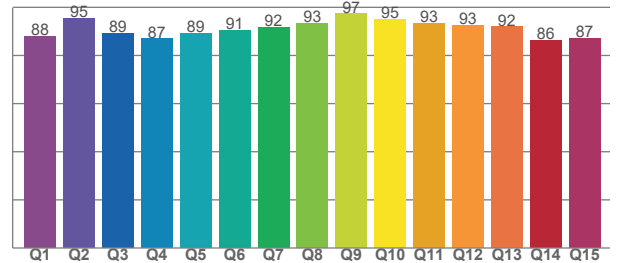
TM30 C values, 16 binned values out of total of 99 C values

| C1 | C2 | C3 | C4 | C5 | C6 | C7 | C8 | C9 | C10 | C11 | C12 | C13 | C14 | C15 | C16 |
|-------|-------|-------|-------|-------|-------|-------|-------|-------|-------|-------|-------|-------|-------|-------|-------|
| 89.31 | 91.53 | 91.15 | 92.50 | 94.54 | 96.71 | 91.44 | 94.81 | 90.57 | 86.39 | 87.04 | 90.09 | 92.06 | 87.55 | 91.14 | 84.32 |

CQS Q values

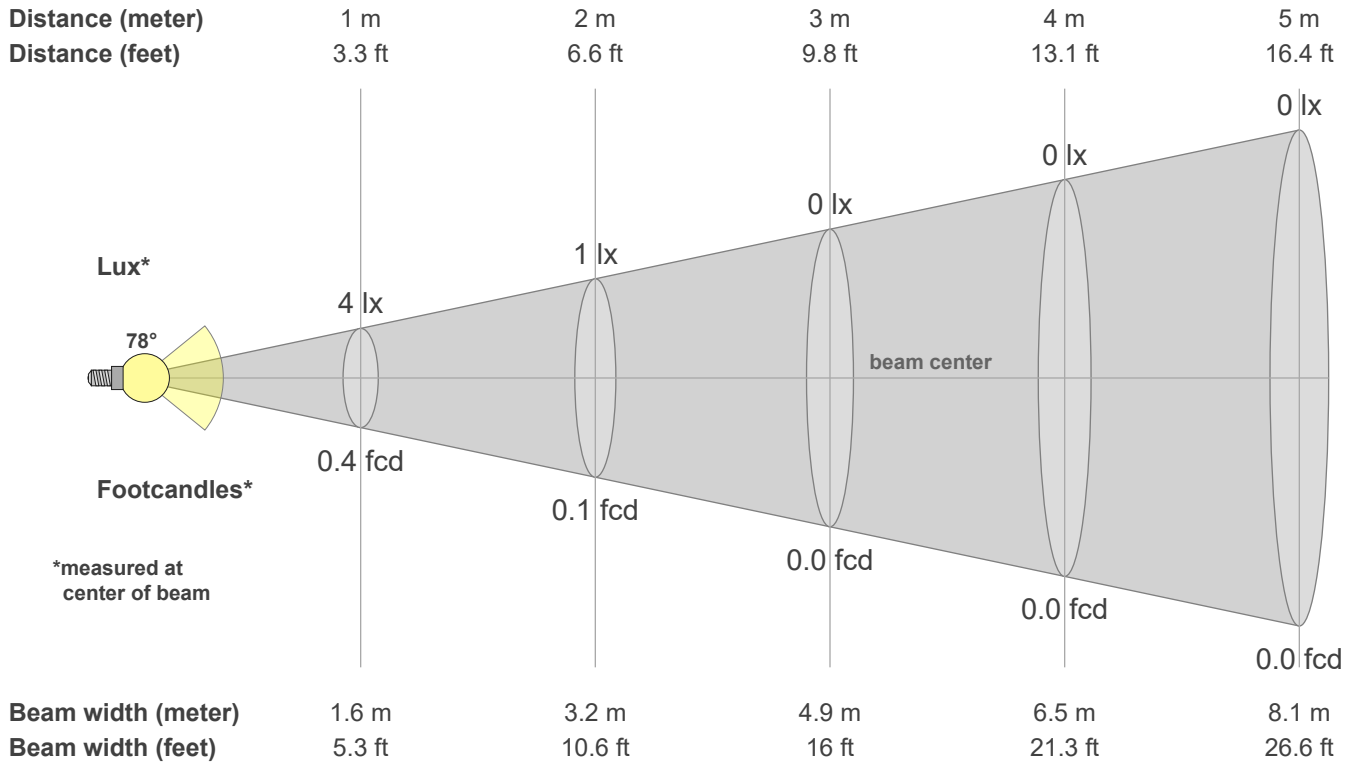
| Q1 | Q2 | Q3 | Q4 | Q5 | Q6 | Q7 | Q8 | Q9 | Q10 | Q11 | Q12 | Q13 | Q14 | Q15 |
|-------|-------|-------|-------|-------|-------|-------|-------|-------|-------|-------|-------|-------|-------|-------|
| 87.92 | 95.34 | 89.09 | 86.86 | 89.25 | 90.52 | 91.61 | 93.33 | 97.27 | 94.89 | 93.43 | 92.54 | 91.85 | 86.20 | 87.09 |

CQS: 90.4



Color parameters

| CCT | CRI | CRI R9 | TM30 Rf | TM30 Rg | CQS | x | y | u | v | Duv |
|--------|------|--------|---------|---------|------|-----|-----|-----|-----|--------|
| 3000 K | 91.9 | 57.2 | 90.6 | 97.1 | 90.4 | 0.4 | 0.4 | 0.3 | 0.3 | 0.0013 |



Intensities in 0° c-plane

| | | | | | | | | | | | | | | | | | | | |
|------|------|------|-----|-----|-----|-----|-----|-----|-----|-----|-----|-----|-----|-----|-----|-----|-----|-----|-----|
| 0° | 5° | 10° | 15° | 20° | 25° | 30° | 35° | 40° | 45° | 50° | 55° | 60° | 65° | 70° | 75° | 80° | 85° | 90° | 95° |
| 4.5 | 4.6 | 4.5 | 4.3 | 4.2 | 4.0 | 3.7 | 3.5 | 3.1 | 2.8 | 2.4 | 2.0 | 1.7 | 1.2 | 0.8 | 0.4 | 0.1 | 0.0 | 0.0 | 0.0 |
| 100% | 101% | 100% | 97% | 93% | 88% | 83% | 77% | 70% | 63% | 54% | 46% | 37% | 27% | 18% | 9% | 2% | 0% | 0% | 0% |

Intensities in 90° c-plane

| | | | | | | | | | | | | | | | | | | | |
|------|-----|-----|-----|-----|-----|-----|-----|-----|-----|-----|-----|-----|-----|-----|-----|-----|-----|-----|-----|
| 0° | 5° | 10° | 15° | 20° | 25° | 30° | 35° | 40° | 45° | 50° | 55° | 60° | 65° | 70° | 75° | 80° | 85° | 90° | 95° |
| 4.5 | 3.3 | 2.2 | 1.1 | 0.2 | 0.1 | 0.1 | 0.0 | 0.0 | 0.0 | 0.0 | 0.0 | 0.0 | 0.0 | 0.0 | 0.0 | 0.0 | 0.0 | 0.0 | 0.0 |
| 100% | 73% | 49% | 25% | 5% | 3% | 2% | 1% | 1% | 0% | 0% | 0% | 0% | 0% | 0% | 0% | 0% | 0% | 0% | 0% |

Intensities in 180° c-plane

| | | | | | | | | | | | | | | | | | | | |
|------|------|-----|-----|-----|-----|-----|-----|-----|-----|-----|-----|-----|-----|-----|-----|-----|-----|-----|-----|
| 0° | 5° | 10° | 15° | 20° | 25° | 30° | 35° | 40° | 45° | 50° | 55° | 60° | 65° | 70° | 75° | 80° | 85° | 90° | 95° |
| 4.5 | 4.5 | 4.4 | 4.3 | 4.1 | 3.9 | 3.7 | 3.4 | 3.1 | 2.7 | 2.4 | 2.0 | 1.6 | 1.1 | 0.7 | 0.3 | 0.1 | 0.0 | 0.0 | 0.0 |
| 100% | 101% | 99% | 96% | 92% | 87% | 82% | 75% | 68% | 61% | 53% | 44% | 35% | 25% | 16% | 7% | 1% | 0% | 0% | 0% |

Intensities in 270° c-plane

| | | | | | | | | | | | | | | | | | | | |
|------|------|------|------|------|------|------|------|------|------|------|------|-----|-----|-----|-----|-----|-----|-----|-----|
| 0° | 5° | 10° | 15° | 20° | 25° | 30° | 35° | 40° | 45° | 50° | 55° | 60° | 65° | 70° | 75° | 80° | 85° | 90° | 95° |
| 4.5 | 5.5 | 6.5 | 7.4 | 8.4 | 9.2 | 9.8 | 10.3 | 10.4 | 10.0 | 8.4 | 6.2 | 4.0 | 1.9 | 0.6 | 0.3 | 0.1 | 0.0 | 0.0 | 0.0 |
| 100% | 122% | 144% | 166% | 186% | 204% | 219% | 229% | 233% | 223% | 186% | 138% | 88% | 42% | 13% | 7% | 3% | 1% | 0% | 0% |

| | | | | |
|-----------------------|------------------------|--------------------------|-------------------------------------|------------------------------------|
| Beam angle 50% | Field angle 10% | Cutoff angle 2.5% | Intensity ratio in 120° cone | Intensity ratio in 90° cone |
| 78.1° | 114.8° | 127.0° | 88.5% | 59.8% |