



RD12S-1W

SURFACE MOUNT MARINE GRADE LED SPOTLIGHT 12V 1W 2700K (SOFT WHITE)

Specifications



Model No.:	RD12S-1W
Input Voltage:	12V DC
Wattage:	1W
LED Type:	1 x COB LED
Color Temperatures:	2700K (Soft White), 5000K (Daylight)
Dimmable:	Yes
Brightness:	110 Lumens
Beam Angle:	45°
Material:	Die-Casting Aluminum
Rendering Index:	CRI>80
IP Rating:	IP65 (Suitable for wet locations)
Installation:	Surface Mount
Wire Length:	30 cm (11.8 in) 20AWG
Dimensions:	Height: 29 mm (1.14 in) Base Diameter: Ø 40 mm (1.56 in) Body Diameter: Ø 30 mm (1.2 in)
Certification:	ETL



2700K (Soft White)

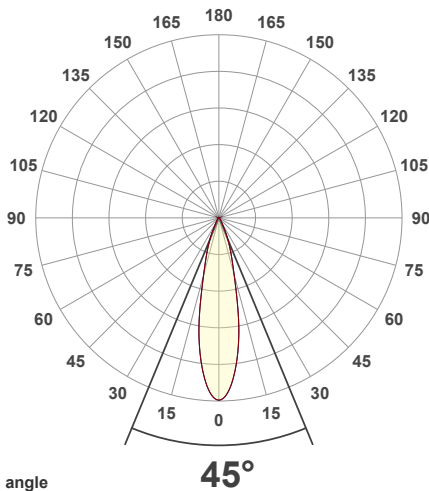
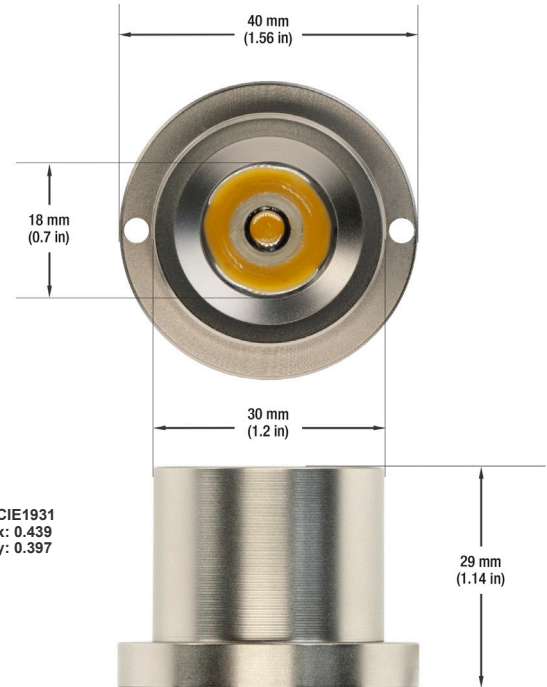
5000K (Daylight)

SKU: 666561413057

SKU: 666561413040

Features

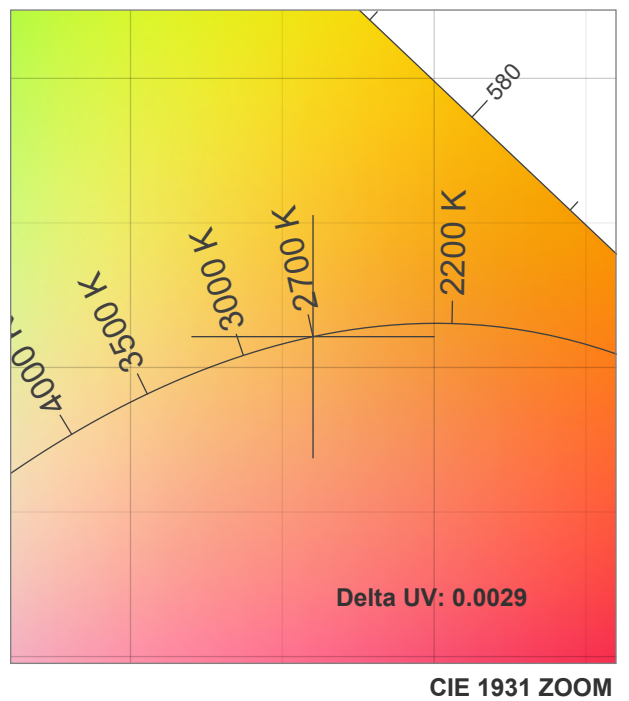
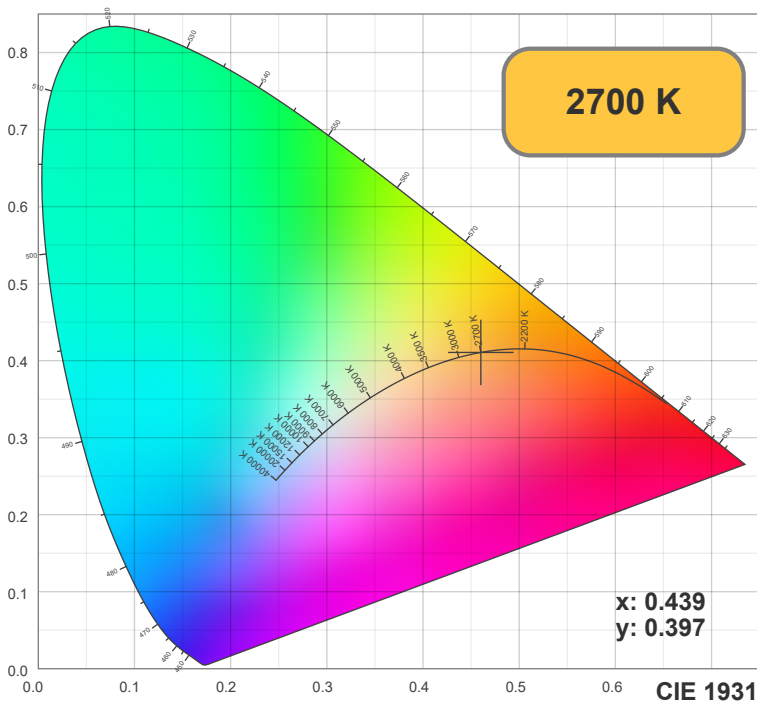
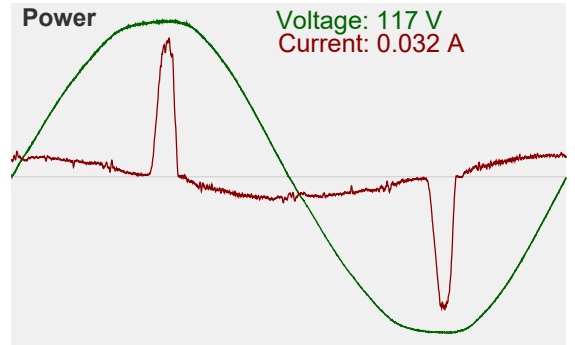
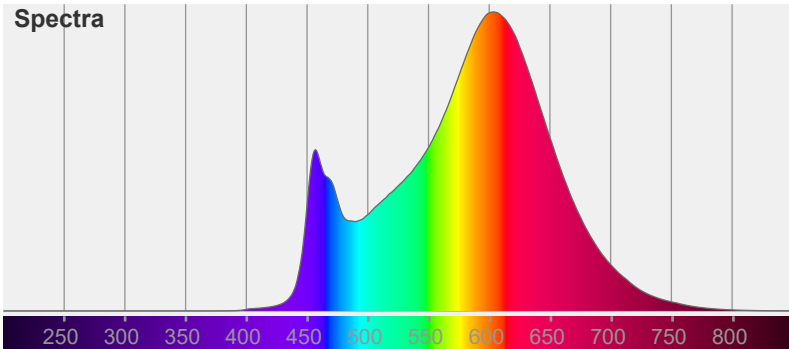
- Aluminum housing, well heat dissipation, long life-span, and low light decay.
- Low power consumption, high energy efficiency.
- Widely applicable in wardrobe, cabinet, shelves of a modern kitchen, patio, outdoor spaces, etc.
- Is a waterproof light, having an IP65 rating.
- Applicable for both indoor and outdoor applications
- We offer a step-down transformer to line voltage in both hardwire and plugin.
- Can be directly screwed onto the surface, comes along with the screws.
- We offer a step-down transformer to line voltage in both hardwire and plugin.
- Dimmer control must have the same input rating as the dimmable power supply driver it connects to. Other low voltage dimmers are also compatible.
- Comes with 1 foot of wire AWG 20.
- Contact us for assistance with any of our quality products if required.
- Shipment available, depending upon the location.



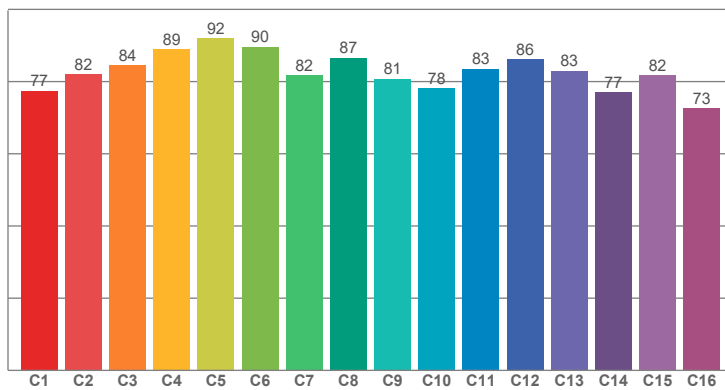
CIE1931
x: 0.439
y: 0.397

Disclaimer

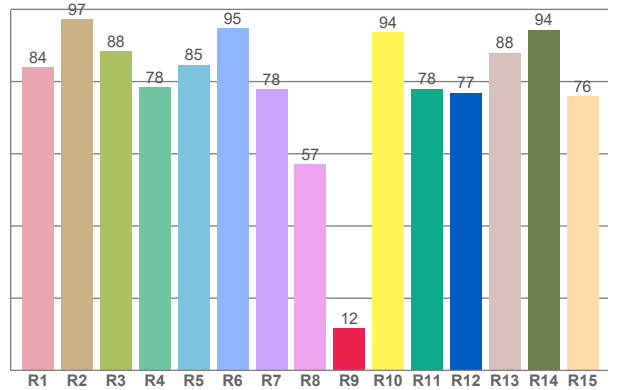
The data and information contained in this specification sheet are subject to change without notice; the ratings supplied are provided based on the product manufacturer. The information contained in this specification sheet should not be considered a warranty, expressed or implied, including, but not limited to, a warranty of merchantability or fitness for a particular purpose. In no event shall LED Lights and Parts be liable for any incidental or consequential damages resulting from the use, misuse, or inability to use the product. This exclusion applies regardless of whether such damages are sought based on breach of warranty, breach of contract, negligence, strict liability in tort, or any other legal theory.



TM30: 83.0



CRI: 82.8 (R1-R8)





CRI R values, only R1-R8 are used to calculate final CRI value

R1	R2	R3	R4	R5	R6	R7	R8	R9	R10	R11	R12	R13	R14	R15
83.95	97.22	88.35	78.42	84.64	94.69	77.79	57.13	11.58	93.64	78.00	76.93	87.95	94.28	75.95

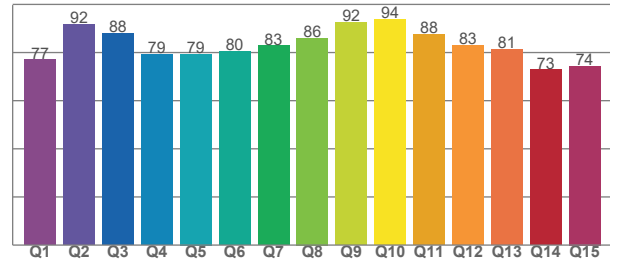
TM30 C values, 16 binned values out of total of 99 C values

C1	C2	C3	C4	C5	C6	C7	C8	C9	C10	C11	C12	C13	C14	C15	C16
77.43	82.01	84.42	88.88	92.01	89.64	81.73	86.59	80.74	78.08	83.49	86.09	82.98	77.02	81.76	72.60

CQS Q values

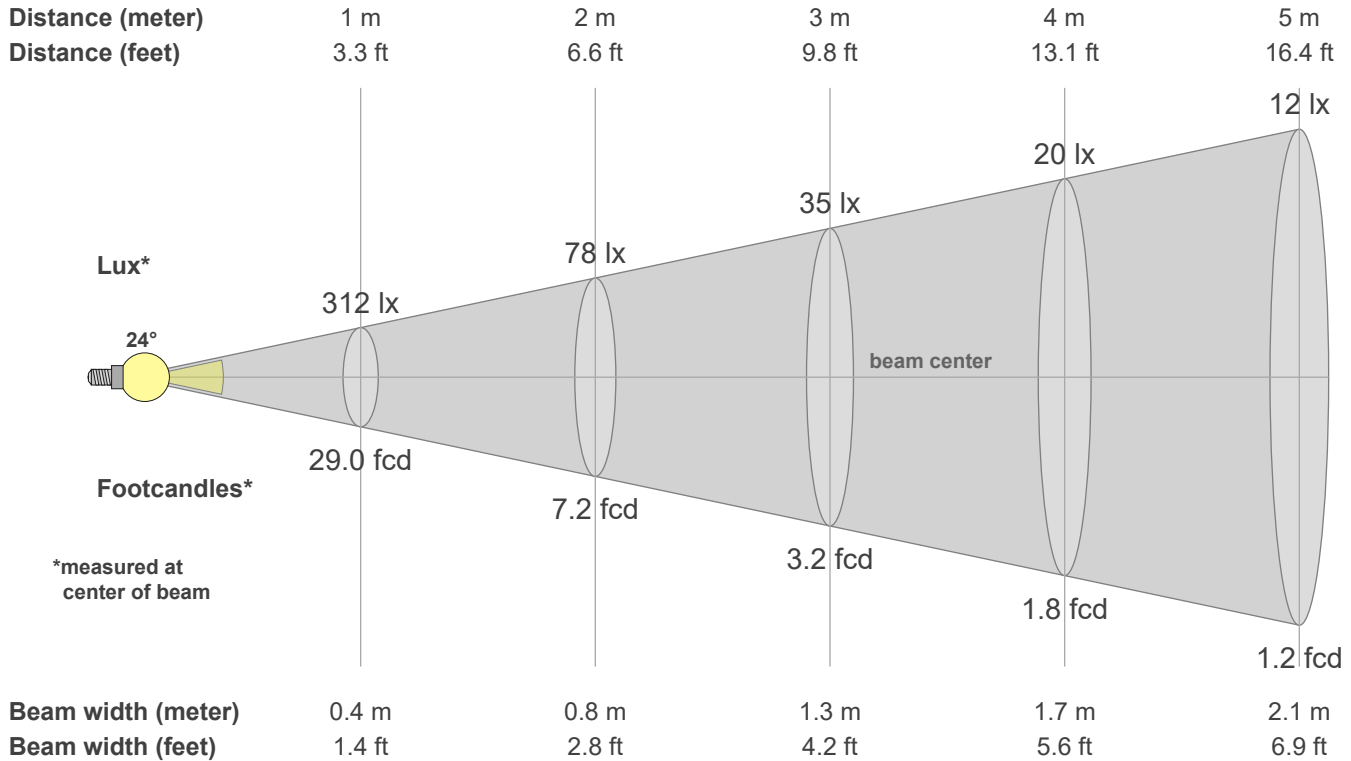
Q1	Q2	Q3	Q4	Q5	Q6	Q7	Q8	Q9	Q10	Q11	Q12	Q13	Q14	Q15
77.01	91.79	87.84	79.35	79.38	80.46	82.79	86.06	92.42	93.72	87.65	83.03	81.27	72.83	74.44

CQS: 82.1



Color parameters

CCT	CRI	CRI R9	TM30 Rf	TM30 Rg	CQS	x	y	u	v	Duv
2700 K	82.8	11.6	83.0	91.7	82.1	0.5	0.4	0.3	0.4	-0.0029





Intensities in 0° c-plane

0°	2°	4°	6°	8°	10°	12°	14°	16°	18°	20°	22°	24°	26°	28°	30°	32°	34°	36°	38°
312	306	289	264	233	197	155	116	89	70	56	43	32	22	15	11	9	7	6	5
100%	98%	93%	84%	75%	63%	50%	37%	29%	23%	18%	14%	10%	7%	5%	4%	3%	2%	2%	2%

Intensities in 90° c-plane

0°	2°	4°	6°	8°	10°	12°	14°	16°	18°	20°	22°	24°	26°	28°	30°	32°	34°	36°	38°
312	306	289	264	233	197	155	116	89	70	56	43	32	22	15	11	9	7	6	5
100%	98%	93%	84%	75%	63%	50%	37%	29%	23%	18%	14%	10%	7%	5%	4%	3%	2%	2%	2%

Intensities in 180° c-plane

0°	2°	4°	6°	8°	10°	12°	14°	16°	18°	20°	22°	24°	26°	28°	30°	32°	34°	36°	38°
312	306	289	264	233	197	155	116	89	70	56	43	32	22	15	11	9	7	6	5
100%	98%	93%	84%	75%	63%	50%	37%	29%	23%	18%	14%	10%	7%	5%	4%	3%	2%	2%	2%

Intensities in 270° c-plane

0°	2°	4°	6°	8°	10°	12°	14°	16°	18°	20°	22°	24°	26°	28°	30°	32°	34°	36°	38°
312	306	289	264	233	197	155	116	89	70	56	43	32	22	15	11	9	7	6	5
100%	98%	93%	84%	75%	63%	50%	37%	29%	23%	18%	14%	10%	7%	5%	4%	3%	2%	2%	2%

Beam angle 50%	Field angle 10%	Cutoff angle 2.5%	Intensity ratio in 120° cone	Intensity ratio in 90° cone
23.9°	48.2°	65.9°	98.3%	95.0%