



4" DIMMABLE LED PANEL LIGHT 120V, 9W, 3000K (WARM WHITE)

Specifications



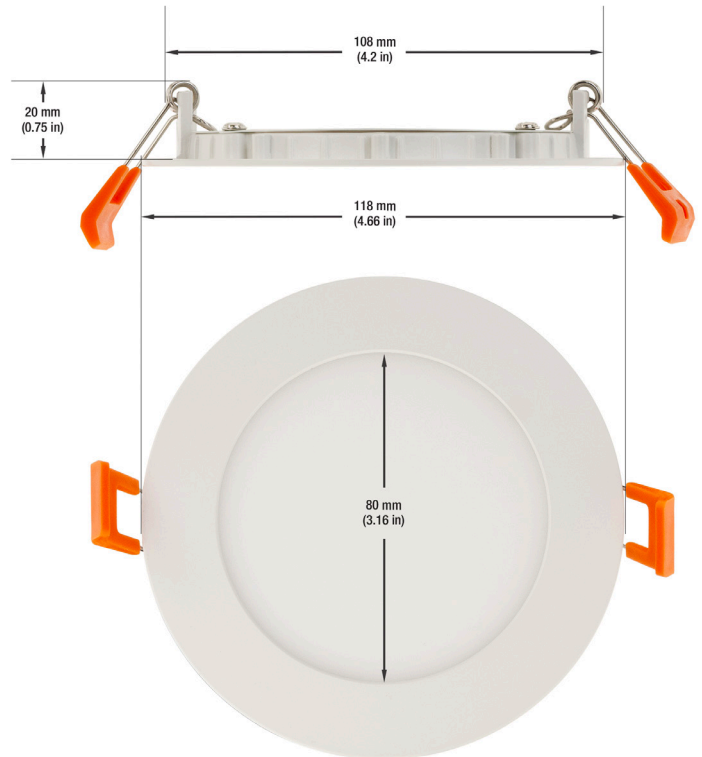
Model No.:	LED-PDL-120-9W
Input Voltage:	120V
Wattage:	9W
Color Temperatures:	3000K (Warm White)
Beam Angel:	120°
Brightness:	650Lm
IP Rating:	IP20 (Suitable for Damp Locations)
Dimmable:	Yes
Wire Size:	250mm (9.8") 22AWG
Dimensions:	Diameter: 118mm (4.66") Depth: 20mm (0.75") Cut Size: 108mm (4.2")
Dimensions (Driver):	Length: 88mm (3.4") Width: 75mm (2.9") Depth: 32mm (1.2")
Certification:	ETL



SKU#: 666561411060

Features

- The 4" Dimmable Recessed LED Panel Light/Downlight/Ceiling Light is designed for residential and commercial use.
- It operates on a voltage of 120V and has a wattage of 9W, making it energy-efficient.
- The color temperature of 3000K (Warm White).
- The 4" Dimmable Recessed LED Panel Light/Downlight/Ceiling Light is ETL certified, ensuring that it has been tested and certified to meet safety standards.
- It is an eco-friendly and long-lasting lighting solution, making it a great choice for anyone looking to reduce their energy consumption and environmental impact.



Disclaimer

The data and information contained in this specification sheet are subject to change without notice; the ratings supplied are provided based on the product manufacturer. The information contained in this specification sheet should not be considered a warranty, expressed or implied, including, but not limited to, a warranty of merchantability or fitness for a particular purpose. In no event shall LED Lights and Parts be liable for any incidental or consequential damages resulting from the use, misuse, or inability to use the product. This exclusion applies regardless of whether such damages are sought based on breach of warranty, breach of contract, negligence, strict liability in tort, or any other legal theory.



LED Lights and Parts

WORLD OF LED LIGHTS

Light efficiency:

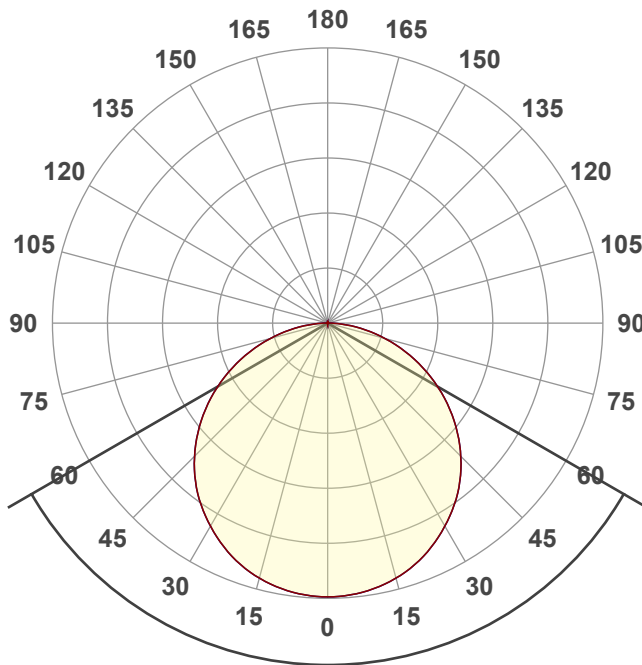
64 Lumen/Watt

Light quality:

CRI: 81.6

Color temperature:

3000 K



Beam angle

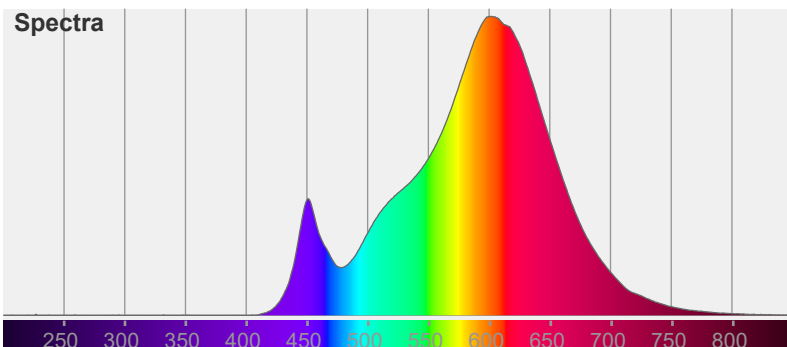
120°

Color



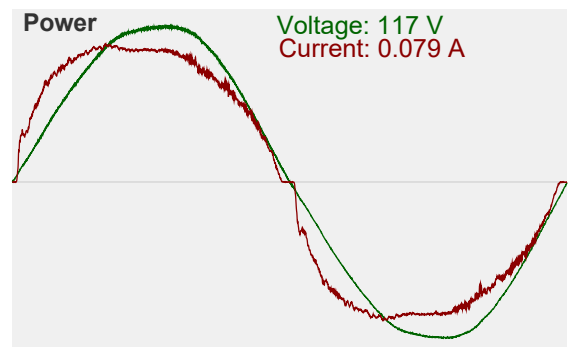
CIE1931
x: 0.456
y: 0.407

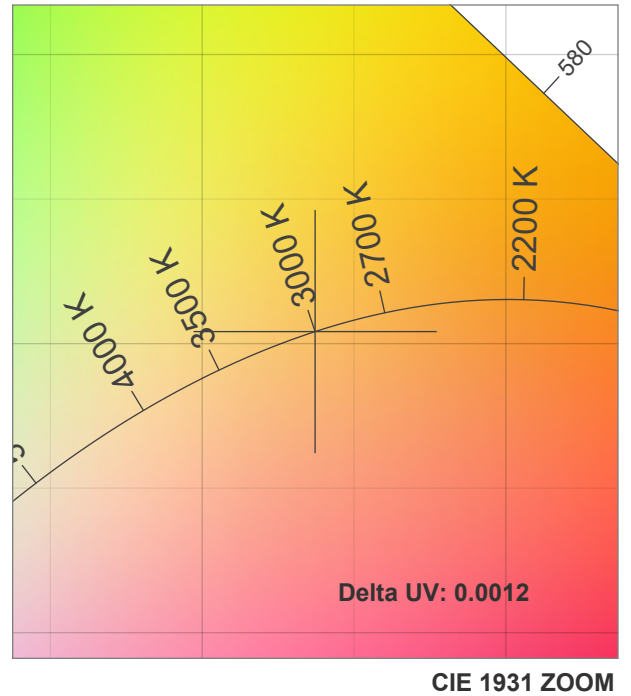
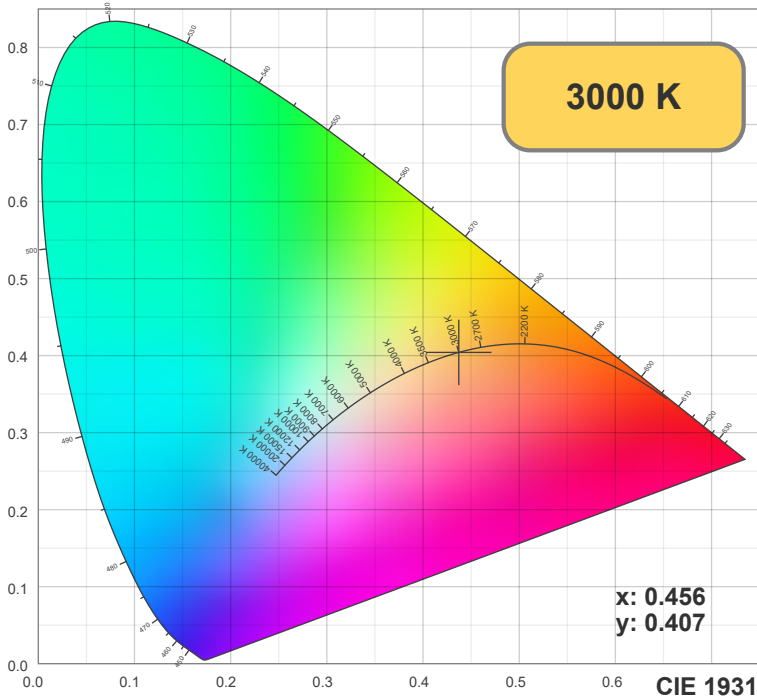
Spectra



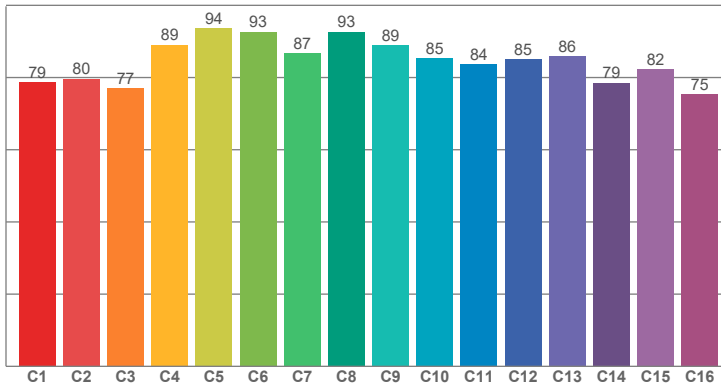
Power

Voltage: 117 V
Current: 0.079 A

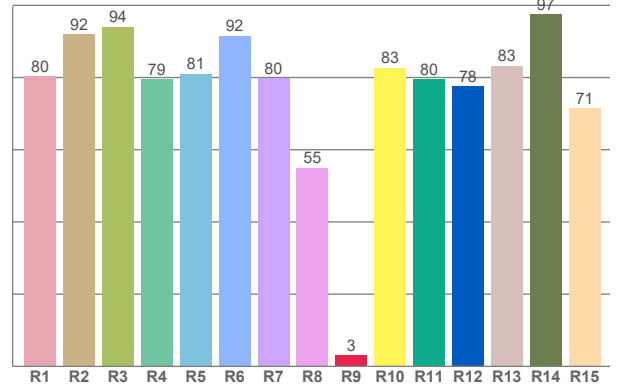




TM30: 84.5



CRI: 81.6 (R1-R8)



CRI R values, only R1-R8 are used to calculate final CRI value

R1	R2	R3	R4	R5	R6	R7	R8	R9	R10	R11	R12	R13	R14	R15
80.37	92.02	94.06	79.42	80.98	91.54	79.84	54.94	3.12	82.68	79.52	77.52	83.28	97.44	71.49

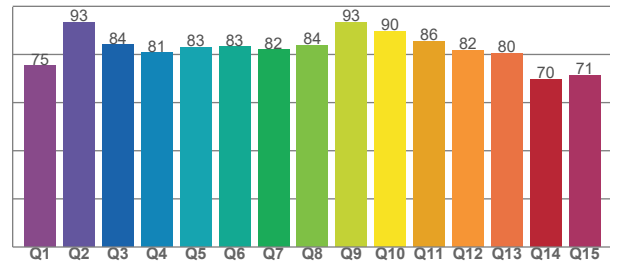
TM30 C values, 16 binned values out of total of 99 C values

C1	C2	C3	C4	C5	C6	C7	C8	C9	C10	C11	C12	C13	C14	C15	C16
78.61	79.67	76.97	89.02	93.59	92.61	86.70	92.67	88.95	85.38	83.71	85.10	85.79	78.56	82.19	75.37

CQS Q values

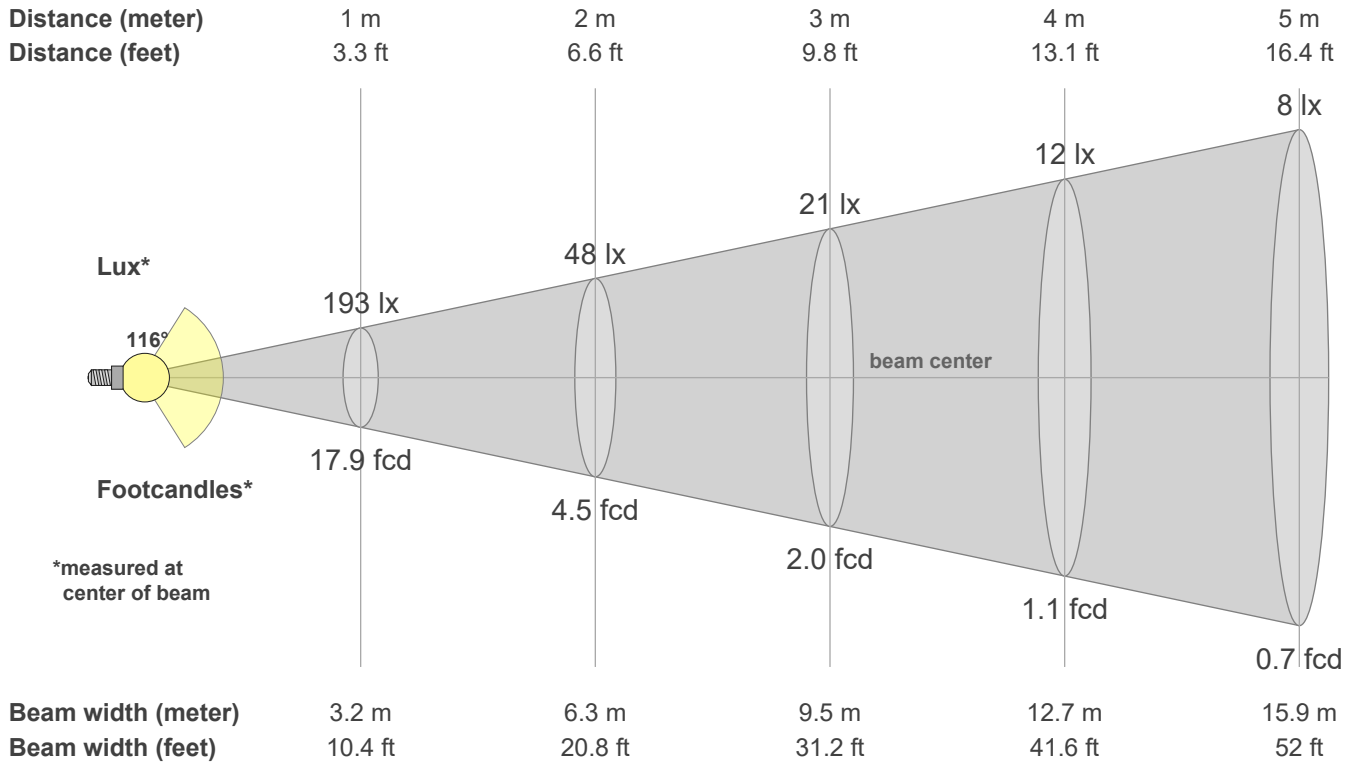
Q1	Q2	Q3	Q4	Q5	Q6	Q7	Q8	Q9	Q10	Q11	Q12	Q13	Q14	Q15
75.26	93.45	84.01	80.65	82.93	83.13	81.93	83.79	93.29	89.52	85.52	81.74	80.43	69.79	71.38

CQS: 81.1



Color parameters

CCT	CRI	CRI R9	TM30 Rf	TM30 Rg	CQS	x	y	u	v	Duv
3000 K	81.6	3.1	84.5	95.9	81.1	0.4	0.4	0.3	0.3	-0.0012



Intensities in 0° c-plane

0°	5°	10°	15°	20°	25°	30°	35°	40°	45°	50°	55°	60°	65°	70°	75°	80°	85°	90°	95°
193	192	190	186	181	173	165	156	145	133	119	105	89	74	58	42	27	13	4	0
100%	100%	98%	96%	94%	90%	86%	81%	75%	69%	62%	54%	46%	38%	30%	22%	14%	7%	2%	0%

Intensities in 90° c-plane

0°	5°	10°	15°	20°	25°	30°	35°	40°	45°	50°	55°	60°	65°	70°	75°	80°	85°	90°	95°
193	192	190	186	181	173	165	156	145	133	119	105	89	74	58	42	27	13	4	0
100%	100%	98%	96%	94%	90%	86%	81%	75%	69%	62%	54%	46%	38%	30%	22%	14%	7%	2%	0%

Intensities in 180° c-plane

0°	5°	10°	15°	20°	25°	30°	35°	40°	45°	50°	55°	60°	65°	70°	75°	80°	85°	90°	95°
193	192	190	186	181	173	165	156	145	133	119	105	89	74	58	42	27	13	4	0
100%	100%	98%	96%	94%	90%	86%	81%	75%	69%	62%	54%	46%	38%	30%	22%	14%	7%	2%	0%

Intensities in 270° c-plane

0°	5°	10°	15°	20°	25°	30°	35°	40°	45°	50°	55°	60°	65°	70°	75°	80°	85°	90°	95°
193	192	190	186	181	173	165	156	145	133	119	105	89	74	58	42	27	13	4	0
100%	100%	98%	96%	94%	90%	86%	81%	75%	69%	62%	54%	46%	38%	30%	22%	14%	7%	2%	0%

Beam angle 50%	Field angle 10%	Cutoff angle 2.5%	Intensity ratio in 120° cone	Intensity ratio in 90° cone
115.5°	165.3°	178.3°	77.0%	51.9%