



14" ROUND RECESSED LED DOWNLIGHT 120V, 18W, 3000K (WARM WHITE)

Specifications



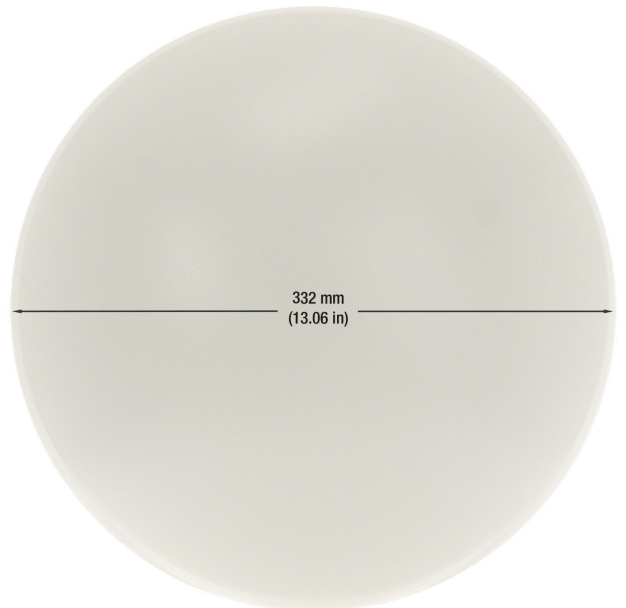
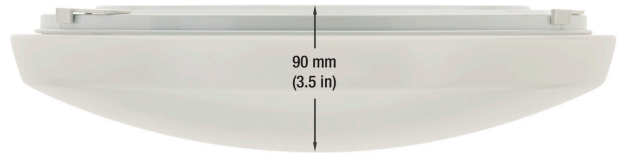
Model No.:	LT-US-C1418W308-02
Input Voltage:	120V AC
Wattage:	18W
Color Temperature:	3000K (Warm White)
Material:	Aluminum
Beam Angle:	120°
Dimmable:	Yes
IP rating:	IP20 (Indoor rated)
Dimensions:	Diameter: 332mm (13.06") Depth: 90mm (3.5")
Wire Size:	220mm (8.6") 18AWG
Certification:	UL



SKU: 666561407025

Features

- Operates on 120V AC with a wattage of 18.
- Emits a warm white light with a color temperature of 3000K and a luminous flux of 1440Lm.
- The light has a rendering index of 80 and is UL certified, making it suitable for damp locations.
- Mercury-free and emits no UV or IR radiation, making it an environmentally friendly choice.
- Instant start and produces gentle light with no shadow or flickering, and is eye-protective.
- Highly efficient, consuming low power and saving energy cost ETL.



Disclaimer

The data and information contained in this specification sheet are subject to change without notice; the ratings supplied are provided based on the product manufacturer. The information contained in this specification sheet should not be considered a warranty, expressed or implied, including, but not limited to, a warranty of merchantability or fitness for a particular purpose. In no event shall LED Lights and Parts be liable for any incidental or consequential damages resulting from the use, misuse, or inability to use the product. This exclusion applies regardless of whether such damages are sought based on breach of warranty, breach of contract, negligence, strict liability in tort, or any other legal theory.



LED Lights and Parts

WORLD OF LED LIGHTS

Light efficiency:

55 Lumen/Watt

Light quality:

CRI: 84.8

Color temperature:

3000 K

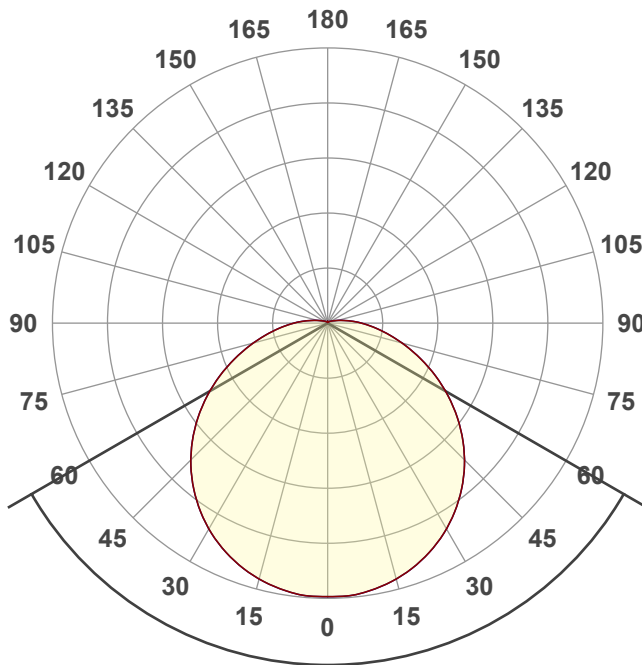
Output: 978 lm

Peak: 284 cd

Power: 17.7 W

PF: 1.00

2 PLANES



Beam angle

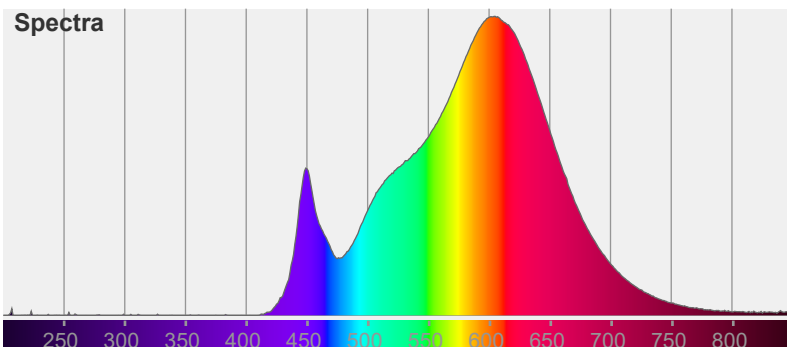
120°

Color



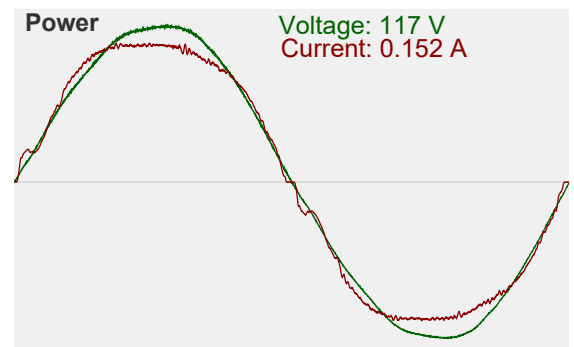
CIE1931
x: 0.440
y: 0.407

Spectra

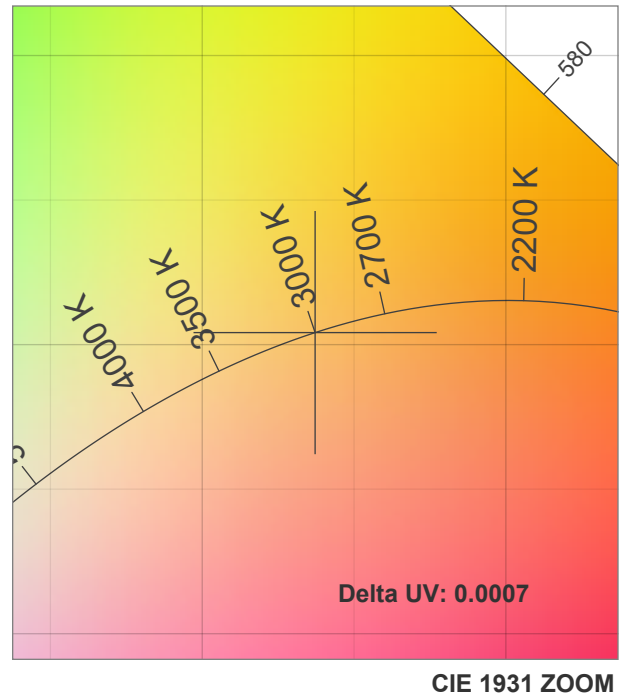
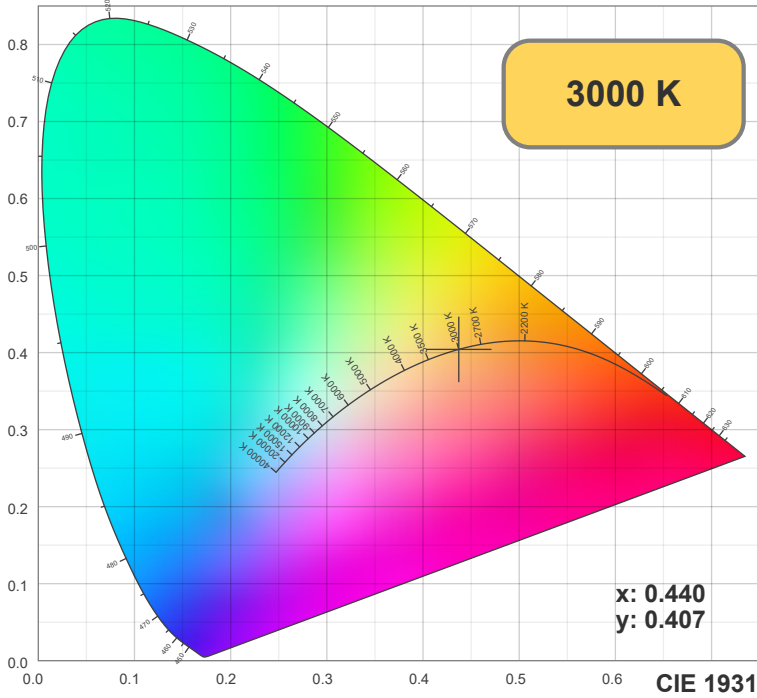


Power

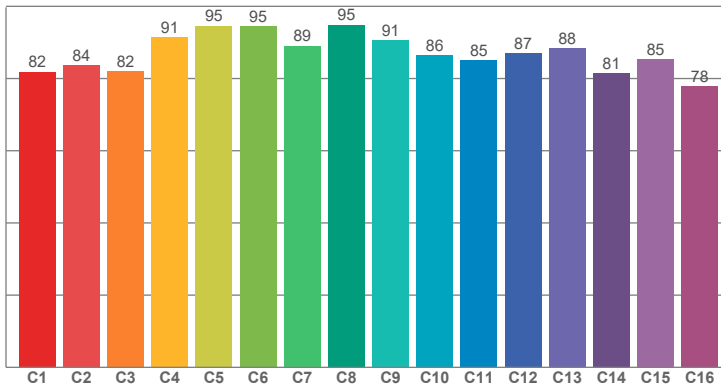
Voltage: 117 V
Current: 0.152 A



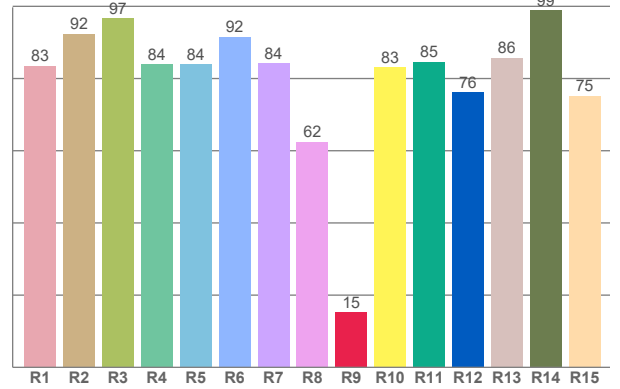
Light measurement was created using the Viso Systems - Light Inspector. www.visosystems.com



TM30: 87.0



CRI: 84.8 (R1-R8)



CRI R values, only R1-R8 are used to calculate final CRI value

R1	R2	R3	R4	R5	R6	R7	R8	R9	R10	R11	R12	R13	R14	R15
83.47	92.37	96.69	83.92	83.94	91.59	84.14	62.43	15.18	83.11	84.58	76.17	85.70	98.82	75.23

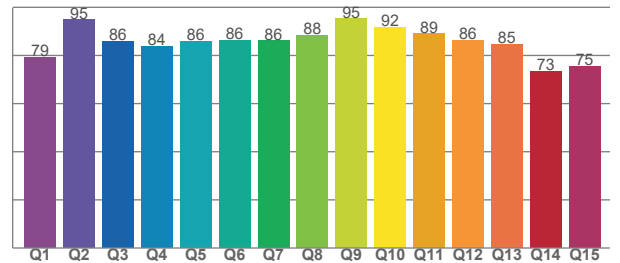
TM30 C values, 16 binned values out of total of 99 C values

C1	C2	C3	C4	C5	C6	C7	C8	C9	C10	C11	C12	C13	C14	C15	C16
81.85	83.67	81.94	91.32	94.57	94.51	89.10	94.83	90.54	86.40	85.05	87.02	88.39	81.36	85.35	77.76

CQS Q values

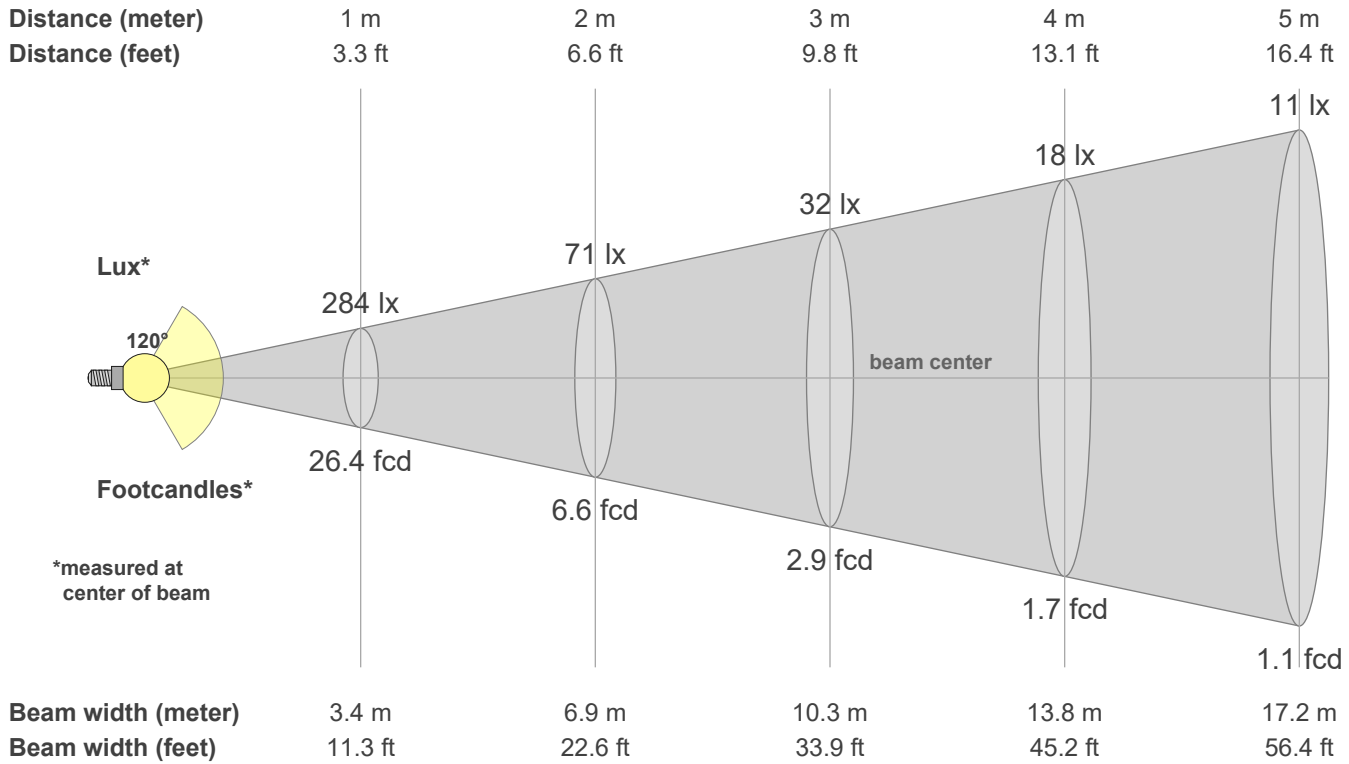
Q1	Q2	Q3	Q4	Q5	Q6	Q7	Q8	Q9	Q10	Q11	Q12	Q13	Q14	Q15
79.18	94.83	85.95	83.72	85.88	86.27	86.11	88.27	95.26	91.62	88.93	86.18	84.52	73.44	75.39

CQS: 84.4



Color parameters

CCT	CRI	CRI R9	TM30 Rf	TM30 Rg	CQS	x	y	u	v	Duv
3000 K	84.8	15.2	87.0	96.1	84.4	0.4	0.4	0.3	0.3	0.0007



Intensities in 0° c-plane

0°	9°	18°	27°	36°	45°	54°	63°	72°	81°	90°	99°	108°	117°	126°	135°	144°	153°	162°	171°
284	282	271	254	230	201	166	129	92	60	35	17	9	5	3	2	2	1	1	1
100%	99%	95%	89%	81%	71%	59%	45%	32%	21%	12%	6%	3%	2%	1%	1%	1%	0%	0%	0%

Intensities in 90° c-plane

0°	9°	18°	27°	36°	45°	54°	63°	72°	81°	90°	99°	108°	117°	126°	135°	144°	153°	162°	171°
284	282	271	254	230	201	166	129	92	60	35	17	9	5	3	2	2	1	1	1
100%	99%	95%	89%	81%	71%	59%	45%	32%	21%	12%	6%	3%	2%	1%	1%	1%	0%	0%	0%

Intensities in 180° c-plane

0°	9°	18°	27°	36°	45°	54°	63°	72°	81°	90°	99°	108°	117°	126°	135°	144°	153°	162°	171°
284	282	271	254	230	201	166	129	92	60	35	17	9	5	3	2	2	1	1	1
100%	99%	95%	89%	81%	71%	59%	45%	32%	21%	12%	6%	3%	2%	1%	1%	1%	0%	0%	0%

Intensities in 270° c-plane

0°	9°	18°	27°	36°	45°	54°	63°	72°	81°	90°	99°	108°	117°	126°	135°	144°	153°	162°	171°
284	282	271	254	230	201	166	129	92	60	35	17	9	5	3	2	2	1	1	1
100%	99%	95%	89%	81%	71%	59%	45%	32%	21%	12%	6%	3%	2%	1%	1%	1%	0%	0%	0%

Beam angle 50%	Field angle 10%	Cutoff angle 2.5%	Intensity ratio in 120° cone	Intensity ratio in 90° cone
119.7°	186.2°	221.7°	68.5%	45.7%