



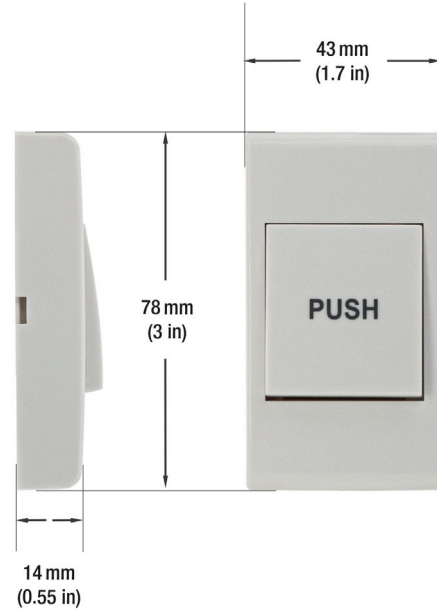
WALL MOUNT LOW VOLTAGE LED DIMMER SWITCH PUSH

Specifications

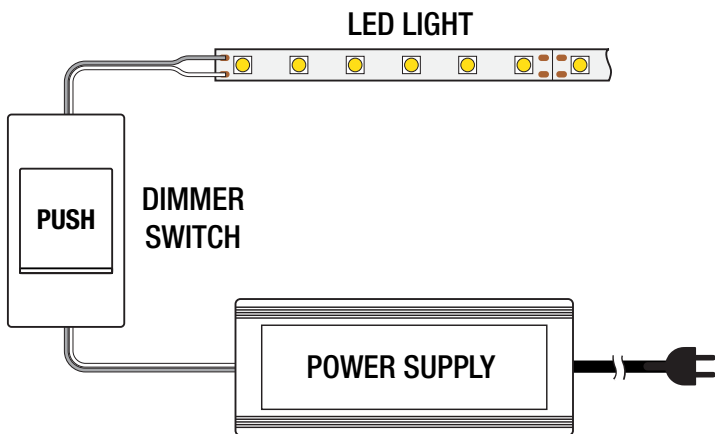
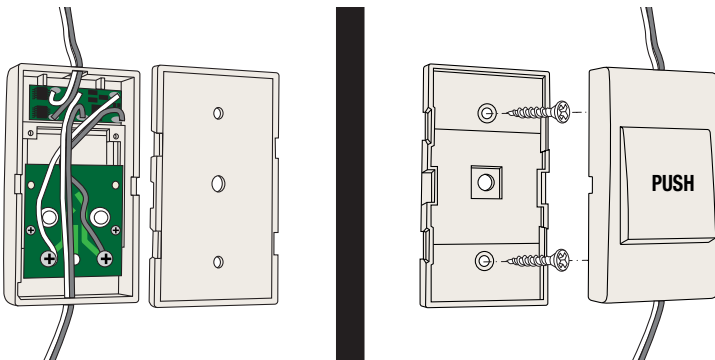
Input Voltage:	12~24V DC
Current:	3A
Usage:	Single Color
Color:	Ivory
Material:	Glossy Plastic
Dimension:	78 x 43 x 14 mm (3 x 1.7 x 0.55 in)
Wire Length:	3 in

Feature

- This product can be easily mounted onto walls.
- Used in various low voltage LED like cabinets, vanity, boats, desks, etc
- Please ensure that your LED load should not exceed more than 3A when using this dimmer.
- Most popular in dimming the automobile lights such as RVs, trailers, boats, cars, trucks, vanity, boats, etc.
- Can also be used for any DIY projects for adjusting the brightness of your LED where very little load is present.



SKU#: 666561406820



Disclaimer

The data and information contained in this specification sheet are subject to change without notice; the ratings supplied are provided based on the product manufacturer. The information contained in this specification sheet should not be considered a warranty, expressed or implied, including, but not limited to, a warranty of merchantability or fitness for a particular purpose. In no event shall LED Lights and Parts be liable for any incidental or consequential damages resulting from the use, misuse, or inability to use the product. This exclusion applies regardless of whether such damages are sought based on breach of warranty, breach of contract, negligence, strict liability in tort, or any other legal theory.