



ELS-CS007W-049

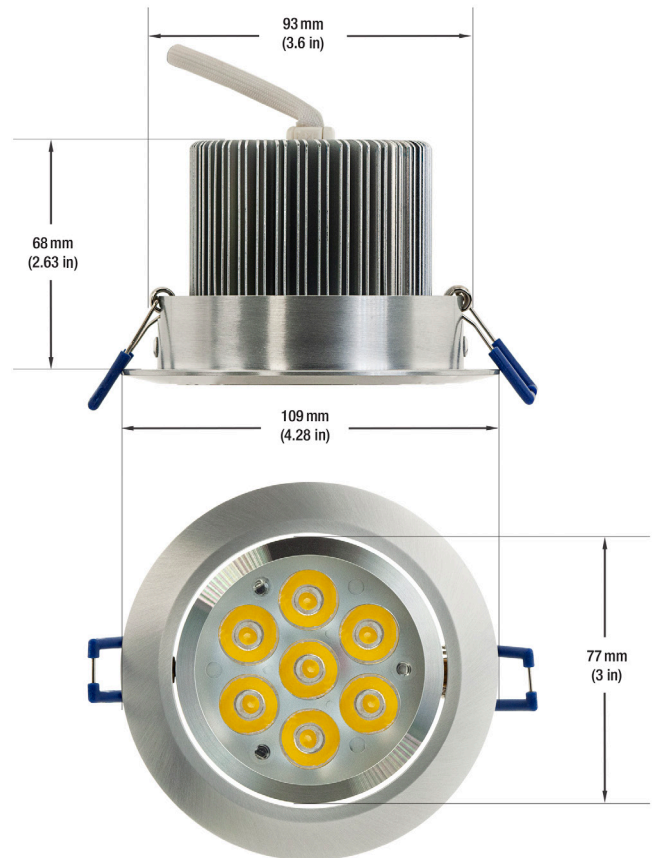
LED CEILING LIGHT, 7W 3000 (WARM WHITE)

Specifications

Model No.:	ELS-CS007W-049
Input Voltage:	12V DC
Wattage:	7W
Frequency:	50-60Hz
Color Temperature:	3000K (Warm White)
Brightness:	650 – 700 Lumens
Light Source Specification:	7 x 1W LED
Body Color:	Silver Gray
Dimmable:	Yes
Beam Angle:	30°
Rendering Index:	CRI>80
IC Rated:	Yes
IP Rated:	IP20 (Dry Locations)
Dimensions:	Ø 109 mm (4.28 in), Depth 68 mm (2.63 in)
Cut Size:	Ø 93 mm (3.6 in)
Certificate:	CE



SKU: 666561405472



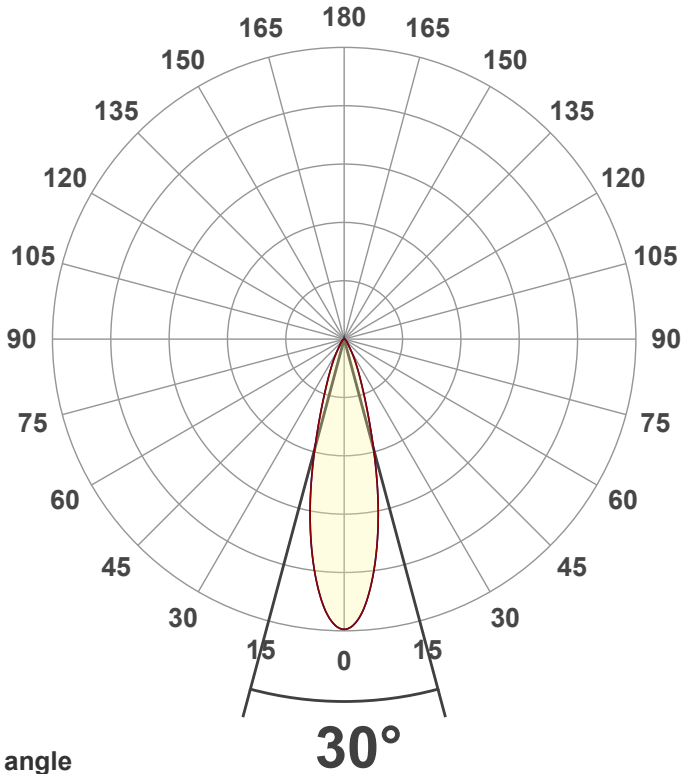
Disclaimer

The data and information contained in this specification sheet are subject to change without notice; the ratings supplied are provided based on the product manufacturer. The information contained in this specification sheet should not be considered a warranty, expressed or implied, including, but not limited to, a warranty of merchantability or fitness for a particular purpose. In no event shall LED Lights and Parts be liable for any incidental or consequential damages resulting from the use, misuse, or inability to use the product. This exclusion applies regardless of whether such damages are sought based on breach of warranty, breach of contract, negligence, strict liability in tort, or any other legal theory.



LED Lights and Parts

WORLD OF LED LIGHTS



Beam angle

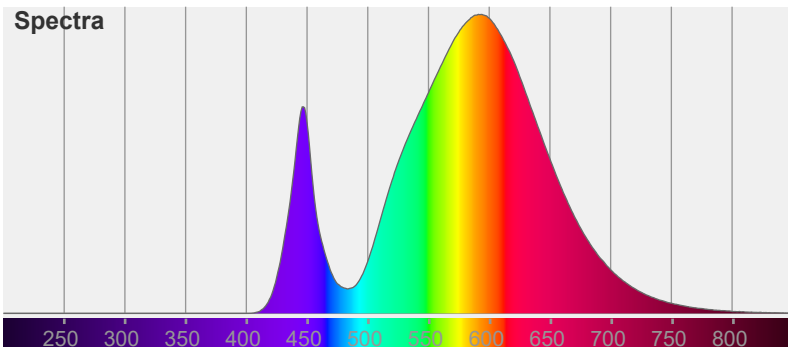


Color

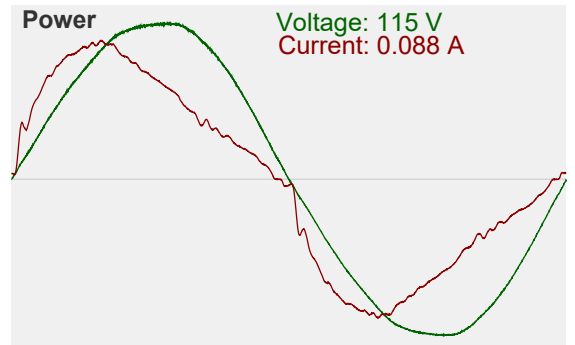


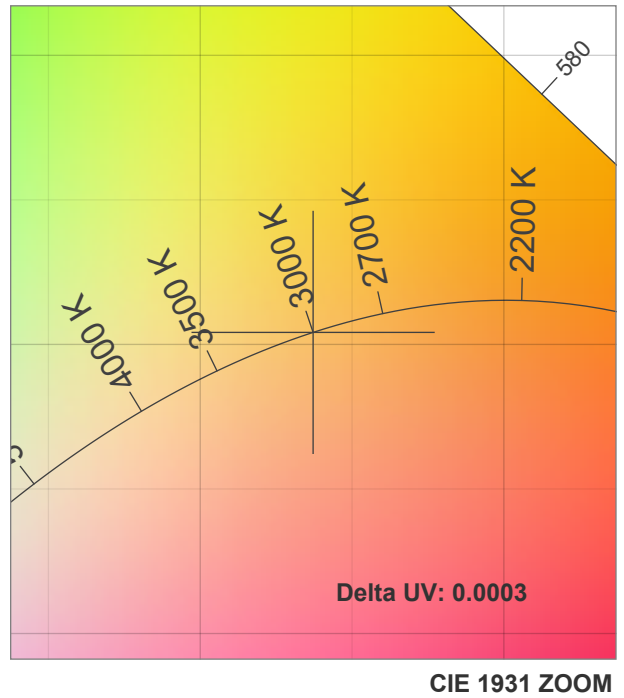
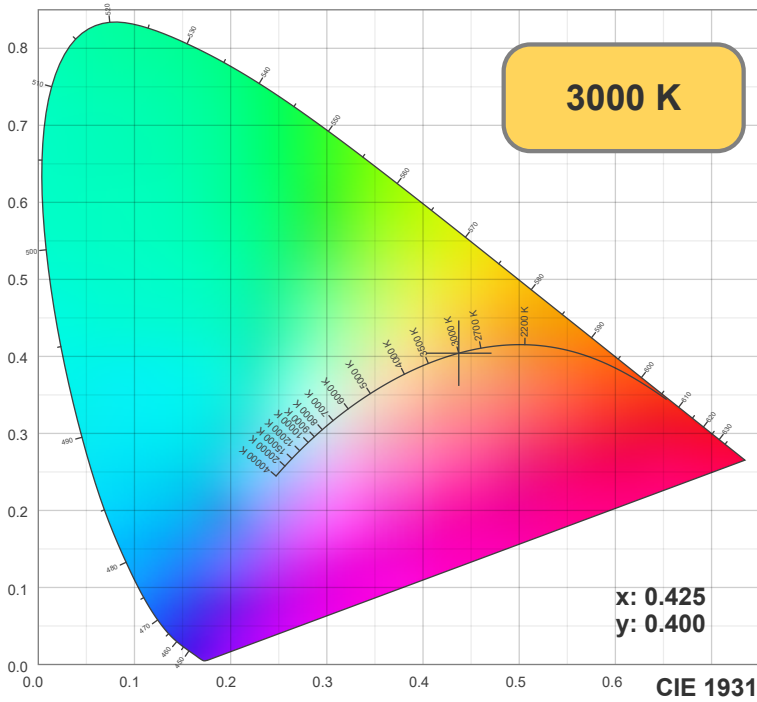
CIE1931
x: 0.425
y: 0.400

Spectra



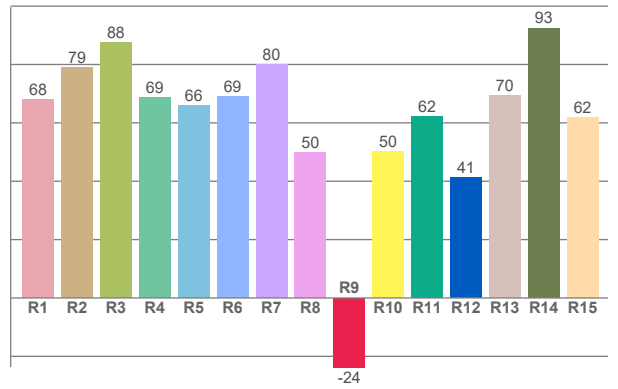
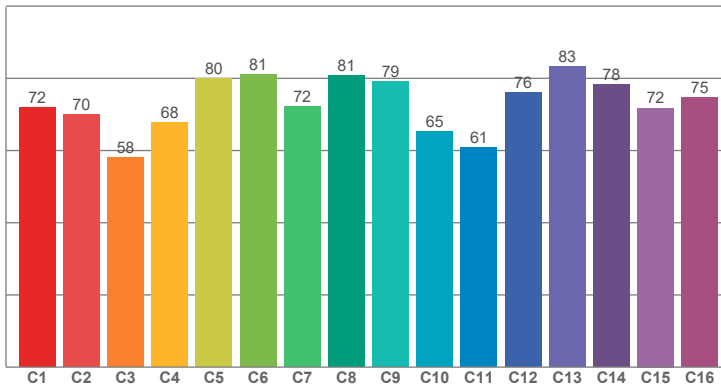
Power





TM30: 72.6

CRI: 71.0 (R1-R8)



CRI R values, only R1-R8 are used to calculate final CRI value

R1	R2	R3	R4	R5	R6	R7	R8	R9	R10	R11	R12	R13	R14	R15
68.00	78.95	87.54	68.70	65.97	69.12	79.98	49.95	-23.70	50.04	62.07	41.27	69.51	92.52	61.69

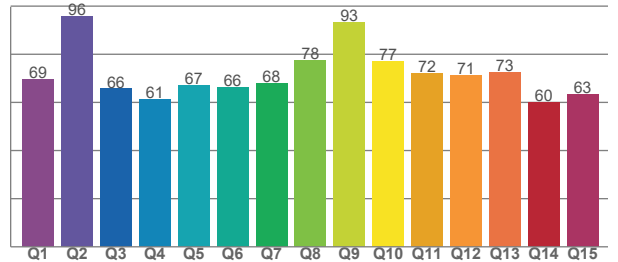
TM30 C values, 16 binned values out of total of 99 C values

C1	C2	C3	C4	C5	C6	C7	C8	C9	C10	C11	C12	C13	C14	C15	C16
71.87	70.02	58.02	67.81	79.93	81.15	72.17	80.72	79.06	65.32	60.86	76.00	83.25	78.26	71.79	74.78

CQS Q values

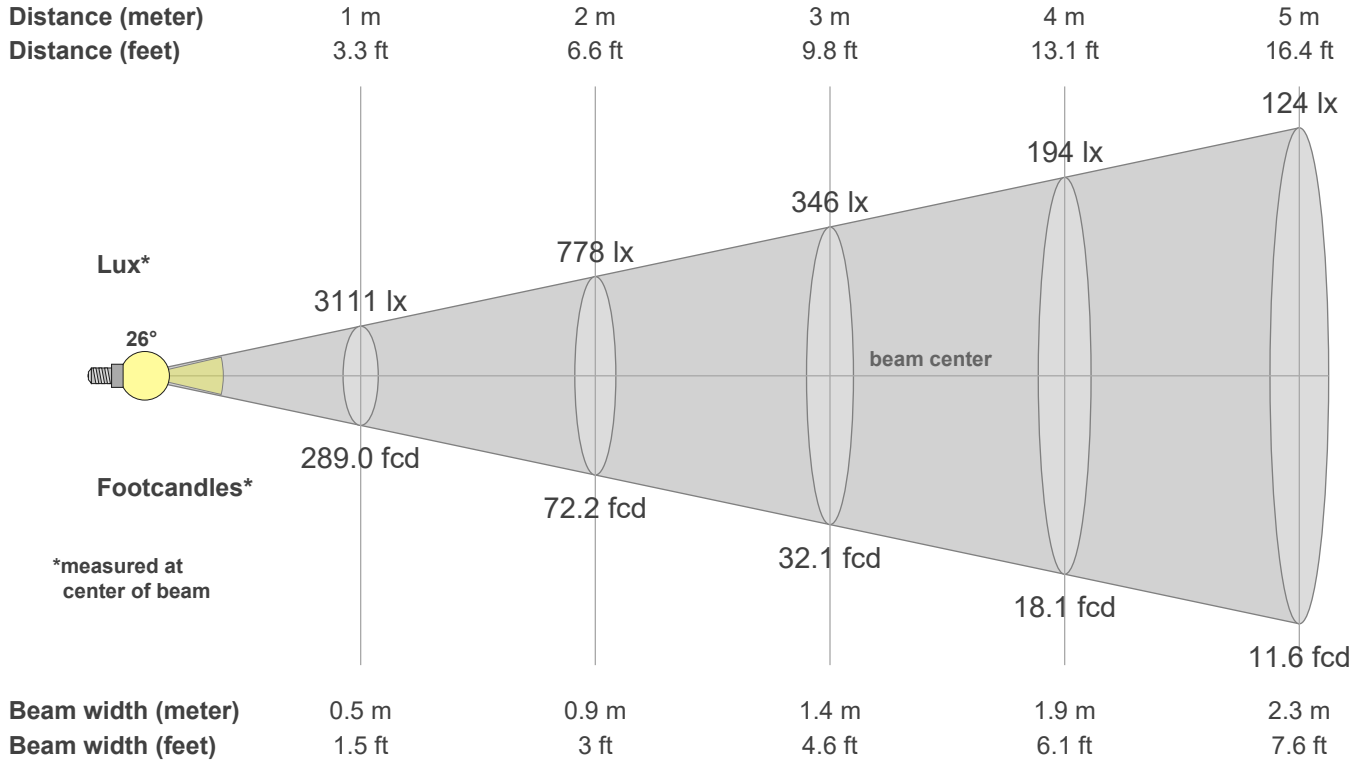
Q1	Q2	Q3	Q4	Q5	Q6	Q7	Q8	Q9	Q10	Q11	Q12	Q13	Q14	Q15
69.47	95.65	65.65	61.25	67.30	66.48	67.99	77.65	93.43	76.97	71.97	71.35	72.59	60.12	63.33

CQS: 70.2



Color parameters

CCT	CRI	CRI R9	TM30 Rf	TM30 Rg	CQS	x	y	u	v	Duv
3000 K	71.0	-23.7	72.6	96.2	70.2	0.4	0.4	0.3	0.3	0.0003



Intensities in 0° c-plane

0°	2°	4°	6°	8°	10°	12°	14°	16°	18°	20°	22°	24°	26°	28°	30°	32°	34°	36°	38°
3111	3059	2913	2683	2401	2083	1741	1388	1061	798	602	463	359	279	214	161	120	93	76	65
100%	98%	94%	86%	77%	67%	56%	45%	34%	26%	19%	15%	12%	9%	7%	5%	4%	3%	2%	2%

Intensities in 90° c-plane

0°	2°	4°	6°	8°	10°	12°	14°	16°	18°	20°	22°	24°	26°	28°	30°	32°	34°	36°	38°
3111	3059	2913	2683	2401	2083	1741	1388	1061	798	602	463	359	279	214	161	120	93	76	65
100%	98%	94%	86%	77%	67%	56%	45%	34%	26%	19%	15%	12%	9%	7%	5%	4%	3%	2%	2%

Intensities in 180° c-plane

0°	2°	4°	6°	8°	10°	12°	14°	16°	18°	20°	22°	24°	26°	28°	30°	32°	34°	36°	38°
3111	3059	2913	2683	2401	2083	1741	1388	1061	798	602	463	359	279	214	161	120	93	76	65
100%	98%	94%	86%	77%	67%	56%	45%	34%	26%	19%	15%	12%	9%	7%	5%	4%	3%	2%	2%

Intensities in 270° c-plane

0°	2°	4°	6°	8°	10°	12°	14°	16°	18°	20°	22°	24°	26°	28°	30°	32°	34°	36°	38°
3111	3059	2913	2683	2401	2083	1741	1388	1061	798	602	463	359	279	214	161	120	93	76	65
100%	98%	94%	86%	77%	67%	56%	45%	34%	26%	19%	15%	12%	9%	7%	5%	4%	3%	2%	2%

Beam angle 50%	Field angle 10%	Cutoff angle 2.5%	Intensity ratio in 120° cone	Intensity ratio in 90° cone
26.1°	50.3°	71.6°	98.3%	94.4%