



GS2003

LED LAWN LIGHT, 12/24V 3W 2900K-3200K (WARM WHITE)

Specifications

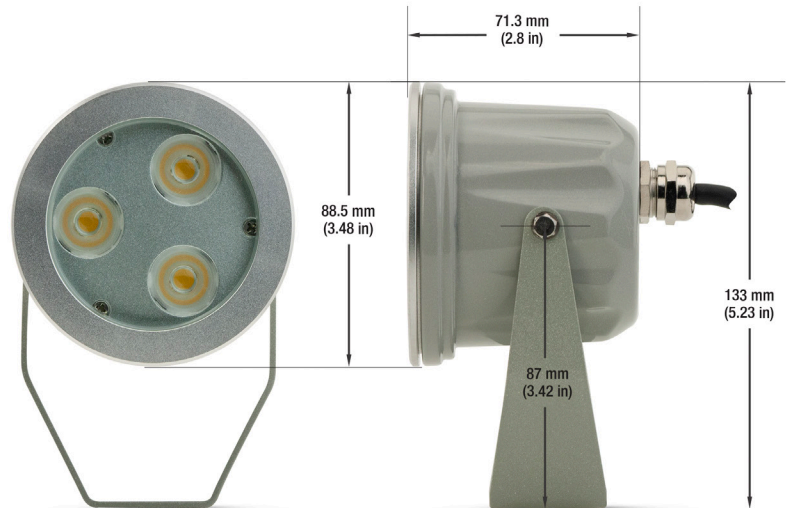
Model No.:	GS2003
Input Voltage:	12/24V DC
Wattage:	3W
Color:	2900K-3200K (Warm White)
Light Source:	3 x 1W LEDs
Body Color:	Grey
Beam Angle:	30°
IP Rating:	IP65 (Suitable for wet locations)
Dimensions:	Ø 88.5 x 71.3 x 133 mm (3.48 x 2.8 x 5.23 in)
Certifications:	CE/RoHs



SKU: 666561402082

Features

- This product is used as a garden light for various purposes such as spotlighting, decoration, and projecting light.
- This product comes with a two-year warranty.



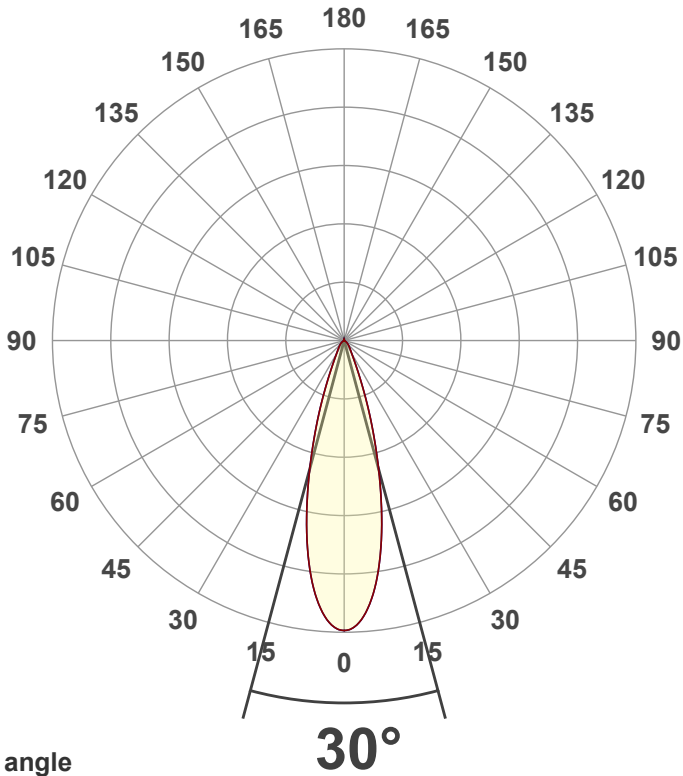
Disclaimer

The data and information contained in this specification sheet are subject to change without notice; the ratings supplied are provided based on the product manufacturer. The information contained in this specification sheet should not be considered a warranty, expressed or implied, including, but not limited to, a warranty of merchantability or fitness for a particular purpose. In no event shall LED Lights and Parts be liable for any incidental or consequential damages resulting from the use, misuse, or inability to use the product. This exclusion applies regardless of whether such damages are sought based on breach of warranty, breach of contract, negligence, strict liability in tort, or any other legal theory.



LED Lights and Parts

WORLD OF LED LIGHTS



Beam angle

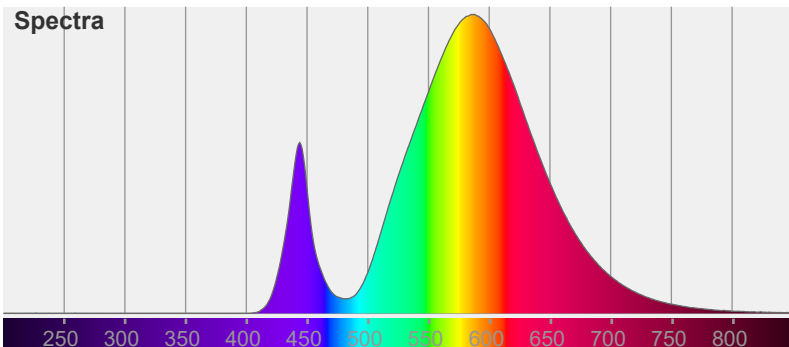


Color

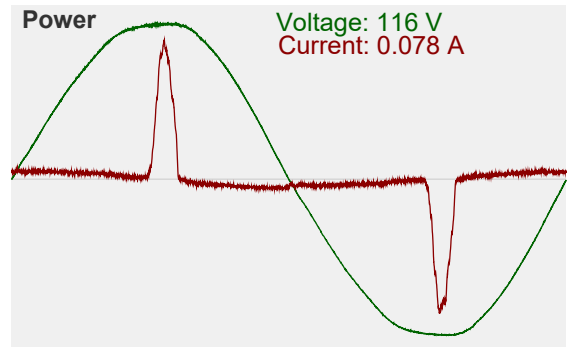


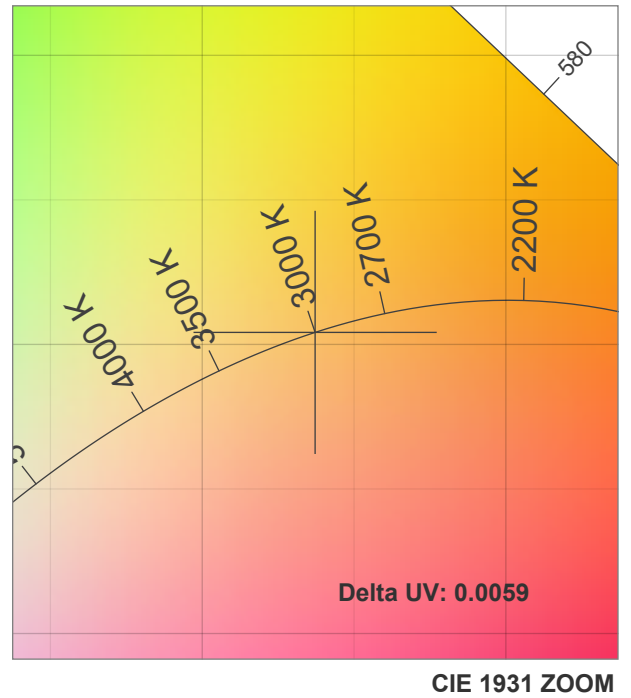
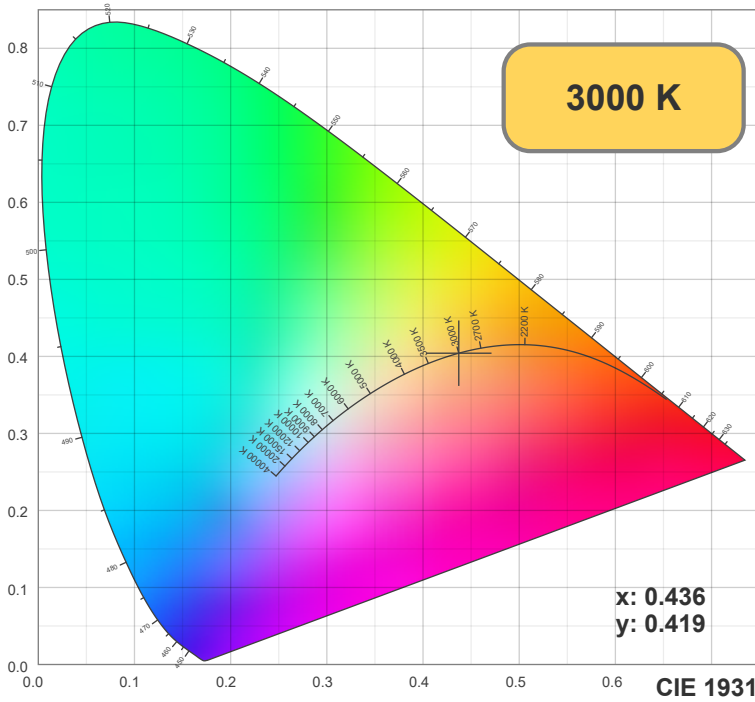
CIE1931
x: 0.436
y: 0.419

Spectra



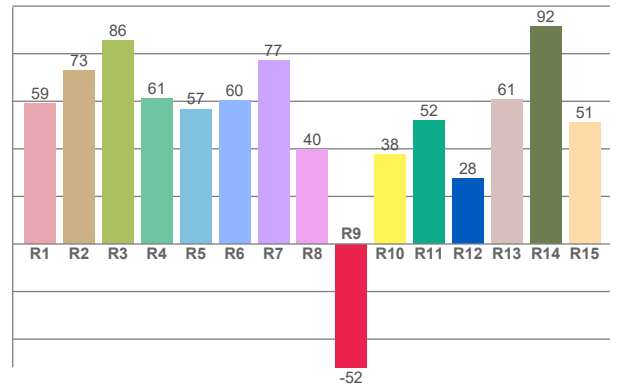
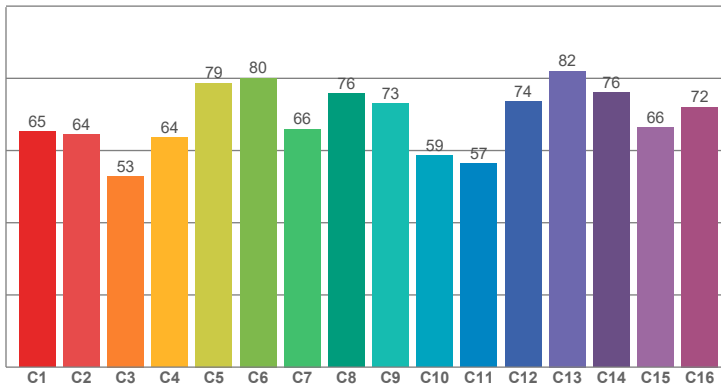
Power





TM30: 68.3

CRI: 64.1 (R1-R8)



CRI R values, only R1-R8 are used to calculate final CRI value

R1	R2	R3	R4	R5	R6	R7	R8	R9	R10	R11	R12	R13	R14	R15
59.03	73.05	85.70	61.20	56.74	60.29	77.25	39.77	-51.78	37.60	51.83	27.65	60.67	91.62	51.06

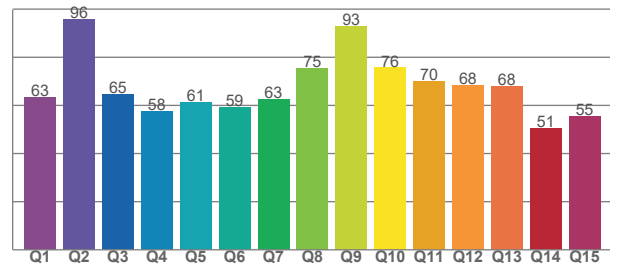
TM30 C values, 16 binned values out of total of 99 C values

C1	C2	C3	C4	C5	C6	C7	C8	C9	C10	C11	C12	C13	C14	C15	C16
65.27	64.40	52.93	63.52	78.72	80.13	65.96	75.82	73.07	58.60	56.50	73.61	82.02	76.14	66.30	72.04

CQS Q values

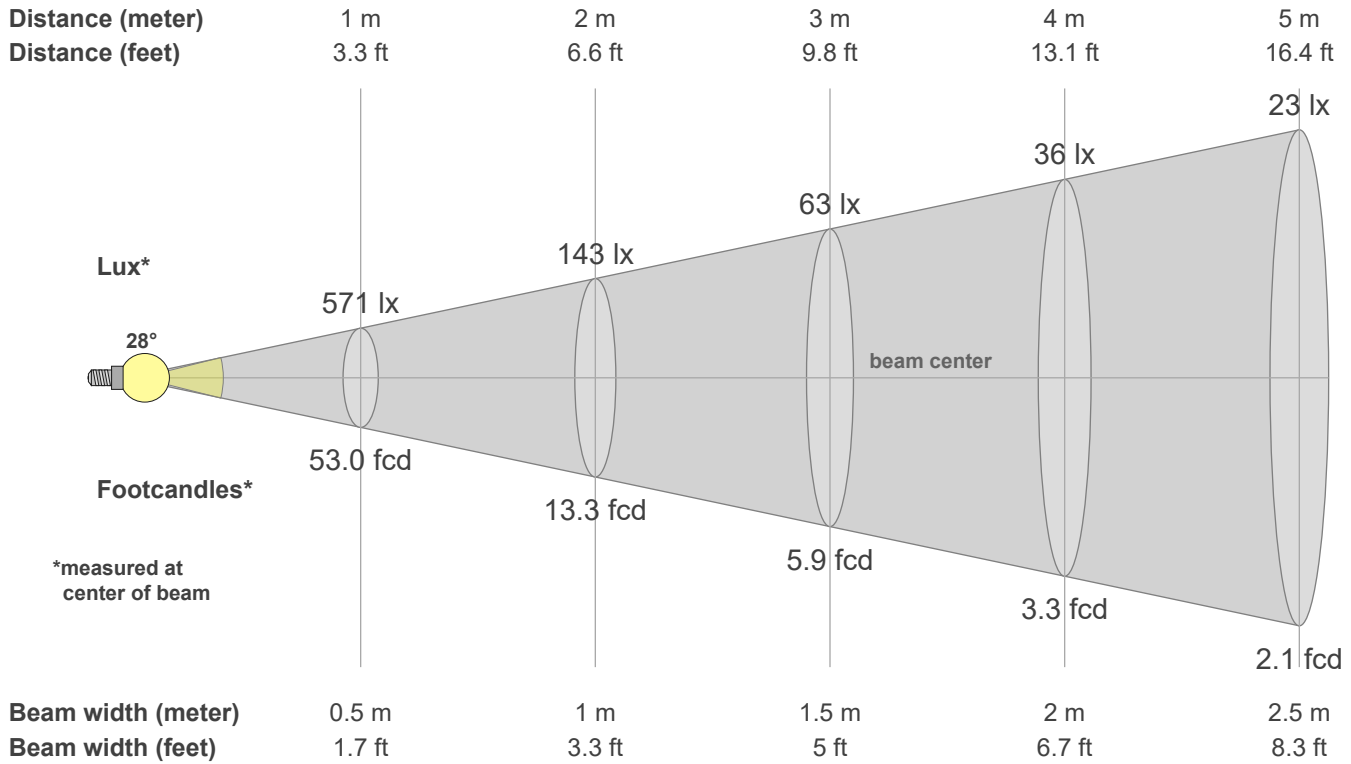
Q1	Q2	Q3	Q4	Q5	Q6	Q7	Q8	Q9	Q10	Q11	Q12	Q13	Q14	Q15
63.22	95.64	64.70	57.52	61.45	59.29	62.66	75.32	92.77	75.65	70.05	68.31	68.08	50.67	55.30

CQS: 65.7



Color parameters

CCT	CRI	CRI R9	TM30 Rf	TM30 Rg	CQS	x	y	u	v	Duv
3000 K	64.1	-51.8	68.3	92.3	65.7	0.4	0.4	0.3	0.3	0.0059



Intensities in 0° c-plane

0°	2°	4°	6°	8°	10°	12°	14°	16°	18°	20°	22°	24°	26°	28°	30°	32°	34°	36°	38°
571	564	544	512	469	415	355	293	232	178	131	93	66	48	37	30	25	22	19	17
100%	99%	95%	90%	82%	73%	62%	51%	41%	31%	23%	16%	12%	8%	7%	5%	4%	4%	3%	3%

Intensities in 90° c-plane

0°	2°	4°	6°	8°	10°	12°	14°	16°	18°	20°	22°	24°	26°	28°	30°	32°	34°	36°	38°
571	564	544	512	469	415	355	293	232	178	131	93	66	48	37	30	25	22	19	17
100%	99%	95%	90%	82%	73%	62%	51%	41%	31%	23%	16%	12%	8%	7%	5%	4%	4%	3%	3%

Intensities in 180° c-plane

0°	2°	4°	6°	8°	10°	12°	14°	16°	18°	20°	22°	24°	26°	28°	30°	32°	34°	36°	38°
571	564	544	512	469	415	355	293	232	178	131	93	66	48	37	30	25	22	19	17
100%	99%	95%	90%	82%	73%	62%	51%	41%	31%	23%	16%	12%	8%	7%	5%	4%	4%	3%	3%

Intensities in 270° c-plane

0°	2°	4°	6°	8°	10°	12°	14°	16°	18°	20°	22°	24°	26°	28°	30°	32°	34°	36°	38°
571	564	544	512	469	415	355	293	232	178	131	93	66	48	37	30	25	22	19	17
100%	99%	95%	90%	82%	73%	62%	51%	41%	31%	23%	16%	12%	8%	7%	5%	4%	4%	3%	3%

Beam angle 50%	Field angle 10%	Cutoff angle 2.5%	Intensity ratio in 120° cone	Intensity ratio in 90° cone
28.5°	49.8°	81.1°	98.4%	93.6%