



RD15

CABINET LIGHT 12V 3W SILVER GREY CCT 3000K, 4000K

Specifications



Model No.:	RD15
Input Voltage:	12V DC
Wattage:	3W
Available Color Temperatures:	3000K (Warm White), 4000K (Natural White)
LED Type:	3 x 5730 SMD
Fixture Color Finish:	Silver Grey
Luminous Flux:	220-250 Lm
Beam Angle:	120°
Material:	Aluminum
IP Rating:	IP20
Rendering Index:	CRI>80
Dimmable:	Yes
Dimensions:	Ø 69.86 mm (2.75 in) x Depth 12.79 mm (0.5 in)
Cut Size Diameter:	Ø 63.5 mm (2.5 in)
Certification:	ETL



3000K(Warm White)

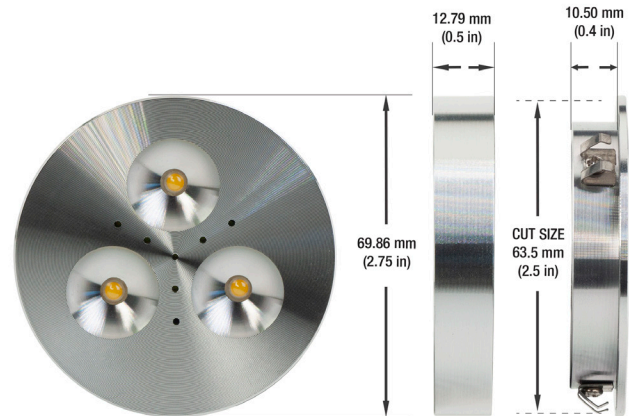
SKU: 666561401962

4000K(Natural White)

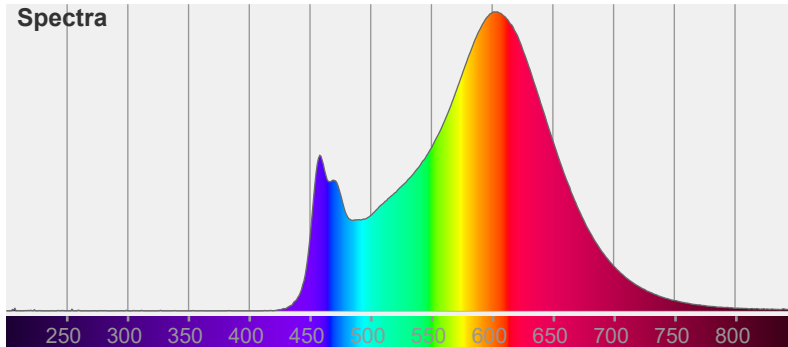
SKU: 666561412999

Features

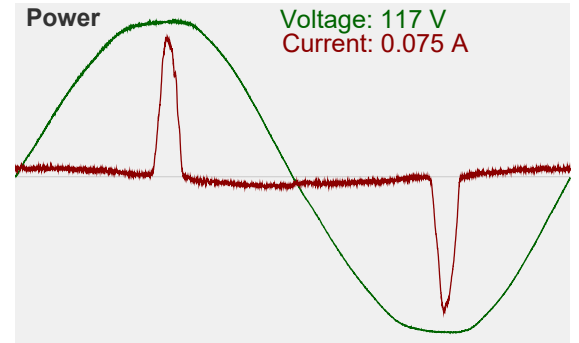
- Aluminum housing, well heat dissipation, long lifespan, and low light decay.
- Environmentally friendly, RoHS compliant.
- Low power consumption, and high energy efficiency.
- Widely applied in wardrobe, cabinet, and shelves of a modern kitchen.
- Can be used as both flush mount and surface mount.
- Rated CRI>80 and meets the Canadian and United States standards with UL STD. C22.2
- Protection from a large part of the body, such as a hand having an IP 20 rating.
- Applicable only for dry locations.
- We offer a step-down transformer to line voltage in both hardwire and plugin.
- Comes with the push springs, easy to install for the flush mount feature. else, can be screwed directly onto the surface.
- The dimmer controller must have the same input rating as the dimmable power supply or driver. Other low-voltage dimmers are also compatible.
- Available in Silver Grey, White, and Black color trims.
- Comes with 3 feet of wire AWG20.
- Available in 2 different color temperatures. (warm white), (natural white).
- Depending upon the wattage of the transformer, any number of lights can go on one switch.
- A good replacement for a halogen light fixture with a cut size of 2.5 inches.



Spectra

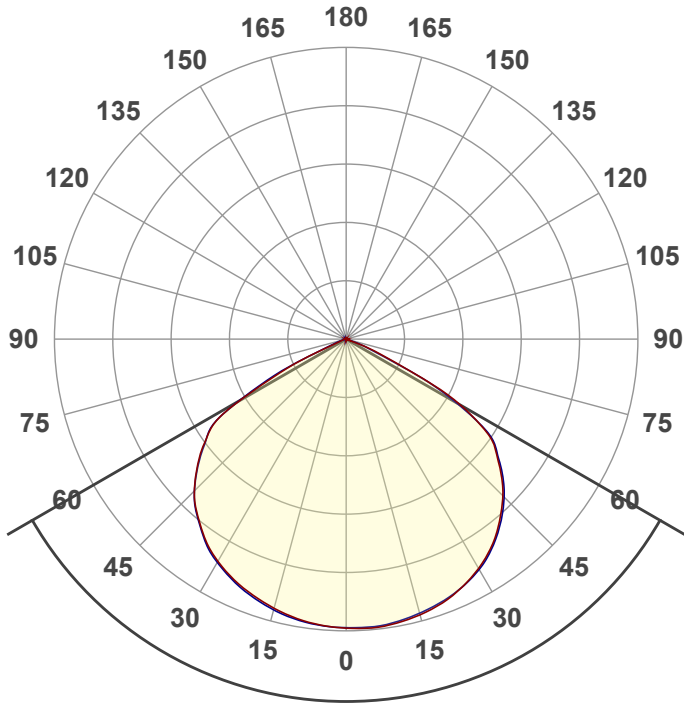


Power



Disclaimer

The data and information contained in this specification sheet are subject to change without notice; the ratings supplied are provided based on the product manufacturer. The information contained in this specification sheet should not be considered a warranty, expressed or implied, including, but not limited to, a warranty of merchantability or fitness for a particular purpose. In no event shall LED Lights and Parts be liable for any incidental or consequential damages resulting from the use, misuse, or inability to use the product. This exclusion applies regardless of whether such damages are sought based on breach of warranty, breach of contract, negligence, strict liability in tort, or any other legal theory.



Beam angle

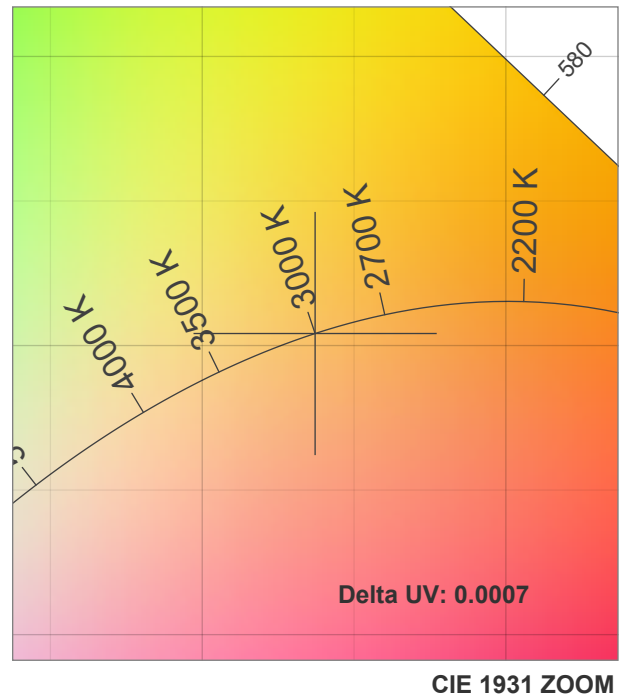
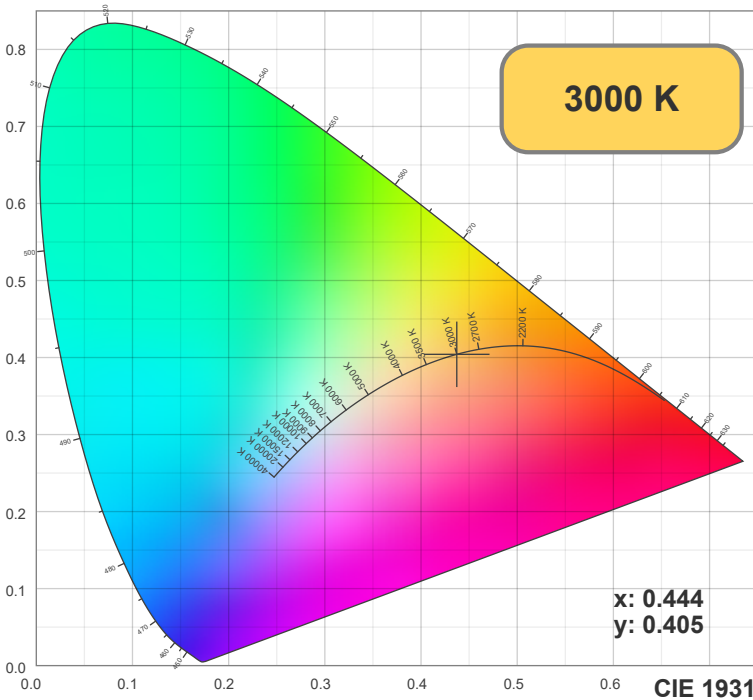
120°



Color

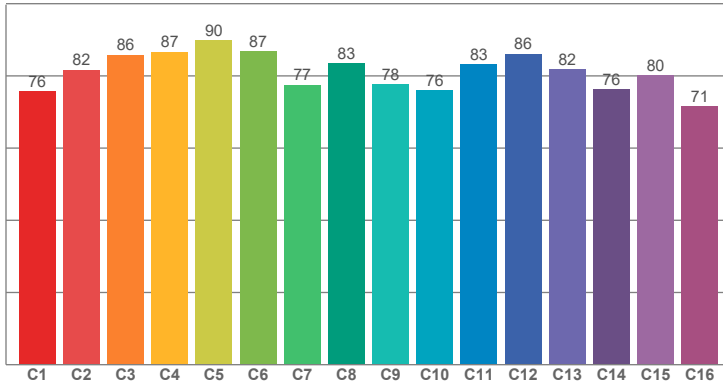


CIE1931
x: 0.444
y: 0.405

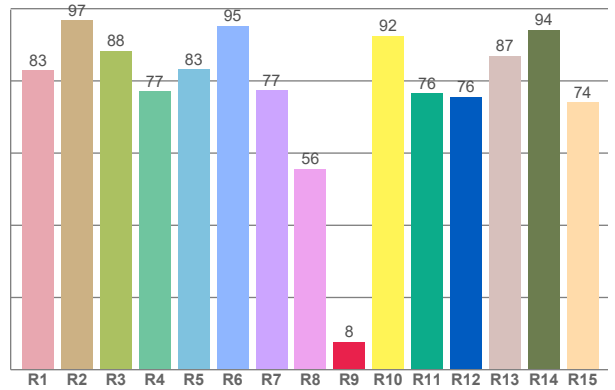




TM30: 81.4



CRI: 82.0 (R1-R8)



CRI R values, only R1-R8 are used to calculate final CRI value

R1	R2	R3	R4	R5	R6	R7	R8	R9	R10	R11	R12	R13	R14	R15
82.85	96.68	88.27	77.04	83.27	95.26	77.41	55.58	7.67	92.44	76.50	75.57	86.89	94.11	74.07

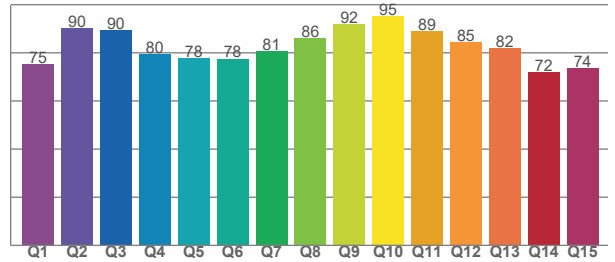
TM30 C values, 16 binned values out of total of 99 C values

C1	C2	C3	C4	C5	C6	C7	C8	C9	C10	C11	C12	C13	C14	C15	C16
75.73	81.70	85.77	86.68	89.91	86.83	77.50	83.46	77.66	75.90	83.19	86.13	81.74	76.27	80.16	71.49

CQS Q values

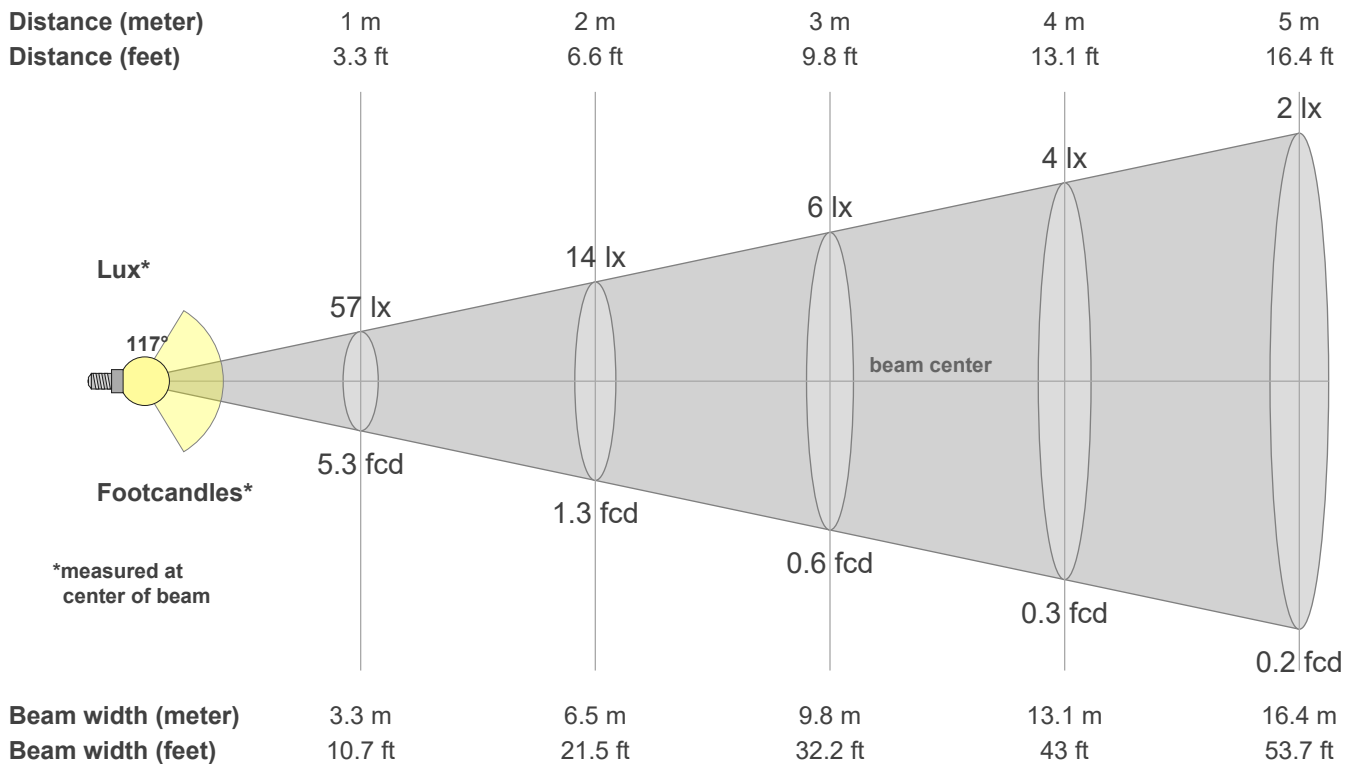
Q1	Q2	Q3	Q4	Q5	Q6	Q7	Q8	Q9	Q10	Q11	Q12	Q13	Q14	Q15
75.33	90.16	89.52	79.62	77.71	77.56	80.70	86.25	92.08	95.07	89.11	84.56	82.09	71.87	73.65

CQS: 81.5



Color parameters

CCT	CRI	CRI R9	TM30 Rf	TM30 Rg	CQS	x	y	u	v	Duv
3000 K	82.0	7.7	81.4	89.5	81.5	0.4	0.4	0.3	0.3	-0.0007





Intensities in 0° c-plane

0°	5°	10°	15°	20°	25°	30°	35°	40°	45°	50°	55°	60°	65°	70°	75°	80°	85°	90°	95°
56.5	56.8	56.5	55.9	55.0	53.6	51.8	49.5	46.6	43.3	39.3	34.5	25.4	11.2	2.2	0.1	0.0	0.0	0.0	0.0
100%	100%	100%	99%	97%	95%	92%	88%	82%	77%	69%	61%	45%	20%	4%	0%	0%	0%	0%	0%

Intensities in 90° c-plane

0°	5°	10°	15°	20°	25°	30°	35°	40°	45°	50°	55°	60°	65°	70°	75°	80°	85°	90°	95°
56.5	56.5	56.2	55.6	54.7	53.6	52.0	49.8	47.0	43.7	39.6	34.7	24.6	10.5	2.0	0.1	0.0	0.0	0.0	0.0
100%	100%	99%	98%	97%	95%	92%	88%	83%	77%	70%	61%	44%	19%	4%	0%	0%	0%	0%	0%

Intensities in 180° c-plane

0°	5°	10°	15°	20°	25°	30°	35°	40°	45°	50°	55°	60°	65°	70°	75°	80°	85°	90°	95°
56.5	56.2	55.5	54.6	53.3	52.0	50.2	48.0	45.2	42.0	37.8	32.8	24.3	10.0	1.2	0.0	0.0	0.0	0.0	0.0
100%	99%	98%	96%	94%	92%	89%	85%	80%	74%	67%	58%	43%	18%	2%	0%	0%	0%	0%	0%

Intensities in 270° c-plane

0°	5°	10°	15°	20°	25°	30°	35°	40°	45°	50°	55°	60°	65°	70°	75°	80°	85°	90°	95°
56.5	56.3	55.7	54.9	53.7	52.2	50.4	48.2	45.3	41.9	37.6	32.8	24.4	11.0	1.8	0.1	0.0	0.0	0.0	0.0
100%	100%	99%	97%	95%	92%	89%	85%	80%	74%	67%	58%	43%	19%	3%	0%	0%	0%	0%	0%

Beam angle 50%	Field angle 10%	Cutoff angle 2.5%	Intensity ratio in 120° cone	Intensity ratio in 90° cone
117.2°	134.0°	140.6°	92.5%	61.6%