

July 2021



Speedfit Twist and Lock Range

10mm, 15mm, 22mm, 28mm
Non-Watermarked Pipe and Fittings

The RWC logo is located in the bottom right corner, set against a yellow and blue diagonal background. It features the letters 'RWC' in a bold, black, sans-serif font with a white dot over the 'i'.



☎ 1800 810 803

✉ sales@rmc.com.au

🌐 johnguest.com



Reliance Worldwide Corporation (Aust.) Pty. Ltd.
27-28 Chapman Place, Eagle Farm QLD 4009,
Australia | ABN 71 004 784 301

Terms, Conditions and Warranty

Pricing	1
Terms and Conditions	1
Reliance Worldwide Corporation Warranty	1

Introduction

About John Guest	2
Quality Manufacture	2
Non-Watermarked Product Tested to AS/NZS 4020	3
International Standards	3

Speedfit Twist and Lock Range

Technical Specifications	4
Equal Straight Connector	6
Reducing Straight Connector	6
Equal Elbow	6
Equal Tee	6
Reducing Tee	7
Stem Elbow	7
Stem Tee	7
Bent Tap Connector	7
Straight Tap Connector	7
Reducer	7
Stop End	8
Brass Male Adaptor BSP	8
Brass Male Adaptor BSPT	8
Male Stem Adaptor	8
Female Stem Adaptor	8
Back Plated Elbow	8
Superseal Pipe Insert	9
White BPEX Pipe – Coils	9
White BPEX Pipe – Straight Lengths	9
Pipe Clips And Spacers	9
Collet Locking Clips	9

Pricing

List Price is per unit. All prices exclude GST.

If you are requiring an item that you do not see listed in this booklet, please contact our customer service team on 1800 810 803.

Terms and Conditions

No party should rely upon the contents of this publication as to the fitness of any particular product for any particular use or application. Goods are offered with the benefit of the manufacturers Warranty. Reliance Worldwide Corporation (AUST.) Pty Ltd. shall not be liable for any loss or damage either direct or consequential arising from any defect.

RWC reserves the right to modify designs and specifications and to withdraw and introduce products at any time without notice.

No part of this publication may be reproduced, copied or transmitted in any form by any means graphic, electronic or mechanical (including photo-copying, recording, taping or by any information storage and retrieval system) without prior permission in writing of the publisher Reliance Worldwide Corporation (Aust.) Pty. Ltd.

Reliance Worldwide Corporation Warranty

Reliance Worldwide Corporation (Aust.) Pty. Ltd. (RWC) will either replace or repair any defective goods where the defect arose as a result of manufacture for up to twenty-five (25) years for WaterMarked products, and one (1) year for non-WaterMarked products (see www.rmc.com.au/warranty for more details). You may contact RWC at the phone number, address or e-mail shown below and will be required to return the goods for evaluation. Should the defect be found to be one of our manufacture we will send you a replacement product to your stated address at our expense. Our goods come with guarantees that cannot be excluded under Australian Consumer Law. You are entitled to a replacement or refund for a major failure and for compensation for any other reasonably foreseeable loss or damage. You are also entitled to have the goods repaired or replaced if the goods fail to be of acceptable quality and failure does not amount to a major failure.

® = Registered Trade Mark of
Reliance Worldwide Corporation (Aust.) Pty. Ltd.
27-28 Chapman Place, Eagle Farm QLD 4009, Australia
1800 810 803 | sales@rmc.com.au

© 2021 All rights reserved

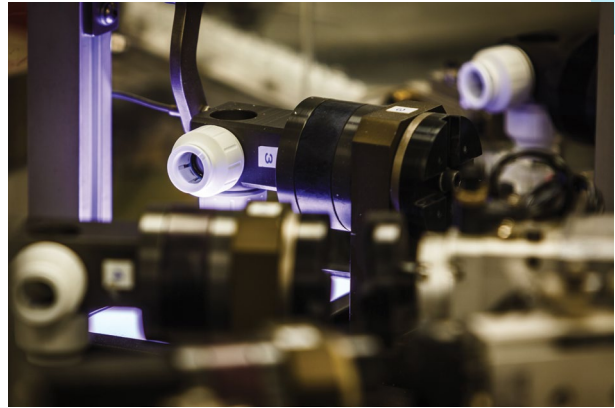
About John Guest

When Mr. John Guest first opened his factory doors in the UK in 1961, he was determined to run a company where quality of product and excellence of service underpinned its ethos.

A strong spirit of innovation was encouraged from the outset, which led to the development and invention of the first Speedfit push-to-connect fittings in the 1970's by John Guest himself.

Today, John Guest has a long established reputation as a world leading manufacturer of push-to-connect fittings, tubing and other fluid control products. A reputation built on producing consistently high quality products with an ongoing commitment to value engineering and product development.

The world's first food-quality push-to-connect fitting, the John Guest range is now over 800 items strong and provides the quickest and most effective of installations. Pushing the tube into the fitting is all that is needed to produce an instant but permanent leakproof connection.



Quality Manufacture

A commitment to quality is at the heart of the John Guest philosophy.

The strictest control is maintained by virtue of the fact that design and manufacture is carried out in modern purpose built manufacturing centres in West London and at Maidenhead in Berkshire.

Maintaining control over the whole process from initial tool design and tool making, through to final assembly and testing, ensuring that only products of the highest quality are produced.

The company believe it is this commitment to quality that has led to it receiving prestigious awards from many of the world's leading testing and approvals organisations.

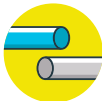
John Guest is a preferred supplier to many international companies.



**Fast Installation Time
'Right First Time Every Time'**



Quick Disconnection



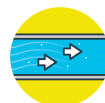
**Suitable For Soft
Metal or Plastic Tubes**



Re-Usable



No Tools Needed



Superior Flow Characteristics



Non-Watermarked Product Tested to AS/NZS 4020

All John Guest potable water products are certified to AS/NZS 4020 for use in contact with potable water. Products that have not been certified to Australian standards through the WaterMark scheme are not suitable for installation within a plumbing system covered as AS/NZS 3500. All John Guest products that do not have a WaterMark approval are to be used in a serviceable location and must not be used in behind-the-wall applications.

The only exception to this is where a John Guest product is utilised as a sub-component in another manufacturer's product that carries an appropriate WaterMark certification.

All John Guest products should be installed as per the installation instructions and within the prescribed operation conditions as detailed in the appropriate technical manual section. Failure to ensure proper installation methods and operating conditions may result in a shortened operating life and or voiding of the product warranty.

Installations may be subject to the requirements of the applicable regulatory authority, the National Construction Code Volume Three – Plumbing Code of Australia, associated reference standards as applicable at the time and AS/NZS 3500.

International Standards

Accepted by almost all the world's beer and beverage producers and by the manufacturers of drinks dispense equipment, John Guest products have quality and performance approvals from leading testing and acceptance authorities.

Speedfit products are designed and manufactured under a fully integrated system assessed by B.S.I to BS EN ISO9001. They are approved by IAPMO Oceana for hot and cold water use (ISO15875/21003).



Speedfit Twist and Lock Technical Specifications

Fittings and pipe should be kept clean and undamaged before use.

Sizes

10mm, 15mm, 22mm and 28mm outside diameter (OD) pipe.

High Temperatures

In case of malfunction, the Speedfit Twist and Lock system can withstand 100°C intermittently for short periods. The Speedfit Twist and Lock system should not be used on an uncontrolled heat source.

Minimum Bend Radii (BPEX)

Pipe OD	Minimum Radius	Minimum Radius With Cold Forming Bend
10mm	100mm	30mm
15mm	175mm	75mm
22mm	225mm	110mm
28mm	300mm	

Clip Spacing

For surface mounted pipes. Where pipe is concealed, clipping may only be required where necessary.

Pipe OD	Clip Spacing	
	Horizontal Run	Vertical Run
10 – 15mm	300mm	500mm
22mm	500mm	800mm
28mm	800mm	1000mm

Expansion (PEX pipe)

1% on length between 20°C and 82°C.

Pipe Clips

Pipe clips should not be fitted any closer than 60mm from the end of the fitting. Pipe should be adequately supported by pipe clips to prevent undue stress (side load) on fittings.

Pipe Inserts

Pipe inserts must be used on all installations when using plastic pipe and should be fully inserted. Only use a Speedfit insert with Speedfit pipe.

Paint and Chemicals

Before using Speedfit fittings and pipe with chemicals or other potentially aggressive liquids, please contact our Customer Service Department.

Use only water or oil based paint. **Do not allow contact with** jointing compounds, cellulose based paints, paint thinners or strippers, solder flux, acid based descalents, or aggressive cleaning products, including those below pH4, high in hypochlorite (e.g. bleach), or containing hydrogen peroxide.

UV Resistance

Speedfit products should **not** be installed in direct or reflected sunlight as the material may degrade with extended UV exposure.

Brazing Flux

No fluxes of any type should come into contact with Speedfit fittings or pipe.

Copper Capillary Adaptors

Braze a Speedfit copper capillary adaptor to the copper pipe and allow capillary joint to cool completely, making sure that the Speedfit stem end is free of any flux, or other contaminant, before inserting any Speedfit fittings.

Chlorine

Speedfit Twist and Lock is not suitable for use in systems where the water contains high levels of chlorine (e.g. swimming pools and fountains).

Metal Joists

When 'cabling' plastic pipe through metal joists, ensure rubber grommets are in place to prevent damage to pipe. Use of collet clips on standard fittings is recommended.

Connection to Water Heaters

Not to be used beyond the inlet stop valve, and within 1 metre of the outlet of the water heater.

Connection to Copper Pipe

450mm is the minimum distance to make a brazed connection on copper pipe where brazing tails are inserted into Speedfit connectors. Ensure that any residual flux does not come into contact with the fitting.

Concrete and Masonry

Speedfit pipe and fittings can be laid in concrete and masonry, providing they are installed in conduit pipe with access boxes for the fittings. This is to enable the pipe to expand and provide accessibility for both pipe and fittings. Fittings and pipe should be removable for possible replacement. Insulation is also recommended to protect against heat loss and the effects of frost.

Electrical Continuity

If Speedfit is used in an existing metal system which may have been used for earthing, electrical continuity should be reinstated.

Collet Clips

Collet Clips prevent accidental release of pipe from non-Twist and Lock fittings, i.e. stop ends and brass fittings. Red and blue clips can also be used to provide colour coding of pipe on both Twist and Lock, and other Speedfit fittings.

Re-Circulating Ring Main Systems

Speedfit products must not be used on any re-circulating ring main systems, as they are not approved under the current standards.

System Testing

To ensure the pipe work and fittings have been installed correctly, whether it be on a new or extended system, it is essential that the system is checked, and hydraulically wet tested. Testing should be at 200kPa for 10 minutes.

System Flushing

As is usual practice for any plumbing installation, flushing of the system prior to the use of Speedfit is recommended to remove any contaminants/chemical residue from elsewhere in the system.

Vermin

Speedfit products should not be used in vermin infested areas.

Maximum Torque Figures

Plastic threads are not generally as strong as brass threads. Customers and end users should be aware of this when choosing products for their applications. Over tightening of plastic threads will cause undue stress and eventual cracking and leakage. The maximum torque figures for BSP, and BSPT threads, used on Speedfit plumbing products, in mating threads, conforming to the relevant British or International thread standards, are as follows:

Threads	Size	Maximum Torque
Brass	1/2"	4.0 Nm
Brass	3/4"	5.0 Nm

It is recommended that all installations are checked prior to use to determine that seal has been made.

Speedfit Twist and Lock Range

Speedfit Twist and Lock fittings have a unique grip-then-seal construction, made up of a collet with stainless steel teeth to grip the pipe, and an O-Ring to provide a permanent leak proof seal.

Temperature	Pressure	Temperature	Pressure
AIR/VACUUM	10mm - 28mm	DO NOT FREEZE	
	Not Suitable	+20°C	1200kPa
		+95°C	600kPa



Equal Straight Connector

Order Code	Size	List Price
PEM0410W	10mm	6.07
PEM0415W	15mm	4.19
PEM0422W	22mm	7.57
PEM0428W	28mm	18.76



Reducing Straight Connector

Order Code	Size	List Price
PEM201510W	15mm x 10mm	9.07
PEM202215W	22mm x 15mm	11.68



Equal Elbow

Order Code	Size	List Price
PEM0310W	10mm	7.08
PEM0315W	15mm	5.09
PEM0322W	22mm	8.64
PEM0328W	28mm	22.50



Equal Tee

Order Code	Size	List Price
PEM0210W	10mm	8.26
PEM0215W	15mm	7.43
PEM0222W	22mm	12.16
PEM0228W	28mm	31.27



Reducing Tee

Order Code	Size	List Price
PEM302210AW	22mm x 22mm x 10mm	12.76
PEM3022AW	22mm x 22mm x 15mm	13.79
PEM3022BW	22mm x 15mm x 15mm	13.78
PEM3022CW	15mm x 15mm x 22mm	13.79
PEM3022DW	22mm x 15mm x 22mm	13.78
PEM3028AW	28mm x 28mm x 22mm	31.27
PEM3028BW	28mm x 22mm x 22mm	31.27
PEM3028DW	28mm x 22mm x 28mm	31.27



Stem Elbow

Order Code	Size	List Price
PEM221010W	10mm	8.49
PEM221515W	15mm	7.37
PEM222222W	22mm	12.16

Provides a swivel type connection.



Stem Tee

Order Code	Size	List Price
PEM532210W	22mm x 22mm x 10mm	11.68
PEM532215W	22mm x 22mm x 15mm	11.68



Bent Tap Connector

Order Code	Size	List Price
PEMBTC1514	15mm x 1/2" BSP Bent Tap Connector	8.94



Straight Tap Connector

Order Code	Size	List Price
PEMSTC2216	22mm x 3/4" BSP Straight Tap Connector	9.22



Reducer

Order Code	Size	List Price
PEM061510W	15mm Stem x 10mm Tube	7.56
PEM062215W	22mm Stem x 15mm Tube	5.94
PEM062815W	28mm Stem x 15mm Tube	12.32
PEM062822W	28mm Stem x 22mm Tube	13.10



Stop End

Order Code	Size	List Price
PSE4615W	15mm	4.12
PSE4622W	22mm	6.01

For a permanent or temporary shut off.



Brass Male Adaptor BSP

Order Code	Size	List Price
15MC(1/2)	15mm x 1/2" BSP Male	13.19
22MC(3/4)	22mm x 3/4" BSP Male	26.93



Brass Male Adaptor BSPT

Order Code	Size	List Price
MW011504N	15mm x 1/2" BSPT Male	12.31
MW012206N	22mm x 3/4" BSPT Male	19.95
MW012808N	28mm x 1" BSPT Male	39.06



Male Stem Adaptor

Order Code	Size	List Price
MW051504N	15mm Stem x 1/2" BSPT Male	16.97
MW052206N	22mm Stem x 3/4" BSPT Male	25.75
MW052818N	28mm Stem x 1" BSP Male	33.26



Female Stem Adaptor

Order Code	Size	List Price
MW501514N	15mm Stem x 1/2" BSP Female	19.57
MW502216N	22mm Stem x 3/4" BSP Female	26.21



Back Plated Elbow

Order Code	Size	List Price
15WB	15mm x 1/2" Female BSP	22.12
22WB	22mm x 3/4" Female BSP	24.26



Superseal Pipe Insert

Order Code	Size	List Price
STS10	10mm	0.74
STS15	15mm	0.74
STS22	22mm	0.94
STS28	28mm	1.43



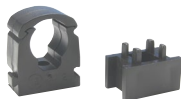
White BPEX Pipe – Coils

Order Code	Size	List Price
10BPEX-100C	10mm x 100m Coil	428.35
15BPEX-25C	15mm x 25m Coil	118.91
15BPEX-50C	15mm x 50m Coil	237.70
15BPEX-100C	15mm x 100m Coil	475.65
15BPEX-120C	15mm x 120m Coil	570.78
15BPEX-150C	15mm x 150mm Coil	713.48
22BPEX-25C	22mm x 25m Coil	226.90
22BPEX-50C	22mm x 50m Coil	413.36



White BPEX Pipe – Straight Lengths

Order Code	Size	List Price
15BPEX-20X3L	15mm x 3m length	14.26
22BPEX-20X2L	22mm x 2m length	18.23
22BPEX-10X3L	22mm x 3m length	27.35
28BPEX-10X3L	28mm x 3m length	40.02



Pipe Clips And Spacers

Order Code		List Price
PC15W	15mm Pipe Clip	0.70
PC22W	22mm Pipe Clip	0.81
PC28W	28mm Pipe Clip	1.31
PCSW	Pipe Spacer	0.49



Collet Locking Clips

Order Code	Colour	List Price
CM1815B	15mm Blue Locking Clip	0.32
CM1815S	15mm Grey Locking Clip	0.32
CM1822B	22mm Blue Locking Clip	0.34
CM1822R	22mm Red Locking Clip	0.34
CM1822W	22mm White Locking Clip	0.34

Collet Clips prevent accidental release of pipe from non-Twist and Lock fittings ie. Stop Ends and brass fittings. Red and blue clips can also be used to provide colour coding of pipe on both Twist and Lock and non-Twist and Lock fittings.



 1800 810 803

 sales@rmc.com.au

 rmc.com.au

AN RWC BRAND
 Reliance Worldwide Corporation (Aust.) Pty. Ltd.
27-28 Chapman Place, Eagle Farm QLD 4009,
Australia | ABN 71 004 784 301

The RWC logo, consisting of the letters 'RWC' in a bold, black, sans-serif font, positioned on a yellow and white geometric background element.